

Assembly Drawing and Bill of Materials

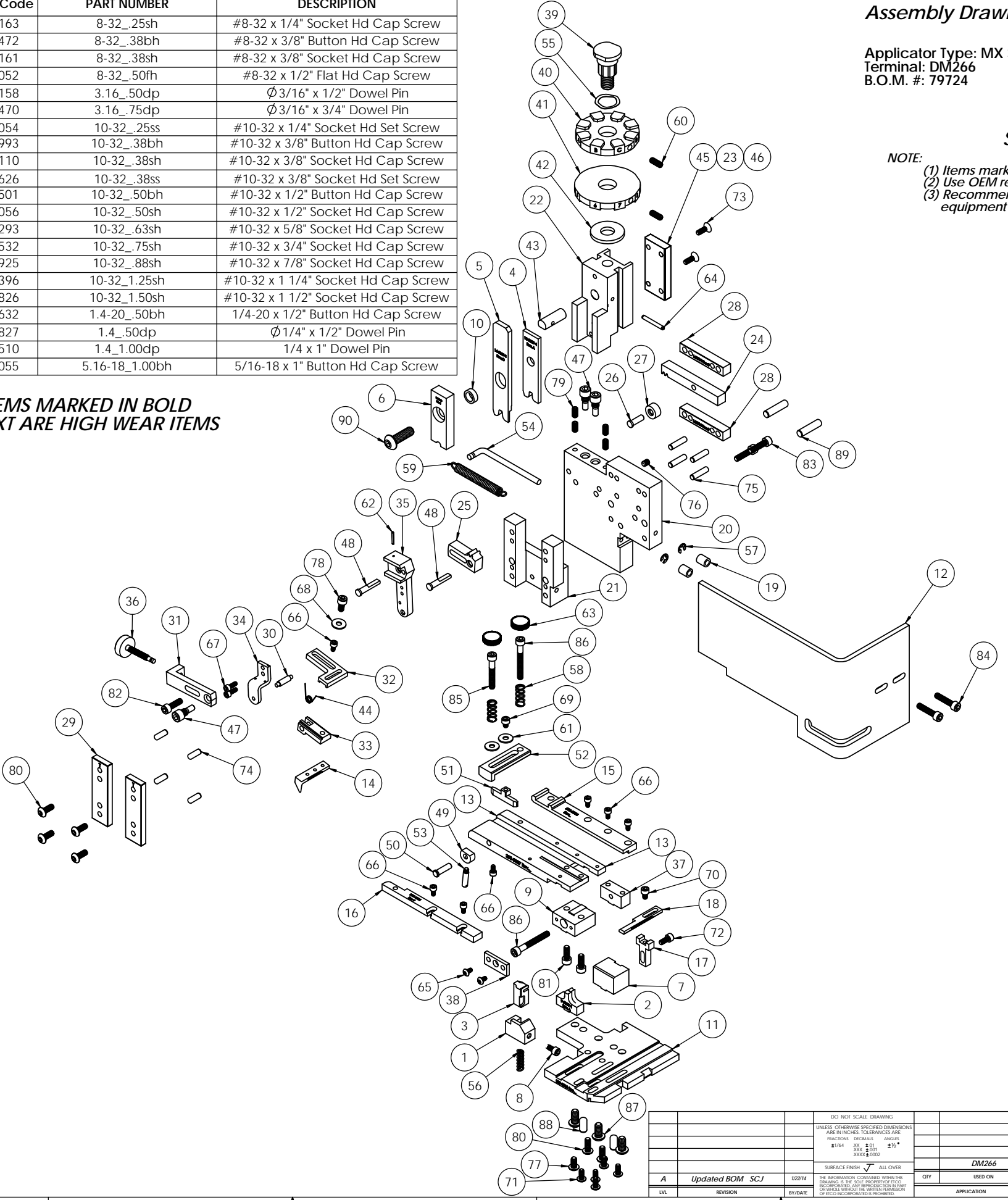
Applicator Type: MX Standard Side Feed Applicator  
Terminal: DM266  
B.O.M. #: 79724

Section 5

- NOTE:  
 (1) Items marked in bold text are high wear items.  
 (2) Use OEM replacement tooling only.  
 (3) Recommended machine speed for automatic equipment is a maximum of 3500 parts per hour.

ITEM NO.	QTY.	Part Code	PART NUMBER	DESCRIPTION	ITEM NO.	QTY.	Part Code	PART NUMBER	DESCRIPTION
<b>1</b>	<b>1</b>	<b>74440</b>	<b>8-3003</b>	<b>Front Cut-off Pad Retainer</b>	70	1	63163	8-32_.25sh	#8-32 x 1/4" Socket Hd Cap Screw
<b>2</b>	<b>1</b>	<b>75130</b>	<b>9-3007-1</b>	<b>Anvil</b>	71	5	61472	8-32_.38bh	#8-32 x 3/8" Button Hd Cap Screw
<b>3</b>	<b>1</b>	<b>74441</b>	<b>12-3003</b>	<b>Cut-off Pad</b>	72	1	63161	8-32_.38sh	#8-32 x 3/8" Socket Hd Cap Screw
<b>4</b>	<b>1</b>	<b>75128</b>	<b>13-3007-1</b>	<b>Wire Rolling Tool</b>	73	2	63052	8-32_.50fh	#8-32 x 1/2" Flat Hd Cap Screw
<b>5</b>	<b>1</b>	<b>75129</b>	<b>14-3007-1</b>	<b>Insulation Rolling Tool</b>	74	4	63158	3.16_.50dp	Ø3/16" x 1/2" Dowel Pin
<b>6</b>	<b>1</b>	<b>74446</b>	<b>15-3003</b>	<b>Cut-off Pad Driver</b>	75	4	63470	3.16_.75dp	Ø3/16" x 3/4" Dowel Pin
7	1	74802	26-3000	Backup Block	76	2	63054	10-32_.25ss	#10-32 x 1/4" Socket Hd Set Screw
8	1	77265	26-3088	Locking Screw	77	1	78993	10-32_.38bh	#10-32 x 3/8" Button Hd Cap Screw
9	1	75077	26-3007	Slide Support	78	1	70110	10-32_.38sh	#10-32 x 3/8" Socket Hd Cap Screw
10	1	75084	177S-3001	IRT Spacer	79	4	71626	10-32_.38ss	#10-32 x 3/8" Socket Hd Set Screw
11	1	75071	200-3006	Baseplate	80	6	76501	10-32_.50bh	#10-32 x 1/2" Button Hd Cap Screw
12	1	75075	199-3006	Guard	81	2	63056	10-32_.50sh	#10-32 x 1/2" Socket Hd Cap Screw
13	1	75076	250-3007	Feed Plate	82	1	70293	10-32_.63sh	#10-32 x 5/8" Socket Hd Cap Screw
14	1	74808	303-3005	Feed Finger	83	2	63532	10-32_.75sh	#10-32 x 3/4" Socket Hd Cap Screw
15	1	75072	500-3006	Rear Guide Rail	84	2	70925	10-32_.88sh	#10-32 x 7/8" Socket Hd Cap Screw
16	1	75073	1000-3006	Front Guide Rail	85	1	77396	10-32_1.25sh	#10-32 x 1 1/4" Socket Hd Cap Screw
17	1	74803	1600B-3000	Adjustable Stripper Holder	86	2	63826	10-32_1.50sh	#10-32 x 1 1/2" Socket Hd Cap Screw
18	1	77921	1600A-2000-3000	Adjustable Stripper Block	87	3	63632	1.4-20_.50bh	1/4-20 x 1/2" Button Hd Cap Screw
19	2	74491	GS-375	Guard Spacer	88	2	63827	1.4_.50dp	Ø1/4" x 1/2" Dowel Pin
20	1	71029	MX2A-S	Mounting Frame	89	2	63510	1.4_1.00dp	1/4 x 1" Dowel Pin
21	1	71030	MX2B-S	Plunger Frame	90	1	63055	5.16-18_1.00bh	5/16-18 x 1" Button Hd Cap Screw
22	1	74343	MX3	Ram					
23	1	74344	MX4-S	Cam (1 5/8" Up Stroke)					
24	1	74438	MX5-S	Cam Rack					
25	1	74346	MX6	Gear Arm					
26	1	74347	MX7	Cam Pin					
27	1	74350	MX8	Cam Roller					
28	2	74351	MX10-S	Rack Pad					
29	2	74352	MX11	Gib					
30	1	74356	MX12	Feed Finger Pivot Pin					
31	1	74360	MX13	Adjusting Bar					
32	1	74361	MX14-S	Feed Finger Arm					
33	1	74362	MX15-S	Feed Finger Guide					
34	1	74364	MX16	Retainer					
35	1	74371	MX18-S	Swing Arm					
36	1	74376	MX25	Stroke Adjustment Screw					
37	1	74388	MX30-S	Support Anchor					
38	1	74390	MX32-S	Support Cover					
39	1	74407	MX33	Mounting Post					
40	1	74408	MX34	Wire Crimp Dial Blank					
41	1	74409	MX35	Insulation Dial					
42	1	74411	MX36	Dial Spacer					
43	1	74412	MX44	Locating Dowel					
44	1	74415	MX45-S	Feed Finger Spring					
45	1	74416	MX47-S	Cam (1 5/8" Down stroke)					
46	1	74417	MX48-S	Cam (1 1/8" Up Stroke)					
47	3	74419	MX50	Safety Pivot Pin					
48	2	74420	MX52	Pivot Pin					
49	1	74425	MX84-S	Brake Cam					
50	1	74426	MX85-S	Cam Pivot Pin					
51	1	74428	MX86-S	Brake Shoe					
52	1	75178	MX87-S	Lift Arm					
53	1	74430	MX88-S	Lever					
54	1	74614	MX90-S	Spring Bracket					
55	1	72310	MX104	Wave Disc Spring					
56	1	74578	4-034-875	Spring					
57	2	75083	Irving 3100-18	External Retaining Ring					
58	2	77322	LC-045E-10-M	Spring					
59	1	74611	LE-037CD-6	Extension Spring					
60	2	70739	McMaster-Carr #3126A53	Spring Plunger					
61	2	72519	McMaster Carr #98029A043	#8 Hardened Washer					
62	1	74447	McMaster-Carr #98296A109	Expansion Pin (1/16 x 1/2")					
63	2	73785	SPI 99-602-5	#10 Black Knurled Knob					
64	1	62040	1.8_1.00rp	1/8" x 1" Roll Pin					
65	2	63792	6-32_.25bh	#6-32 x 1/4" Button Hd Cap Screw					
66	7	63207	6-32_.25sh	#6-32 x 1/4" Socket Hd Cap Screw					
67	2	63209	6-32_.38sh	#6-32 x 3/8" Socket Hd Cap Screw					
68	1	63210	8fw	#8 Flatwasher					
69	1	60265	8-32_.19sh	#8-32 x 3/16" Socket Hd Cap Screw					

NOTE: ITEMS MARKED IN BOLD TEXT ARE HIGH WEAR ITEMS



ITEM NO.		PART NO.		DESCRIPTION		MATERIAL SPECIFICATION		QTY.	
See Parts List									
<b>DM266</b>									
USED ON									
DATE: 1/22/14									