



**REFERENCE LIST:
 RED-109
 ECC APPLICATOR
 BILL OF MATERIAL NUMBER
 79725**

**WARNING !
 NEVER OPERATE
 THIS OR ANY
 APPLICATOR
 WITHOUT SAFETY
 GUARD IN POSITION.**

PART CODE	PART NUMBER	QUANTITY	DESCRIPTION
75495	1100-FS	(1)	PLUNGER
77918	1102-FS	(1)	FLOATING SHANK
75728	1155	(1)	ADJUST SCREW
75724	1150	(1)	INSULATION BLOCK
75710	1125	(1)	CAM ROLLER BRACKET
75719	1142	(1)	CAM ROLLER BEARING
71815	*12-RED109	(1)	CUT-OFF PUNCH
77365	12S-T6720	(1)	SPACER
72638	*13-RED109	(1)	WIRE ROLLING TOOL
73253	6-046-50	(2)	SPRING
74410	314L-2	(1)	CAM
74403	311	(1)	SPRING PIN
74404	312	(1)	CAM TAPER PIN
74402	310	(1)	CAM RETURN SPRING
73899	101	(1)	TOP CASTING
76969	169	(2)	UNIVERSAL GIBS
74675	406	(1)	COTTER PIN
74676	407	(1)	BRAKE SPRING
74089	408-.500	(1)	BRAKE BUSHING
74674	405	(1)	TAPER PIN
74673	404	(1)	BRAKE CAM
75138	403-17	(1)	BRAKE BODY
74496	402	(1)	SPRING RETAINER
74495	401	(1)	BRAKE SHAFT
74396	306	(1)	FEED FINGER STOP
74393	305	(1)	FEED FINGER ARM
74400	308	(1)	FEED SHAFT
78152	304-250	(1)	REAR SPACER
76787	307-4	(1)	SPRING
77792	7A-T6720	(1)	FEED FINGER
76919	301-2	(1)	SHOULDER SCREW
73952	231	(2)	STRIPPER SPRING
76031	1653	(1)	STRIPPER / STOP
73955	235	(1)	GUIDE SPACER BLOCK
75139	500-59	(1)	REAR / RIGHT GUIDE
75392	1000	(1)	FRONT / LEFT GUIDE

**NOTE: ITEMS MARKED WITH AN *
 ARE HIGH WEAR ITEMS**



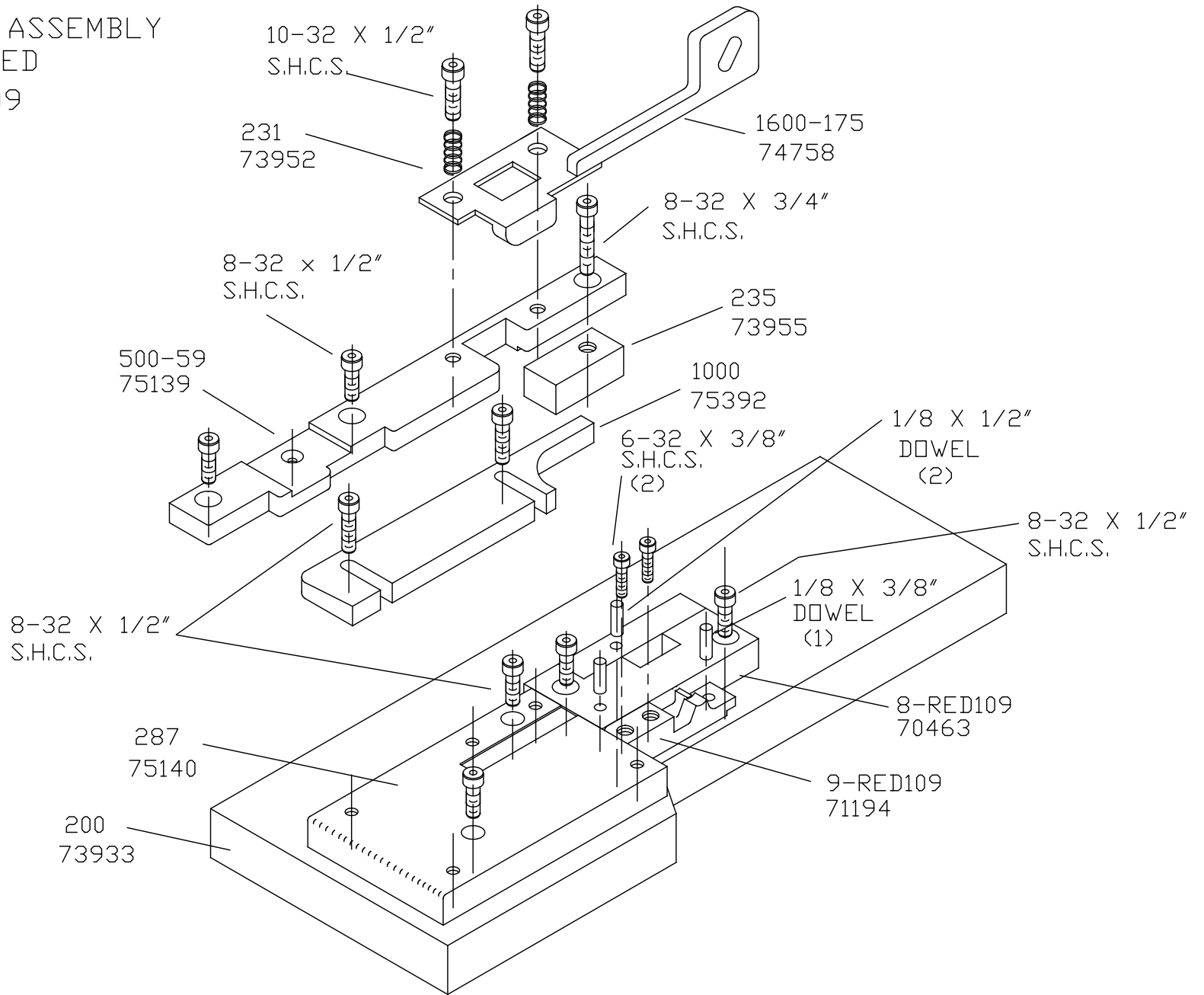
REFERENCE LIST:
RED-109
ECC APPLICATOR
 BILL OF MATERIAL NUMBER
79725

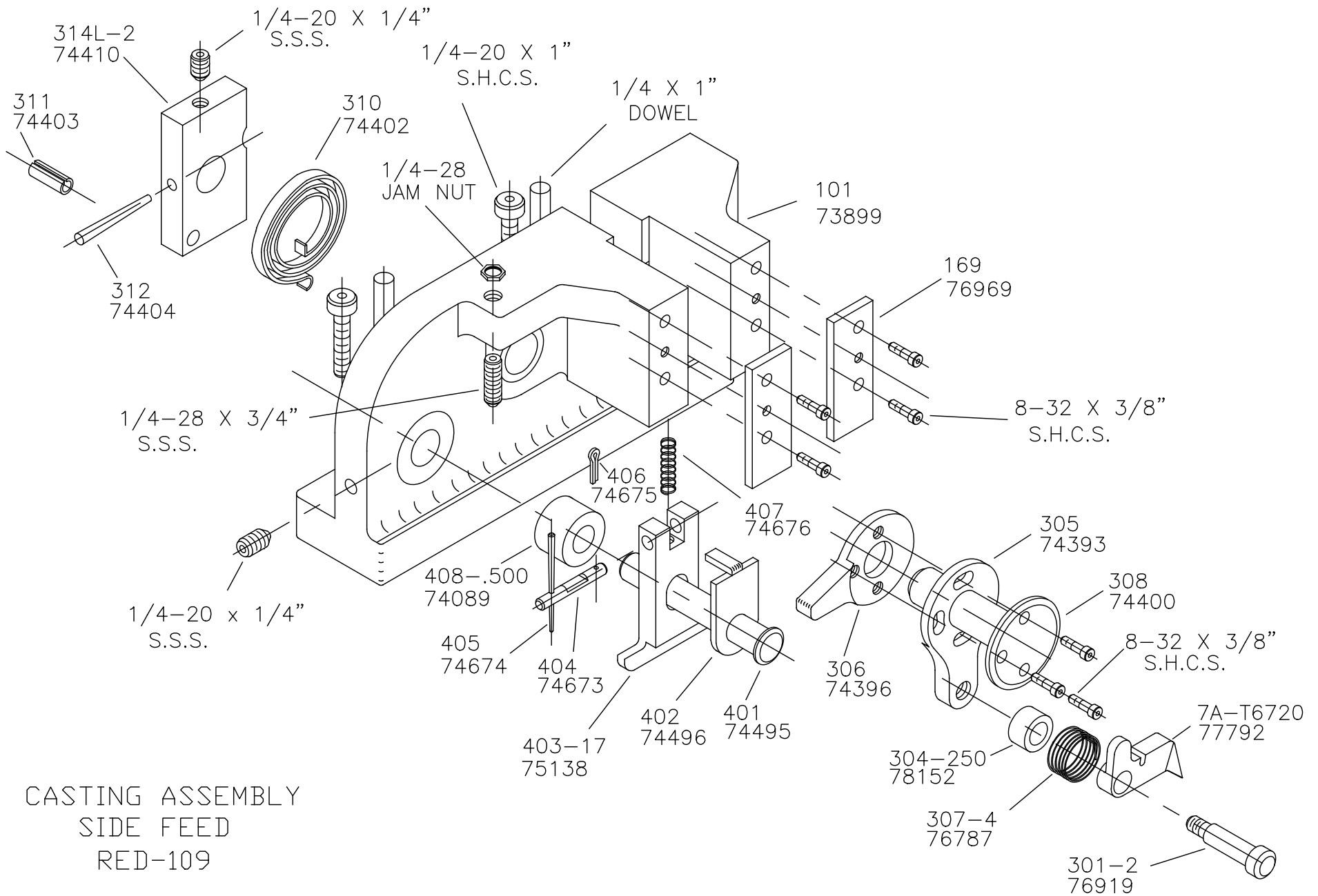
WARNING !
NEVER OPERATE
THIS OR ANY
APPLICATOR
WITHOUT SAFETY
GUARD IN POSITION.

PART CODE	PART NUMBER	QUANTITY	DESCRIPTION
75140	287	(1)	DIE PLATE
73933	200	(1)	BASE PLATE
70463	*8B-RED109	(1)	DIE
71194	*9-RED109	(1)	ANVIL
76186	1800	(1)	STOCK CHUTE
73922	176	(1)	GUARD
		(1)	10-32 X 3/8" S.H.C.S.
		(1)	1/4-28 X 1/2" S.H.C.S.
		(2)	1/8 X 1" DOWEL
		(1)	5/16 X 3/4" SHOULDER SCREW
		(2)	1/4 X 3/8" S.H.C.S.
		(2)	1/4 X 3/8" SHOULDER SCREW
		(2)	1/4-20 X 1" S.H.C.S.
		(2)	1/4 X 1" DOWEL
		(1)	1/4-28 JAM NUT
		(2)	1/4-20 X 1/4" S.S.S.
		(12)	8-32 X 3/8" S.H.C.S.
		(2)	10-32 X 1/2" S.H.C.S.
		(1)	8-32 X 3/4" S.H.C.S.
		(2)	6-32 X 3/8" S.H.C.S.
		(6)	8-32 X 1/2" S.H.C.S.
		(2)	1/8 X 1/2" DOWEL
		(1)	1/8 X 3/8" DOWEL
		(1)	1/4-28 X 1 1/4" S.H.C.S.

**NOTE: ITEMS MARKED WITH AN *
 ARE HIGH WEAR ITEMS**

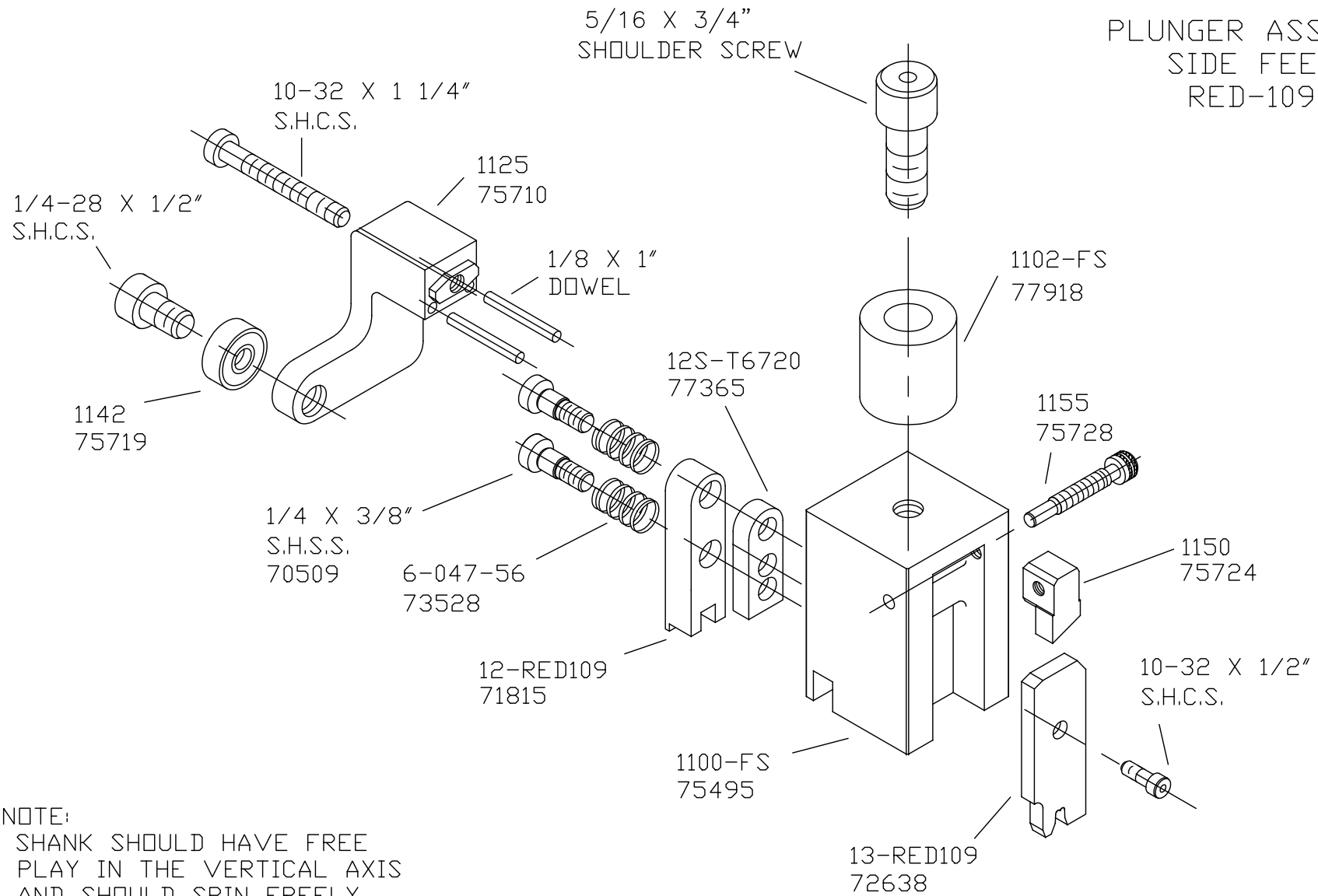
BASE PLATE ASSEMBLY
SIDE FEED
RED-109





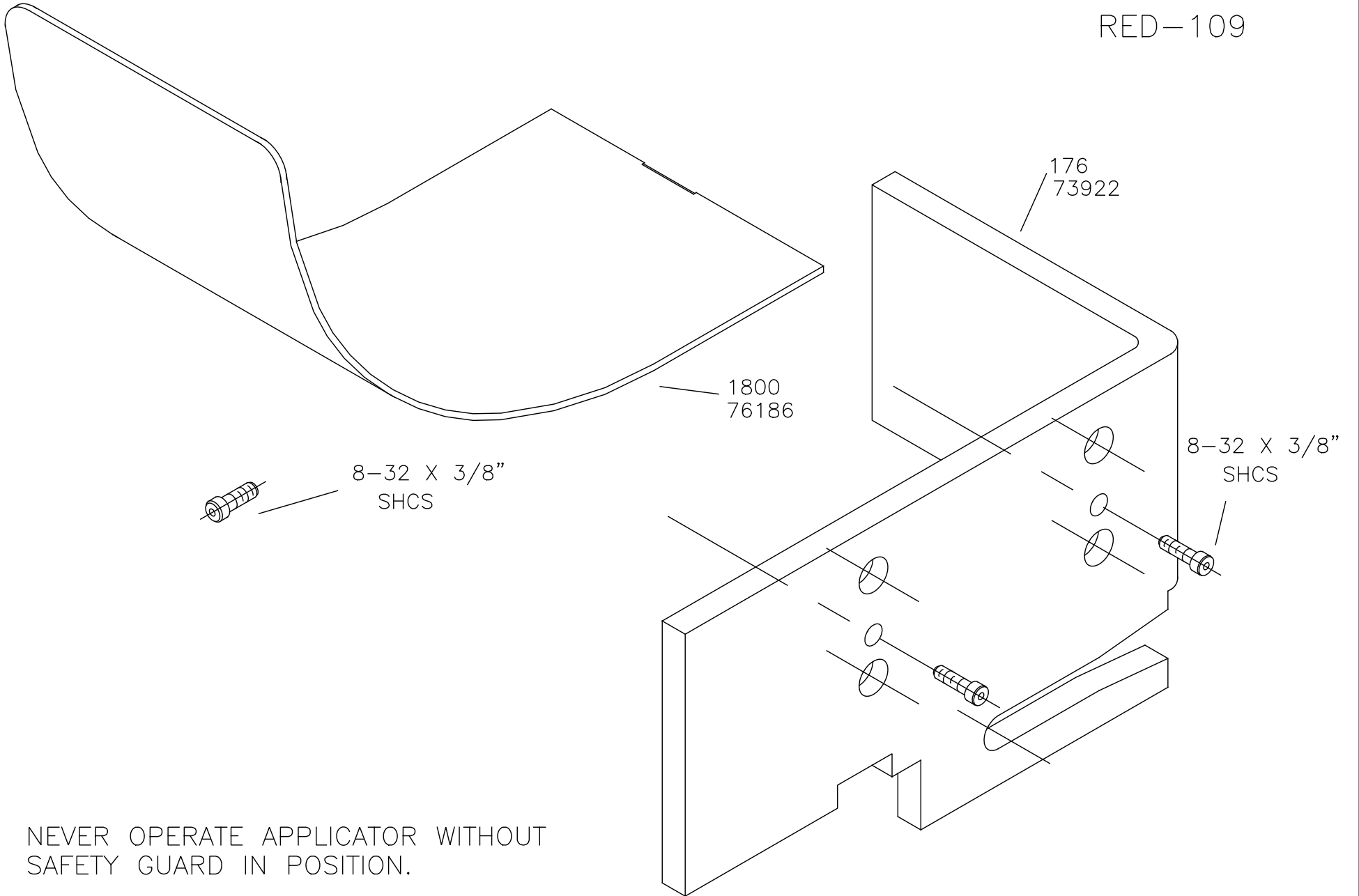
CASTING ASSEMBLY
 SIDE FEED
 RED-109

PLUNGER ASSEMBLY
SIDE FEED
RED-109



NOTE:
SHANK SHOULD HAVE FREE
PLAY IN THE VERTICAL AXIS
AND SHOULD SPIN FREELY.
THIS FREE MOTION SERVES
AS A MISALIGNMENT COUPLING
BETWEEN PRESS RAM
AND PLUNGER.

CHUTE AND GUARD
RED-109



NEVER OPERATE APPLICATOR WITHOUT
SAFETY GUARD IN POSITION.