



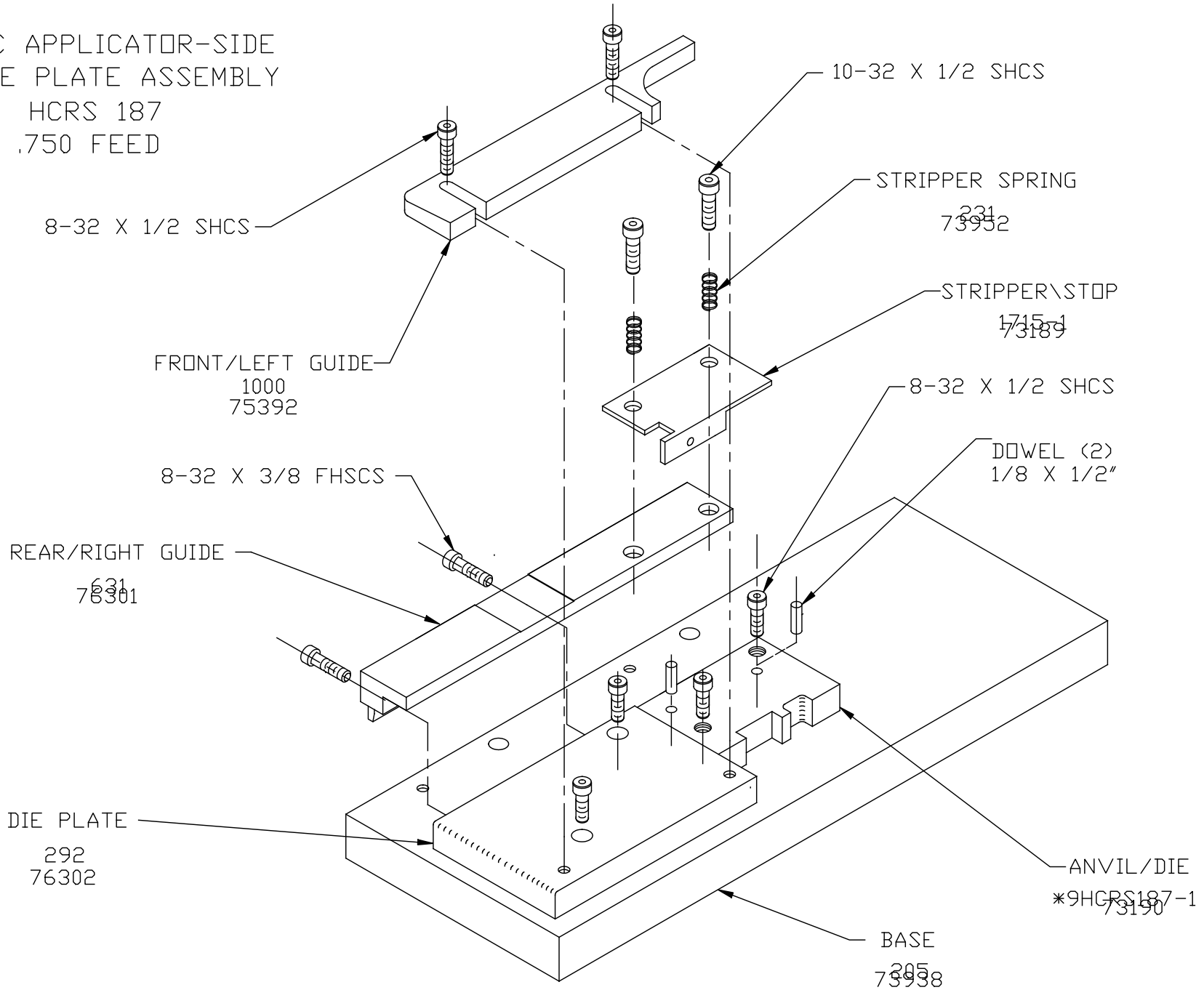
**REFERENCE LIST:
HCRS 187
.750 FEED
ECC APPLICATOR-SIDE
BILL OF MATERIAL NUMBER
79727**

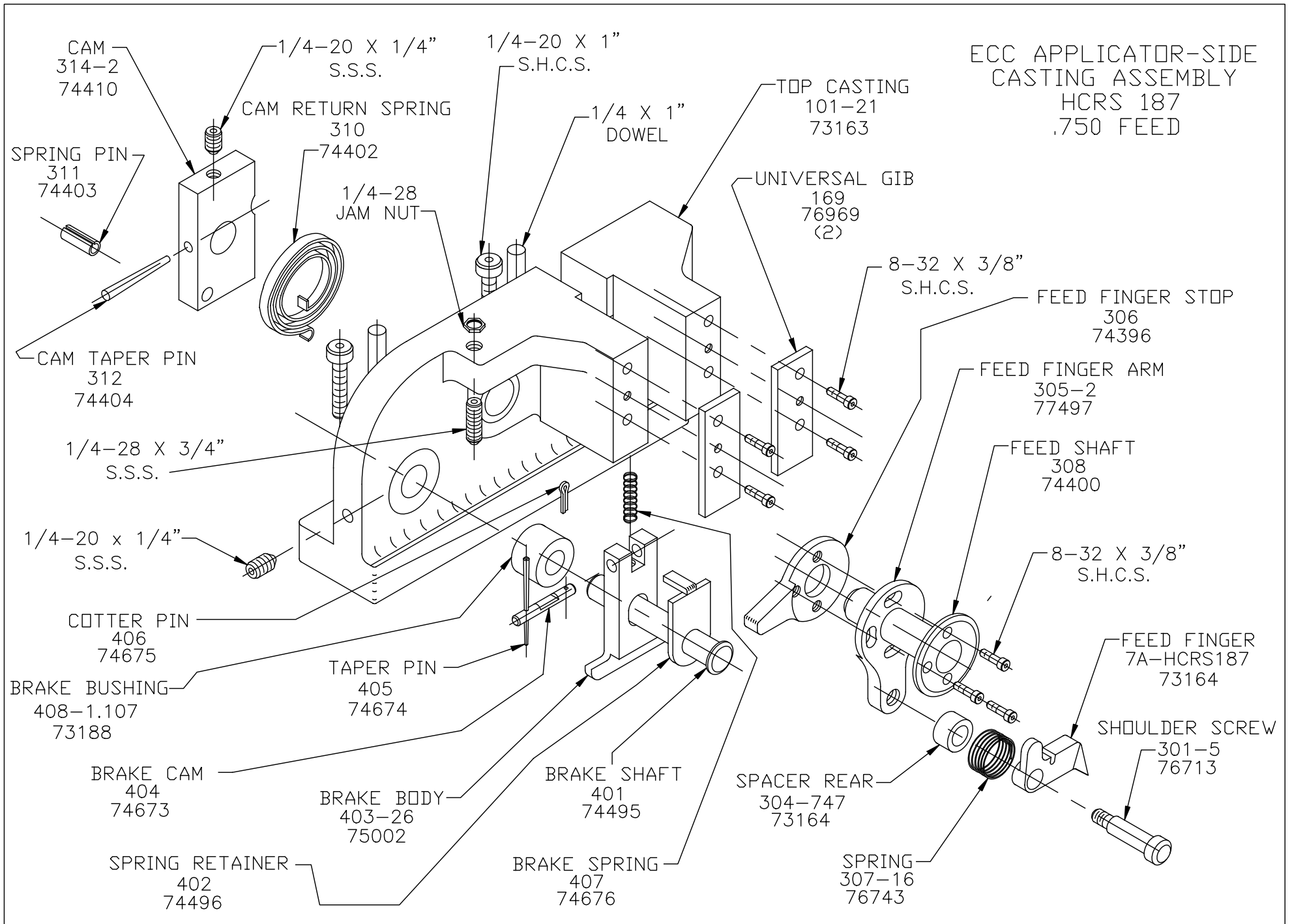
**WARNING !
NEVER OPERATE
THIS OR ANY
APPLICATOR
WITHOUT SAFETY
GUARD IN POSITION.**

PART CODE	PART NUMBER	QUANTITY	DESCRIPTION
73163	101-21	(1)	TOP CASTING
73922	176	(1)	GUARD
76969	169	(2)	UNIVERSAL GIB
76186	1800	(1)	STOCK CHUTE
73938	205	(1)	BASE
76302	292	(1)	DIE PLATE
76713	301-5	(1)	SHOULDER SCREW
73164	7A-HCRS187	(1)	FEED FINGER
73162	304-747	(1)	SPACER REAR
77497	305-2	(1)	FEED FINGER ARM
74396	306	(1)	FEED FINGER STOP
74400	308	(1)	FEED SHAFT
76743	307-16	(1)	SPRING
74410	314-2	(1)	CAM
73188	408-1.107	(1)	BRAKE BUSHING
76301	631	(1)	REAR / RIGHT GUIDE
73190	*9HCRS187-1	(1)	ANVIL & DIE
75392	1000	(1)	FRONT / LEFT GUIDE
73161	1102-6	(1)	PLUNGER
75710	1125	(1)	CAM ROLLER BRACKET
75719	1142	(1)	CAM ARM BEARING
71879	*12HCRS187A1	(1)	CUT-OFF PUNCH
73165	12S-HCRS187D	(1)	CUT-OFF SPACER
72708	*13HCRS187	(1)	WIRE ROLLING TOOL
73189	1715-1	(1)	STRIPPER / STOP
73952	213	(2)	STRIPER / SPRING
74404	312	(1)	CAM TAPER PIN
74403	311	(1)	SPRING PIN
74402	310	(1)	CAM RETURN SPRING
74674	405	(1)	TAPER PIN
74673	404	(1)	BRAKE CAM
75002	403-26	(1)	BRAKE BODY
74496	402	(1)	SPRING RETAINER
74495	401	(1)	BRAKE SHAFT
74676	407	(1)	BRAKE SPRING
74675	406	(1)	COTTER PIN

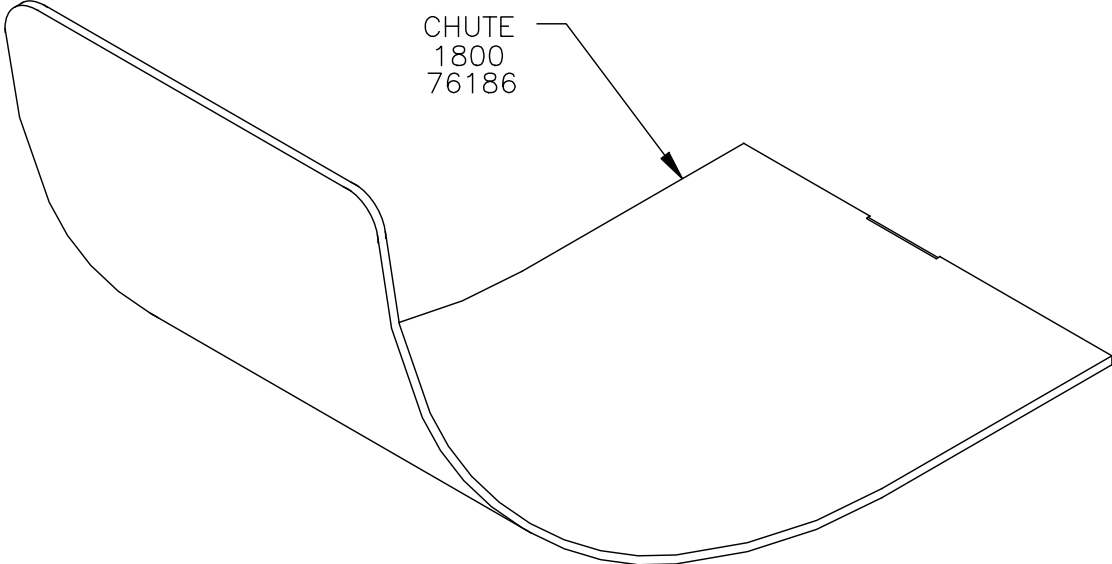
**NOTE: ITEMS MARKED WITH AN *
ARE HIGH WEAR ITEMS**

ECC APPLICATOR-SIDE
BASE PLATE ASSEMBLY
HCRS 187
.750 FEED




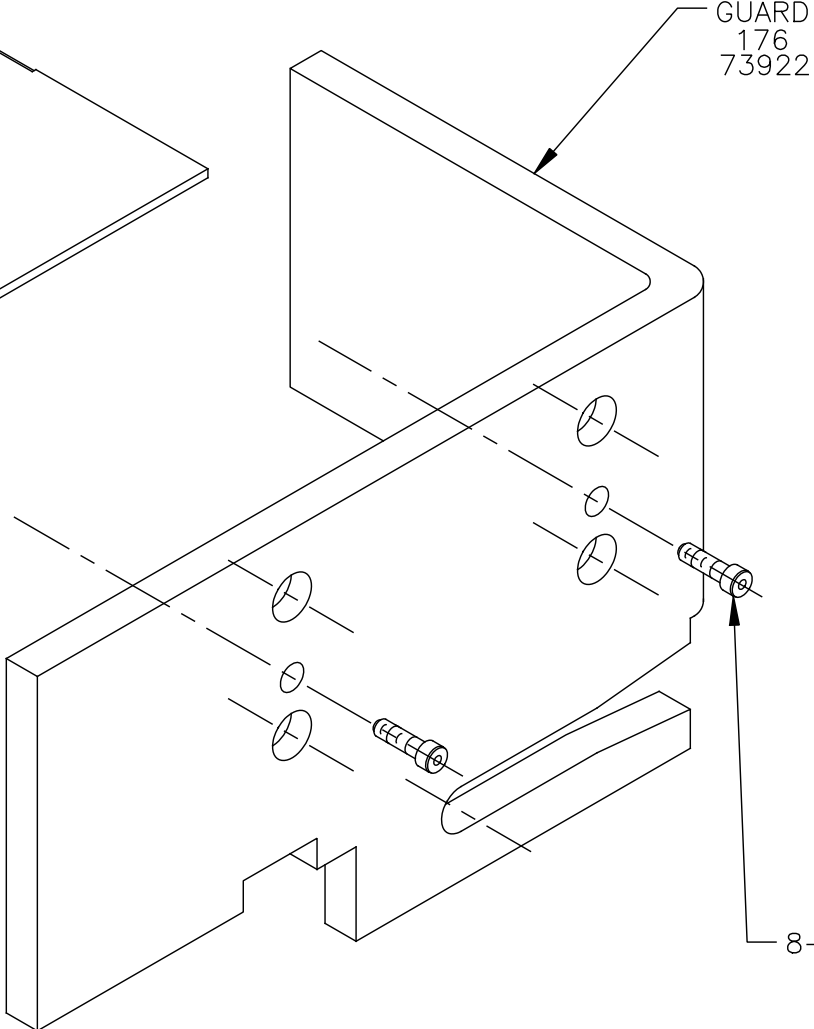


ECC APPLICATOR—SIDE
CHUTE & GUARD ASSEMBLY
HCRS 187
.750 FEED



CHUTE
1800
76186

GUARD
176
73922

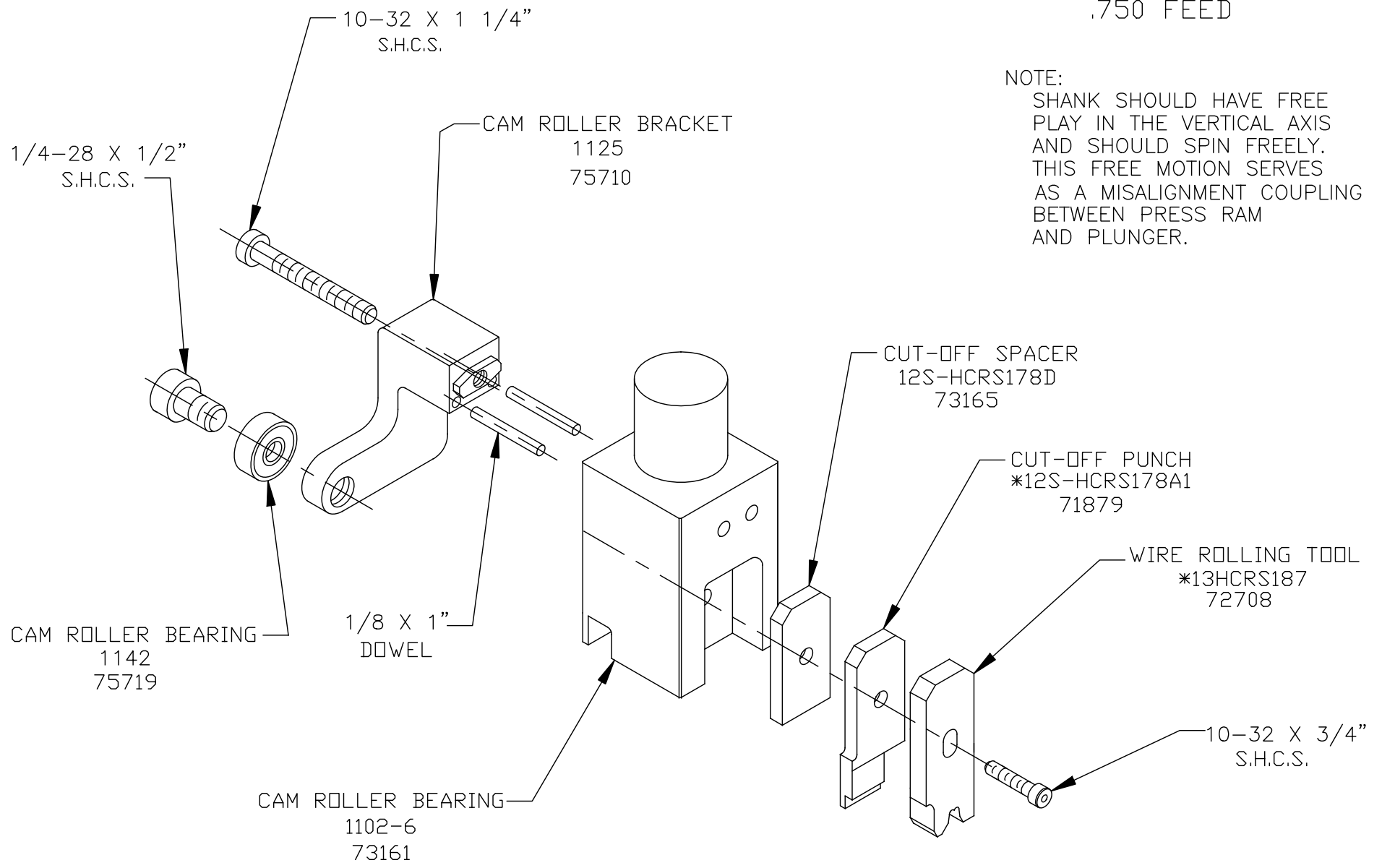


8-32 X 3/8"
SHCS

8-32 X 3/8"
SHCS

NEVER OPERATE APPLICATOR WITHOUT
SAFETY GUARD IN POSITION.

ECC APPLICATOR-SIDE
 PLUNGER ASSEMBLY
 HCRS 187
 .750 FEED



NOTE:
 SHANK SHOULD HAVE FREE
 PLAY IN THE VERTICAL AXIS
 AND SHOULD SPIN FREELY.
 THIS FREE MOTION SERVES
 AS A MISALIGNMENT COUPLING
 BETWEEN PRESS RAM
 AND PLUNGER.