



REFERENCE LIST:
D163E, D165E
ECC APPLICATOR
BILL OF MATERIAL NUMBER
79770

WARNING !
NEVER OPERATE
THIS OR ANY APPLICATOR
WITHOUT SAFETY GUARD
IN POSITION.

PART CODE	PART NUMBER	QUANTITY	DESCRIPTION
75580	11060-FS	(1)	PLUNGER
77918	1102-FS	(1)	FLOATING SHANK
75728	1155	(1)	ADJUST BLOCK SCREW
75725	1150-1	(1)	INSULATION BLOCK
71855	*12-D154E	(1)	CUT-OFF PUNCH
76877	*13-511	(1)	WIRE ROLLING TOOL
77508	17-040	(1)	SPACER
76878	*14-500	(1)	INSULATION ROLLING TOOL
75713	11B1	(1)	CAM ROLLER BRACKET
75719	1142	(1)	CAM ROLLER BEARING
74422	314L-9A	(1)	CAM BODY
77106	312-1	(1)	CAM TAPER PIN
74402	310	(1)	CLOCK SPRING
73706	311-1	(1)	ROLL PIN
76969	169	(2)	UNIVERSAL GIB
74150	250-192	(1)	DIE PLATE
72900	202-21	(1)	BASE PLATE
78874	1600-342	(1)	WIRE STOP/STRIPPER
75029	101-111	(1)	TOP CASTING
73216	408-720	(1)	BRAKE SPACER
74676	407	(1)	SPRING
74675	406	(1)	COTTER PIN
74674	405	(1)	TAPER PIN
74673	404	(1)	BRAKE CAM
70027	403-180	(1)	BRAKE BODY
74496	402	(1)	BRAKE SPRING RETAINER
74495	401	(1)	BRAKE SHAFT
77049	306-1	(1)	FEED FINGER STOP
74393	305	(1)	FEED FINGER ARM
77736	304-365	(1)	REAR SPACER
74400	308	(1)	FEED SHAFT
76859	307-6	(1)	SPRING
70091	7A-D154E	(1)	FEED FINGER
77735	302-135	(1)	FRONT SPACER
76873	301-4	(1)	SHOULDER SCREW
70105	500-166-1	(1)	RIGHT GUIDE
78144	1000-52-1	(1)	LEFT GUIDE

NOTE: ITEMS MARKED WITH AN *
ARE HIGH WEAR ITEMS



**REFERENCE LIST:
D163E, D165E
ECC APPLICATOR
BILL OF MATERIAL NUMBER
79770**

WARNING !
NEVER OPERATE
THIS OR ANY APPLICATOR
WITHOUT SAFETY GUARD
IN POSITION.

PART CODE	PART NUMBER	QUANTITY	DESCRIPTION
70183	*8-061	(1)	DIE
70187	*8-068	(1)	DIE
70950	*9-062	(1)	INSULATION ANVIL
70952	*9-064	(1)	WIRE ANVIL
77512	GS-060	(2)	GUARD SPACER
73967	179-23	(1)	GUARD
75083	McMaster-Carr 98407A118	(2)	E-STYLE RETAINING RINGS
		(1)	10-32 X 1" S.H.C.S.
		(1)	10-32 X 1 1/2" S.H.C.S.
		(1)	1/4-28 X 1/2" S.H.C.S.
		(2)	1/8 X 1" DOWEL
		(1)	5/16 X 3/4" SHOULDER SCREW
		(1)	1/4-28 X 3/4" S.S.S.
		(2)	1/4-20 X 1" S.H.C.S.
		(2)	1/4 X 1" DOWEL
		(1)	1/4-28 JAM NUT
		(2)	1/4-20 X 1/4" S.S.S.
		(9)	8-32 X 3/8" S.H.C.S.
		(8)	8-32 X 1/2" S.H.C.S.
		(2)	8-32 X 1" S.H.C.S.
		(1)	8-32 X 3/8" S.S.S.

**NOTE: ITEMS MARKED WITH AN *
ARE HIGH WEAR ITEMS**

*ECC APPLICATOR
REAR FEED
D163E/D165E*

8-32 X 3/8 S.H.C.S. (2)

8-32 X 1/2 S.H.C.S. (2)

*LEFT GUIDE
1000-52-1
78144*

*WIRE STOP/STRIPPER
1600-342
78874*

*RIGHT GUIDE
500-166-1
70105*

*FEED PLATE
250-192
74150*

8-32 X 1/2 S.H.C.S. (4)

*DIE
*8-068
70187*

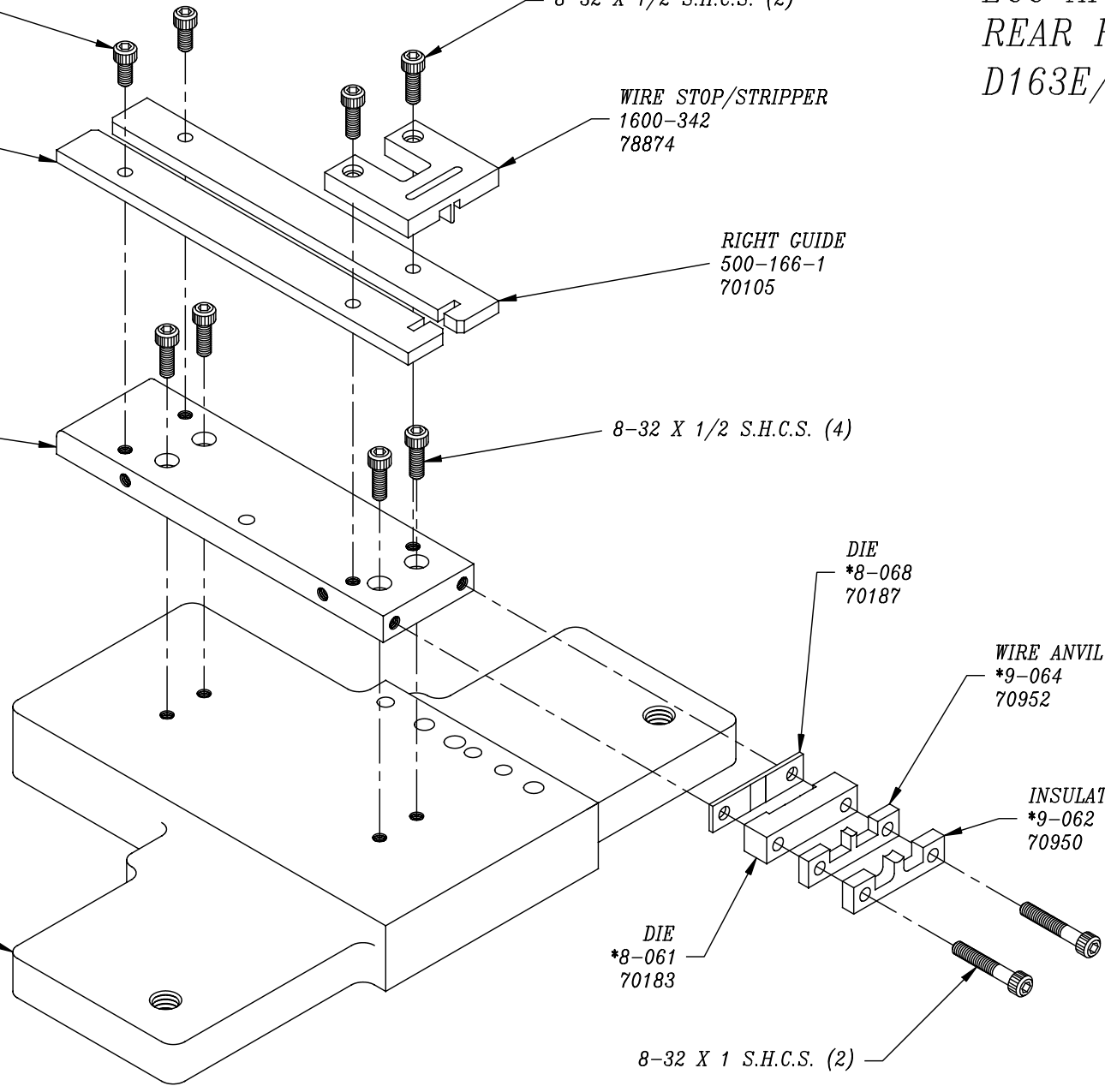
*WIRE ANVIL
*9-064
70952*

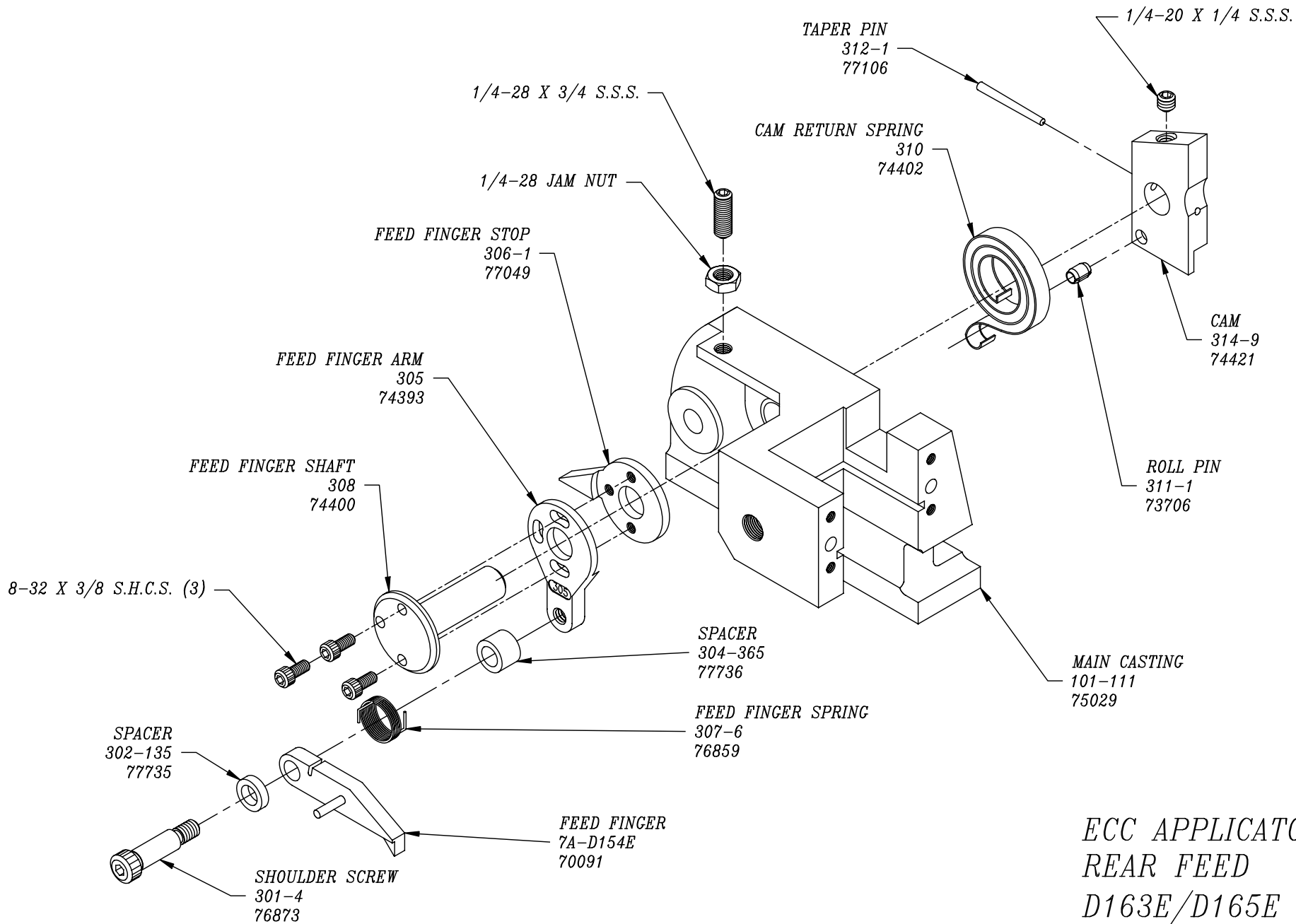
*INSULATION ANVIL
*9-062
70950*

*BASE PLATE
202-21
72900*

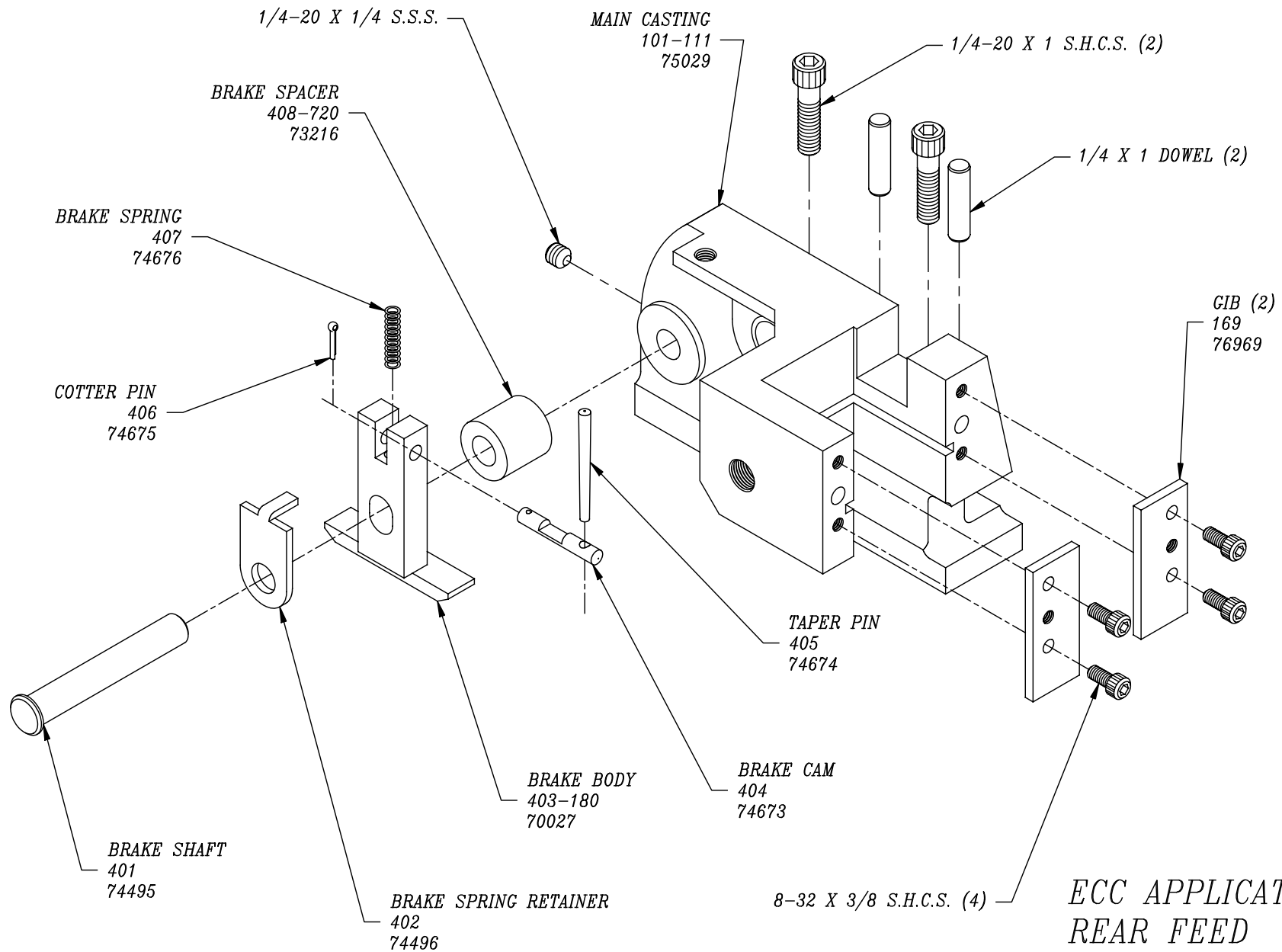
*DIE
*8-061
70183*

8-32 X 1 S.H.C.S. (2)

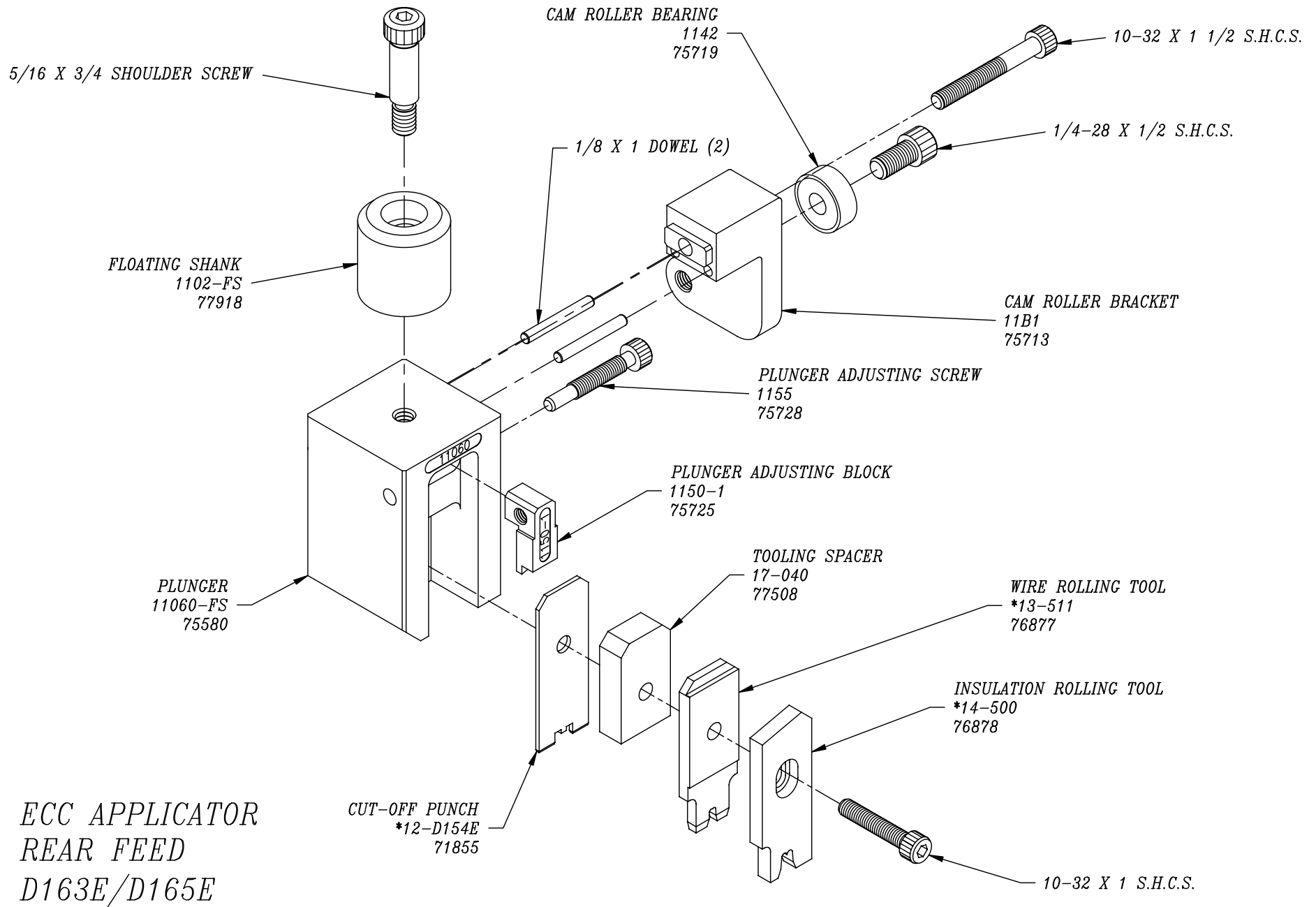




ECC APPLICATOR
 REAR FEED
 D163E/D165E



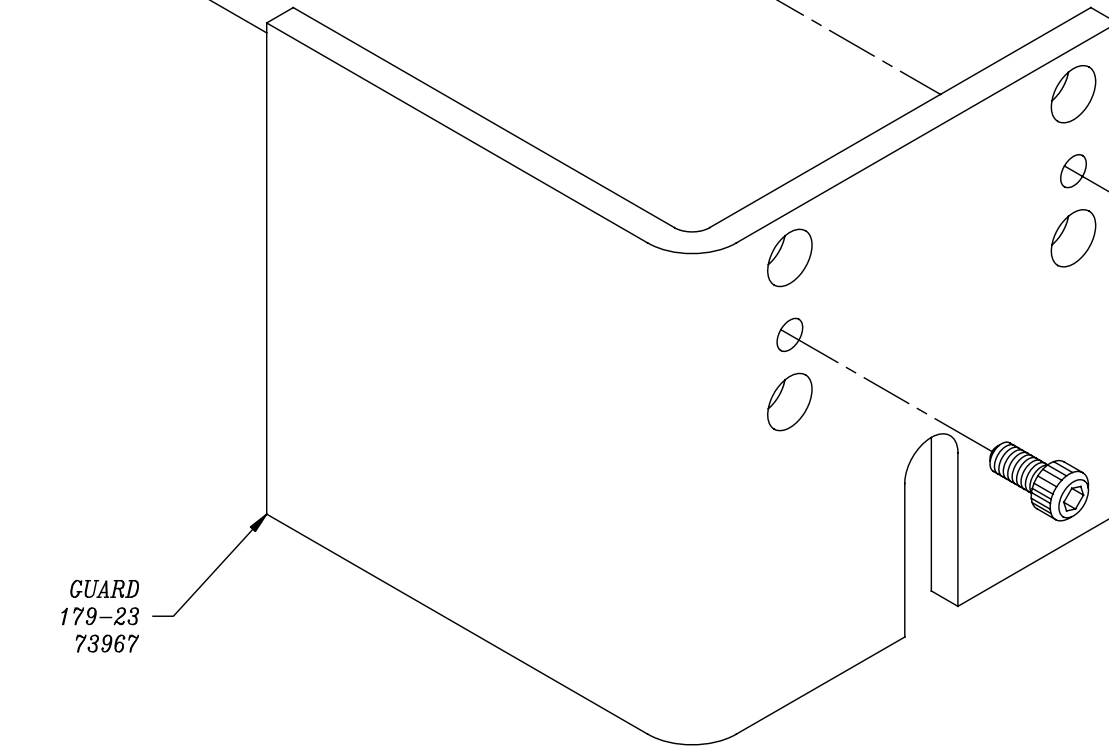
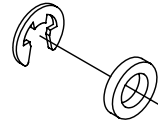
*ECC APPLICATOR
REAR FEED
D163E/D165E*



*ECC APPLICATOR
REAR FEED
D163E/D165E*

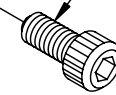
E-STYLE RETAINING RING (2)
98407A118
75083

GUARD SPACER (2)
GS-060
77512



GUARD
179-23
73967

8-32 X 3/8 S.H.C.S. (2)



*ECC APPLICATOR
REAR FEED
D163E/D165E*