



**REFERENCE LIST:  
R176,R172  
ECC APPLICATOR  
BILL OF MATERIAL NUMBER  
79788**

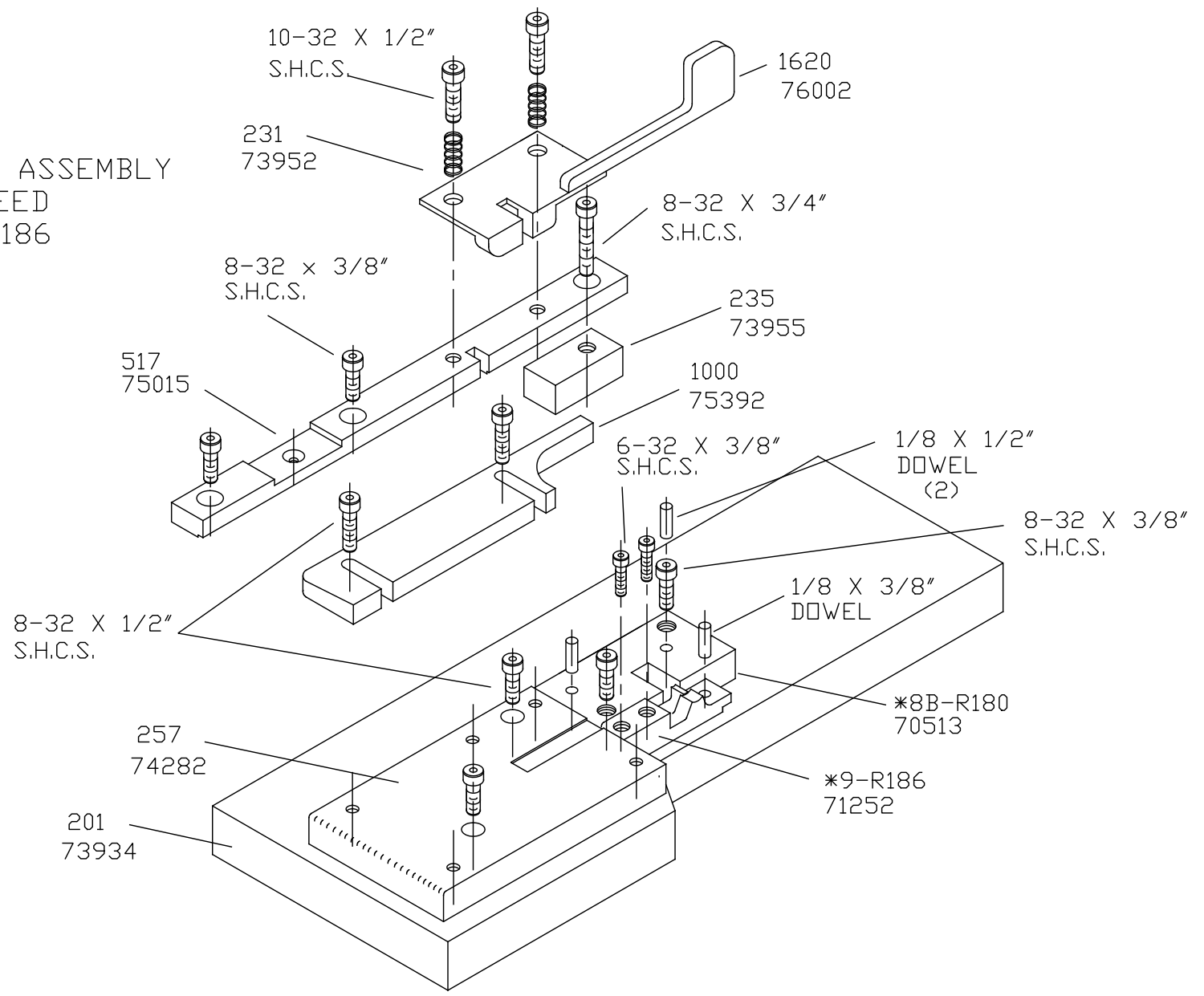
**WARNING !  
NEVER OPERATE  
THIS OR ANY  
APPLICATOR  
WITHOUT SAFETY  
GUARD IN POSITION.**

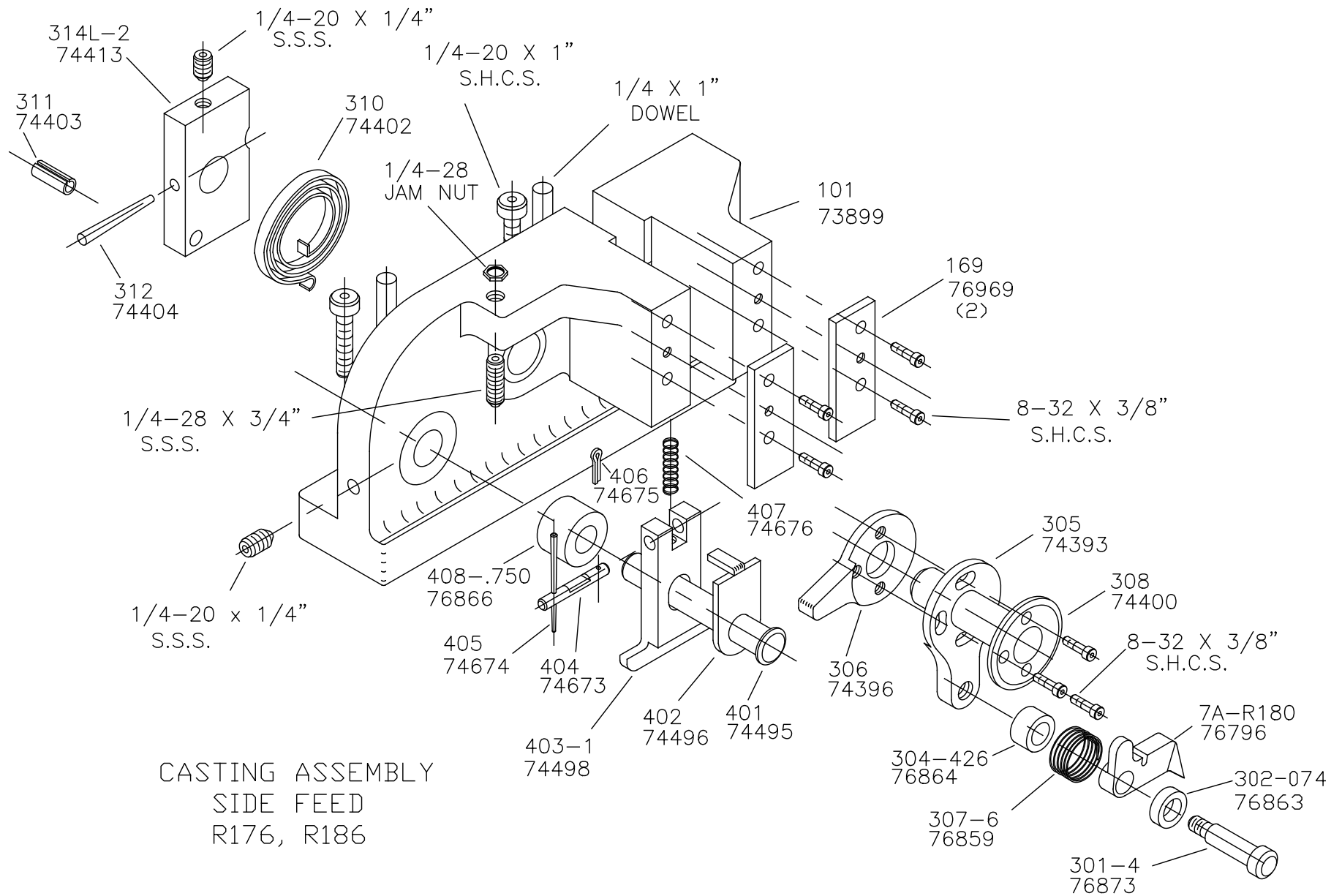
PART CODE	PART NUMBER	QUANTITY	DESCRIPTION
75496	1101-FS	(1)	PLUNGER
77918	1102-FS	(1)	FLOATING SHANK
75729	1156	(1)	CUT-OFF SCREW
75728	1155	(1)	ADJUST SCREW
75724	1150	(1)	INSULATION BLOCK
75710	1125	(1)	CAM ROLLER BRACKET
75719	1142	(1)	CAM ROLLER BEARING
71868	*12-R180	(1)	CUT-OFF PUNCH
72662	*13-S126	(1)	WIRE ROLLING TOOL
		N/A	INSULATION ROLLING TOOL
74413	314L-2	(1)	CAM
74403	311	(1)	SPRING PIN
74404	312	(1)	CAM TAPER PIN
74402	310	(1)	CAM RETURN SPRING
73899	101	(1)	TOP CASTING
76969	169	(2)	UNIVERSAL GIBS
74675	406	(1)	COTTER PIN
74676	407	(1)	BRAKE SPRING
76866	408-.750	(1)	BRAKE BUSHING
74674	405	(1)	TAPER PIN
74673	404	(1)	BRAKE CAM
74498	403-1	(1)	BRAKE BODY
74496	402	(1)	SPRING RETAINER
74495	401	(1)	BRAKE SHAFT
74396	306	(1)	FEED FINGER STOP
74393	305	(1)	FEED FINGER ARM
74400	308	(1)	FEED SHAFT
76864	304-426	(1)	REAR SPACER
76859	307-6	(1)	SPRING
76796	7A-R180	(1)	FEED FINGER
76863	302-074	(1)	FRONT SPACER
76873	301-4	(1)	SHOULDER SCREW
73952	231	(2)	STRIPPER SPRING
76002	1620	(1)	WIRE STRIPPER / STOP
73955	235	(1)	GUIDE SPACER BLOCK
75015	517	(1)	REAR / RIGHT GUIDE
75392	1000	(1)	FRONT / LEFT GUIDE
74282	257	(1)	DIE PLATE

**NOTE: ITEMS MARKED WITH AN \*  
ARE HIGH WEAR ITEMS**

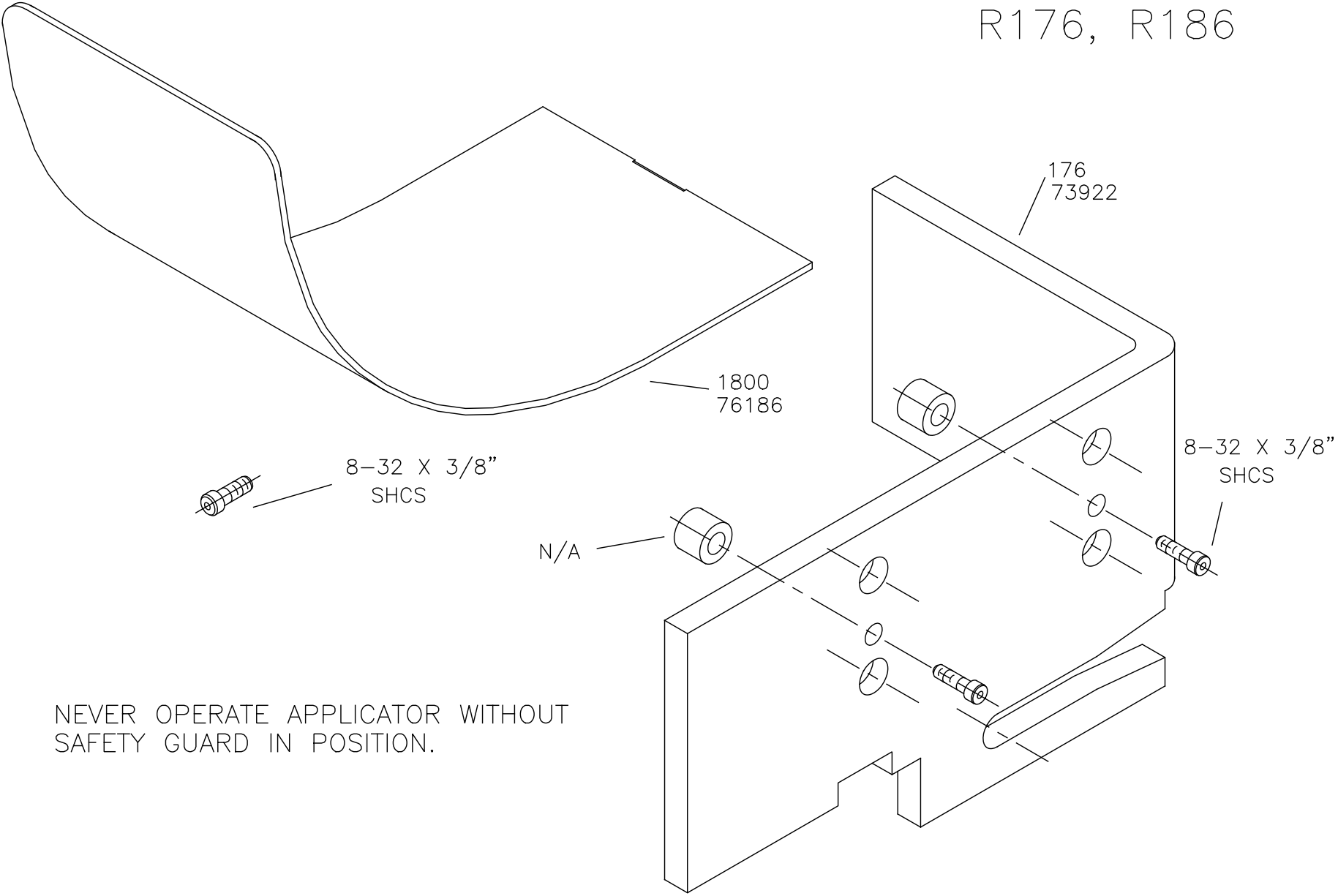


BASE PLATE ASSEMBLY  
SIDE FEED  
R176, R186

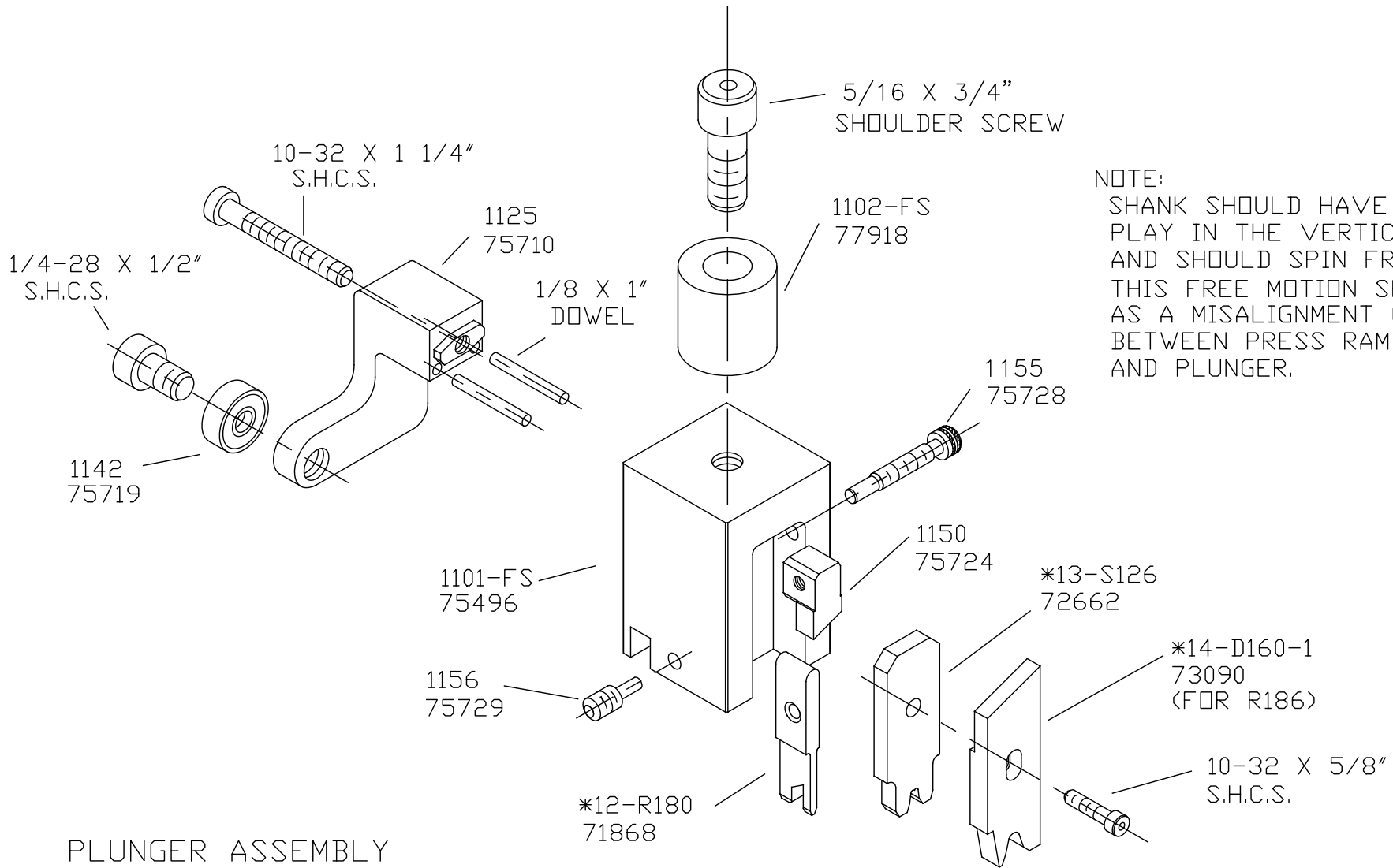




# CHUTE AND GUARD R176, R186



NEVER OPERATE APPLICATOR WITHOUT  
SAFETY GUARD IN POSITION.



NOTE:  
SHANK SHOULD HAVE FREE PLAY IN THE VERTICAL AXIS AND SHOULD SPIN FREELY, THIS FREE MOTION SERVES AS A MISALIGNMENT COUPLING BETWEEN PRESS RAM AND PLUNGER.

PLUNGER ASSEMBLY  
SIDE FEED  
R176, R186