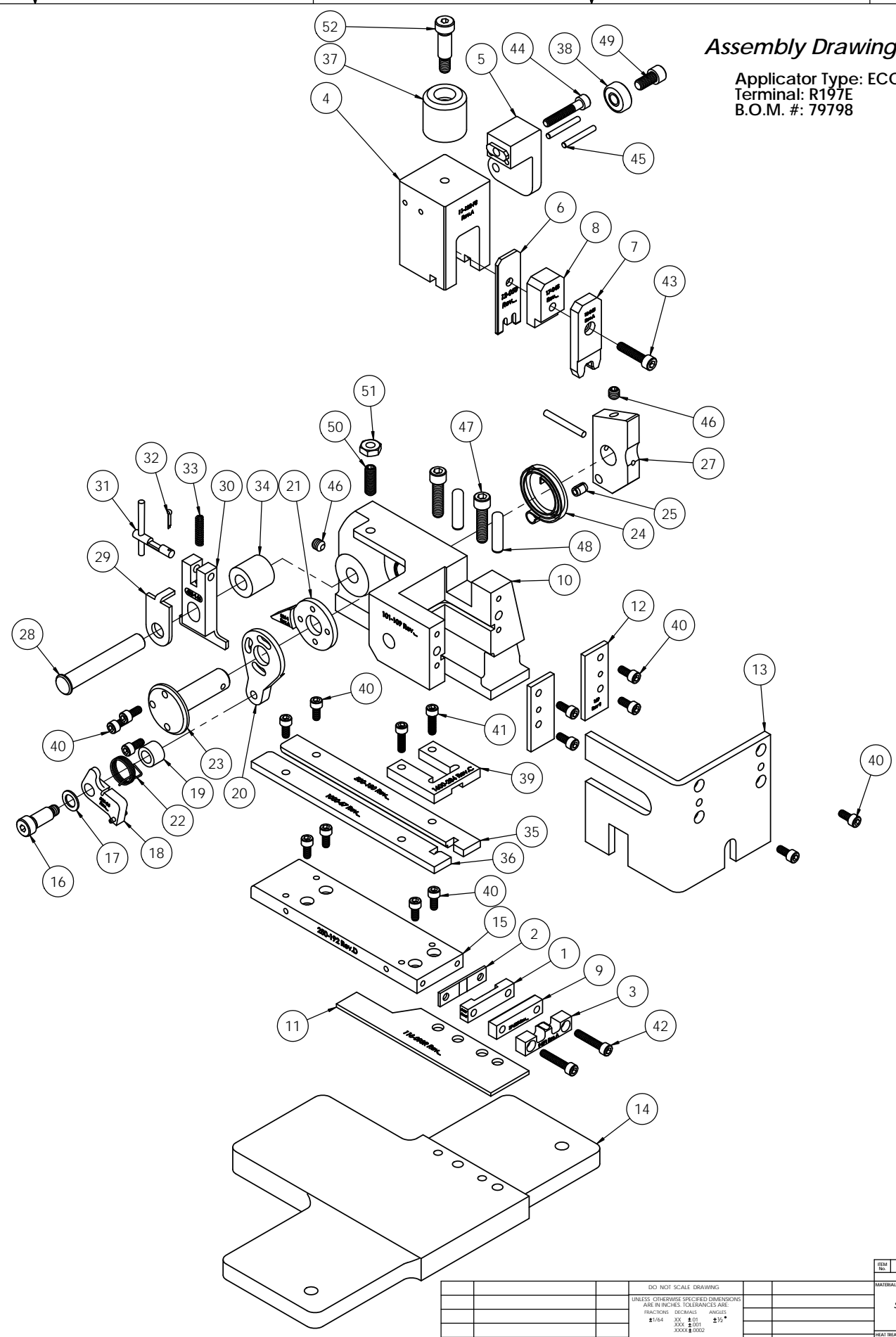


ITEM NO.	QTY.	Part_Code	PART NUMBER	DESCRIPTION
1	1	70186	8-067	Cut-off Die
2	1	70187	8-068	Cut-off Die
3	1	70957	9-071	Anvil
4	1	75647	11-122-FS	Plunger
5	1	75713	11B-1	Cam Roller Bracket
6	1	71616	12-050	Cut-off Punch
7	1	72380	13-045	Wire Rolling Tool
8	1	74759	17-045	Spacer
9	1	74769	17-625	Spacer
10	1	74120	101-109	Main Casting
11	1	70070	116-093R	Casting Spacer
12	2	69859	169	Gib
13	1	76686	179-6	Rear Guard
14	1	73935	202	Base Plate
15	1	74150	250-192	Die Plate
16	1	76858	301-3	Shoulder Screw
17	1	73215	302-.035	Front Spacer
18	1	74118	303-36	Feed Finger
19	1	73214	304-.340	Rear Spacer
20	1	74393	305-Finished	Feed Finger Arm
21	1	77049	306-1	Feed Stop Arm
22	1	76788	307-5	Feed Finger Spring
23	1	74400	308-Finished	Feed Shaft
24	1	74402	310	Cam Return Spring
25	1	73706	311-1	Spring Pin
26	1	77106	312-1	Cam Taper Pin
27	1	63654	314L-9A-CP	Cam Body
28	1	74495	401-Finished	Brake Shaft
29	1	74496	402	Spring Retainer
30	1	74648	403-146	Brake Body
31	1	74673	404_405as	Brake Cam Ass'y
32	1	74675	406	Cotter Pin
33	1	74676	407	Brake Spring
34	1	74122	408-.705	Brake Spacer
35	1	74870	500-180	Rear Guide Rail
36	1	75268	1000-67	Front Guide Rail
37	1	77918	1102-FS	Floating Shank
38	1	75719	1142	Cam Roller Bearing
39	1	74119	1600-284	Wire Stop/Stripper
40	15	63161	8-32_.38sh	#8-32 x 3/8" Socket Hd Cap Screw
41	2		8-32_.56sh	#8-32 x 9/16" Socket Hd Cap Screw
42	2	63949	8-32_.88sh	#8-32 x 7/8" Socket Hd Cap Screw
43	1	70925	10-32_.88sh	#10-32 x 7/8" Socket Hd Cap Screw
44	1	62307	10-32_1.12sh	#10-32 x 1 1/8" Socket Hd Cap Screw
45	2	62849	1.8_1.00dp	1/8" x 1" Dowel
46	2	63511	1.4-20_.25sf	1/4-20 x 1/4" Socket Hd Set Screw
47	2	63168	1.4-20_1.00sh	1/4-20 x 1" Socket Hd Cap Screw
48	2	63510	1.4_1.00dp	1/4 x 1" Dowel Pin
49	1	62184	1.4-28_.50sh	1/4-28 x 1/2" Socket Hd Cap Screw
50	1	63513	1.4-28_.75ss	1/4-28 x 3/4" Socket Set Screw
51	1	63512	1.4-28_jn	1/4-28 Jam Nut
52	1	78918	5.16_.75shs	5/16 x 3/4" Shoulder Screw

NOTE: ITEMS MARKED IN BOLD TEXT ARE HIGH WEAR ITEMS



Assembly Drawing and Bill of Materials

Applicator Type: ECC Rear Feed Applicator
Terminal: R197E
B.O.M. #: 79798

ITEM NO.	PART NO.	DESCRIPTION	MATERIAL SPECIFICATION	QTY.	REVISION
1	70186	Cut-off Die		1	
2	70187	Cut-off Die		1	
3	70957	Anvil		1	
4	75647	Plunger		1	
5	75713	Cam Roller Bracket		1	
6	71616	Cut-off Punch		1	
7	72380	Wire Rolling Tool		1	
8	74759	Spacer		1	
9	74769	Spacer		1	
10	74120	Main Casting		1	
11	70070	Casting Spacer		1	
12	69859	Gib		2	
13	76686	Rear Guard		1	
14	73935	Base Plate		1	
15	74150	Die Plate		1	
16	76858	Shoulder Screw		1	
17	73215	Front Spacer		1	
18	74118	Feed Finger		1	
19	73214	Rear Spacer		1	
20	74393	Feed Finger Arm		1	
21	77049	Feed Stop Arm		1	
22	76788	Feed Finger Spring		1	
23	74400	Feed Shaft		1	
24	74402	Cam Return Spring		1	
25	73706	Spring Pin		1	
26	77106	Cam Taper Pin		1	
27	63654	Cam Body		1	
28	74495	Brake Shaft		1	
29	74496	Spring Retainer		1	
30	74648	Brake Body		1	
31	74673	Brake Cam Ass'y		1	
32	74675	Cotter Pin		1	
33	74676	Brake Spring		1	
34	74122	Brake Spacer		1	
35	74870	Rear Guide Rail		1	
36	75268	Front Guide Rail		1	
37	77918	Floating Shank		1	
38	75719	Cam Roller Bearing		1	
39	74119	Wire Stop/Stripper		1	
40	63161	#8-32 x 3/8" Socket Hd Cap Screw		15	
41		#8-32 x 9/16" Socket Hd Cap Screw		2	
42	63949	#8-32 x 7/8" Socket Hd Cap Screw		2	
43	70925	#10-32 x 7/8" Socket Hd Cap Screw		1	
44	62307	#10-32 x 1 1/8" Socket Hd Cap Screw		1	
45	62849	1/8" x 1" Dowel		2	
46	63511	1/4-20 x 1/4" Socket Hd Set Screw		2	
47	63168	1/4-20 x 1" Socket Hd Cap Screw		2	
48	63510	1/4 x 1" Dowel Pin		2	
49	62184	1/4-28 x 1/2" Socket Hd Cap Screw		1	
50	63513	1/4-28 x 3/4" Socket Set Screw		1	
51	63512	1/4-28 Jam Nut		1	
52	78918	5/16 x 3/4" Shoulder Screw		1	