



**REFERENCE LIST:
D263E
ECC APPLICATOR
BILL OF MATERIAL NUMBER
79802**

**WARNING !
NEVER OPERATE
THIS OR ANY
APPLICATOR
WITHOUT SAFETY
GUARD IN POSITION.**

| PART CODE | PART NUMBER | QUANTITY | DESCRIPTION |
|-----------|-------------|----------|-------------------------|
| 75594 | 11072-FS | (1) | PLUNGER |
| 77918 | 1102-FS | (1) | FLOATING SHANK |
| 75728 | 1155 | (1) | ADJUST SCREW |
| 75724 | 1150 | (1) | INSULATION BLOCK |
| 72333 | 12S-D265E | (1) | SPACER |
| 77187 | *12-513 | (1) | CUT-OFF PUNCH |
| 76401 | *13-188 | (1) | WIRE ROLLING TOOL |
| 76407 | *14-054 | (1) | INSULATION ROLLING TOOL |
| 75713 | 11B1 | (1) | CAM ROLLER BRACKET |
| 75719 | 1142 | (1) | CAM ROLLER BEARING |
| 74424 | 314-11 | (1) | CAM BODY |
| 77106 | 312-1 | (1) | CAM TAPER PIN |
| 74402 | 310 | (1) | CLOCK SPRING |
| 73706 | 311-1 | (1) | ROLL PIN |
| 77381 | 169-9 | (1) | GIB |
| 75882 | 1600-121 | (1) | STRIPPER |
| 73219 | 101-65 | (1) | TOP CASTING |
| 77980 | 408-670 | (1) | BRAKE BUSHING |
| 74676 | 407 | (1) | SPRING |
| 74675 | 406 | (1) | COTTER PIN |
| 74674 | 405 | (1) | TAPER PIN |
| 74673 | 404 | (1) | BRAKE CAM |
| 70069 | 403-188 | (1) | BRAKE BODY |
| 74496 | 402 | (1) | BRAKE SPRING RETAINER |
| 74495 | 401 | (1) | BRAKE SHAFT |
| 77049 | 306-1 | (1) | FEED FINGER STOP |
| 74393 | 305 | (1) | FEED FINGER ARM |
| 73214 | 304-340 | (1) | REAR SPACER |
| 74400 | 308 | (1) | FEED SHAFT |
| 76860 | 307-8 | (1) | SPRING |
| 70099 | 7A-D265E | (1) | FEED FINGER |
| 73215 | 302-035 | (1) | FRONT SPACER |
| 76918 | 301-3 | (1) | SHOULDER SCREW |
| 70070 | 116-093R | (1) | CASTING SPACER |
| 71564 | 10R-D265E | (1) | RIGHT GUIDE |
| 71550 | 10L-D265E | (1) | LEFT GUIDE |
| 70309 | 8A-DF30 | (1) | DIE PLATE |

**NOTE: ITEMS MARKED WITH AN *
ARE HIGH WEAR ITEMS**



REFERENCE LIST:
D263E
ECC APPLICATOR
BILL OF MATERIAL NUMBER
79802

WARNING !
NEVER OPERATE
THIS OR ANY
APPLICATOR
WITHOUT SAFETY
GUARD IN POSITION.

| PART CODE | PART NUMBER | QUANTITY | DESCRIPTION |
|-----------|-------------|----------|----------------------------|
| 70187 | *8-068 | (1) | DIE |
| 70580 | *8B-D265E | (1) | DIE |
| 77233 | *9-223 | (1) | INSULATION ANVIL |
| 76396 | *9-518 | (1) | WIRE ANVIL |
| 70873 | 8P-D260 | (1) | PLUNGER LIFTER |
| 74754 | 1600-291 | (1) | TERMINAL HOLDOWN |
| 73705 | 93-014-65 | (1) | SPRING |
| 78084 | 202-A | (1) | BASE PLATE |
| 77512 | GS-060 | (2) | GUARD SPACER |
| 73967 | 179-23 | (1) | GUARD |
| | | | |
| | | | |
| | | (2) | 10-32 X 1 1/4" S.H.C.S. |
| | | (1) | 1/4-28 X 1/2" S.H.C.S. |
| | | (2) | 1/8 X 1" DOWEL |
| | | (1) | 5/16 X 3/4" SHOULDER SCREW |
| | | (1) | 1/4-28 X 5/8" S.S.S. |
| | | (2) | 1/4-20 X 1" S.H.C.S. |
| | | (2) | 1/4 X 1" DOWEL |
| | | (1) | 1/4-28 JAM NUT |
| | | (2) | 1/4-20 X 1/4" S.S.S. |
| | | (11) | 8-32 X 3/8" S.H.C.S. |
| | | (1) | 8-32 X 1/4" S.S.S. |
| | | (2) | 6-32 X 1/4" S.H.C.S. |
| | | (2) | 8-32 X 1/2" S.H.C.S. |
| | | (2) | 10-32 X 3/4" S.H.C.S. |
| | | (2) | 8-32 X 1 1/4" S.H.C.S. |
| | | | |
| | | | |
| | | | |
| | | | |
| | | | |
| | | | |

NOTE: ITEMS MARKED WITH AN *
ARE HIGH WEAR ITEMS

*ECC APPLICATOR
REAR FEED
D-263E*

8-32 X 3/8 S.H.C.S. (4)

6-32 X 1/4 S.H.C.S. (2)

LEFT GUIDE
10L-D265E
71550

TERMINAL HOLD DOWN
1600-291
74754

DIE PLATE
8A-DF30
70309

RIGHT GUIDE
10R-D265E
71564

PLUNGER LIFTER
8P-D260
78073

SPRING
93-014-65
73705

WIRE ANVIL
*9-518
76396

DIE
*8-068
70187

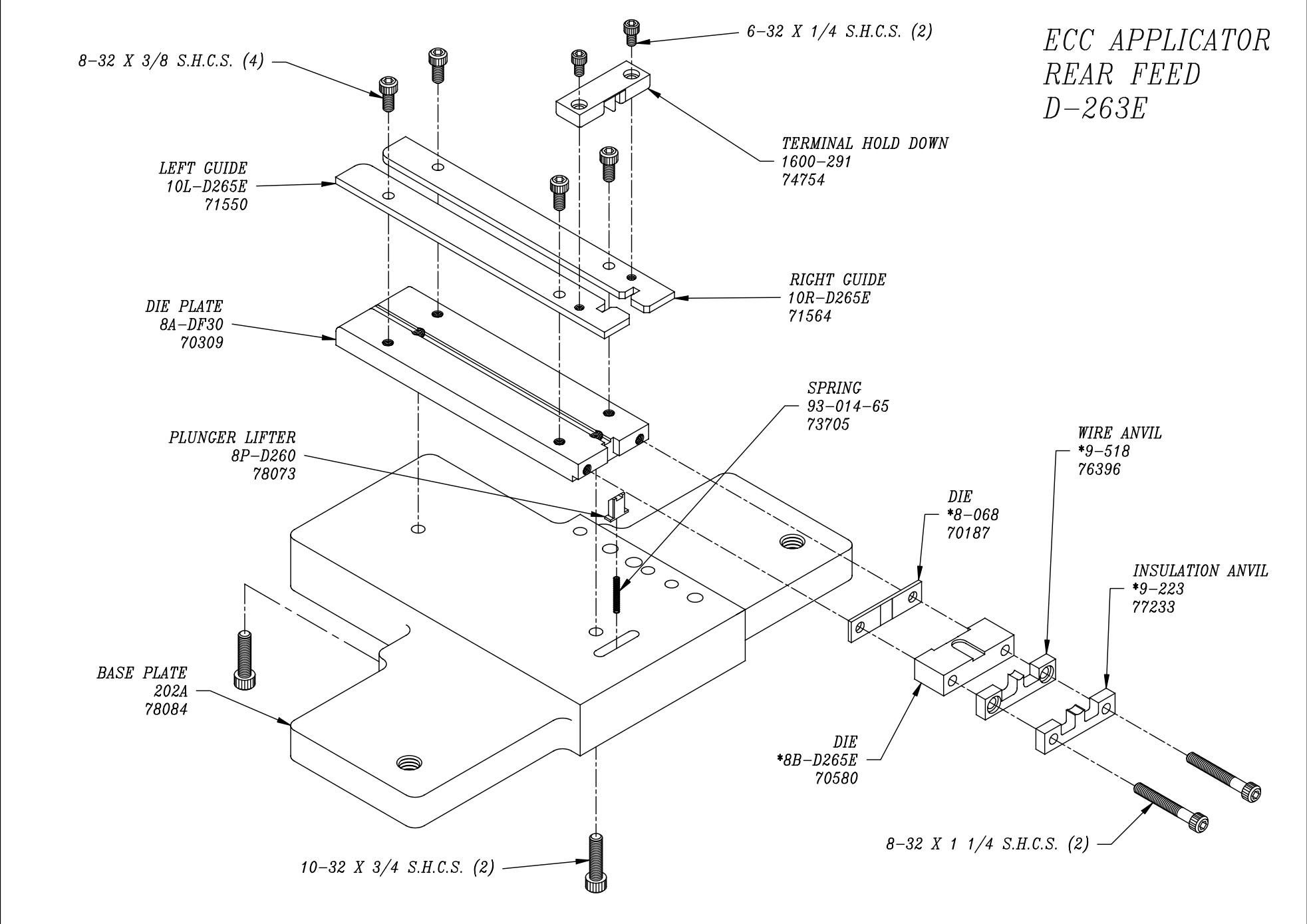
INSULATION ANVIL
*9-223
77233

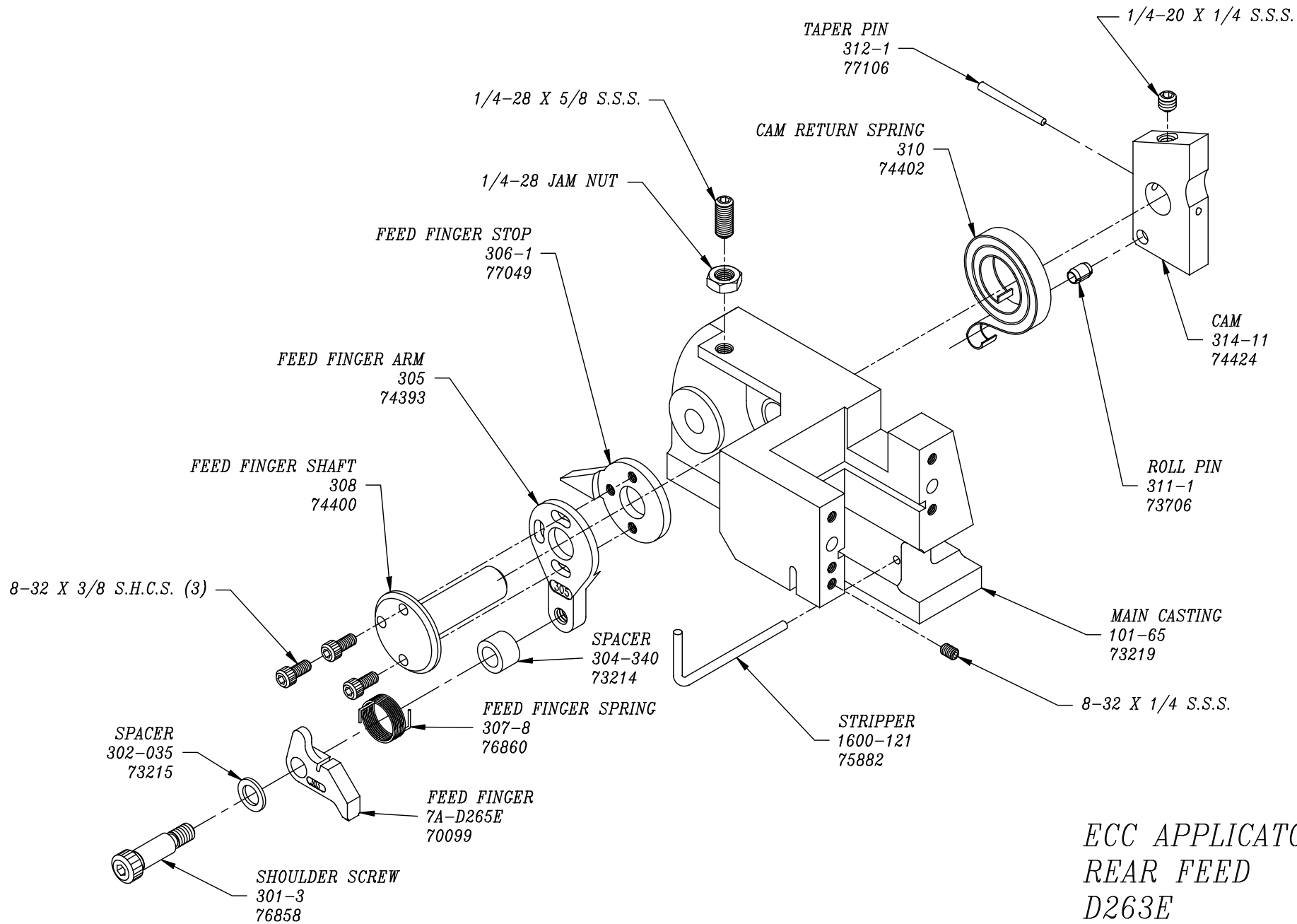
BASE PLATE
202A
78084

DIE
*8B-D265E
70580

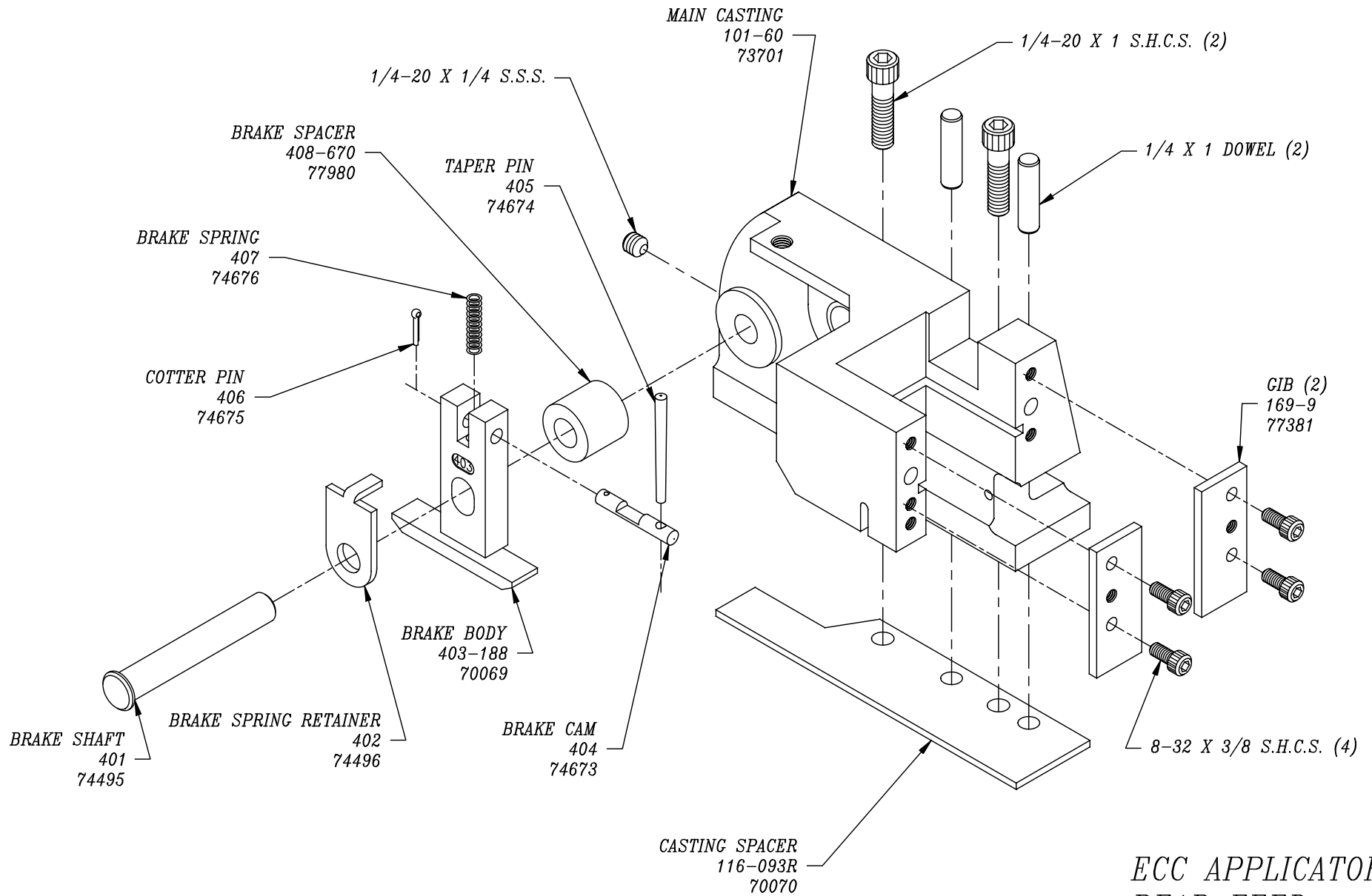
8-32 X 1 1/4 S.H.C.S. (2)

10-32 X 3/4 S.H.C.S. (2)

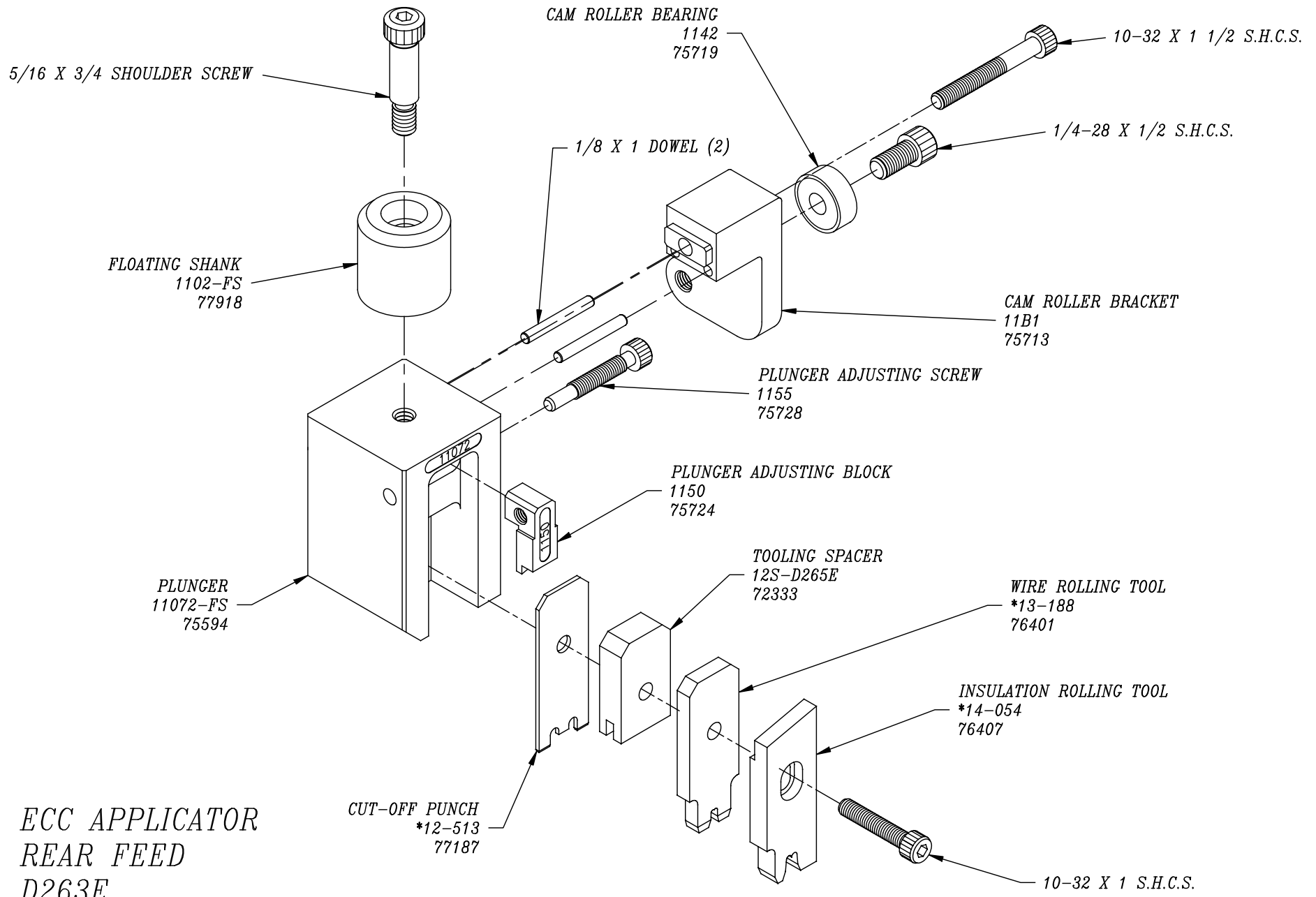




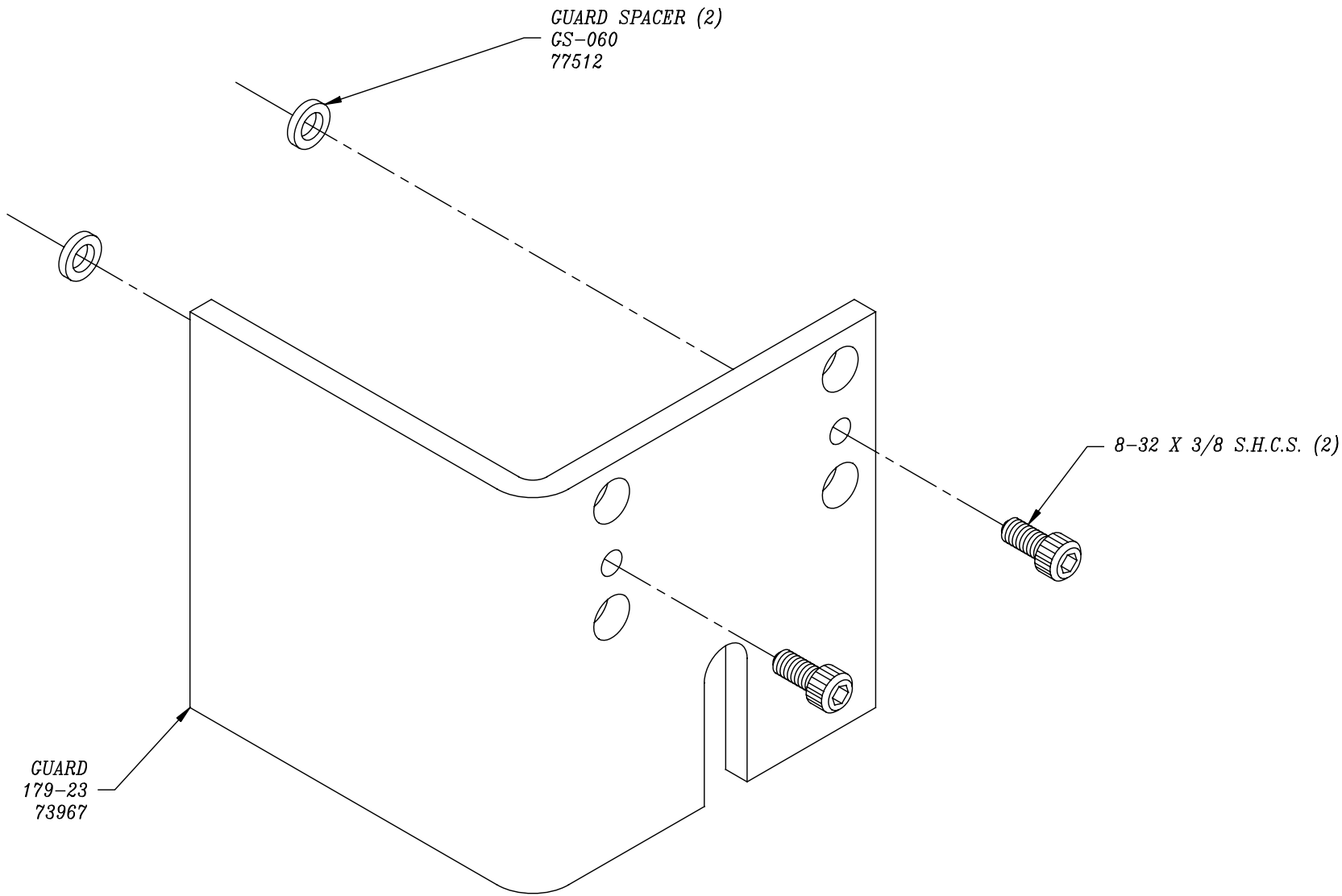
ECC APPLICATOR
 REAR FEED
 D263E



ECC APPLICATOR
 REAR FEED
 D263E



*ECC APPLICATOR
REAR FEED
D263E*



*ECC APPLICATOR
REAR FEED
D263E*