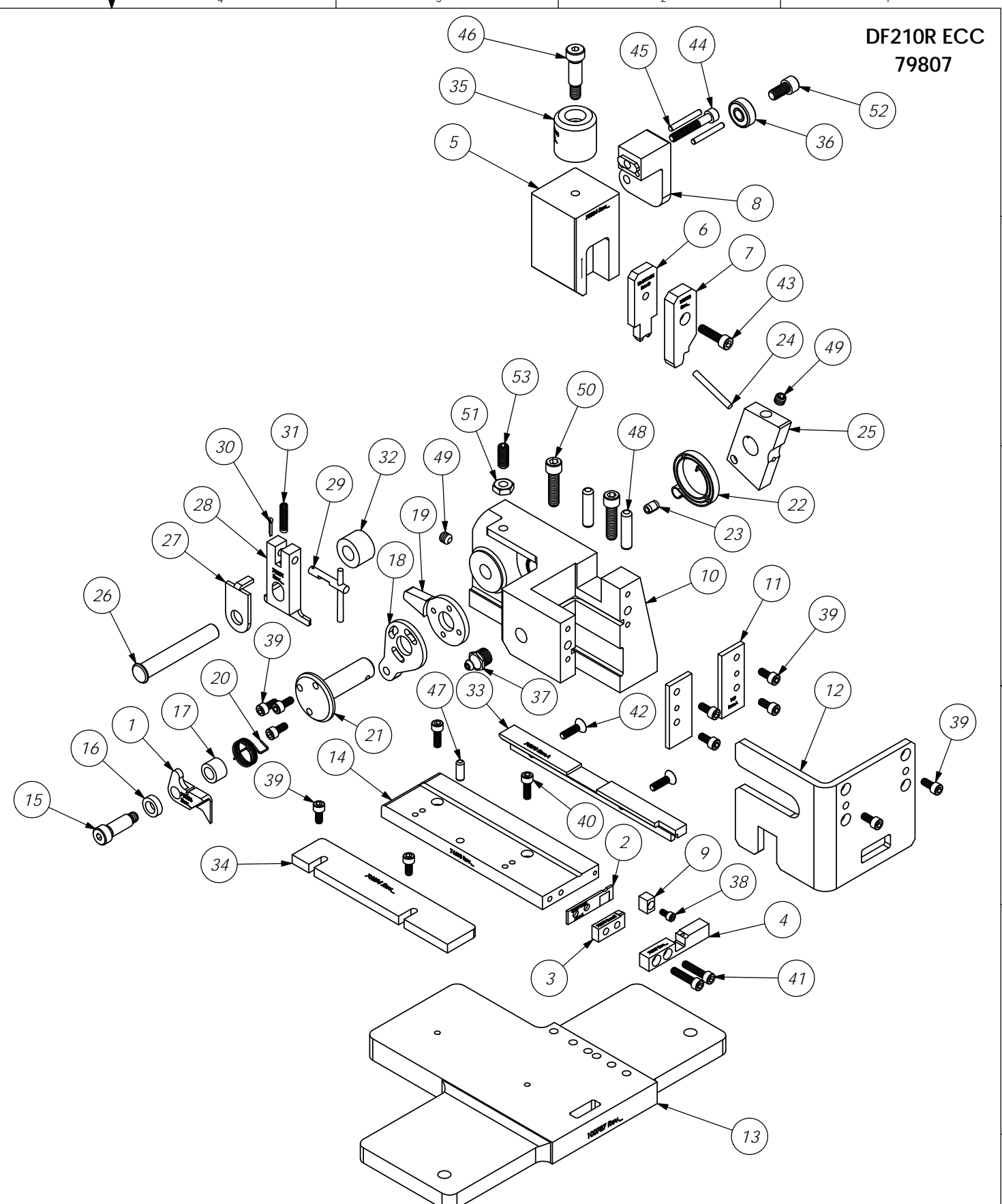


ITEM NO.	Part Code	PART NUMBER	DESCRIPTION	QTY.
1	70056	7A-DF211R-N	Feed Finger	1
2	70470	8B-DF120S	Cut-Off Die	1
3	70879	8S-DF220L-N	Die Spacer	1
4	76869	9-226	Anvil	1
5	78034	11-DF211N-FS	Plunger	1
6	71819	12-DF110N	Cut-off Punch	1
7	100788	13-DF210R-1	Wire Rolling Tool	1
8	75713	11B-1	Cam Roller Bracket	1
9	70583	17-019	Spacer	1
10	63903	101-35	Main Casting	1
11	69859	169	Gib	2
12	77033	177	Osha Cover	1
13	100787	202-DF210R	Base Plate	1
14	74693	250-292	Feed Plate	1
15	76873	301-4	Shoulder Screw	1
16	70206	304-.155	Feed Finger Spacer	1
17	70202	304-.345	Rear Spacer	1
18	76829	305-1	Feed Finger Arm	1
19	74396	306	Feed Stop Arm	1
20	76859	307-6	Feed Finger Spring	1
21	74400	308-Finished	Feed Shaft	1
22	74402	310	Cam Return Spring	1
23	73706	311-1	Spring Pin	1
24	77106	312-1	Cam Taper Pin	1
25	74422	314L-9A	Cam	1
26	74495	401-Finished	Brake Shaft	1
27	74496	402	Spring Retainer	1
28	70201	403-175	Brake Body	1
29	74673	404_405as	Brake Cam Ass'y	1
30	74675	406	Cotter Pin	1
31	74676	407	Brake Spring	1
32	70200	408-.505	Brake Spacer	1
33	74973	500-283	Right Guide Rail	1
34	74694	1000-158	Left Guide Rail	1
35	77918	1102-FS	Floating Shank	1
36	75719	1142	Cam Roller Bearing	1
37	63506	McMaster-Carr #1095K11	1/8 NPT Grease Fitting	1
38		5-40_.25sh	#5-40 x 5/16" Socket Hd Cap Screw	1
39	63161	8-32_.38sh	#8-32 x 3/8" Socket Hd Cap Screw	11
40	63164	8-32_.50sh	#8-32 x 1/2" Socket Hd Cap Screw	2
41	63787	8-32_.75sh	#8-32 x 3/4" Socket Hd Cap Screw	2
42	76799	8-32_.63fh	#8-32 x 5/8 Flat Hd Cap Screw	2
43	63532	10-32_.75sh	#10-32 x 3/4" Socket Hd Cap Screw	1
44	77396	10-32_1.25sh	#10-32 x 1 1/4" Socket Hd Cap Screw	1
45	62849	1.8_1.00dp	1/8" x 1" Dowel	2
46	78918	5.16_.75shss	5/16 x 3/4" Shoulder Screw	1
47	63158	3.16_.50dp	Φ 3/16" x 1/2" Dowel Pin	1
48	63510	1.4_1.00dp	1/4 x 1" Dowel Pin	2
49	63511	1.4-20_.25ssf	1/4-20 x 1/4" Socket Hd Set Screw	2
50	63168	1.4-20_1.00sh	1/4-20 x 1" Socket Hd Cap Screw	2
51	63512	1.4-28_jn	1/4-28 Jam Nut	1
52	62184	1.4-28_.50sh	1/4-28 x 1/2" Socket Hd Cap Screw	1
53	63513	1.4-28_.63ss	1/4-28 x 5/8" Socket Set Screw	1



**DF210R ECC
79807**

ITEM NO.	PART No.	DESCRIPTION	MATERIAL SPECIFICATION	QTY	RECD
PARTS LIST					
MATERIAL:		ETCO ENGINEERED PRODUCTS 25 BELLOWS STREET WARWICK RI 02888 (401)-467-2400			
See Parts List		DF210R ECC Rear Applicator			
HEAT TREAT:					
FINISH:					
DWG. NO.		DF210R ECC			
SCALE: 1:2		CAD FILE:		CHECKED BY:	DATE:
DRAWN BY: SCJ		DATE:		DATE:	DATE:
LVL		REVISION		BY/DATE	
				3/10/20	
				QTY	
				USED ON	
				APPLICATION	