



**REFERENCE LIST:  
HCRJ-2-F  
DIE SET APPLICATOR  
DUAL ATTACH  
BILL OF MATERIAL NUMBER  
79830**

**WARNING !  
NEVER OPERATE  
THIS OR ANY  
APPLICATOR  
WITHOUT SAFETY  
GUARD IN POSITION.**

PART CODE	PART NUMBER	QUANTITY	DESCRIPTION
74836	199-32	(1)	SAFETY GUARD
73725	26-136	(1)	SPREADER MOUNTING BRACKET
70274	26-138	(1)	RETURN SPRING
70275	26-137	(1)	WIRE SPREADER
73727	303A-106	(1)	FEED FINGER SHAFT
73728	22-014	(1)	SLIDE BLOCK
75720	1142-1	(1)	CAM YOKE FOLLOWER
73729	401-4	(1)	BRAKE SUPPORT BRACKET
73730	26-135	(2)	FEED SLIDE SHAFT
73732	403-187	(1)	BRAKE
73733	*8-281-1	(1)	REAR CUT-OFF DIE
73736	*8A-281-1	(1)	FRONT CUT-OFF DIE
73738	11-217	(1)	PUNCH HOLDER
74398	307-53	(1)	FEED FINGER SPRING
78253	1600A-261	(1)	STRIPPER INSERT
78251	*12-240	(1)	CUT-OFF PUNCH
78252	*13-264	(1)	ROLLING TOOL
78250	*9-283	(1)	ANVIL
73739	33-009	(1)	SHAFT SUPPORT BRACKET
73740	34-010	(1)	SHAFT SUPPORT / FEED STOP
73741	250A-376	(1)	FEED PLATE SUPPORT
73742	32A-048	(1)	FRONT PRESSURE CAP
73743	1600-261	(1)	STRIPPER
73744	1000-251	(1)	FRONT GUIDE RAIL
73745	250-376	(1)	FEED PLATE
73746	500-378	(2)	REAR GUIDE RAIL
73747	32-048	(2)	DIE HOLDER
73748	314-146	(1)	CAM
73749	2012	(2)	STOCK CHUTE
73750	303-110	(1)	FEED FINGER
73751	13-M210/111	(1)	FEED SPRING
73752	CYR-1-S	(1)	McGILL CAM ROLLER
73974	302-.122 THK.	(1)	SPACER
73753	#5-041 X .90	(1)	BRAKE SPRING

**NOTE: ITEMS MARKED WITH AN \*  
ARE HIGH WEAR ITEMS**





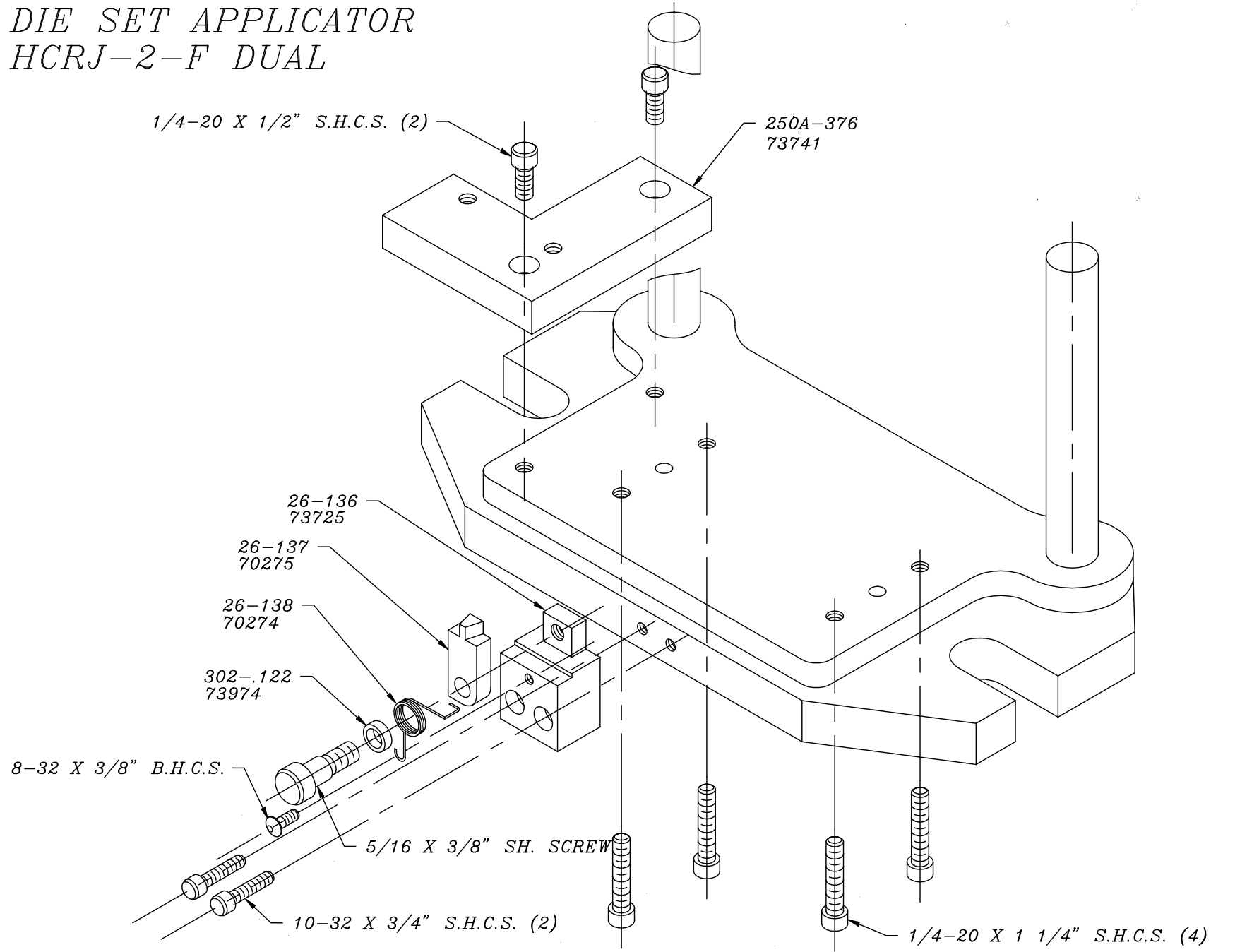
**REFERENCE LIST:  
HCRJ-2-F  
DIE SET APPLICATOR  
DUAL ATTACH  
BILL OF MATERIAL NUMBER  
79830**

**WARNING !  
NEVER OPERATE  
THIS OR ANY  
APPLICATOR  
WITHOUT SAFETY  
GUARD IN POSITION.**

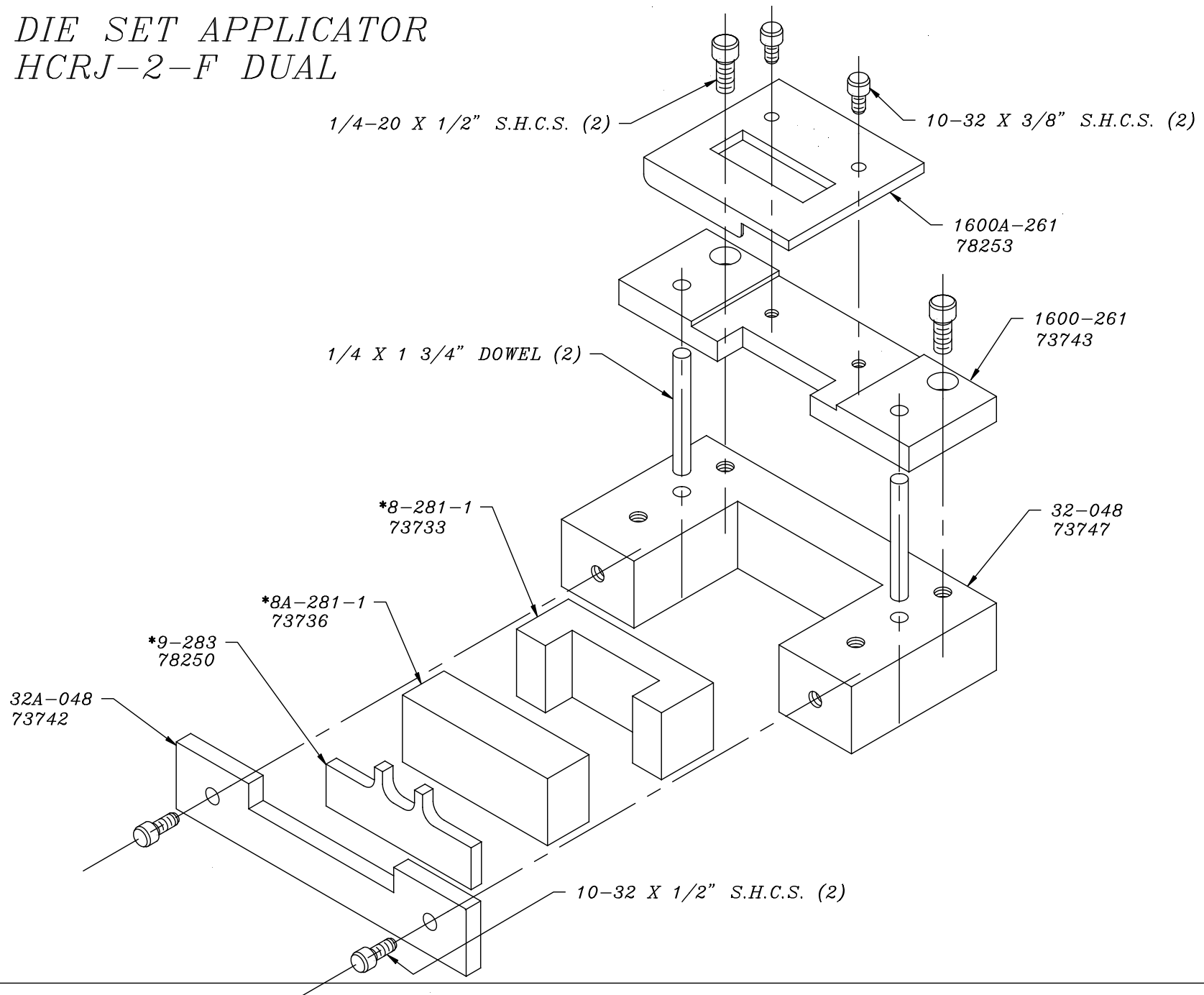
<b>PART CODE</b>	<b>PART NUMBER</b>	<b>QUANTITY</b>	<b>DESCRIPTION</b>

**NOTE: ITEMS MARKED WITH AN \*  
ARE HIGH WEAR ITEMS**

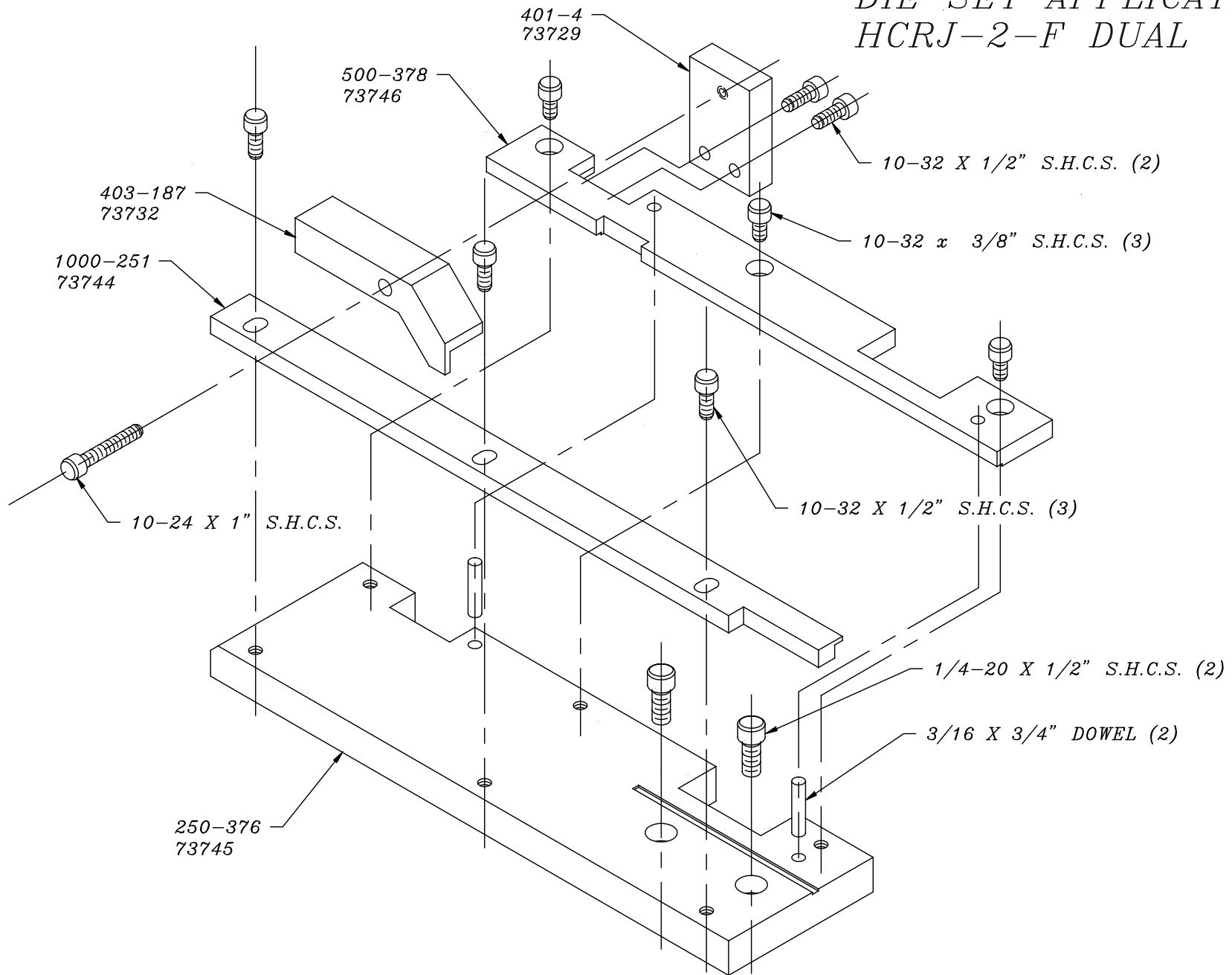
# DIE SET APPLICATOR HCRJ-2-F DUAL

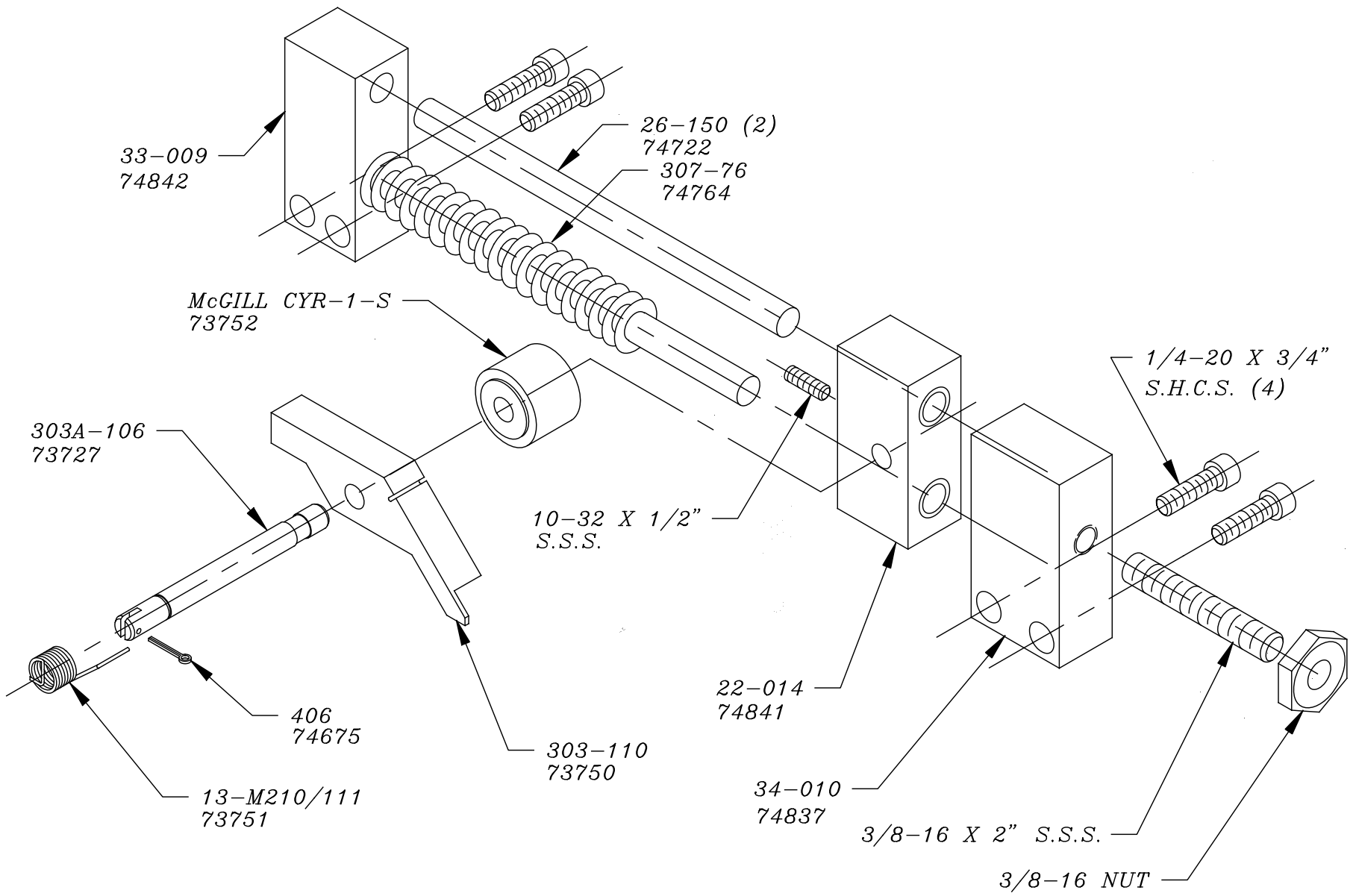


# DIE SET APPLICATOR HCRJ-2-F DUAL



# DIE SET APPLICATOR HCRJ-2-F DUAL





*DIE SET APPLICATOR  
HCRJ-2-F DUAL*

*DIE SET APPLICATOR  
HCRJ-2-F DUAL*

