



**REFERENCE LIST:  
R16S  
ECC APPLICATOR  
BILL OF MATERIAL NUMBER  
79831**

**WARNING !  
NEVER OPERATE  
THIS OR ANY  
APPLICATOR  
WITHOUT SAFETY  
GUARD IN POSITION.**

| PART CODE | PART NUMBER | QUANTITY | DESCRIPTION             |
|-----------|-------------|----------|-------------------------|
| 75495     | 1100-FS     | (1)      | PLUNGER                 |
| 77918     | 1102-FS     | (1)      | FLOATING SHANK          |
|           |             | N/A      | CUT-OFF SCREW           |
| 75728     | 1155        | (1)      | INSULATION SCREW        |
| 75724     | 1150        | (1)      | INSULATION BLOCK        |
| 75710     | 1125        | (1)      | CAM ROLLER BRACKET      |
| 75719     | 1142        | (1)      | CAM ROLLER BEARING      |
| 71770     | *12-R16-2   | (1)      | CUT-OFF PUNCH           |
| 78357     | *13-346     | (1)      | WIRE ROLLING TOOL       |
| 73090     | *14-D160-1  | (1)      | INSULATION ROLLING TOOL |
| 74410     | 314L-2      | (1)      | CAM                     |
| 74403     | 311         | (1)      | SPRING PIN              |
| 74404     | 312         | (1)      | CAM TAPER PIN           |
| 74402     | 310         | (1)      | CAM RETURN SPRING       |
| 73899     | 101         | (1)      | TOP CASTING             |
| 76969     | 169         | (2)      | UNIVERSAL GIBS          |
| 74675     | 406         | (1)      | COTTER PIN              |
| 74676     | 407         | (1)      | BRAKE SPRING            |
| 77286     | 408-687     | (1)      | BRAKE BUSHING           |
| 74674     | 405         | (1)      | TAPER PIN               |
| 74673     | 404         | (1)      | BRAKE CAM               |
| 74498     | 403-1       | (1)      | BRAKE BODY              |
| 74496     | 402         | (1)      | SPRING RETAINER         |
| 74495     | 401         | (1)      | BRAKE SHAFT             |
| 74396     | 306         | (1)      | FEED FINGER STOP        |
| 74393     | 305         | (1)      | FEED FINGER ARM         |
| 74400     | 308         | (1)      | FEED SHAFT              |
| 76894     | 304-500     | (1)      | REAR SPACER             |
| 76860     | 307-8       | (1)      | SPRING                  |
| 70083     | 7A-R15-2    | (1)      | FEED FINGER             |
|           |             | N/A      | FRONT SPACER            |
| 76873     | 301-4       | (1)      | SHOULDER SCREW          |
| 73952     | 231         | (2)      | STRIPPER SPRING         |
| 78358     | 1600-340    | (1)      | WIRE STRIPPER / STOP    |
| 73955     | 235         | (1)      | GUIDE SPACER BLOCK      |
| 75019     | 521         | (1)      | REAR / RIGHT GUIDE      |

**NOTE: ITEMS MARKED WITH AN \*  
ARE HIGH WEAR ITEMS**

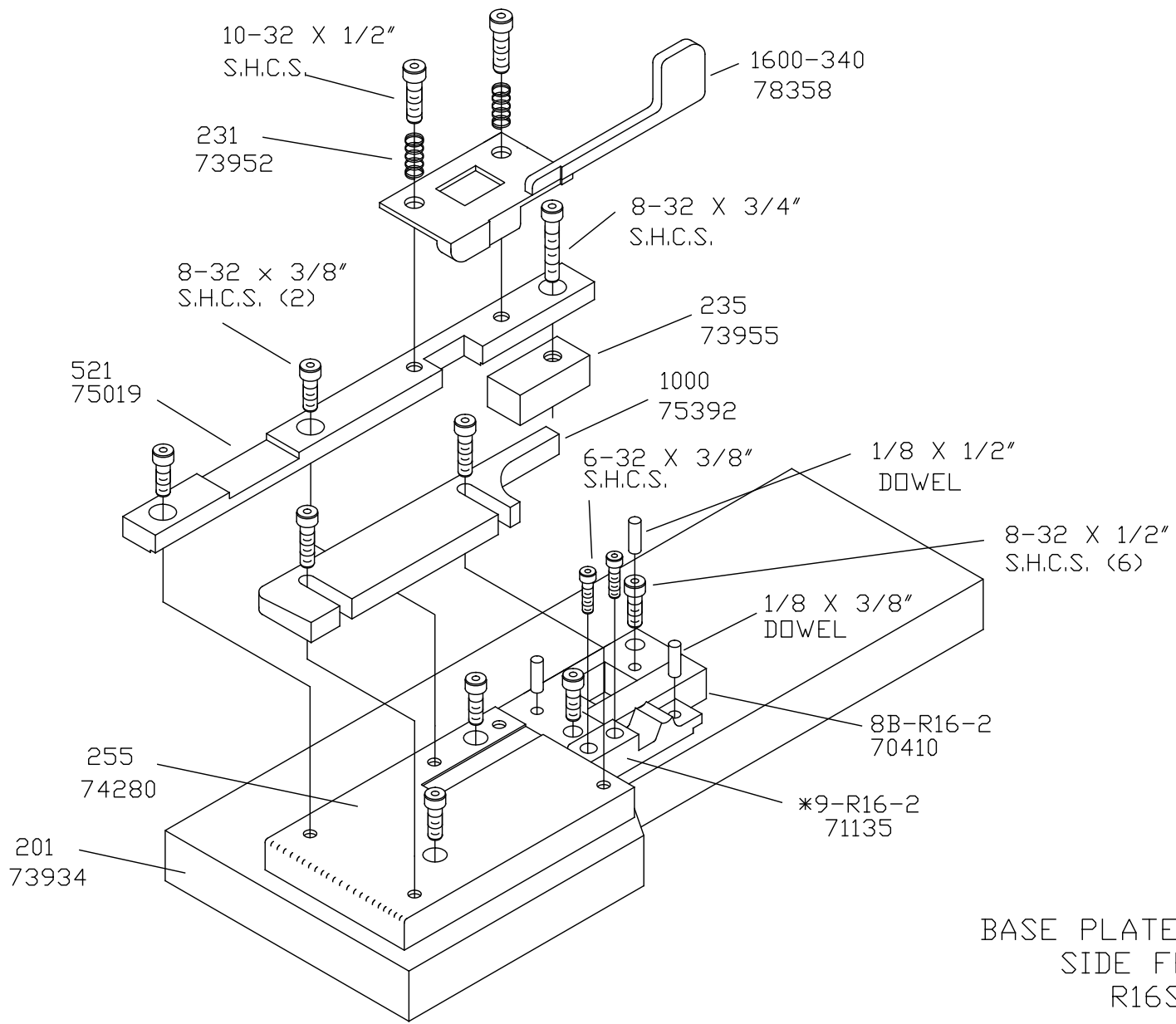


**REFERENCE LIST:  
R16S  
ECC APPLICATOR  
BILL OF MATERIAL NUMBER  
79831**

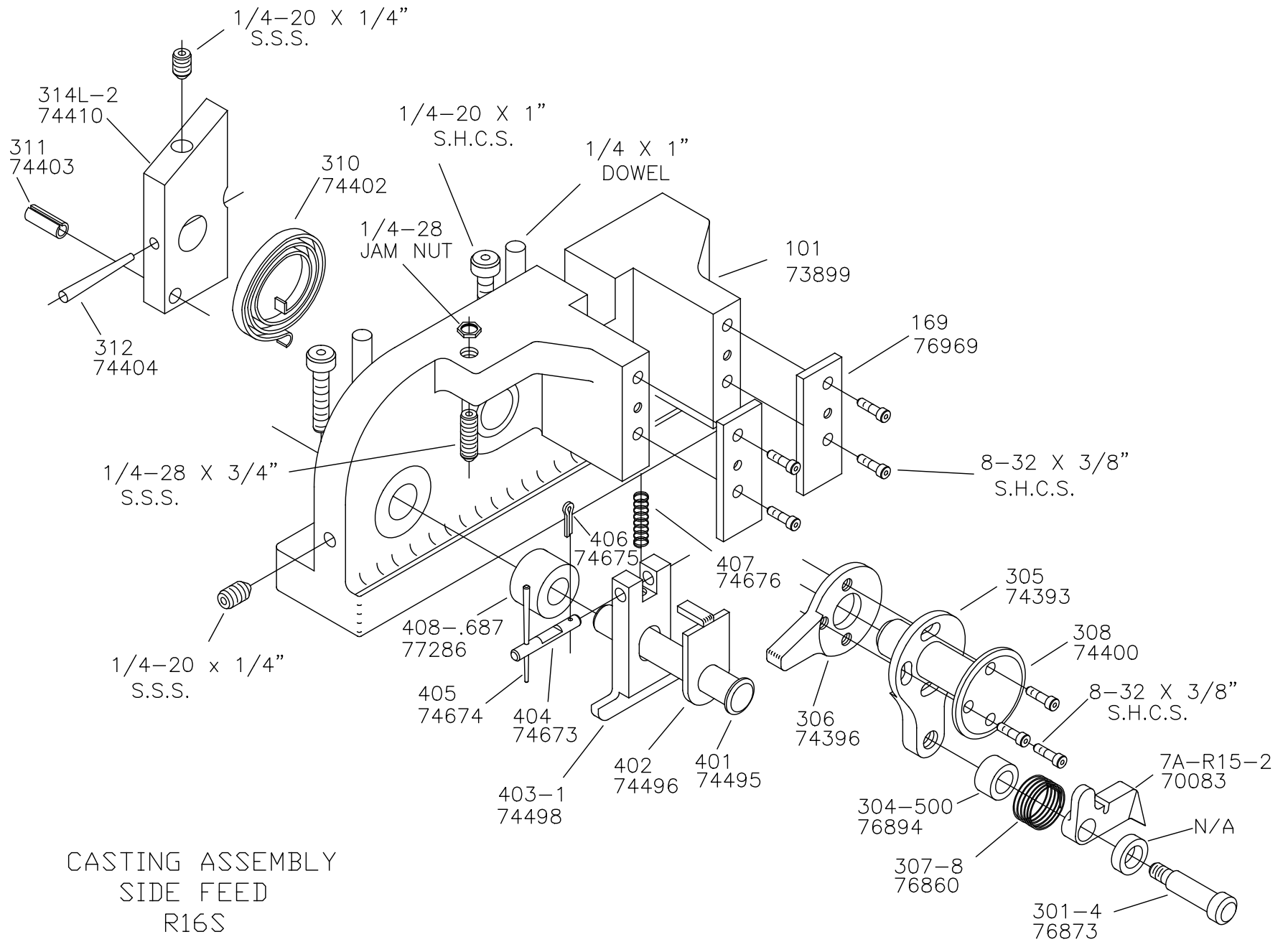
**WARNING !  
NEVER OPERATE  
THIS OR ANY  
APPLICATOR  
WITHOUT SAFETY  
GUARD IN POSITION.**

| PART CODE | PART NUMBER | QUANTITY | DESCRIPTION                |
|-----------|-------------|----------|----------------------------|
| 75392     | 1000        | (1)      | FRONT / LEFT GUIDE         |
| 74280     | 255         | (1)      | DIE PLATE                  |
| 73934     | 201         | (1)      | BASE PLATE                 |
| 70410     | *8B-R16-2   | (1)      | DIE                        |
| 71135     | *9-R16-2    | (1)      | ANVIL                      |
| 73528     | 6-047-50    | (2)      | CUT-OFF SPRING             |
| 76186     | 1800        | (1)      | STOCK CHUTE                |
|           | N/A         | (1)      | GUARD SPACER               |
| 73922     | 176         | (1)      | GUARD                      |
|           |             |          |                            |
|           |             | (2)      | 1/4 X 3/8" SHOULDER SCREW  |
|           |             | (1)      | 10-32 X 1 1/4" S.H.C.S.    |
|           |             | (1)      | 1/4-28 X 1/2" S.H.C.S.     |
|           |             | (2)      | 1/8 X 1" DOWEL             |
|           |             | (1)      | 5/16 X 3/4" SHOULDER SCREW |
|           |             | (1)      | 1/4-28 X 3/4" S.S.S.       |
|           |             | (2)      | 1/4-20 X 1" S.H.C.S.       |
|           |             | (2)      | 1/4 X 1" DOWEL             |
|           |             | (1)      | 1/4-28 JAM NUT             |
|           |             | (2)      | 1/4-20 X 1/4" S.S.S.       |
|           |             | (10)     | 8-32 X 3/8" S.H.C.S.       |
|           |             | (1)      | 10-32 X 3/8" S.H.C.S.      |
|           |             | (2)      | 10-32 X 1/2" S.H.C.S.      |
|           |             | (1)      | 8-32 X 3/4" S.H.C.S.       |
|           |             | (2)      | 6-32 X 3/8" S.H.C.S.       |
|           |             | (6)      | 8-32 X 1/2" S.H.C.S.       |
|           |             | (1)      | 1/8 X 1/2" DOWEL           |
|           |             | (2)      | 1/8 X 3/8" DOWEL           |
|           |             |          |                            |
|           |             |          |                            |
|           |             |          |                            |
|           |             |          |                            |

**NOTE: ITEMS MARKED WITH AN \*  
ARE HIGH WEAR ITEMS**

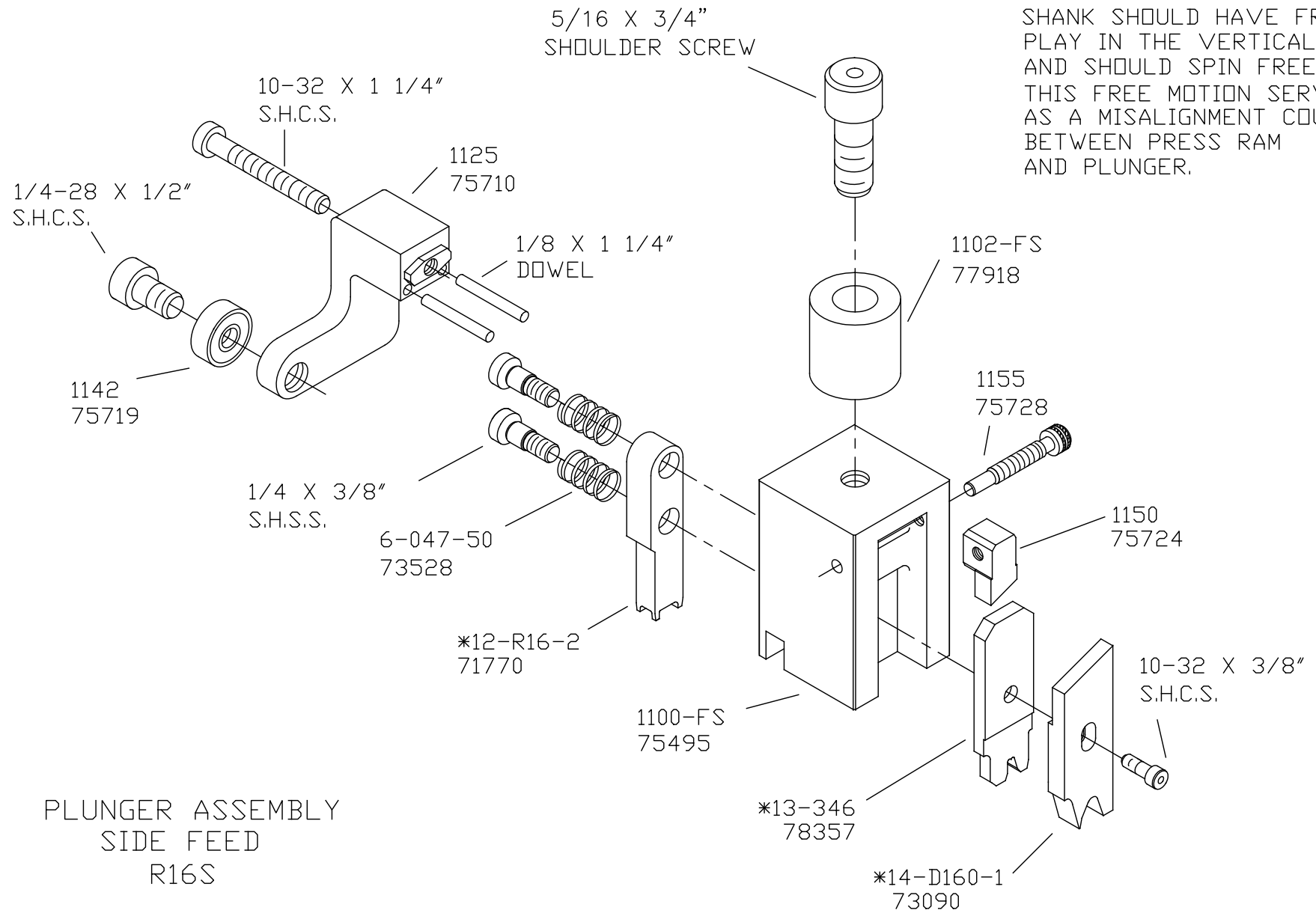


BASE PLATE ASSEMBLY  
 SIDE FEED  
 R16S

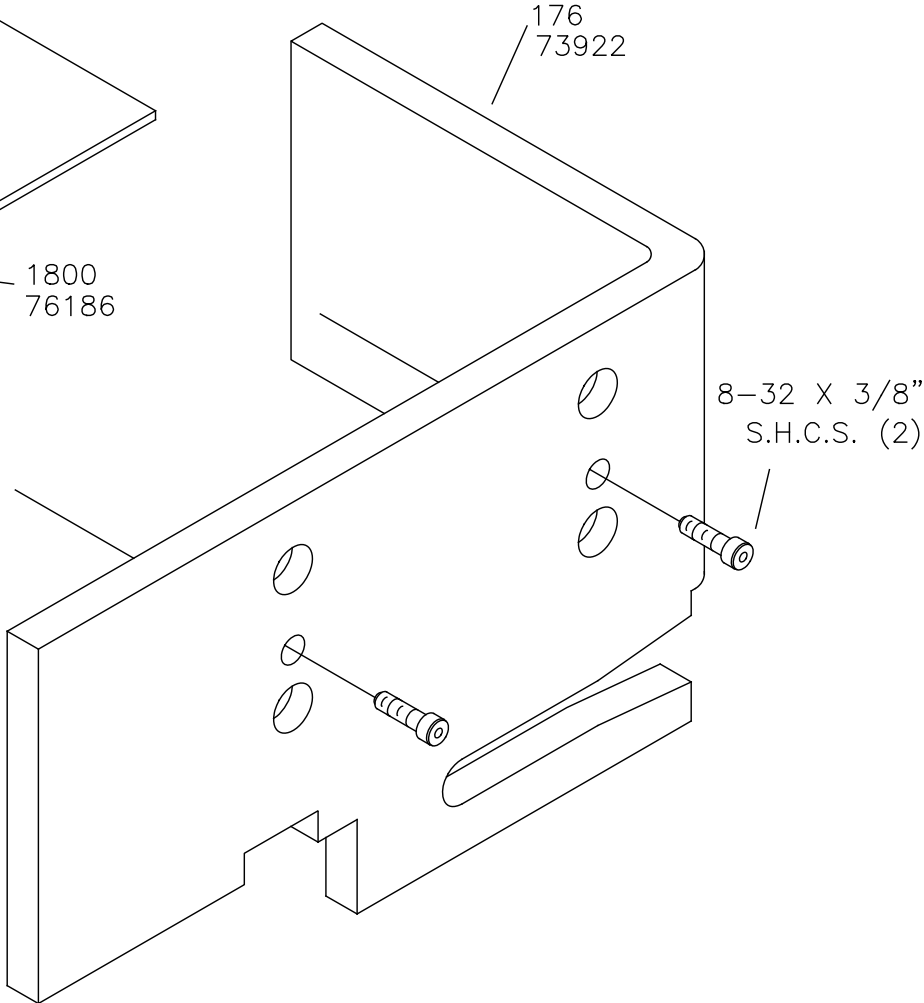
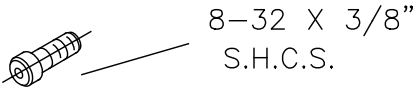
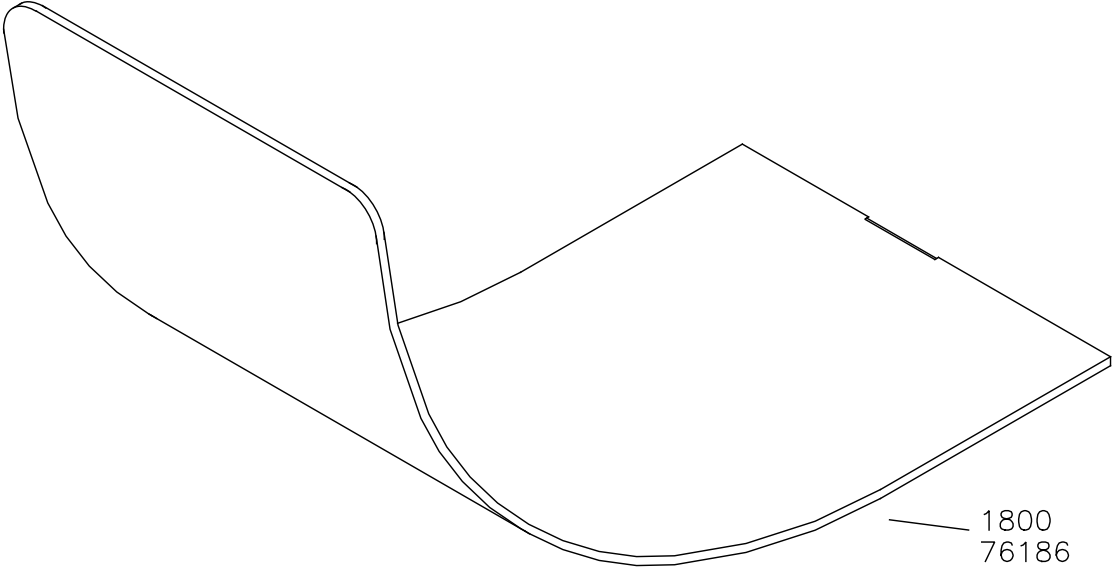


CASTING ASSEMBLY  
 SIDE FEED  
 R16S

NOTE:  
 SHANK SHOULD HAVE FREE  
 PLAY IN THE VERTICAL AXIS  
 AND SHOULD SPIN FREELY.  
 THIS FREE MOTION SERVES  
 AS A MISALIGNMENT COUPLING  
 BETWEEN PRESS RAM  
 AND PLUNGER.



# CHUTE AND GUARD R16S



NEVER OPERATE APPLICATOR WITHOUT  
SAFETY GUARD IN POSITION