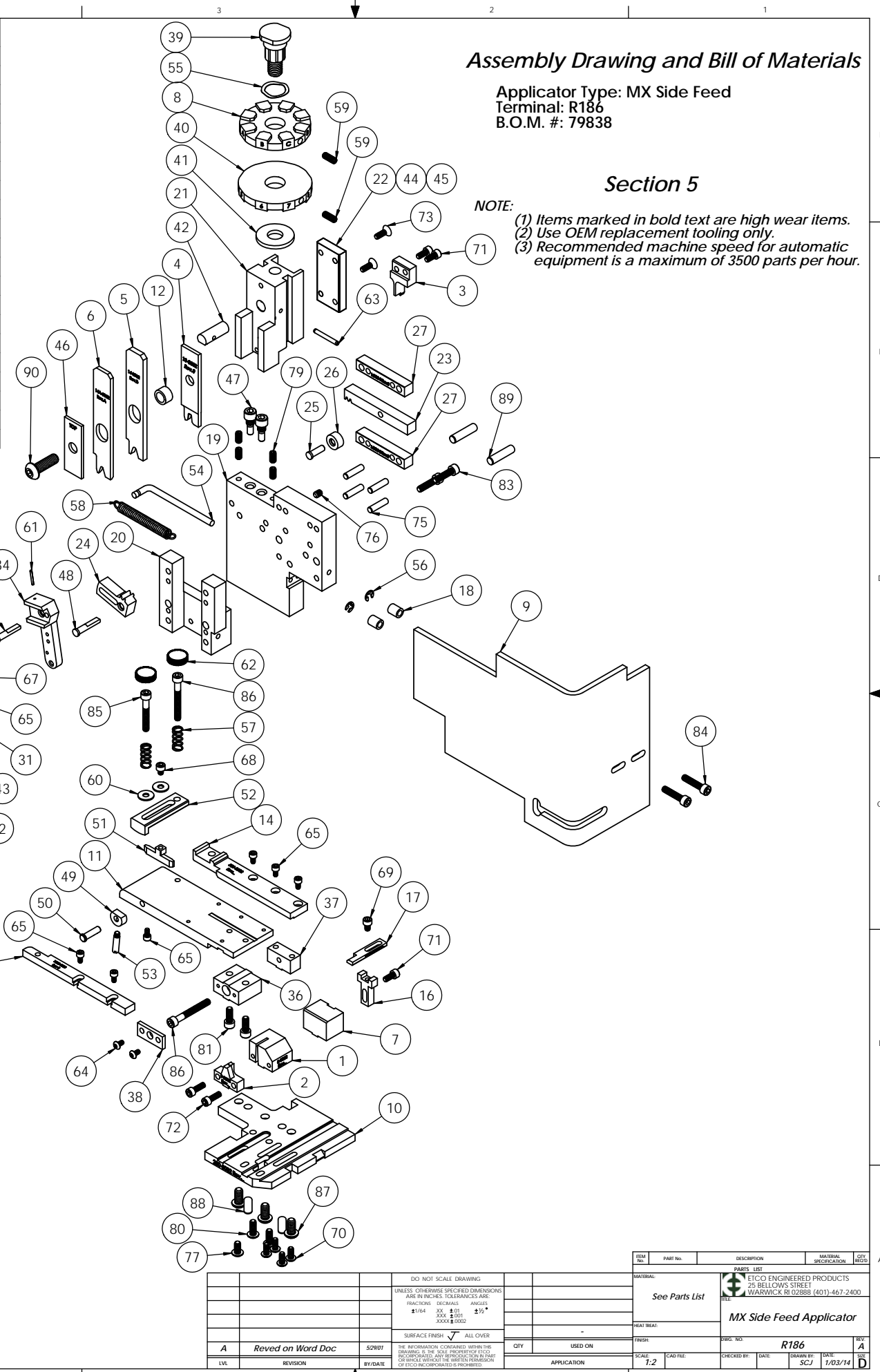


ITEM NO.	QTY.	Part_Code	PART NUMBER	DESCRIPTION	ITEM NO.	QTY.	Part_Code	PART NUMBER	DESCRIPTION
1	1	73997	8-3002	Cut-off Die	70	4	61472	8-32_.38bh	#8-32 x 3/8" Button Hd Cap Screw
2	1	73992	9-3002	Anvil	71	3	63161	8-32_.38sh	#8-32 x 3/8" Socket Hd Cap Screw
3	1	73993	12-3002	Cut-off Punch	72	2	63164	8-32_.50sh	#8-32 x 1/2" Socket Hd Cap Screw
4	1	73994	13-3002	Wire Rolling Tool	73	2	63052	8-32_.50fh	#8-32 x 1/2" Flat Hd Cap Screw
5	1	73995	14-3002	Insulation Rolling Tool	74	4	63158	3.16_.50dp	Ø3/16" x 1/2" Dowel Pin
6	1	73996	14A-3002	Insulation Container Tool	75	4	63470	3.16_.75dp	Ø3/16" x 3/4" Dowel Pin
7	1	74802	26-3000	Backup Block	76	2	63054	10-32_.25ss	#10-32 x 1/4" Socket Hd Set Screw
8	1	72280	34-3062	Wire Crimp Dial	77	1	78993	10-32_.38bh	#10-32 x 3/8" Button Hd Cap Screw
9	1	76403	199-3005	Safety Guard	78	1	70110	10-32_.38sh	#10-32 x 3/8" Socket Hd Cap Screw
10	1	78322	200-3002	Baseplate	79	4	71626	10-32_.38ss	#10-32 x 3/8" Socket Hd Set Screw
11	1	74060	250-3002	Feed Plate	80	6	76501	10-32_.50bh	#10-32 x 1/2" Button Hd Cap Screw
12	1	78320	297S-3001	IRT Spacer	81	2	63056	10-32_.50sh	#10-32 x 1/2" Socket Hd Cap Screw
13	1	75545	303-3014	Feed Finger	82	1	70293	10-32_.63sh	#10-32 x 5/8" Socket Hd Cap Screw
14	1	74059	500-3002	Rear Guide Rail	83	2	63532	10-32_.75sh	#10-32 x 3/4" Socket Hd Cap Screw
15	1	75073	1000-3006	Front Guide Rail	84	2	70925	10-32_.88sh	#10-32 x 7/8" Socket Hd Cap Screw
16	1	74803	1600B-3000	Adjustable Stripper Holder	85	1	77396	10-32_1.25sh	#10-32 x 1 1/4" Socket Hd Cap Screw
17	1	75857	1600A-3018	Adjustable Stripper Block	86	2	63826	10-32_1.50sh	#10-32 x 1 1/2" Socket Hd Cap Screw
18	2	74491	GS-375	Guard Spacer	87	3	63632	1.4-20_.50bh	1/4-20 x 1/2" Button Hd Cap Screw
19	1	71029	MX2A-S	Mounting Frame	88	2	63827	1.4_.50dp	Ø1/4" x 1/2" Dowel Pin
20	1	71030	MX2B-S	Plunger Frame	89	2	63510	1.4_1.00dp	1/4 x 1" Dowel Pin
21	1	74343	MX3	Ram	90	1	63055	5.16-18_1.00bh	5/16-18 x 1" Button Hd Cap Screw
22	1	74344	MX4-S	Cam (1 5/8" Up Stroke)					
23	1	74438	MX5-S	Cam Rack					
24	1	74346	MX6	Gear Arm					
25	1	74347	MX7	Cam Pin					
26	1	74350	MX8	Cam Roller					
27	2	74351	MX10-S	Rack Pad					
28	2	74352	MX11	Gib					
29	1	74356	MX12	Feed Finger Pivot Pin					
30	1	74360	MX13	Adjusting Bar					
31	1	74361	MX14-S	Feed Finger Arm					
32	1	74362	MX15-S	Feed Finger Guide					
33	1	74364	MX16	Retainer					
34	1	74371	MX18-S	Swing Arm					
35	1	74376	MX25	Stroke Adjustment Screw					
36	1	74384	MX29-S	Slide Support					
37	1	74388	MX30-S	Support Anchor					
38	1	74390	MX32-S	Support Cover					
39	1	74407	MX33	Mounting Post					
40	1	74409	MX35	Insulation Dial					
41	1	74411	MX36	Dial Spacer					
42	1	74412	MX44	Locating Dowel					
43	1	74415	MX45-S	Feed Finger Spring					
44	1	74416	MX47-S	Cam (1 5/8" Down stroke)					
45	1	74417	MX48-S	Cam (1 1/8" Up Stroke)					
46	1	74418	MX49	Tool Retainer					
47	3	74419	MX50	Safety Pivot Pin					
48	2	74420	MX52	Pivot Pin					
49	1	74425	MX84-S	Brake Cam					
50	1	74426	MX85-S	Cam Pivot Pin					
51	1	74428	MX86-S	Brake Shoe					
52	1	75178	MX87-S	Lift Arm					
53	1	74430	MX88-S	Lever					
54	1	74614	MX90-S	Spring Bracket					
55	1	72310	MX104	Wave Disc Spring					
56	2	75083	Irving 3100-18	External Retaining Ring					
57	2	77322	LC-045E-10-M	Spring					
58	1	74611	LE-037CD-6	Extension Spring					
59	2	70739	McMaster-Carr #3126A53	Spring Plunger					
60	2	72519	McMaster Carr #98029A043	#8 Hardened Washer					
61	1	74447	McMaster-Carr #98296A109	Expansion Pin (1/16 x 1/2")					
62	2	73785	SPI 99-602-5	#10 Black Knurled Knob					
63	1	62040	1.8_1.00rp	1/8" x 1" Roll Pin					
64	2	63792	6-32_.25bh	#6-32 x 1/4" Button Hd Cap Screw					
65	7	63207	6-32_.25sh	#6-32 x 1/4" Socket Hd Cap Screw					
66	2	63209	6-32_.38sh	#6-32 x 3/8" Socket Hd Cap Screw					
67	1	63210	8fw	#8 Flatwasher					
68	1	60265	8-32_.19sh	#8-32 x 3/16" Socket Hd Cap Screw					
69	1	63163	8-32_.25sh	#8-32 x 1/4" Socket Hd Cap Screw					

NOTE: ITEMS MARKED IN BOLD TEXT ARE HIGH WEAR ITEMS



Assembly Drawing and Bill of Materials

Applicator Type: MX Side Feed
Terminal: R186
B.O.M. #: 79838

Section 5

NOTE:
(1) Items marked in bold text are high wear items.
(2) Use OEM replacement tooling only.
(3) Recommended machine speed for automatic equipment is a maximum of 3500 parts per hour.

ITEM NO.	PART NO.	DESCRIPTION	MATERIAL SPECIFICATION	QTY.	REVISION
1	73997	8-3002		1	

DO NOT SCALE DRAWING		UNLESS OTHERWISE SPECIFIED DIMENSIONS ARE IN INCHES. DECIMALS ARE FRACTIONS. DIMENSIONS ANGLES	
1/164	XX	1/16	1/2
XXX	XXX	XXX	XXX
SURFACE FINISH: ✓ ALL OVER		FINISH: USED ON	
A	Reved on Word Doc	5/29/07	DATE: 1/03/14
LVL	REVISION	BY/DATE	APPLICATION