



**REFERENCelist:**  
**UB2-FC**  
**ECC APPLICATOR**  
**BILL OF MATERIAL NUMBER**  
**79844**  
**REV A**

**WARNING !**  
**NEVER OPERATE**  
**THIS OR ANY APPLICATOR**  
**WITHOUT SAFETY GUARD**  
**IN POSITION.**

PART CODE	PART NUMBER	QUANTITY	DESCRIPTION
70079	7A-UB3R	(1)	FEED FINGER
75633	11-108-FS	(1)	PLUNGER
75713	11B1	(1)	CAM ROLLER BRACKET
74668	26-149	(1)	SCRAP RETAINNER
74315	101-35A-UB	(1)	TOP CASTING
76969	169	(1)	UNIVERSAL GIB
76543	169-20	(1)	LEFT GIB
76542	179-49	(1)	GUARD
76612	179-50	(1)	GUARD
73935	202	(1)	BASE PLATE
74152	250-194	(1)	DIE PLATE
74153	250-195	(1)	DIE PLATE (REAR)
76873	301-4	(1)	SHOULDER SCREW
77603	302-050	(1)	FRONT SPACER
76822	304-450	(1)	REAR SPACER
76829	305-1	(1)	FEED FINGER ARM
74396	306	(1)	FEED FINGER STOP
76721	307-7	(1)	SPRING
74400	308	(1)	FEED SHAFT
74402	310	(1)	CLOCK SPRING
73706	311-1	(1)	ROLL PIN
77106	312-1	(1)	CAM TAPER PIN
74422	314-L-9A	(1)	CAM BODY
74495	401	(1)	BRAKE SHAFT
74496	402	(1)	BRAKE SPRING RETAINER
74639	403-137	(1)	BRAKE BODY
74673	404	(1)	BRAKE CAM
74674	405	(1)	TAPER PIN
74675	406	(1)	COTTER PIN
74676	407	(2)	SPRING
70029	408-730	(1)	BRAKE SPACER
74835	500-146	(1)	RIGHT GUIDE
75242	1000-41	(1)	LEFT GUIDE
77918	1102-FS	(1)	FLOATING SHANK
75719	1142	(1)	CAM ROLLER BEARING
75907	1600-139	(1)	STRIPPER

**NOTE: ITEMS MARKED WITH AN \***  
**ARE HIGH WEAR ITEMS**



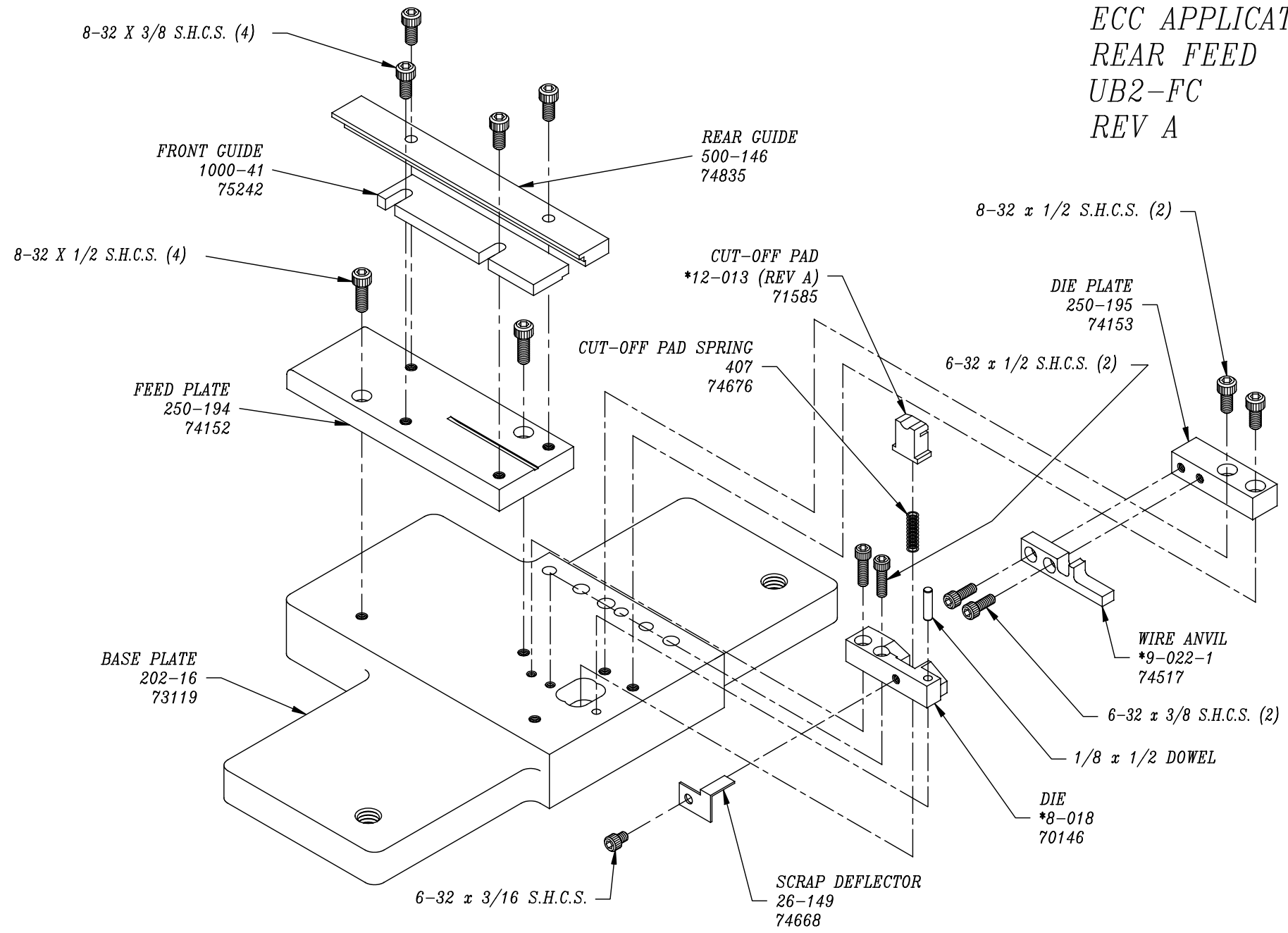
**REFERENCelist:**  
**UB2-FC**  
**ECC APPLICATOR**  
**BILL OF MATERIAL NUMBER**  
**79844**  
**REV A**

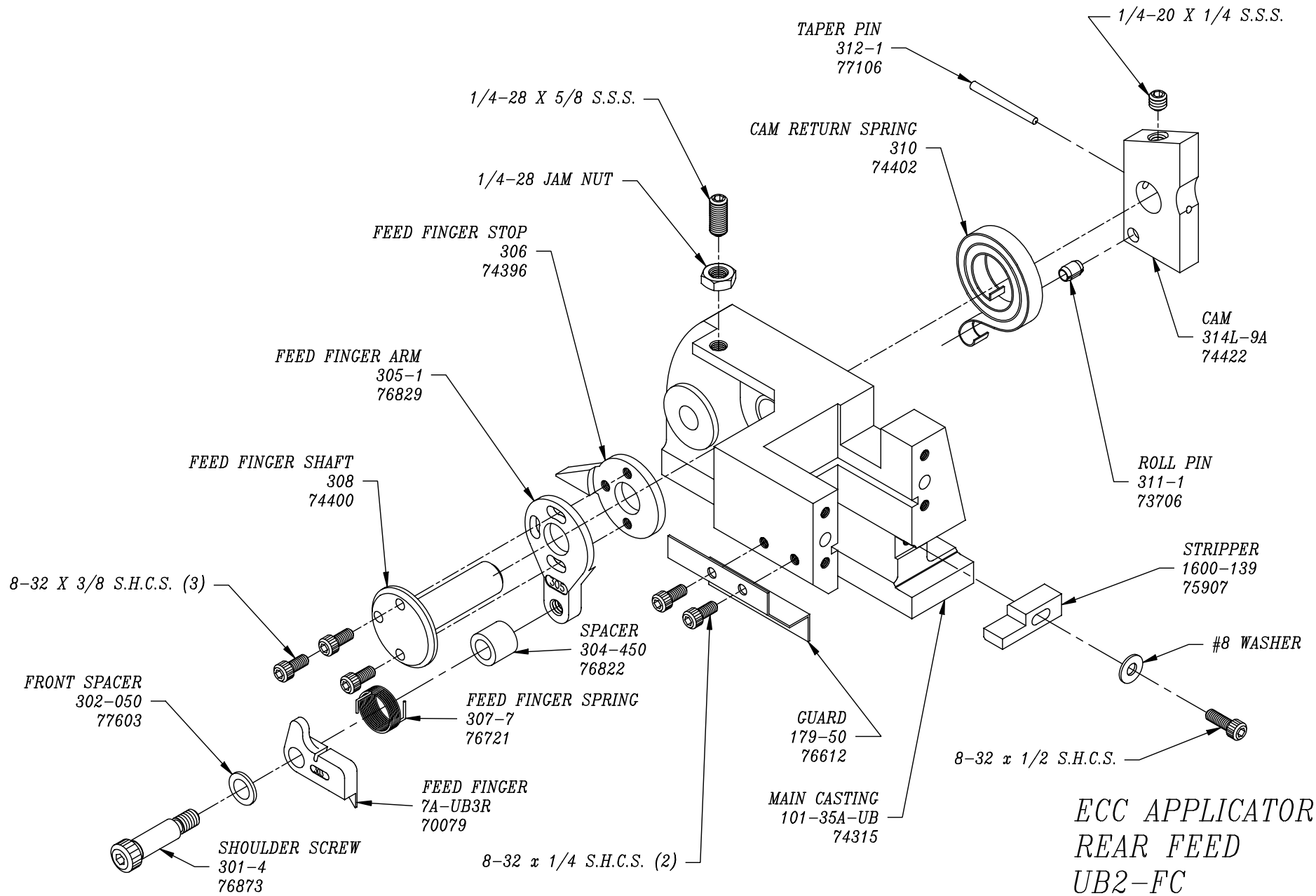
**WARNING !**  
**NEVER OPERATE**  
**THIS OR ANY APPLICATOR**  
**WITHOUT SAFETY GUARD**  
**IN POSITION.**

PART CODE	PART NUMBER	QUANTITY	DESCRIPTION
78010	TR-UB3R	(1)	TOOL RETAINER
70146	*8-018	(1)	DIE CUT-OFF RETAINER
74517	*9-022-1	(1)	ANVIL (FOR .120 CRIMP WIDTH)
71585	*12-013	(1)	CUT-OFF PUNCH PAD
74516	*13-014-2	(1)	WIRE ROLLING TOOL .120 CRIMP WIDTH
73230	15-005	(1)	CUT-OFF PUNCH DRIVER
		(1)	6-32 X .200 S.H.C.S. (ALT.)
		(1)	10-32 X 1 1/2" S.H.C.S.
		(1)	1/4-28 X 1/2" S.H.C.S.
		(2)	1/8 X 1" DOWEL
		(1)	5/16 X 3/4" SHOULDER SCREW
		(1)	1/4-28 X 3/4" S.S.S.
		(2)	1/4-20 X 1" S.H.C.S.
		(2)	1/4 X 1" DOWEL
		(1)	1/4-28 JAM NUT
		(2)	1/4-20 X 1/4" S.S.S.
		(9)	8-32 X 3/8" S.H.C.S.
		(1)	#8 FLAT WASHER
		(1)	8-32 X 3/4" S.H.C.S.
		(2)	6-32 X 3/8" S.H.C.S.
		(8)	8-32 X 1/2" S.H.C.S.
		(2)	1/8 X 1/2" DOWEL
		(2)	6-32 X 1/2" S.H.C.S.
		(1)	10-32 X 1" S.H.C.S.
		(1)	8-32 X 1/2" S.H.C.S.

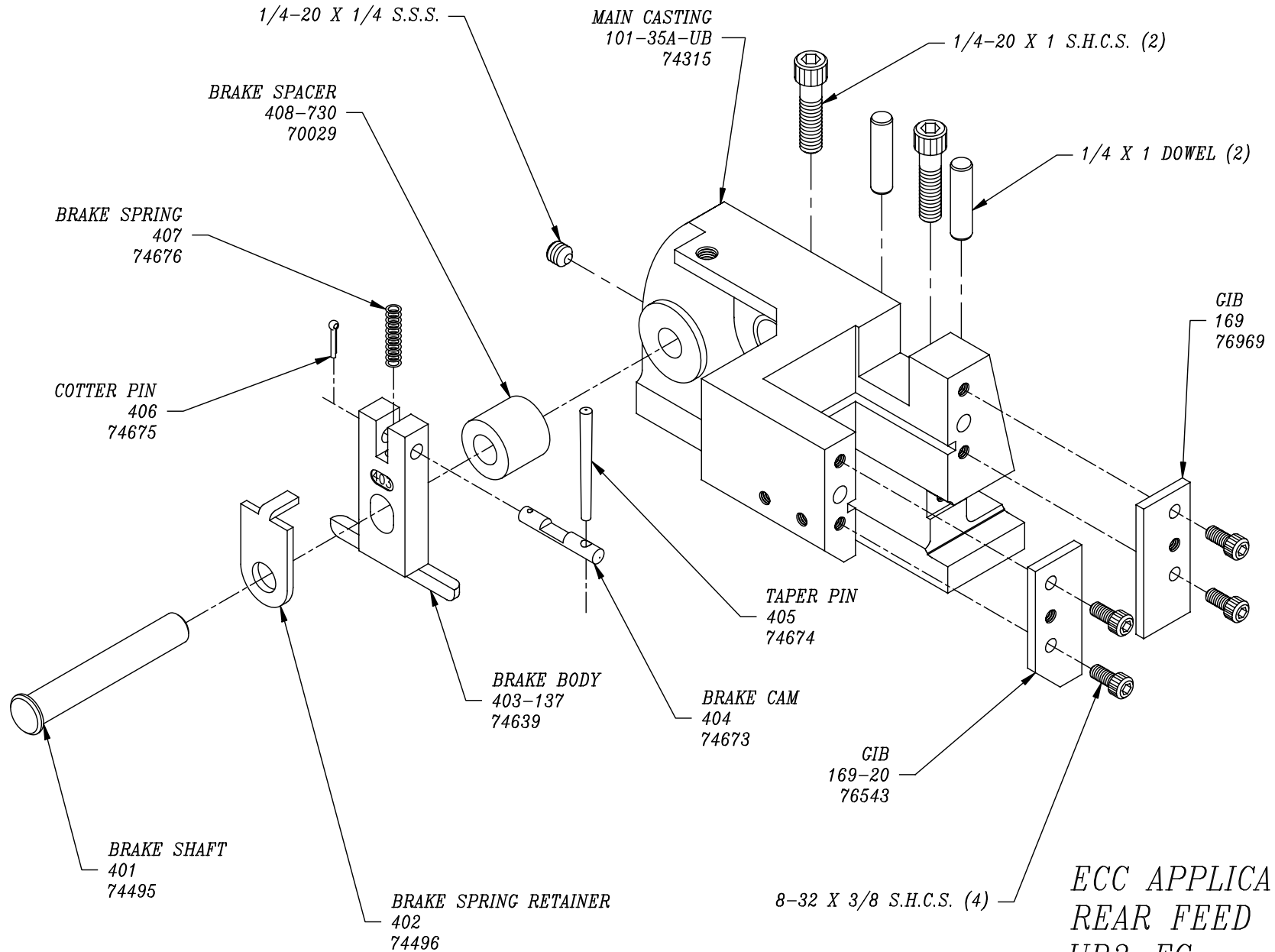
**NOTE: ITEMS MARKED WITH AN \***  
**ARE HIGH WEAR ITEMS**

*ECC APPLICATOR  
REAR FEED  
UB2-FC  
REV A*

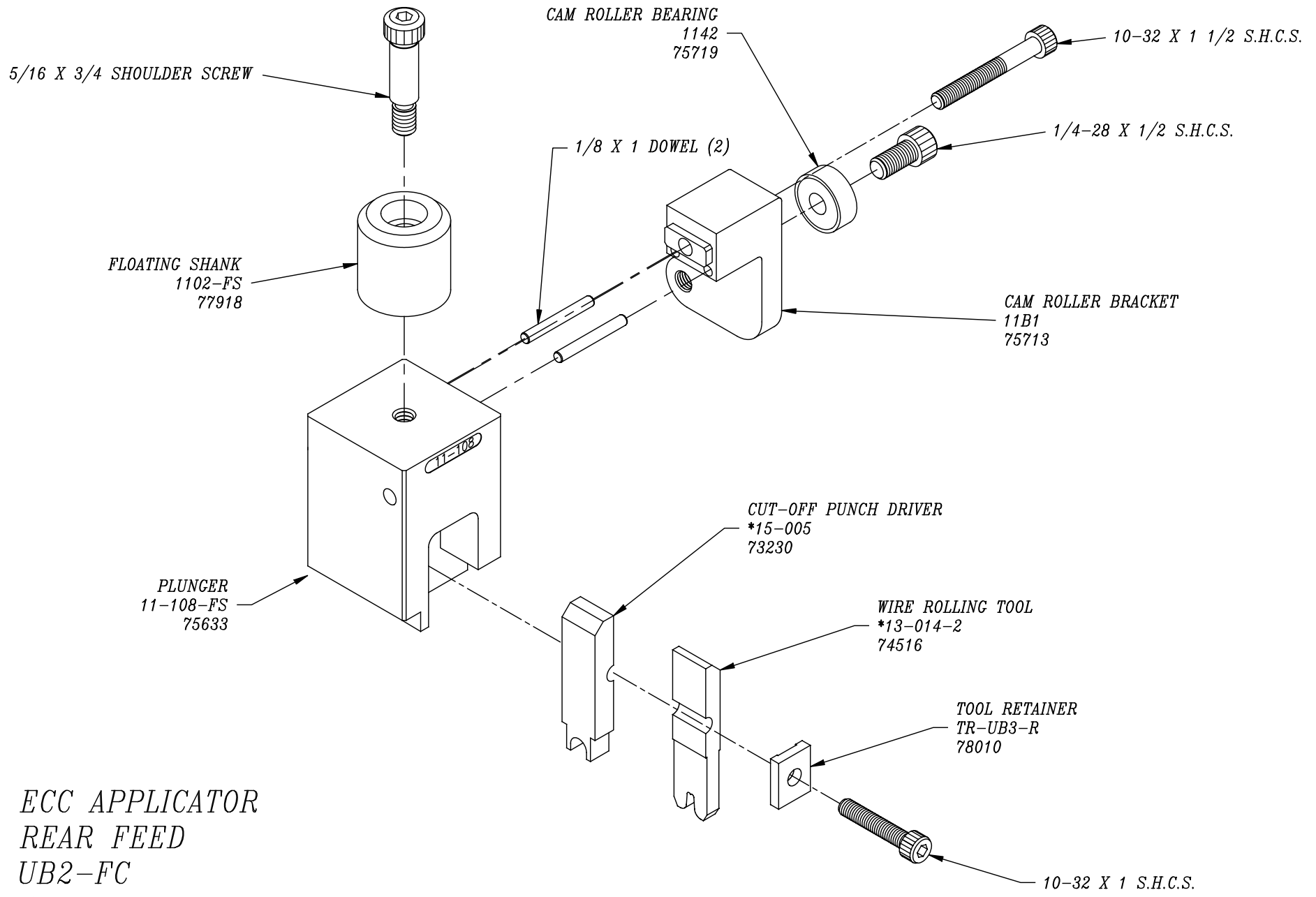




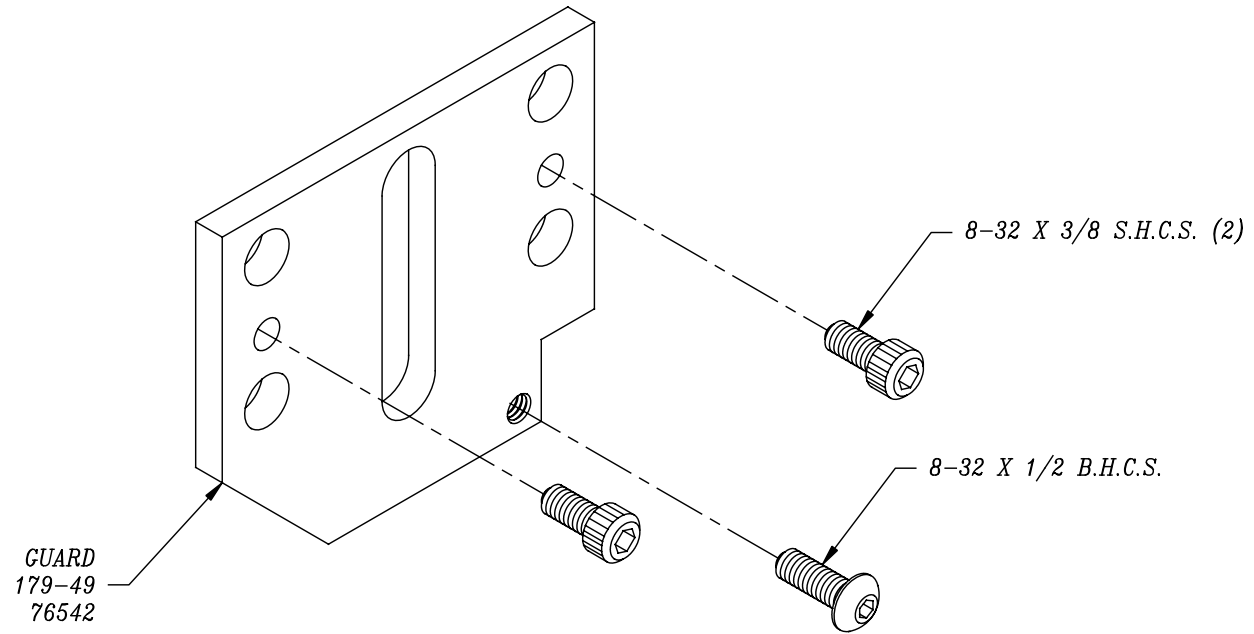
ECC APPLICATOR  
 REAR FEED  
 UB2-FC  
 REV A



ECC APPLICATOR  
 REAR FEED  
 UB2-FC  
 REV A



ECC APPLICATOR  
REAR FEED  
UB2-FC  
REV A



*ECC APPLICATOR  
REAR FEED  
UB2-FC  
REV A*