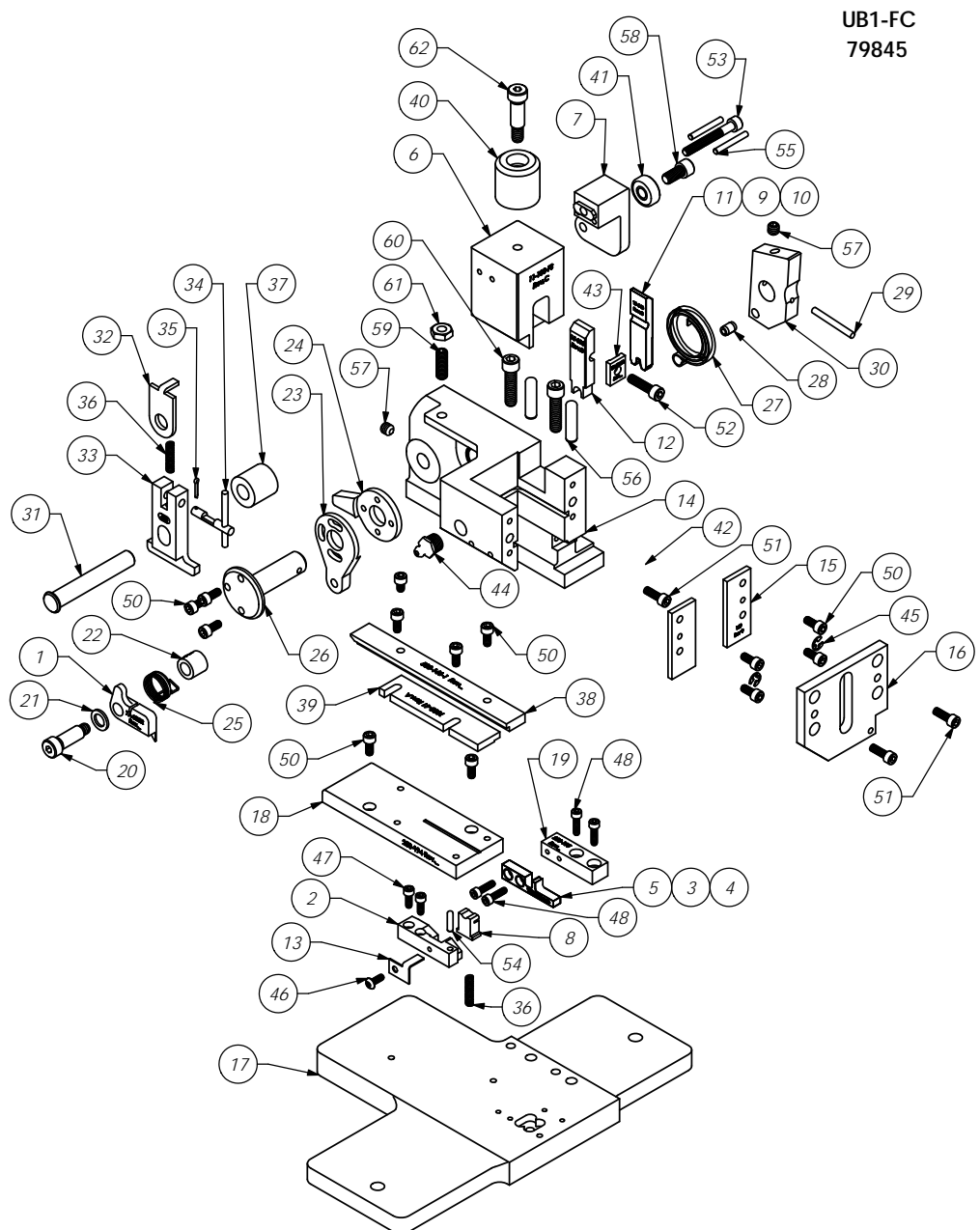


ITEM NO.	Part Code	PART NUMBER	DESCRIPTION	QTY.
1	70079	7A-UB3R	Feed Finger	1
2	70146	8-018	Cut-off Die	1
3	70912	9-022	Anvil	1
4	74791	9-022-2	Anvil	1
5	78081	9-279	Anvil	1
6	75633	11-108-FS	Plunger	1
7	75713	11B-1	Cam Roller Bracket	1
8	71585	12-013	Cut-off Punch	1
9	72354	13-014	Wire rolling tool	1
10	64061	13-014-4	Wire rolling tool	1
11	78082	13-548	Wire Rolling Tool	1
12	73230	15-005	Cut-off punch driver	1
13	74668	26-149	Scrap Retainer	1
14	74315	101-35A-UB	Main Casting	1
15	69859	169	Gib	2
16	76542	179-49	Guard	1
17	73119	202-16	Base Plate	1
18	74152	250-194	Die Plate	1
19	74153	250-195	Rear Die Plate	1
20	76873	301-4	Shoulder Screw	1
21	77603	302-.050	Front Spacer	1
22	76822	304-.450	Feed Finger Spacer	1
23	76829	305-1	Feed Finger Arm	1
24	74396	306	Feed Stop Arm	1
25	76721	307-7	Feed Finger Spring	1
26	74400	308-Finished	Feed Shaft	1
27	74402	310	Cam Return Spring	1
28	73706	311-1	Spring Pin	1
29	77106	312-1	Cam Taper Pin	1
30	63654	314L-9A-CP	Cam Body	1
31	74495	401-Finished	Brake Shaft	1
32	74496	402	Spring Retainer	1
33	74639	403-137	Brake Body	1
34	74673	404_405as	Brake Cam Assy	1
35	74675	406	Cotter Pin	1
36	74676	407	Brake Spring	2
37	70029	408-.730	Brake Spacer	1
38	64103	500-146-1	Rear / Right Guide	1
39	75242	1000-41	Front / Left Guide	1
40	77918	1102-FS	Floating Shank	1
41	75719	1142	Cam Roller Bearing	1
42	75907	1600-139	Stripper	1
43	78010	TR-UB3R	Tool Retainer	1
44	63506	McMaster-Carr #1095K11	1/8 NPT Grease Fitting	1
45	72069	McMaster Carr #98407A118	#8 E-Style Retaining Ring	2
46	69494	6-32_.38bh	#6-32 x 3/8" Button Hd Cap Screw	1
47	63209	6-32_.38sh	#6-32 x 3/8" Socket Hd Cap Screw	2
48	63544	6-32_.50sh	#6-32 x 1/2" Socket Hd Cap Screw	4
49	63163	8-32_.25sh	#8-32 x 1/4" Socket Hd Cap Screw	1
50	63161	8-32_.38sh	#8-32 x 3/8" Socket Hd Cap Screw	12
51	63164	8-32_.50sh	#8-32 x 1/2" Socket Hd Cap Screw	3
52	63532	10-32_.75sh	#10-32 x 3/4" Socket Hd Cap Screw	1
53	63826	10-32_1.50sh	#10-32 x 1 1/2" Socket Hd Cap Screw	1
54	63507	1.8_.50dp	Ø 1/8" x 1/2" Dowel	1
55	62849	1.8_1.00dp	1/8" x 1" Dowel	2
56	63510	1.4_1.00dp	1/4 x 1" Dowel Pin	2
57	63511	1.4-20_.25ssf	1/4-20 x 1/4" Socket Hd Set Screw	2
58	62184	1.4-28_.50sh	1/4-28 x 1/2" Socket Hd Cap Screw	1
59	63513	1.4-28_.75ss	1/4-28 x 3/4" Socket Set Screw	1
60	63168	1.4-20_1.00sh	1/4-20 x 1" Socket Hd Cap Screw	2
61	63512	1.4-28jn	1/4-28 Jam Nut	1
62	78918	5.16_.75shss	5/16 x 3/4" Shoulder Screw	1



**UB1-FC  
79845**

ITEM NO.	PART No.	DESCRIPTION	MATERIAL SPECIFICATION	QTY.	RECD.
		DO NOT SCALE DRAWING			
		UNLESS OTHERWISE SPECIFIED DIMENSIONS ARE IN INCHES TOLERANCES ARE:			
		FRACTIONS DECIMALS ANGLES			
		±1/64 ±.01 ±1/2°			
		±.001 ±.005 ±1/4°			
		±.0001 ±.0005 ±1/8°			
		THE INFORMATION CONTAINED WITHIN THIS DRAWING IS THE SOLE PROPERTY OF ECCO. REPRODUCTION OR TRANSMISSION IN ANY FORM OR BY ANY MEANS WITHOUT THE WRITTEN PERMISSION OF ECCO IS PROHIBITED.			
B		ECR# 2652 SCJ	112012	SURFACE FINISH: √ ALL OVER	
A		ECR# 2633 SCJ	111312	UB1-FC	
LVL		REVISION	BY/DATE	CITY	USED ON
				SCALE	1:2
				CAD FILE	CHECKED BY: DATE: DRAWN BY: DATE:
				APPLICATION	

**ECCO ENGINEERED PRODUCTS**  
25 BELLOWS STREET  
WARMICK RI 02888 (401)-467-2400

**ECCO Rear Feed Applicator**