



**REFERENCE LIST:
R24E & R28E "F-CRIMP"
ECC APPLICATOR
BILL OF MATERIAL NUMBER
79861**

**WARNING !
NEVER OPERATE
THIS OR ANY
APPLICATOR
WITHOUT SAFETY
GUARD IN POSITION.**

PART CODE	PART NUMBER	QUANTITY	DESCRIPTION
75631	11-106-FS	(1)	PLUNGER
77918	1102-FS	(1)	FLOATING SHANK
75728	1155	(1)	ADJUSTING BLOCK SCREW
75724	1150	(1)	INSULATION BLOCK
71584	*12-011	(1)	CUT-OFF PUNCH
73810	17-270	(1)	SPACER
77950	*13-534	(1)	WIRE ROLLING TOOL
		N/A	TOOL RETAINER
72990	*14-012	(1)	INSULATION ROLLING TOOL ("F-CRIMP")
75713	11B1	(1)	CAM ROLLER BRACKET
75719	1142	(1)	CAM ROLLER BEARING
74421	314-9	(1)	CAM BODY
77106	312-1	(1)	CAM TAPER PIN
74402	310	(1)	CLOCK SPRING
73706	311-1	(1)	ROLL PIN
76969	169	(2)	UNIVERSAL GIBS
		N/A	GIB
73966	1600-278	(1)	WIRE STRIPPER
73903	101-35	(1)	TOP CASTING
73216	408-720	(1)	BRAKE BUSHING
74676	407	(1)	SPRING
74675	406	(1)	COTTER PIN
74674	405	(1)	BRAKE TAPER PIN
74673	404	(1)	BRAKE CAM
74535	403-35	(1)	BRAKE BODY
74496	402	(1)	BRAKE SPRING RETAINER
74495	401	(1)	BRAKE SHAFT
74396	306	(1)	FEED FINGER STOP
74393	305	(1)	FEED FINGER ARM
73214	304-340	(1)	REAR SPACER
74400	308	(1)	FEED SHAFT
76788	307-5	(1)	SPRING
74334	303-9	(1)	FEED FINGER
73399	302-160	(1)	FRONT SPACER
76873	301-4	(1)	SHOULDER SCREW
73808	10R-R22E	(1)	RIGHT GUIDE

**NOTE: ITEMS MARKED WITH AN *
ARE HIGH WEAR ITEMS**



REFERENCE LIST:
R24E & R28E "F-CRIMP"
ECC APPLICATOR
BILL OF MATERIAL NUMBER
79861

WARNING !
NEVER OPERATE
THIS OR ANY
APPLICATOR
WITHOUT SAFETY
GUARD IN POSITION.

PART CODE	PART NUMBER	QUANTITY	DESCRIPTION
73809	10L-R22E	(1)	LEFT GUIDE
74150	250-192	(1)	DIE PLATE
73935	202	(1)	BASE PLATE
70187	*8-068	(1)	DIE
70144	*8-016	(1)	DIE
70906	*9-016	(1)	INSULATION ANVIL
		N/A	SPRING
70907	*9-017	(1)	WIRE ANVIL
		N/A	GUARD SPACER
73967	179-23	(1)	GUARD
		(1)	10-32 X 1 1/4" S.H.C.S.
		(1)	1/4-28 X 1/2" S.H.C.S.
		(2)	1/8 X 1" DOWEL
		(1)	5/16 X 3/4" SHOULDER SCREW
		(1)	1/4-28 X 5/8" S.S.S.
		(2)	1/4-20 X 1" S.H.C.S.
		(2)	1/4 X 1" DOWEL
		(1)	1/4-28 JAM NUT
		(2)	1/4-20 X 1/4" S.S.S.
		(15)	8-32 X 3/8" S.H.C.S.
		N/A	#8 FLAT WASHER
		(2)	8-32 X 1" S.H.C.S.
		(2)	8-32 X 1/2" S.H.C.S.
		(1)	10-32 X 1" S.H.C.S.

NOTE: ITEMS MARKED WITH AN *
ARE HIGH WEAR ITEMS



**REFERENCE LIST:
R24E & R28E "F-CRIMP"
ECC APPLICATOR
BILL OF MATERIAL NUMBER
79861**

**WARNING !
NEVER OPERATE
THIS OR ANY
APPLICATOR
WITHOUT SAFETY
GUARD IN POSITION.**

PART CODE	PART NUMBER	QUANTITY	DESCRIPTION

**NOTE: ITEMS MARKED WITH AN *
ARE HIGH WEAR ITEMS**

10L-R22E
73809

8-32 X 3/8"
SHCS

250-192
74150

202
73935

8-32 X 1/2"
SHCS

1600-278
73966

10R-R22E
73808

BASE PLATE ASSEMBLY
R22E, R24E, R26E, R28E
REAR FEED

*8-068
70187

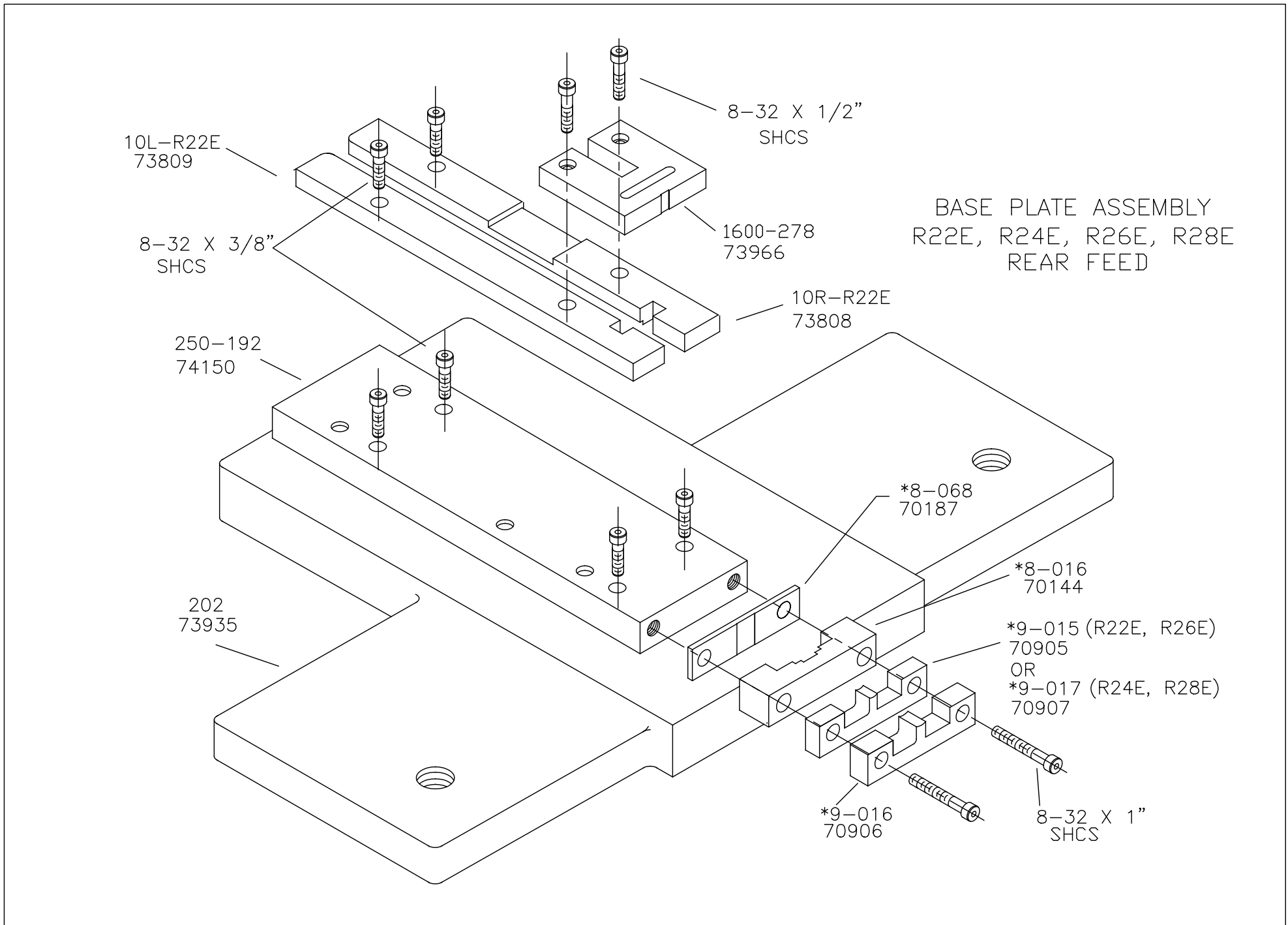
*8-016
70144

*9-015 (R22E, R26E)
70905

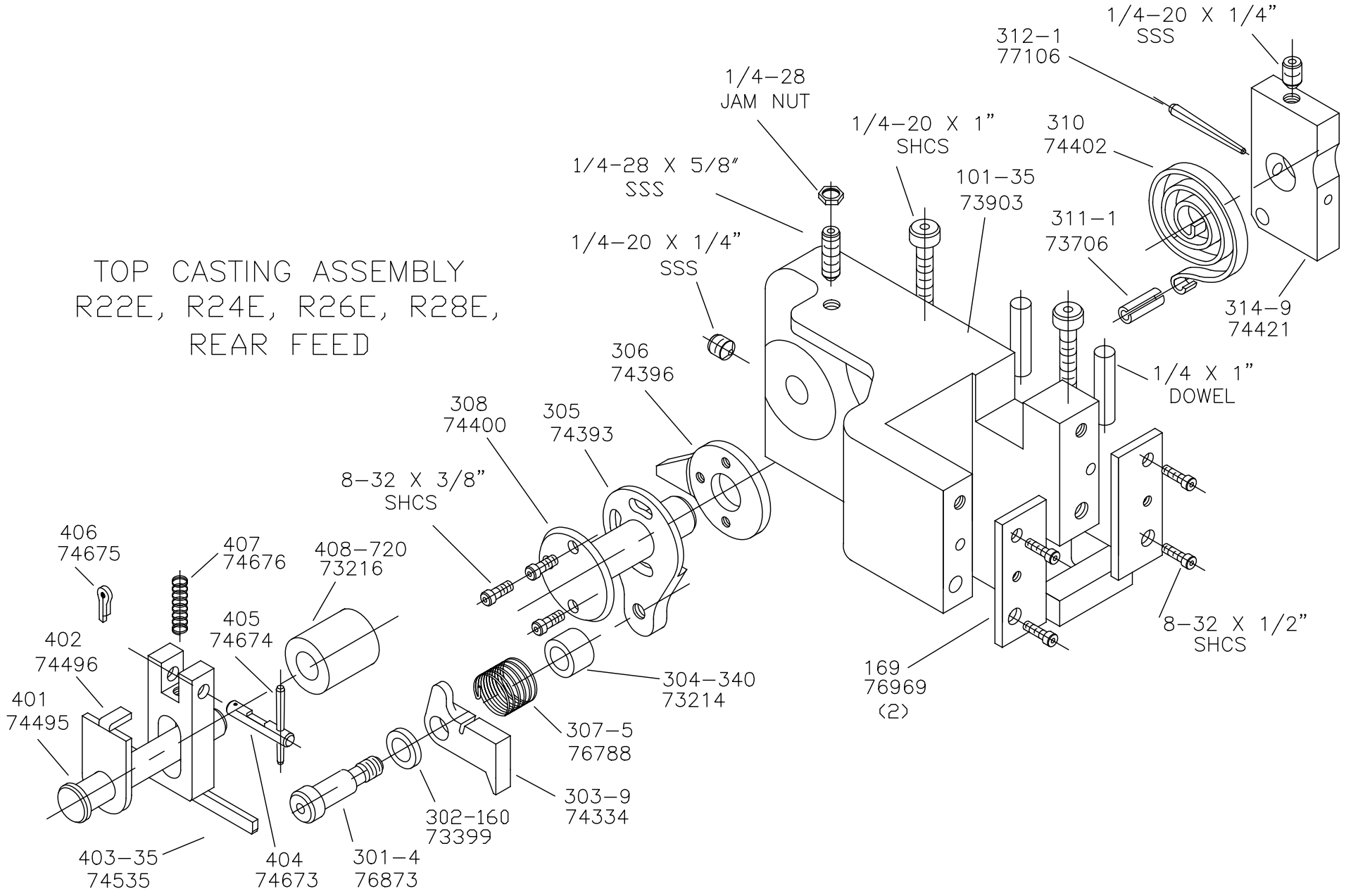
OR
*9-017 (R24E, R28E)
70907

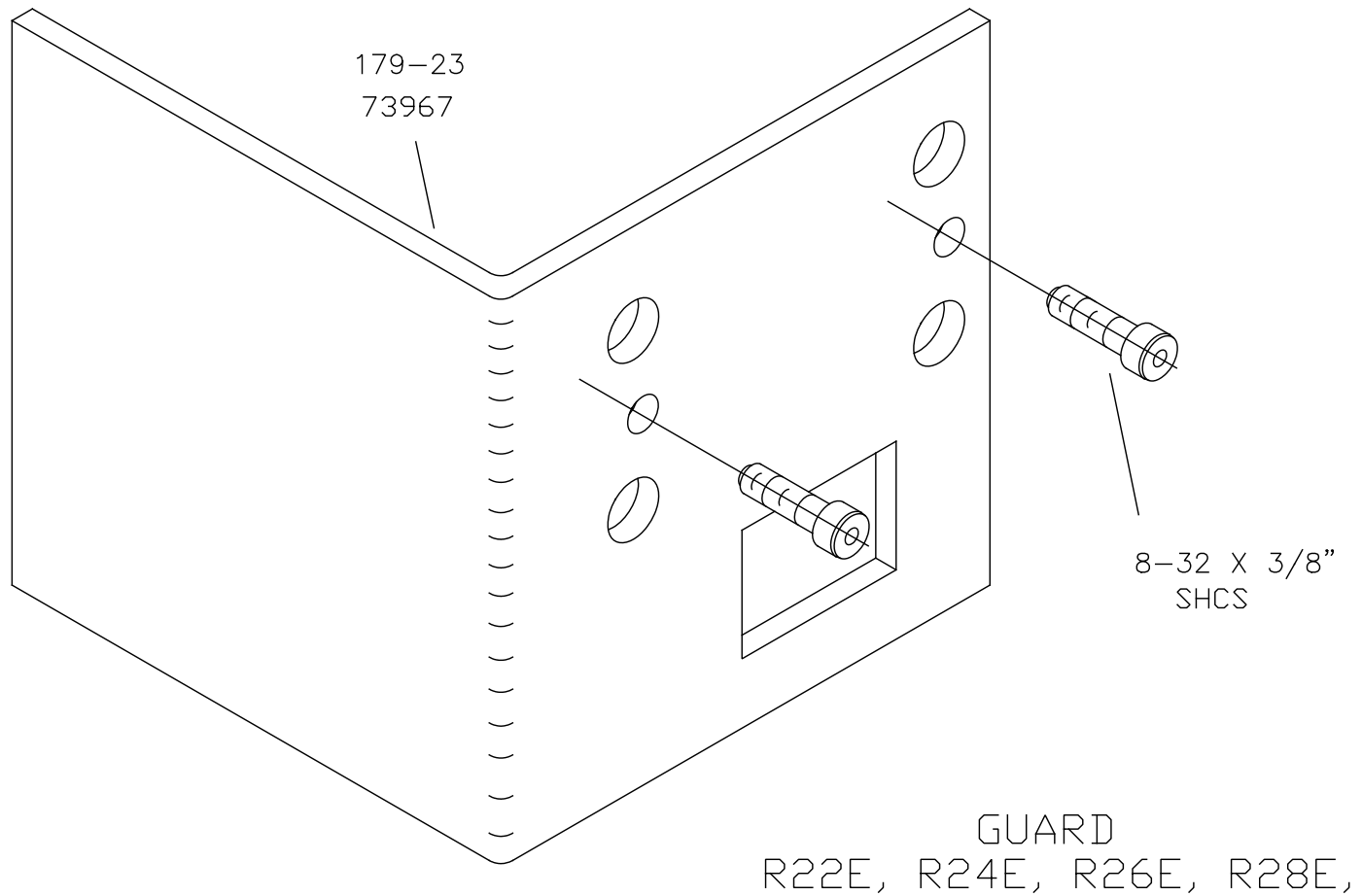
*9-016
70906

8-32 X 1"
SHCS

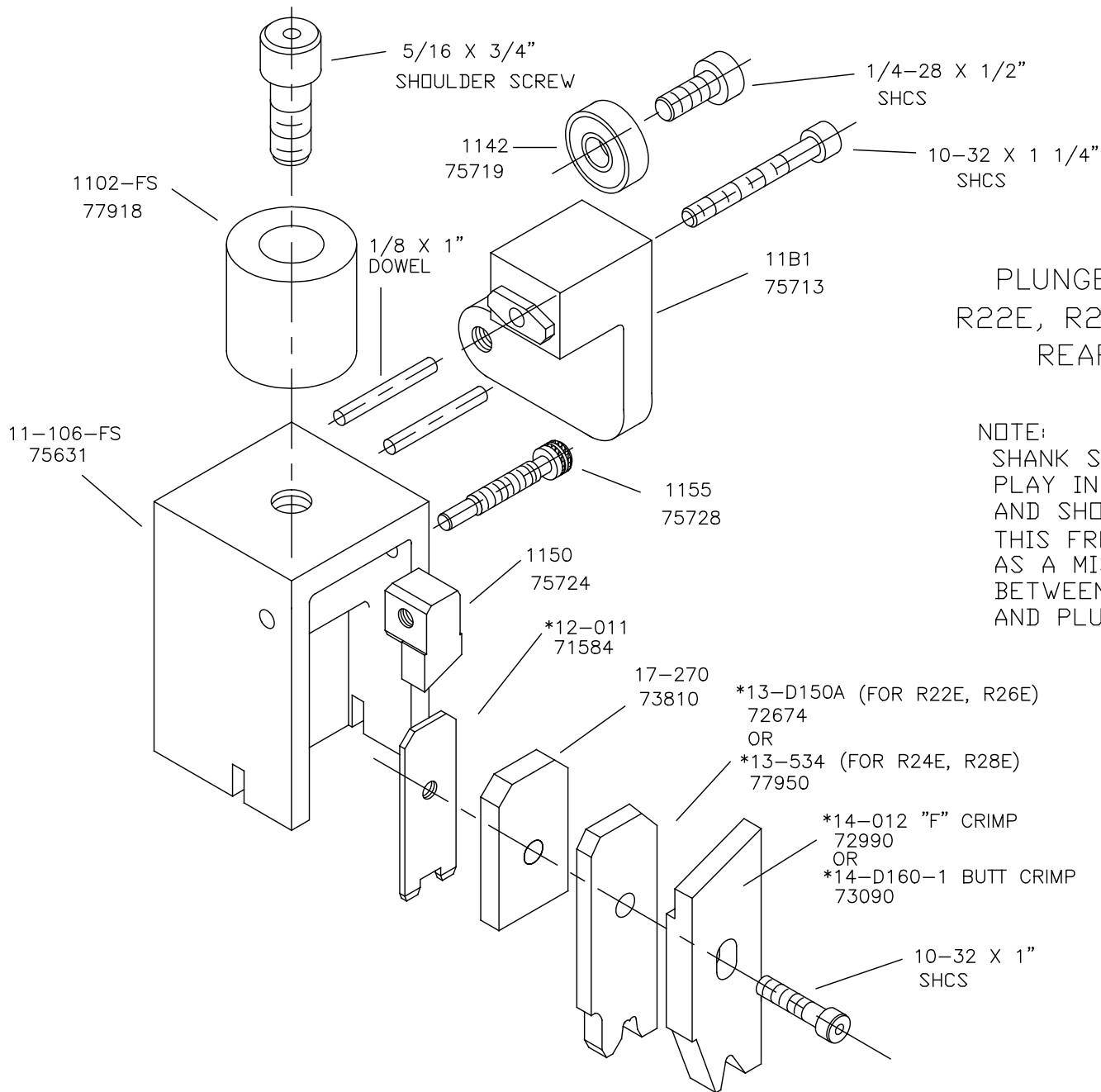


TOP CASTING ASSEMBLY
R22E, R24E, R26E, R28E,
REAR FEED





NEVER OPERATE APPLICATOR WITHOUT
SAFETY GUARD IN POSITION.



PLUNGER ASSEMBLY
R22E, R24E, R26E, R28E
REAR FEED

NOTE:
SHANK SHOULD HAVE FREE
PLAY IN THE VERTICAL AXIS
AND SHOULD SPIN FREELY.
THIS FREE MOTION SERVES
AS A MISALIGNMENT COUPLING
BETWEEN PRESS RAM
AND PLUNGER.