



REFERENCE LIST:  
M52, M52L  
ECC APPLICATOR  
SIDE FEED  
BILL OF MATERIAL NUMBER  
79869

**WARNING !**  
**NEVER OPERATE**  
**THIS OR ANY**  
**APPLICATOR**  
**WITHOUT SAFETY**  
**GUARD IN POSITION.**

PART CODE	PART NUMBER	QUANTITY	DESCRIPTION
75496	1101-FS	(1)	PLUNGER
77918	1102-FS	(1)	FLOATING SHANK
75729	1156	(1)	CUT-OFF SCREW
75728	1155	(1)	ADJUST SCREW
75724	1150	(1)	INSULATION BLOCK
75710	1125	(1)	CAM ROLLER BRACKET
75719	1142	(1)	CAM ROLLER BEARING
71794	*12-M62L	(1)	CUT-OFF PUNCH
72602	*13-D60	(1)	WIRE ROLLING TOOL
		N/A	INSULATION ROLLING TOOL
74410	314-2	(1)	CAM
74403	311	(1)	SPRING PIN
74404	312	(1)	CAM TAPER PIN
74402	310	(1)	CAM RETURN SPRING
73899	101	(1)	TOP CASTING
76969	169	(2)	UNIVERSAL GIBS
		N/A	GIB
74675	406	(1)	COTTER PIN
74676	407	(1)	BRAKE SPRING
76744	408-925	(1)	BRAKE BUSHING
74674	405	(1)	TAPER PIN
74673	404	(1)	BRAKE CAM
73980	403-30	(1)	BRAKE BODY
74496	402	(1)	SPRING RETAINER
74495	401	(1)	BRAKE SHAFT
74396	306	(1)	FEED FINGER STOP
74393	305	(1)	FEED FINGER ARM
77269	304-295	(1)	REAR SPACER
74400	308	(1)	FEED SHAFT
76859	307-6	(1)	SPRING
73979	7A-M62L	(1)	FEED FINGER
		N/A	FRONT SPACER
76858	301-3	(1)	SHOULDER SCREW
73952	231	(2)	STRIPPER SPRING
73982	1600-128	(1)	STRIPPER / STOP
73955	235	(1)	GUIDE SPACER BLOCK
73981	617	(1)	REAR / RIGHT GUIDE

**NOTE: ITEMS MARKED WITH AN \*  
ARE HIGH WEAR ITEMS**



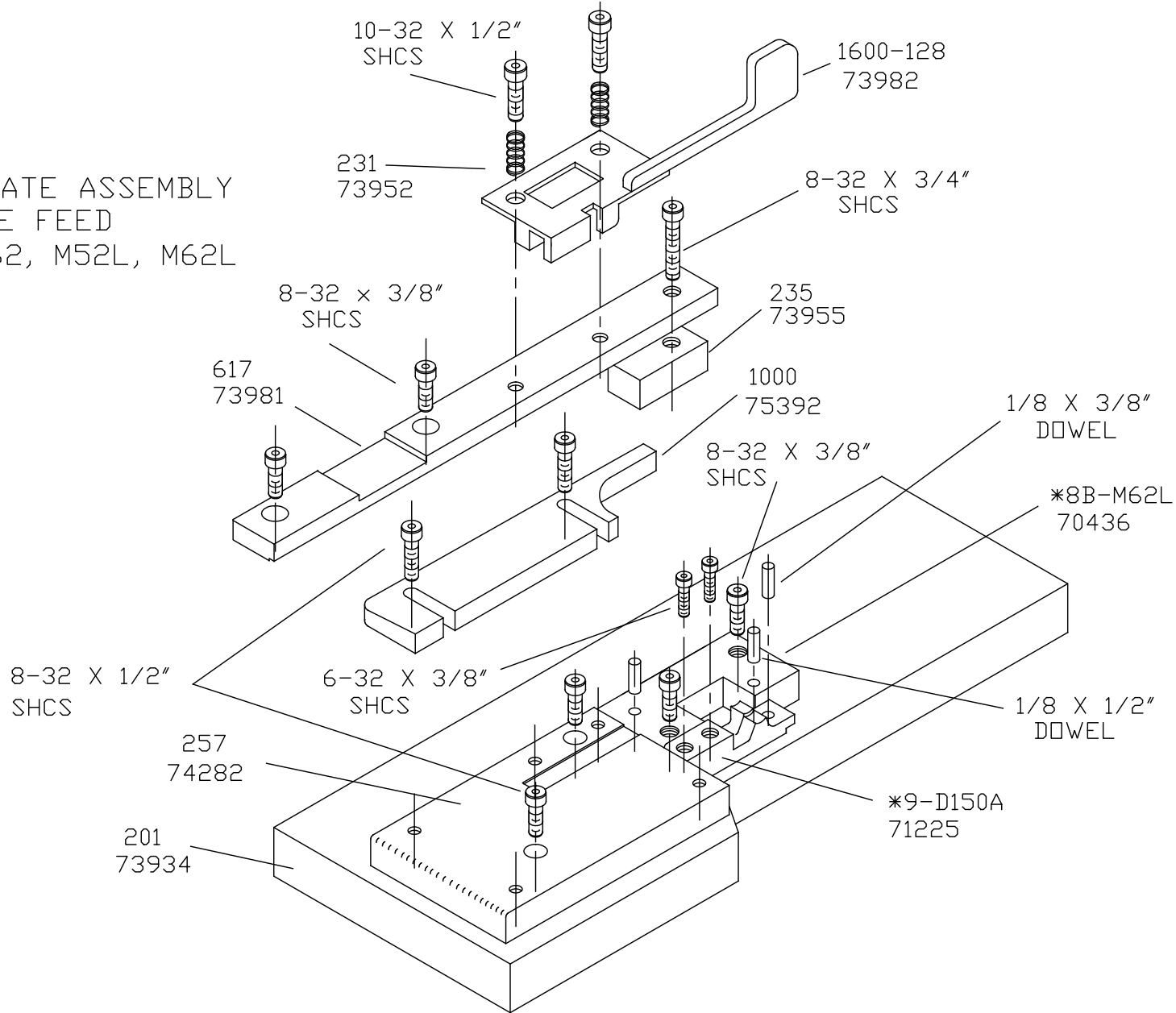
**REFERENCE LIST:  
M52, M52L  
ECC APPLICATOR  
SIDE FEED  
BILL OF MATERIAL NUMBER  
79869**

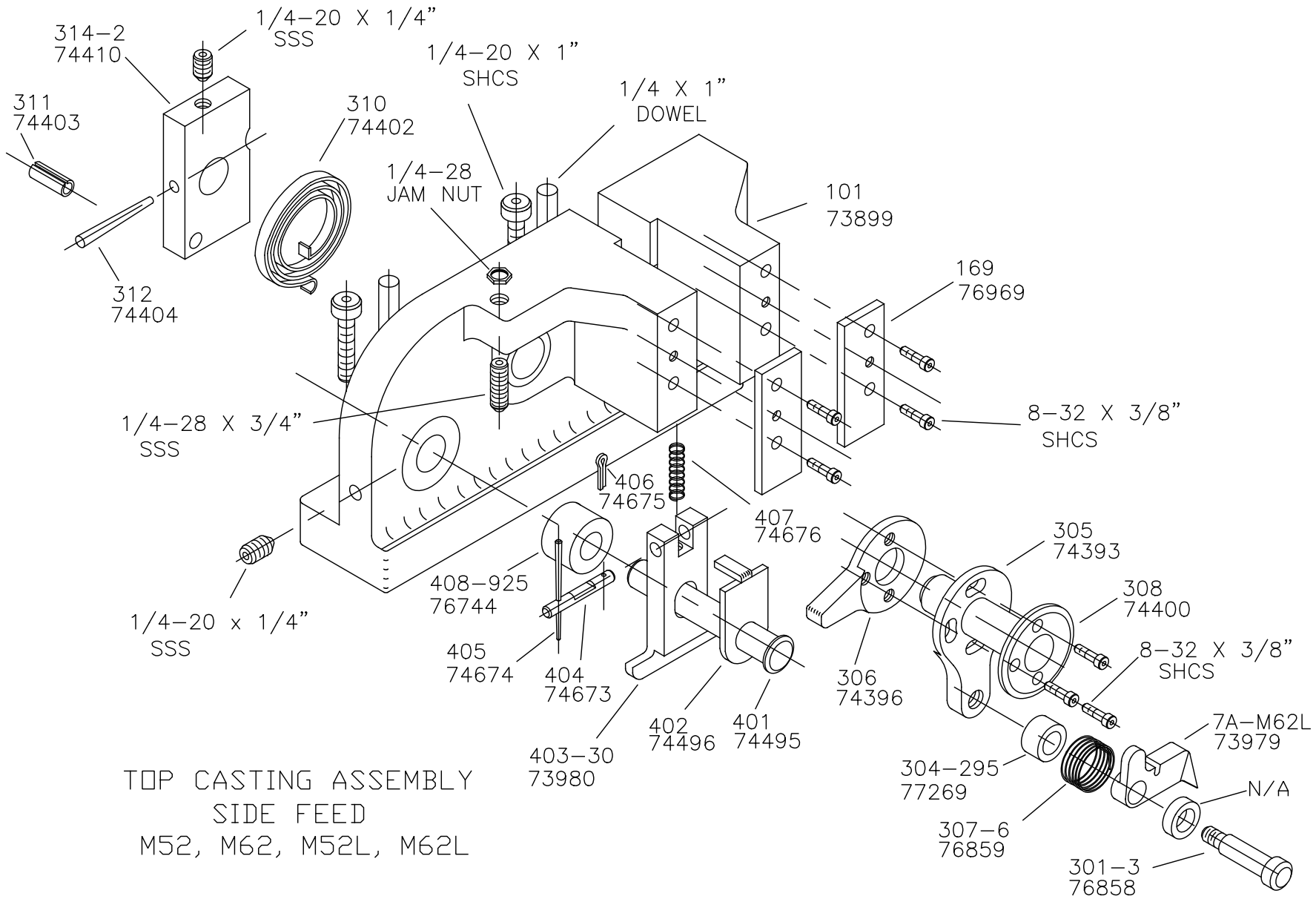
**WARNING !  
NEVER OPERATE  
THIS OR ANY  
APPLICATOR  
WITHOUT SAFETY  
GUARD IN POSITION.**

<b>PART CODE</b>	<b>PART NUMBER</b>	<b>QUANTITY</b>	<b>DESCRIPTION</b>
75392	1000	(1)	FRONT / LEFT GUIDE
74282	257	(1)	DIE PLATE
73934	201	(1)	BASE PLATE
70436	*8B-M62L	(1)	DIE
71225	*9-D150A	(1)	ANVIL
76186	1800	(1)	STOCK CHUTE
		N/A	GUARD SPACER
73922	176	(1)	GUARD
		(1)	10-32 X 1 1/4" S.H.C.S.
		(1)	1/4-28 X 1/2" S.H.C.S.
		(2)	1/8 X 1" DOWEL
		(1)	5/16 X 3/4" SHOULDER SCREW
		(2)	1/4-28 X 3/4" S.S.S.
		(2)	1/4-20 X 1" S.H.C.S.
		(2)	1/4 X 1" DOWEL
		(1)	1/4-28 JAM NUT
		(1)	1/4-20 X 1/4" S.H.C.S.
		(10)	8-32 X 3/8" S.H.C.S.
		(3)	10-32 X 1/2" S.H.C.S.
		(1)	8-32 X 3/4" S.H.C.S.
		(2)	6-32 X 3/8" S.H.C.S.
		(6)	8-32 X 1/2" S.H.C.S.
		(1)	1/8 X 1/2" DOWEL
		(2)	1/8 X 3/8" DOWEL

**NOTE: ITEMS MARKED WITH AN \*  
ARE HIGH WEAR ITEMS**

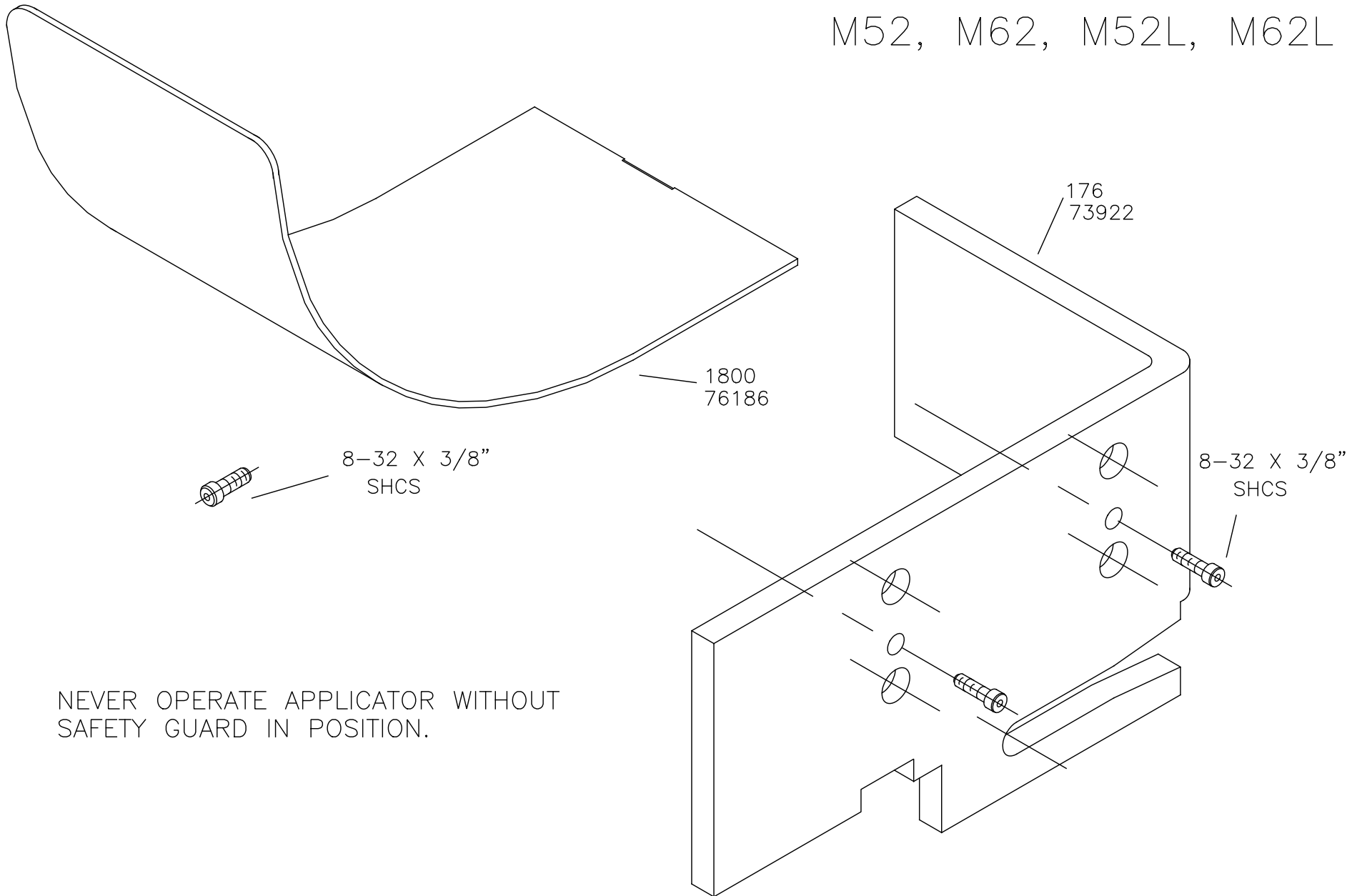
BASE PLATE ASSEMBLY  
SIDE FEED  
M52, M62, M52L, M62L



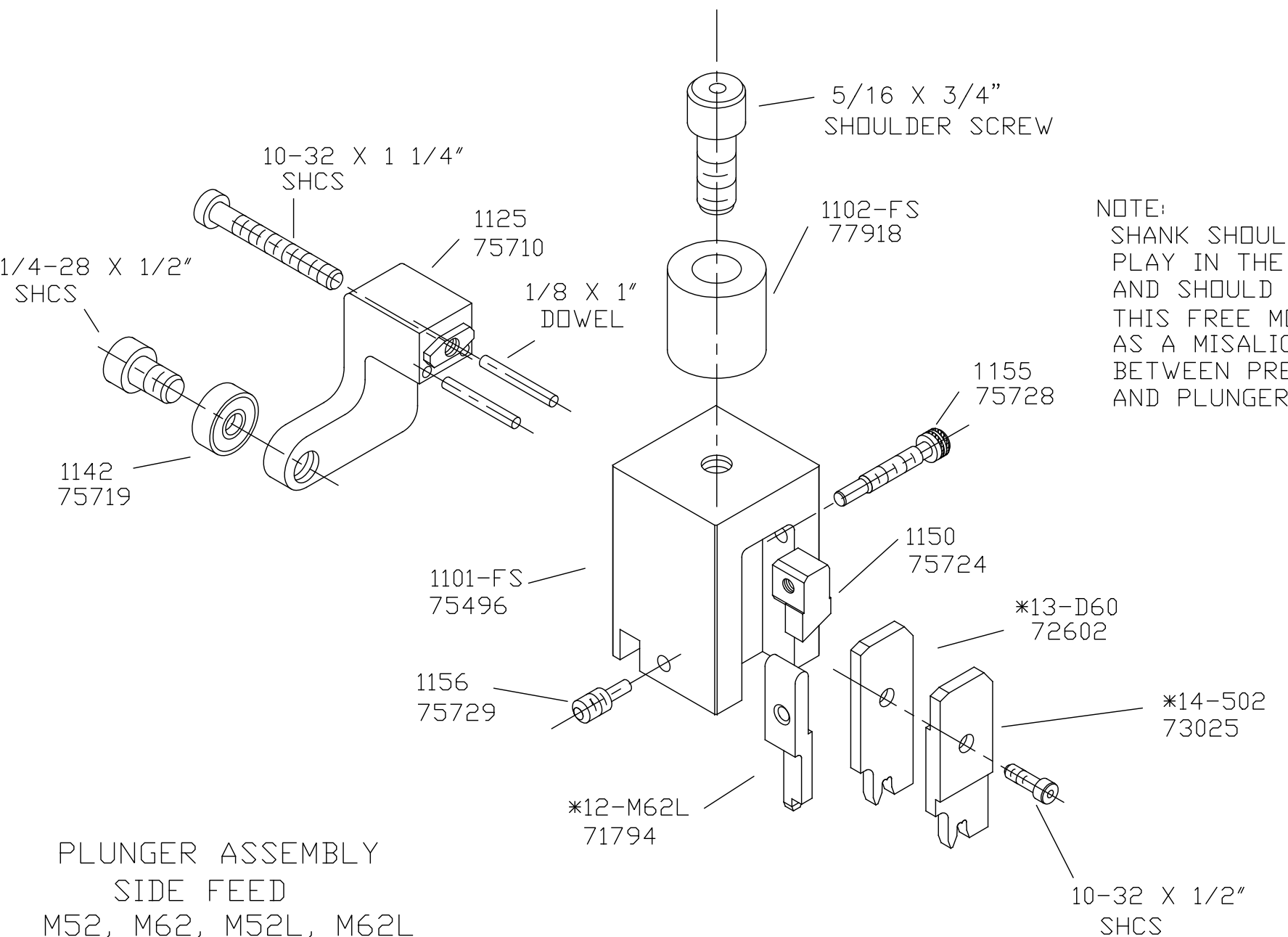


TOP CASTING ASSEMBLY  
 SIDE FEED  
 M52, M62, M52L, M62L

# CHUTE AND GUARD M52, M62, M52L, M62L



NEVER OPERATE APPLICATOR WITHOUT  
SAFETY GUARD IN POSITION.



NOTE:  
 SHANK SHOULD HAVE FREE  
 PLAY IN THE VERTICAL AXIS  
 AND SHOULD SPIN FREELY.  
 THIS FREE MOTION SERVES  
 AS A MISALIGNMENT COUPLING  
 BETWEEN PRESS RAM  
 AND PLUNGER.

PLUNGER ASSEMBLY  
 SIDE FEED  
 M52, M62, M52L, M62L

5/16 X 3/4"  
 SHOULDER SCREW

10-32 X 1 1/4"  
 SHCS

1/4-28 X 1/2"  
 SHCS

1125  
 75710

1/8 X 1"  
 DOWEL

1102-FS  
 77918

1155  
 75728

1142  
 75719

1101-FS  
 75496

1150  
 75724

\*13-D60  
 72602

1156  
 75729

\*14-502  
 73025

\*12-M62L  
 71794

10-32 X 1/2"  
 SHCS