



**REFERENCE LIST:  
R-415-E  
REAR FEED  
ECC APPLICATOR  
BILL OF MATERIALS NUMBER  
79875  
REV A**

**WARNING !  
NEVER OPERATE  
THIS OR ANY  
APPLICATOR  
WITHOUT SAFETY  
GUARD IN POSITION.**

PART CODE	PART NUMBER	QUANTITY	DESCRIPTION
73007	11-210-FS	(1)	PLUNGER
77918	1102-FS	(1)	FLOATING SHANK
71174	*8-268-2	(1)	FRONT CUT-OFF DIE
77989	*8-269	(1)	DIE
77990	*9-534	(1)	ANVIL
77991	*12-233	(1)	CUT-OFF PUNCH
77992	*13-254	(1)	ROLLING TOOL
78103	26-131	(1)	PRESSURE PAD
71179	26-364	(1)	LIFTER
75713	11B1	(1)	CAM ROLLER BRACKET
75719	1142	(1)	CAM ROLLER BEARING
70062	314L-145	(1)	CAM BODY
77106	312-1	(1)	CAM TAPER PIN
74402	310	(1)	CLOCK SPRING
73706	311-1	(1)	ROLL PIN
76969	169	(2)	UNIVERSAL GIB
73903	101-35	(1)	TOP CASTING
76800	116-250R	(1)	CASTING SPACER
73972	408-699	(1)	BRAKE SPACER
74676	407	(1)	SPRING
74675	406	(1)	COTTER PIN
74674	405	(1)	TAPER PIN
74673	404	(1)	BRAKE CAM
73970	403-186	(1)	BRAKE BODY
74496	402	(1)	BRAKE SPRING RETAINER
74495	401	(1)	BRAKE SHAFT
77049	306-1	(1)	FEED FINGER STOP
70060	305-6	(1)	FEED FINGER ARM
77269	304-375	(1)	REAR SPACER
74400	308	(1)	FEED SHAFT
76859	307-6	(1)	FEED TENSION SPRING
70061	303-104-1	(1)	FEED FINGER
73709	302-048	(1)	FRONT SPACER

**NOTE: ITEMS MARKED WITH AN \*  
ARE HIGH WEAR ITEMS**



**REFERENCE LIST:**  
**R-415-E**  
**REAR FEED**  
**ECC APPLICATOR**  
**BILL OF MATERIALS NUMBER**  
**79875**  
**REV A**

**WARNING !**  
**NEVER OPERATE**  
**THIS OR ANY**  
**APPLICATOR**  
**WITHOUT SAFETY**  
**GUARD IN POSITION.**

PART CODE	PART NUMBER	QUANTITY	DESCRIPTION
76858	301-3	(1)	SHOULDER SCREW
72180	202-20	(1)	BASE PLATE
73674	250-371	(1)	FEED PLATE
73973	500-371	(1)	RIGHT GUIDE
73712	1000-243	(1)	LEFT GUIDE
73218	176-34	(1)	GUARD
		(4)	1/8 X 1/2" DOWEL
		(2)	1/8 X 1" DOWEL
		(13)	8-32 X 3/8" S.H.C.S.
		(4)	8-32 X 1/2" S.H.C.S.
		(2)	8-32 X 1 5/8" S.H.C.S.
		(1)	10-32 X 3/8" S.H.C.S.
		(1)	10-32 X 1/2" S.H.C.S.
		(1)	10-32 X 1 1/2" S.H.C.S.
		(2)	1/4-20 X 1/4" S.S.S.
		(2)	1/4-20 X 1" S.H.C.S.
		(1)	1/4-28 X 1/2" S.H.C.S.
		(1)	1/4-28 X 5/8" S.S.S.
		(1)	1/4-28 JAM NUT
		(2)	1/4 X 1 1/2" SHOULDER SCREW
		(2)	1/4 X 1" DOWEL
		(1)	5/16 X 3/4" SHOULDER SCREW
		(2)	7/16-20 X 3/8" S.S.S.
		(2)	(M-100) 3/8 X 1" DIE SPRING
71177	LC-014A-02M	(1)	SPRING

**NOTE: ITEMS MARKED WITH AN \***  
**ARE HIGH WEAR ITEMS**

*ECC APPLICATOR  
REAR FEED  
R415E*

8-32 X 3/8 S.H.C.S. (4)

LEFT GUIDE  
1000-243  
73712

RIGHT GUIDE  
500-371  
73973

DOWEL  
1/8 X 1/2 (4)

8-32 X 1/2 S.H.C.S. (4)

DIE PLATE  
250-371  
73674

REAR CUT-OFF DIE  
\*8-269  
77989

FRONT CUT-OFF DIE  
\*8-268-2  
71174

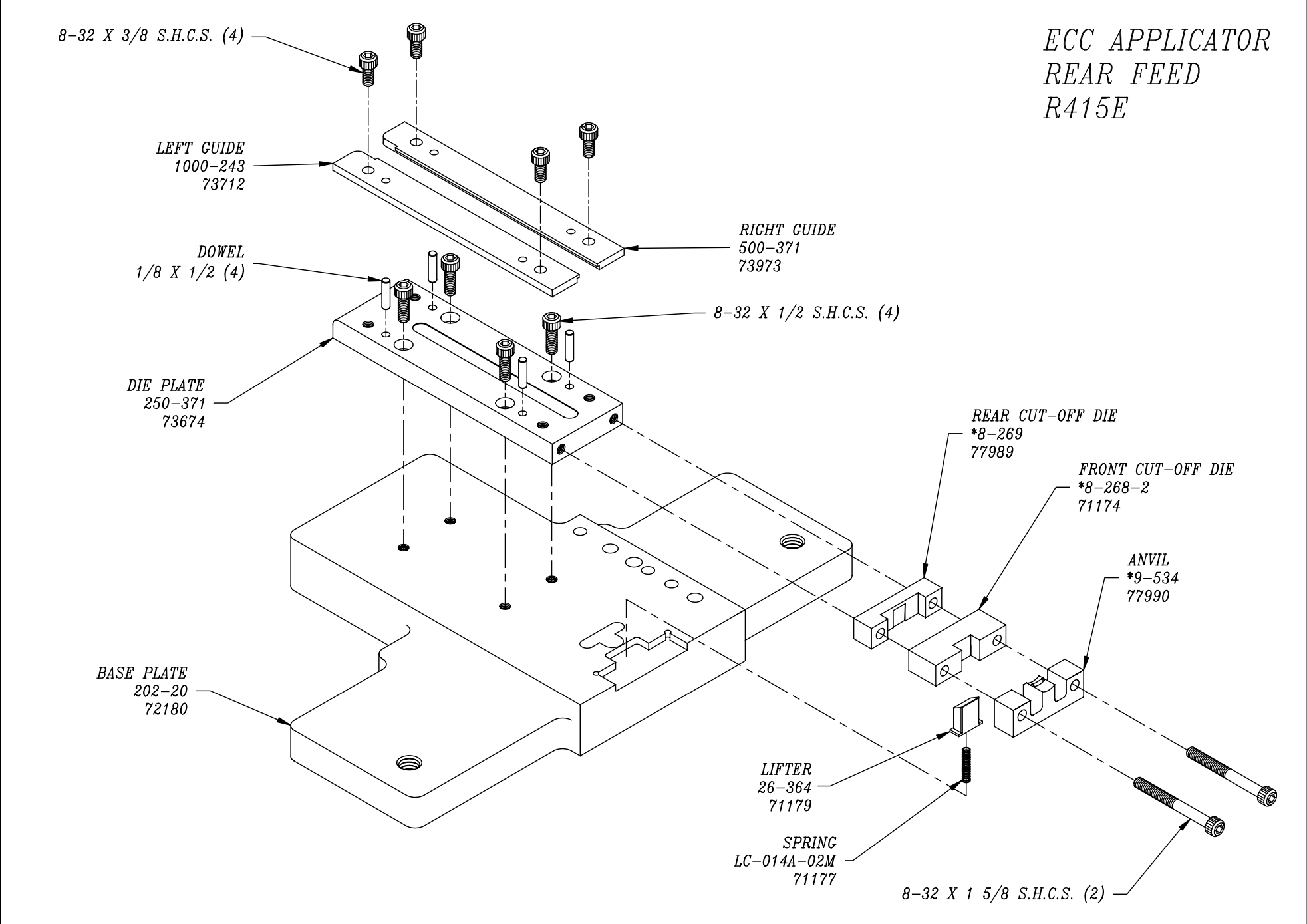
ANVIL  
\*9-534  
77990

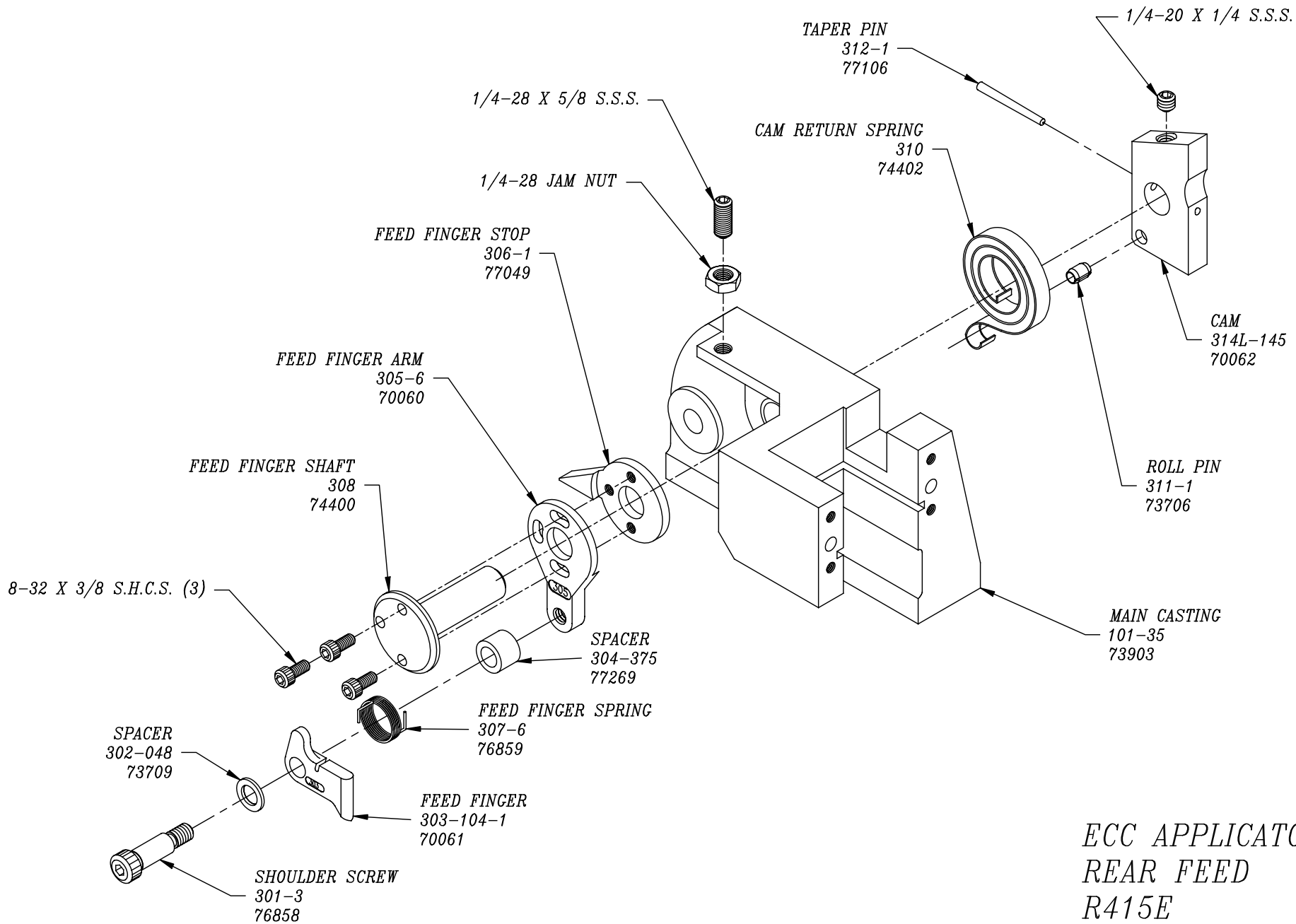
BASE PLATE  
202-20  
72180

LIFTER  
26-364  
71179

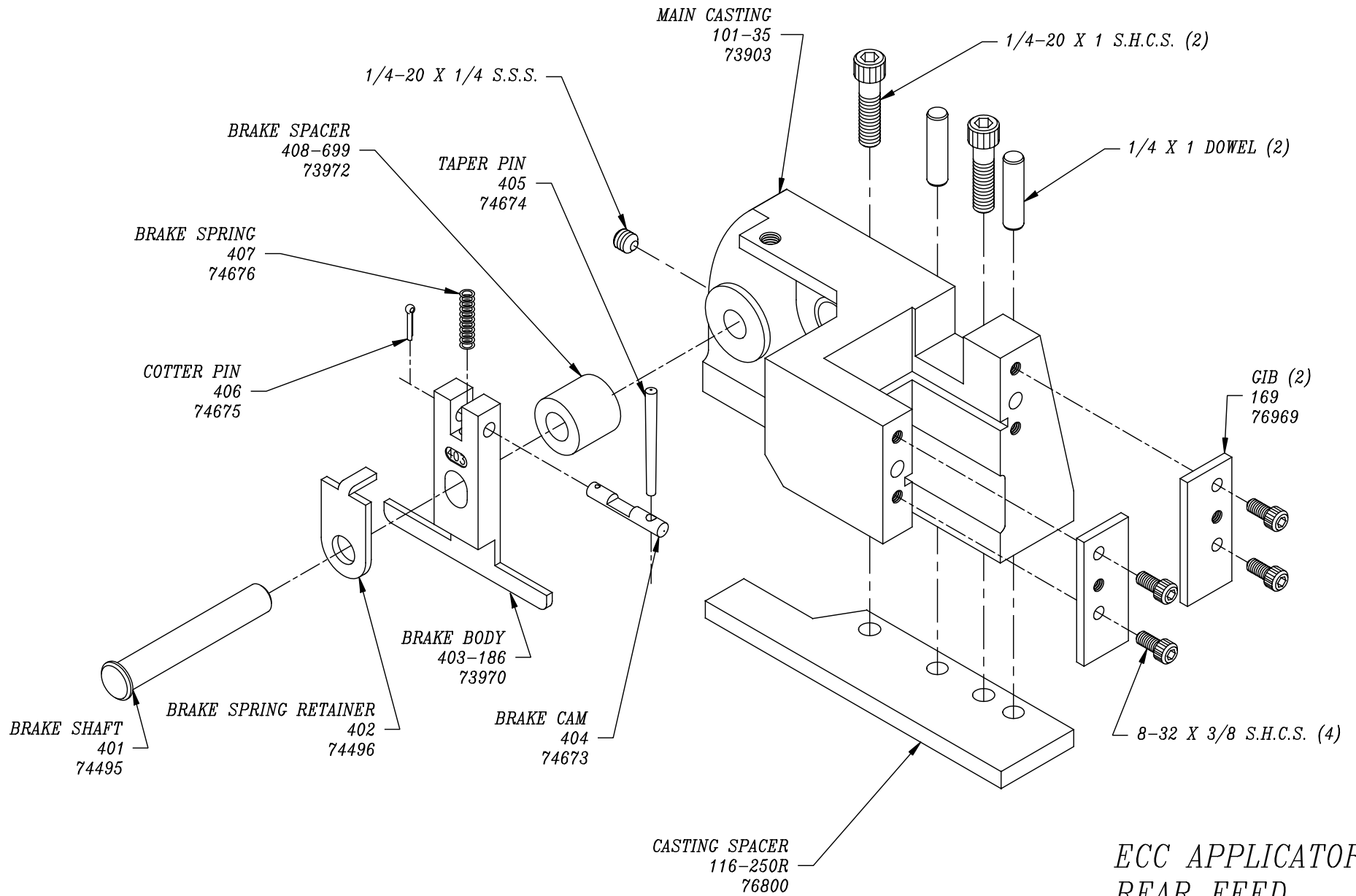
SPRING  
LC-014A-02M  
71177

8-32 X 1 5/8 S.H.C.S. (2)





ECC APPLICATOR  
 REAR FEED  
 R415E



ECC APPLICATOR  
 REAR FEED  
 R415E

5/16 X 3/4 SHOULDER SCREW

FLOATING SHANK  
1102-FS  
77918

7/16-20 X 3/8 S.S.S. (2)

DIE SPRING  
3/8 X 1  
(M-100)

1/4 X 1 1/2 SHOULDER SCREW (2)

10-32 X 3/8 S.H.C.S.

CUT-OFF PUNCH  
\*12-233  
77991

PLUNGER  
11-210-FS  
77918

PRESSURE PAD  
26-131  
78103

CAM ROLLER BEARING  
1142  
75719

1/8 X 1 DOWEL (2)

10-32 X 1 1/2 S.H.C.S.

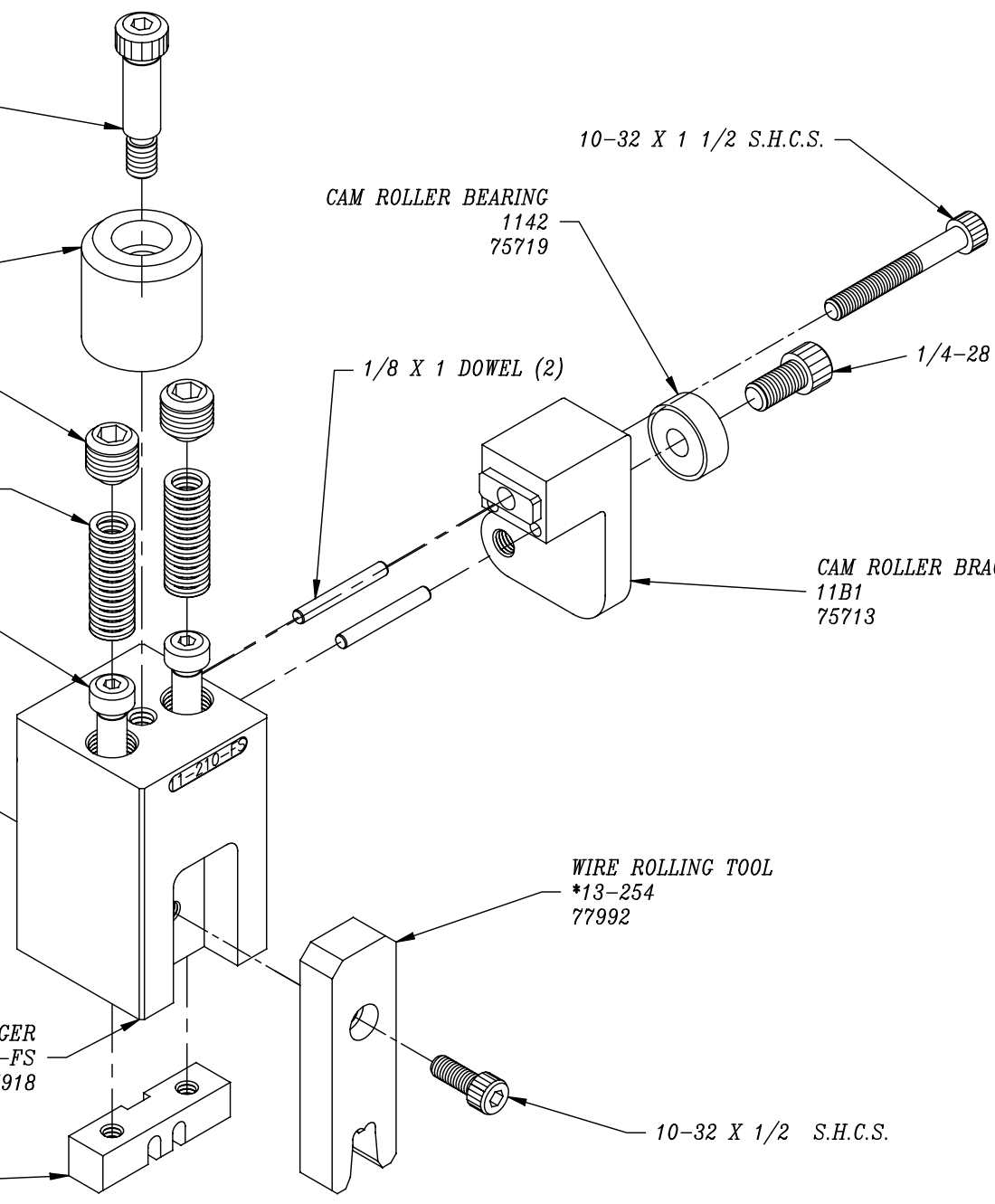
1/4-28 X 1/2 S.H.C.S.

CAM ROLLER BRACKET  
11B1  
75713

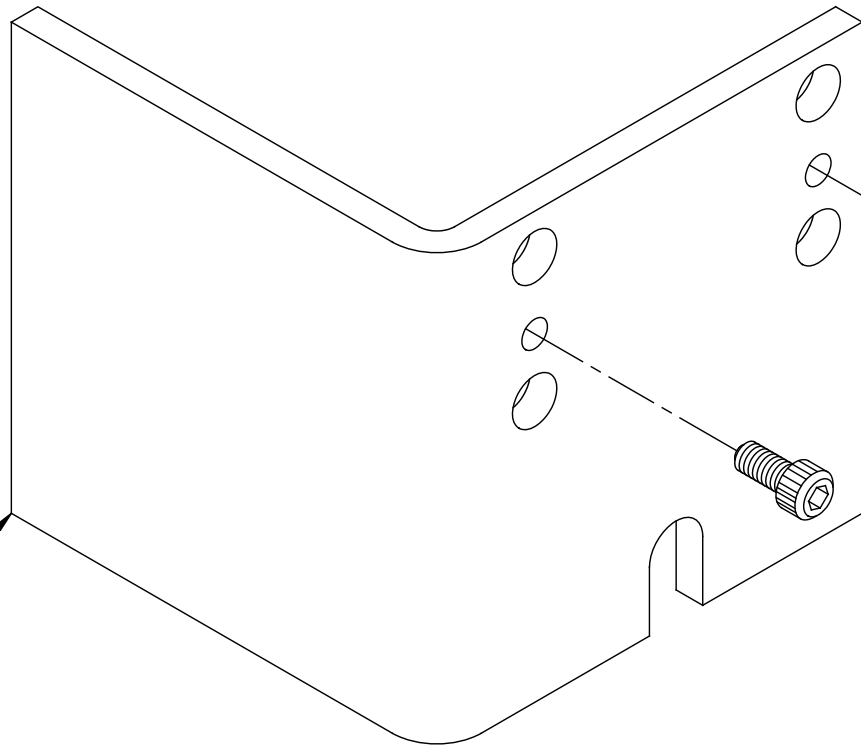
WIRE ROLLING TOOL  
\*13-254  
77992

10-32 X 1/2 S.H.C.S.

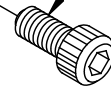
ECC APPLICATOR  
REAR FEED  
R415E



*GUARD*  
179-34  
73218



8-32 X 3/8 S.H.C.S. (2)



*ECC APPLICATOR*  
*REAR FEED*  
*R415E*