



**REFERENCE LIST:  
S127N  
ECC APPLICATOR  
SIDE FEED  
BILL OF MATERIAL NUMBER  
79876**

**WARNING !  
NEVER OPERATE  
THIS OR ANY  
APPLICATOR  
WITHOUT SAFETY  
GUARD IN POSITION.**

PART CODE	PART NUMBER	QUANTITY	DESCRIPTION
75496	1101-FS	(1)	PLUNGER
77918	1102-FS	(1)	FLOATING SHANK
75729	1156	(1)	CUT-OFF SCREW
75728	1155	(1)	ADJUST SCREW
75724	1150	(1)	INSULATION BLOCK
75710	1125	(1)	CAM ROLLER BRACKET
75719	1142	(1)	CAM ROLLER BEARING
73112	*12-S125-2	(1)	CUT-OFF PUNCH
73101	*13-S125-2	(1)	WIRE ROLLING TOOL
73075	*14-S120-1	(1)	INSULATION ROLLING TOOL
74410	314L-2	(1)	CAM
74403	311	(1)	SPRING PIN
74404	312	(1)	CAM TAPER PIN
74402	310	(1)	CAM RETURN SPRING
73899	101	(1)	TOP CASTING
76969	169	(2)	UNIVERSAL GIBS
74675	406	(1)	COTTER PIN
74676	407	(1)	BRAKE SPRING
77154	408-.812	(1)	BRAKE BUSHING
74674	405	(1)	TAPER PIN
74673	404	(1)	BRAKE CAM
74498	403-1	(1)	BRAKE BODY
74496	402	(1)	SPRING RETAINER
74495	401	(1)	BRAKE SHAFT
74396	306	(1)	FEED FINGER STOP
74393	305	(1)	FEED FINGER ARM
74400	308	(1)	FEED SHAFT
76894	304-.500	(1)	REAR SPACER
76721	307-7	(1)	SPRING
70090	7A-S125	(1)	FEED FINGER
		N/A	FRONT SPACER
76873	301-4	(1)	SHOULDER SCREW
73952	231	(2)	STRIPPER SPRING
73078	1611-1	(1)	WIRE STRIPPER / STOP
73955	235	(1)	GUIDE SPACER BLOCK
73120	518-1	(1)	REAR / RIGHT GUIDE

**NOTE: ITEMS MARKED WITH AN \*  
ARE HIGH WEAR ITEMS**



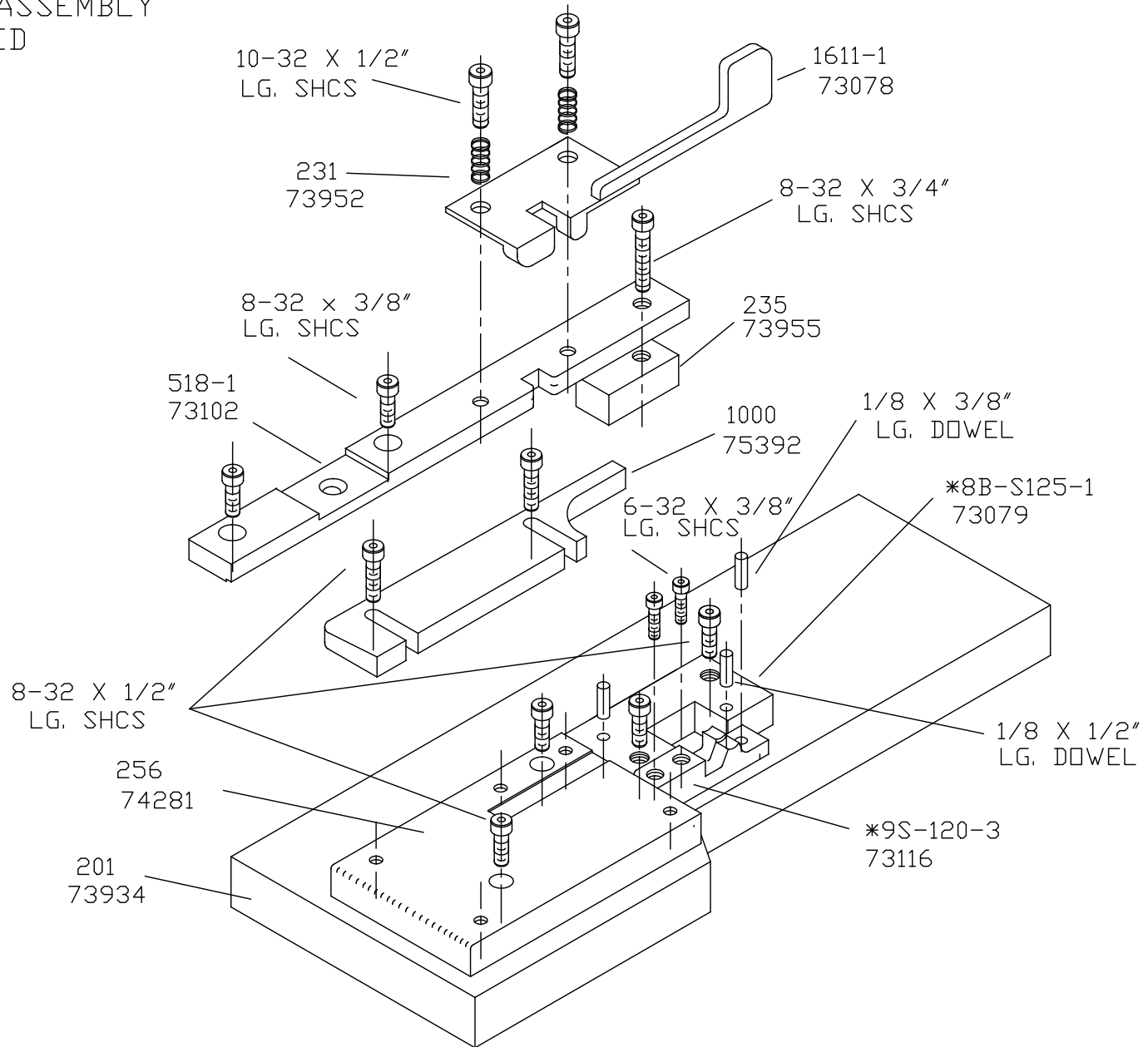
**REFERENCE LIST:**  
**S127N**  
**ECC APPLICATOR**  
**SIDE FEED**  
**BILL OF MATERIAL NUMBER**  
**79876**

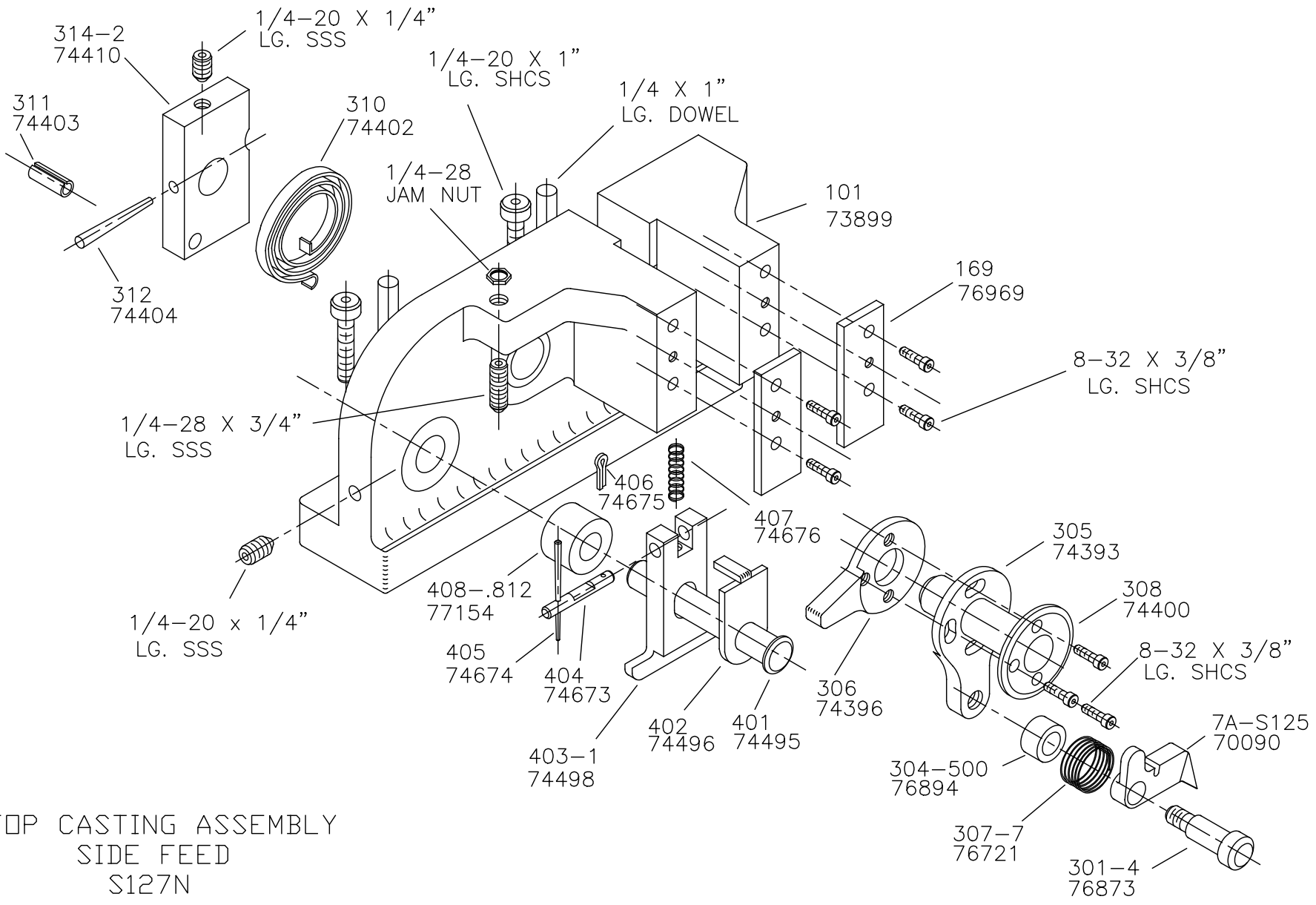
**WARNING !**  
**NEVER OPERATE**  
**THIS OR ANY**  
**APPLICATOR**  
**WITHOUT SAFETY**  
**GUARD IN POSITION.**

PART CODE	PART NUMBER	QUANTITY	DESCRIPTION
75392	1000	(1)	FRONT / LEFT GUIDE
74281	256	(1)	DIE PLATE
73934	201	(1)	BASE PLATE
73079	*8B-S125-1	(1)	DIE
73116	*9S-120-3	(1)	ANVIL
76186	1800	(1)	STOCK CHUTE
		N/A	GUARD SPACER
73922	176	(1)	GUARD
		(1)	10-32 X 1 1/4" S.H.C.S.
		(1)	1/4-28 X 1/2" S.H.C.S.
		(2)	1/8 X 1" DOWEL
		(1)	5/16 X 3/4" SHOULDER SCREW
		(2)	1/4-28 X 3/4" S.S.S.
		(2)	1/4-20 X 1" S.H.C.S.
		(2)	1/4 X 1" DOWEL
		(1)	1/4-28 JAM NUT
		(1)	1/4-20 X 1/4" S.H.C.S.
		(10)	8-32 X 3/8" S.H.C.S.
		(3)	10-32 X 1/2" S.H.C.S.
		(1)	8-32 X 3/4" S.H.C.S.
		(2)	6-32 X 3/8" S.H.C.S.
		(6)	8-32 X 1/2" S.H.C.S.
		(1)	1/8 X 1/2" DOWEL
		(2)	1/8 X 3/8" DOWEL

**NOTE: ITEMS MARKED WITH AN \***  
**ARE HIGH WEAR ITEMS**

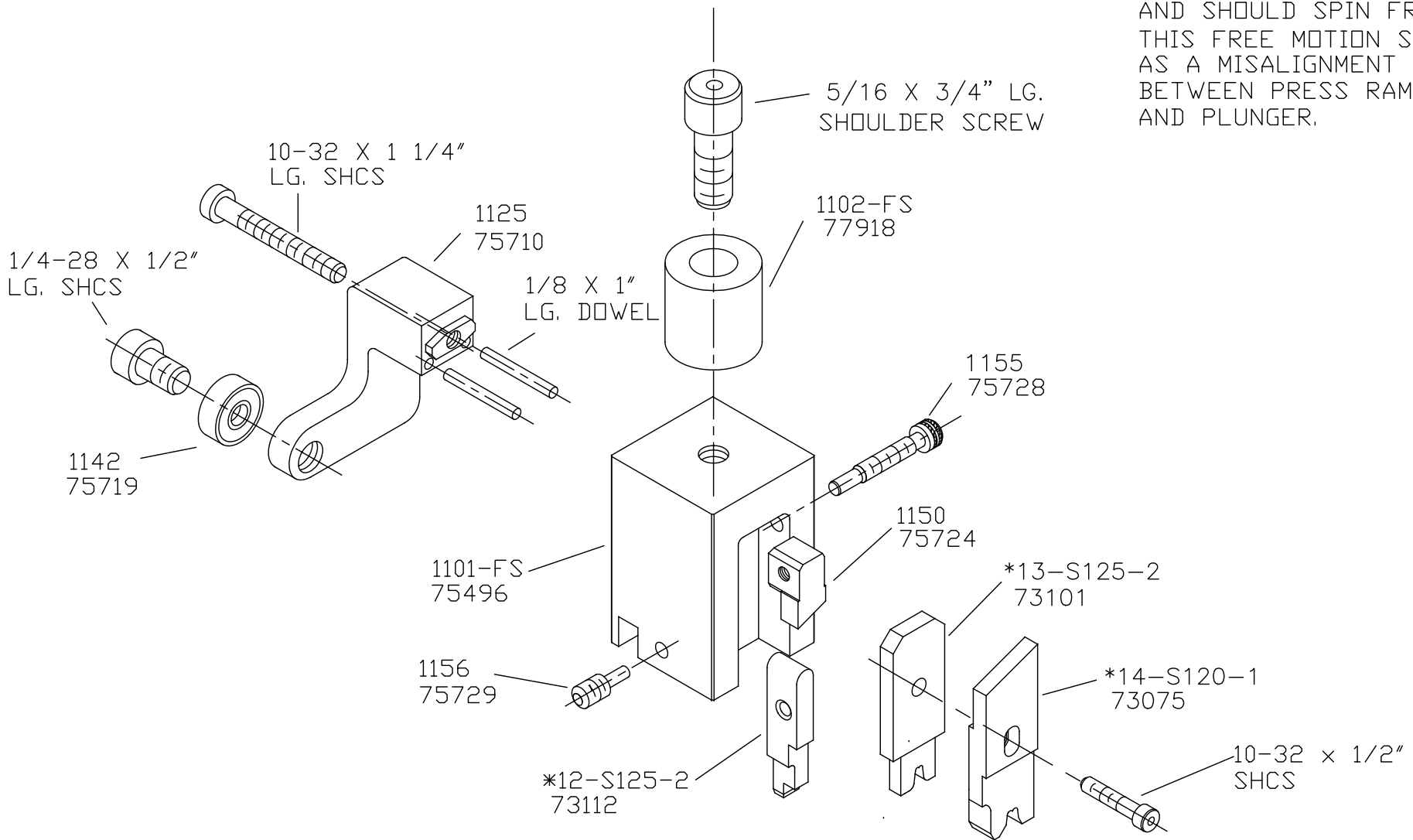
BASE PLATE ASSEMBLY  
SIDE FEED  
S127N





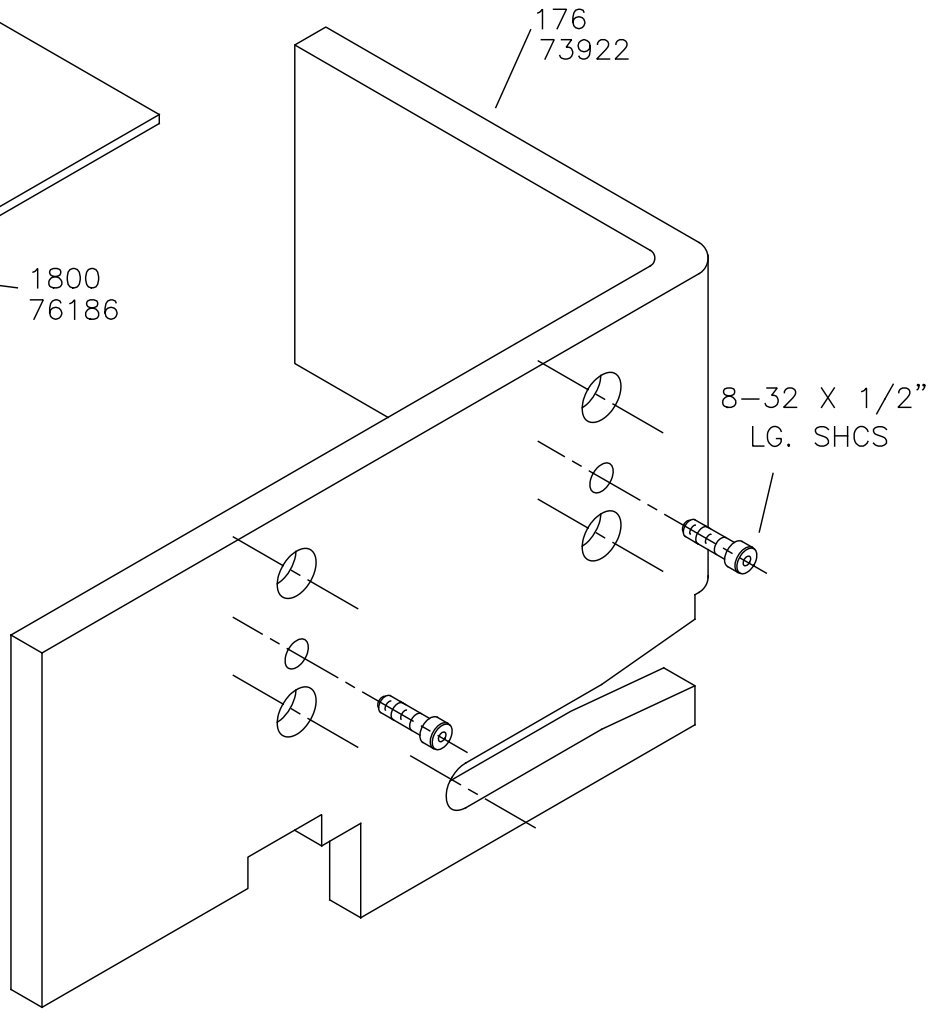
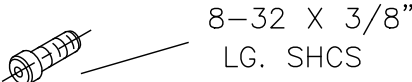
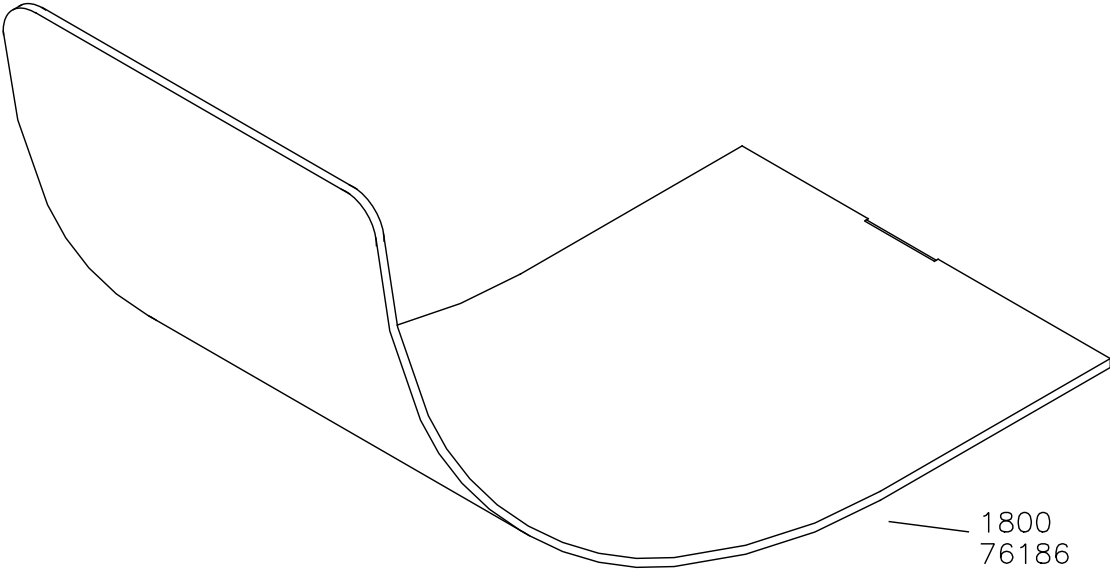
TOP CASTING ASSEMBLY  
 SIDE FEED  
 S127N

NOTE:  
 SHANK SHOULD HAVE FREE  
 PLAY IN THE VERTICAL AXIS  
 AND SHOULD SPIN FREELY.  
 THIS FREE MOTION SERVES  
 AS A MISALIGNMENT COUPLING  
 BETWEEN PRESS RAM  
 AND PLUNGER.



PLUNGER ASSEMBLY  
 SIDE FEED  
 S127N

# CHUTE AND GUARD S127N



NEVER OPERATE APPLICATOR WITHOUT  
SAFETY GUARD IN POSITION.