



REFERENCE LIST:
PT-1
ECC APPLICATOR
BILL OF MATERIAL NUMBER
79883

WARNING !
NEVER OPERATE
THIS OR ANY APPLICATOR
WITHOUT SAFETY GUARD
IN POSITION.

PART CODE	PART NUMBER	QUANTITY	DESCRIPTION
77919	1102-FS-1	(1)	PLUNGER
77918	1102-FS	(1)	FLOATING SHANK
		N/A	CUT-OFF SCREW
		N/A	ADJUST SCREW
		N/A	INSULATION BLOCK
75710	1125	(1)	CAM ROLLER BRACKET
75719	1142	(1)	CAM ROLLER BEARING
77763	15-062	(1)	CUT-OFF DRIVER
77722	*13-245	(1)	WIRE ROLLING TOOL
		N/A	INSULATION ROLLING TOOL
74410	314L-2	(1)	CAM
74403	311	(1)	SPRING PIN
74404	312	(1)	CAM TAPER PIN
74402	310	(1)	CAM RETURN SPRING
73899	101	(1)	TOP CASTING
76969	169	(2)	UNIVERSAL GIBS
		N/A	GIB
74675	406	(1)	COTTER PIN
74676	407	(1)	BRAKE SPRING
77452	408-.875	(1)	BRAKE BUSHING
74674	405	(1)	TAPER PIN
74673	404	(1)	BRAKE CAM
73856	403-179	(1)	BRAKE BODY
74496	402	(1)	SPRING RETAINER
74495	401	(1)	BRAKE SHAFT
74396	306	(1)	FEED FINGER STOP
74393	305	(1)	FEED FINGER ARM
74392	304-.750	(1)	REAR SPACER
74400	308	(1)	FEED SHAFT
76743	307-16	(1)	SPRING
73855	303-98	(1)	FEED FINGER
		N/A	FRONT SPACER
76713	301-5	(1)	SHOULDER SCREW
73952	231	(2)	STRIPPER SPRING
77767	1600-248	(1)	STRIPPER / STOP
77765	4-026-1"	(1)	SPRING
73859	500-359	(1)	REAR / RIGHT GUIDE
73858	1000-233	(1)	FRONT / LEFT GUIDE

NOTE: ITEMS MARKED WITH AN *
ARE HIGH WEAR ITEMS



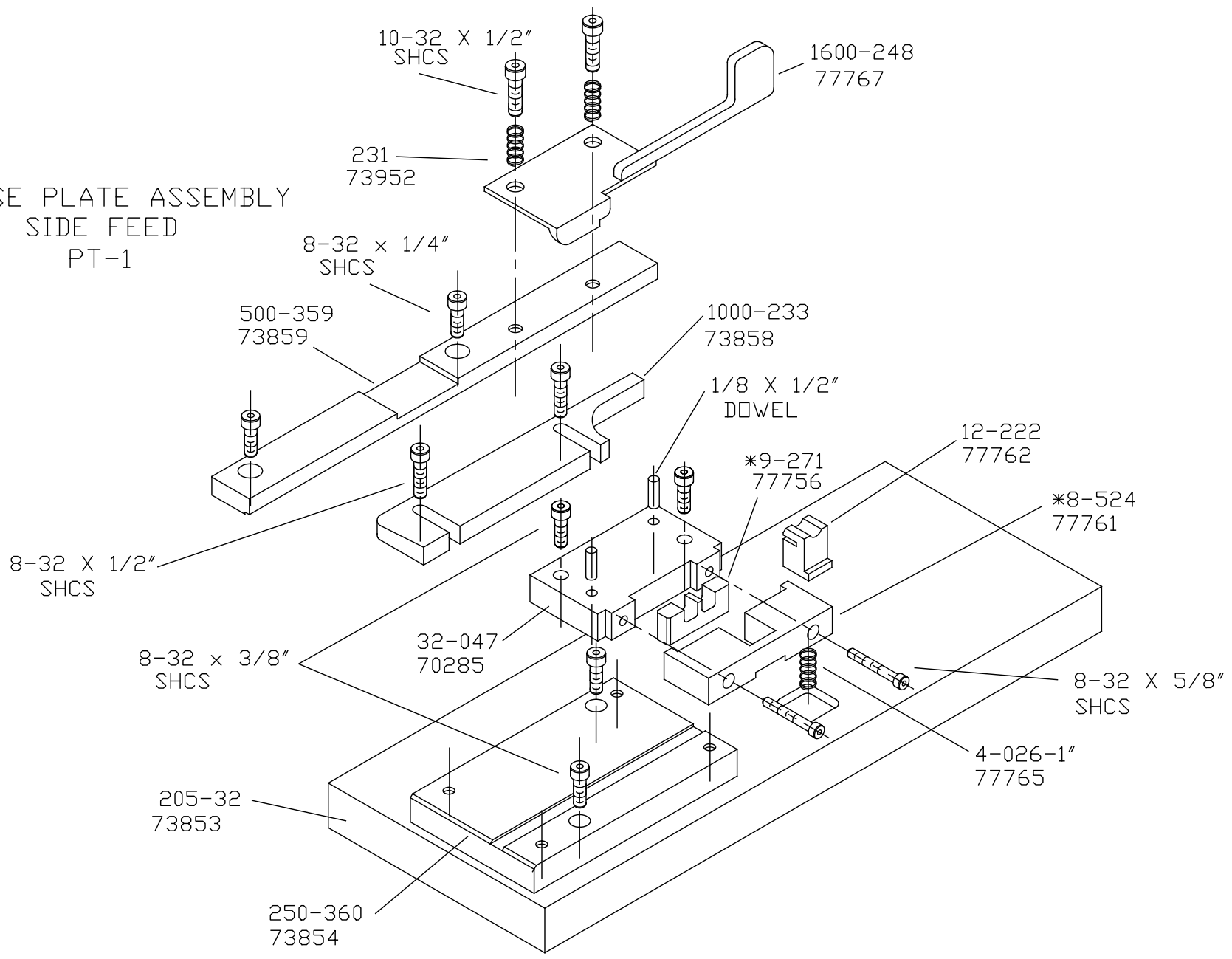
REFERENCE LIST:
PT-1
 ECC APPLICATOR
 BILL OF MATERIAL NUMBER
79883

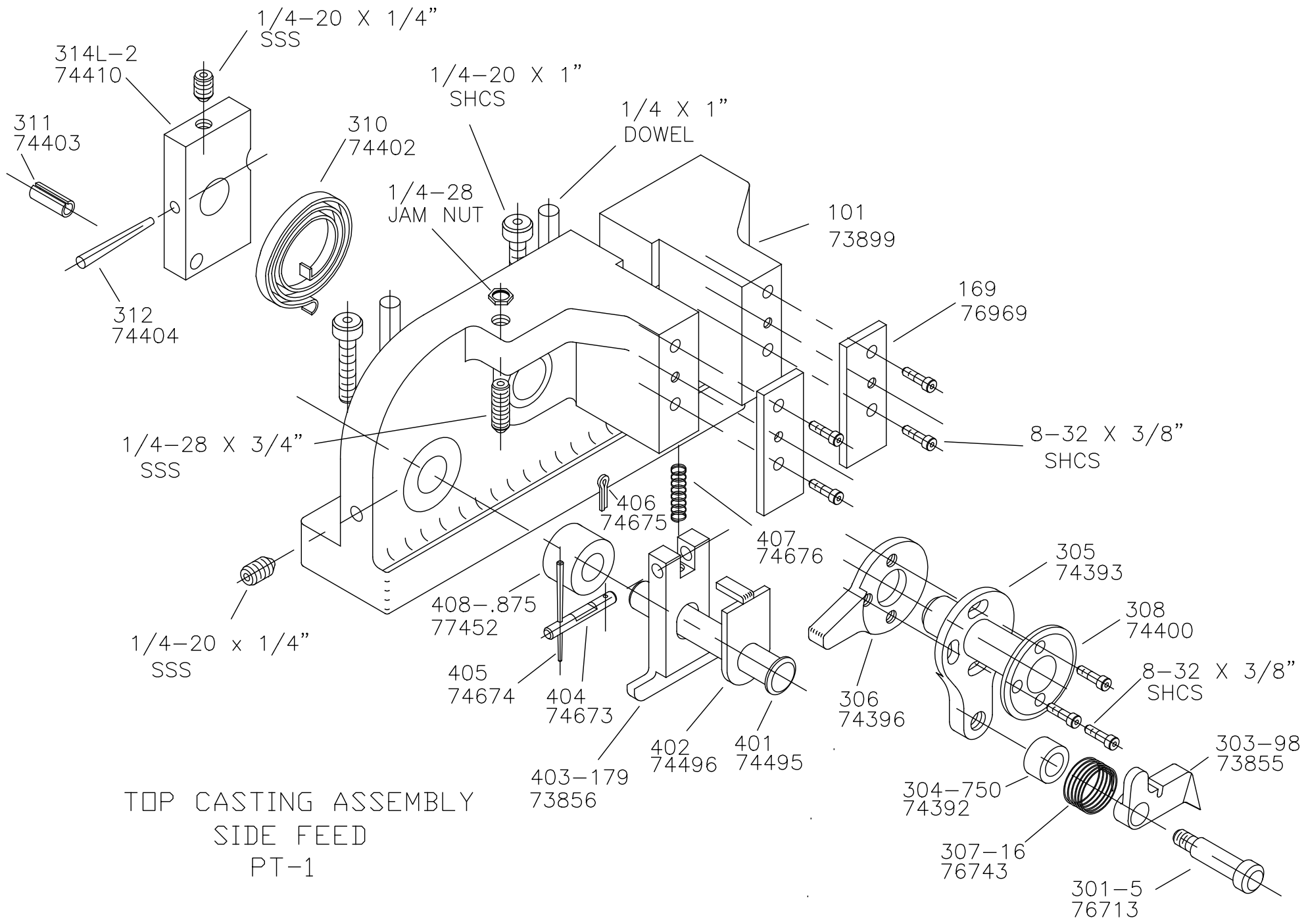
WARNING !
 NEVER OPERATE
 THIS OR ANY APPLICATOR
 WITHOUT SAFETY GUARD
 IN POSITION.

PART CODE	PART NUMBER	QUANTITY	DESCRIPTION
73854	250-360	(1)	DIE PLATE
77762	*12-222	(1)	CUT-OFF PUNCH
70285	32-047	(1)	REAR DIE
77761	*8-524	(1)	DIE
73853	205-32	(1)	BASE PLATE
77756	*9-271	(1)	ANVIL
76186	1800	(1)	STOCK CHUTE
		N/A	GUARD SPACER
73532	176-32	(1)	GUARD
		(1)	10-32 X 1 1/4" S.H.C.S.
		(1)	1/4-28 X 1/2" S.H.C.S.
		(2)	1/8 X 1" DOWEL
		(1)	5/16 X 3/4" SHOULDER SCREW
		(1)	1/4-28 X 3/4" S.S.S.
		(2)	1/4-20 X 1" S.H.C.S.
		(2)	1/4 X 1" DOWEL
		(1)	1/4-28 JAM NUT
		(2)	1/4-20 X 1/4" S.H.C.S.
		(14)	8-32 X 3/8" S.H.C.S.
		(3)	10-32 X 1/2" S.H.C.S.
		(2)	8-32 X 5/8" S.H.C.S.
		(2)	8-32 X 1/4" S.H.C.S.
		(2)	8-32 X 1/2" S.H.C.S.
		(1)	1/8 X 1/2" DOWEL

NOTE: ITEMS MARKED WITH AN *
 ARE HIGH WEAR ITEMS

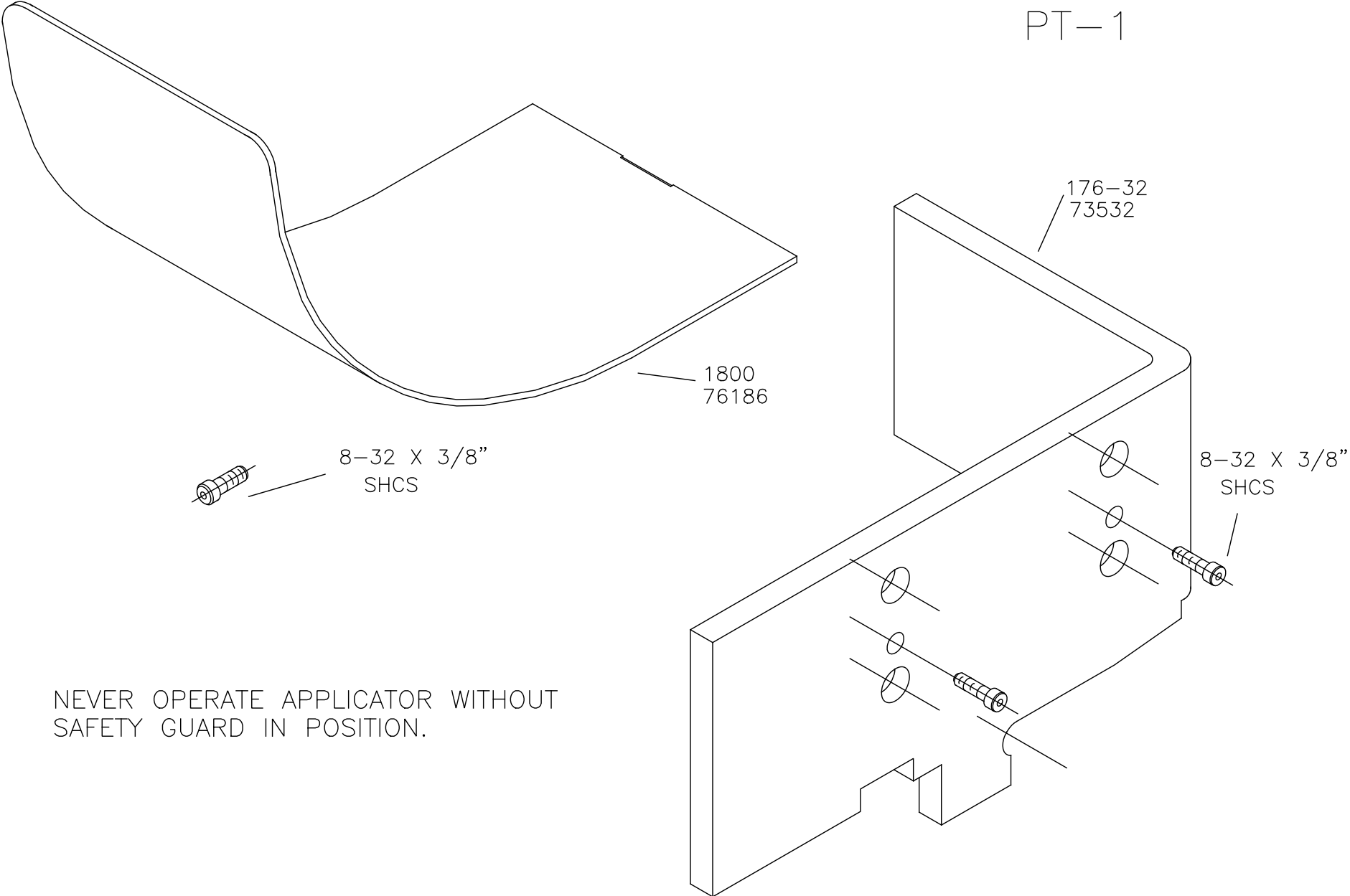
BASE PLATE ASSEMBLY
SIDE FEED
PT-1



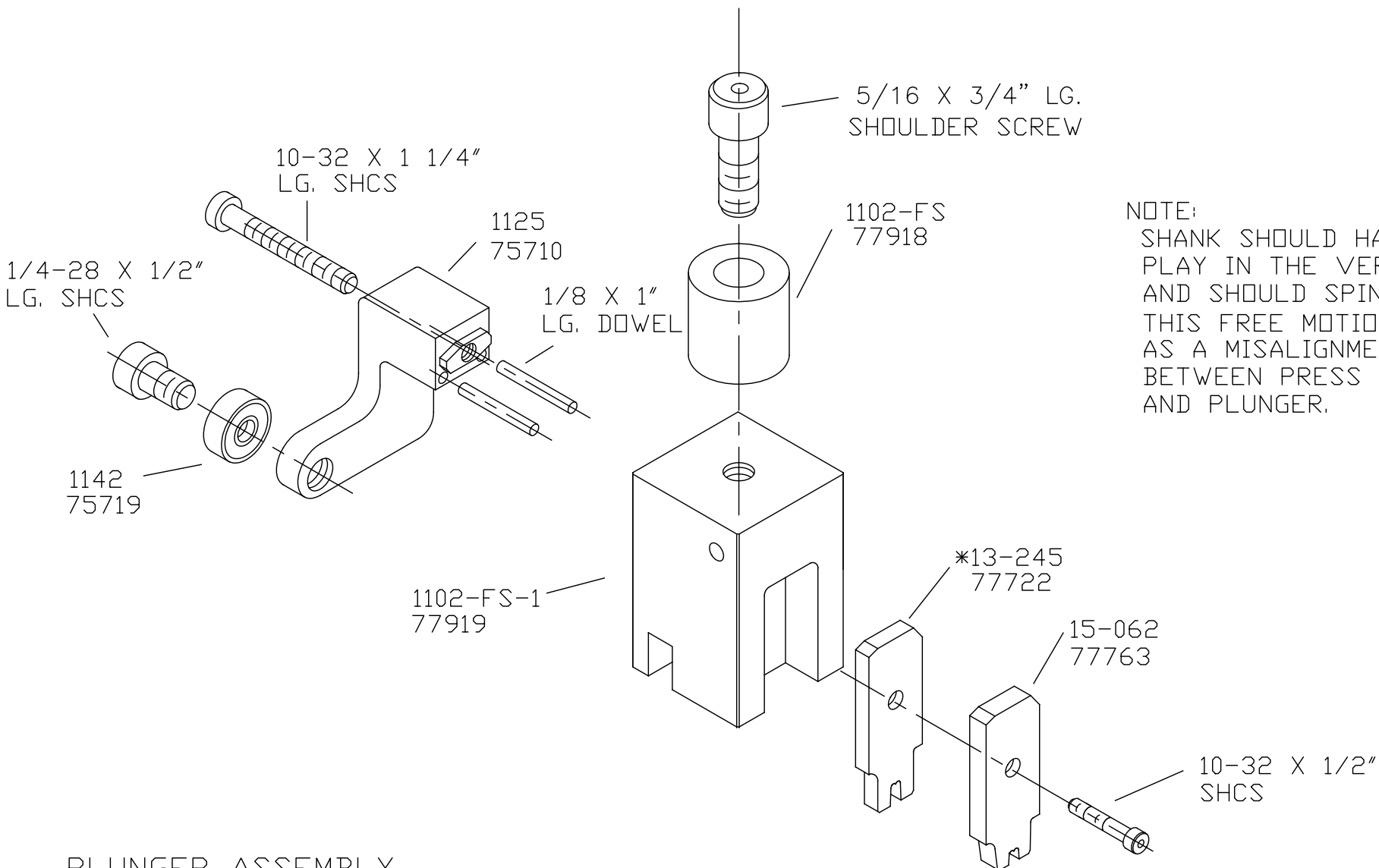


TOP CASTING ASSEMBLY
 SIDE FEED
 PT-1

CHUTE AND GUARD PT-1



NEVER OPERATE APPLICATOR WITHOUT
SAFETY GUARD IN POSITION.



NOTE:
 SHANK SHOULD HAVE FREE
 PLAY IN THE VERTICAL AXIS
 AND SHOULD SPIN FREELY.
 THIS FREE MOTION SERVES
 AS A MISALIGNMENT COUPLING
 BETWEEN PRESS RAM
 AND PLUNGER.

PLUNGER ASSEMBLY
 SIDE FEED
 PT-1