



REFERENCelist:
D-166E-N
ECC APPLICATOR
 BILL OF MATERIAL NUMBER
79887

WARNING !
 NEVER OPERATE
 THIS OR ANY APPLICATOR
 WITHOUT SAFETY GUARD
 IN POSITION.

PART CODE	PART NUMBER	QUANTITY	DESCRIPTION
75580	11060-FS	(1)	PLUNGER
77918	1102-FS	(1)	FLOATING SHANK
75728	1155	(1)	ADJUST BLOCK SCREW
75725	1150-1	(1)	INSULATION BLOCK
71855	*12-D154E	(1)	CUT-OFF PUNCH
73202	*13-280	(1)	WIRE ROLLING TOOL
77508	17-040	(1)	SPACER
73328	*14-078	(1)	INSULATION ROLLING TOOL
75713	11B1	(1)	CAM ROLLER BRACKET
75719	1142	(1)	CAM ROLLER BEARING
74421	314-9	(1)	CAM BODY
77106	312-1	(1)	CAM TAPER PIN
74402	310	(1)	CLOCK SPRING
73706	311-1	(1)	ROLL PIN
76969	169	(1)	RIGHT GIB
77381	169-9	(1)	LEFT GIB
75878	1600-117	(1)	WIRE STRIPPER
77408	101-76	(1)	TOP CASTING
73216	408-720	(1)	BRAKE SPACER
74676	407	(1)	SPRING
74675	406	(1)	COTTER PIN
74674	405	(1)	TAPER PIN
74673	404	(1)	BRAKE CAM
73520	403-135	(1)	BRAKE BODY
74496	402	(1)	BRAKE SPRING RETAINER
74495	401	(1)	BRAKE SHAFT
77049	306-1	(1)	FEED FINGER STOP
74393	305	(1)	FEED FINGER ARM
77736	304-365	(1)	REAR SPACER
74400	308	(1)	FEED SHAFT
76859	307-6	(1)	SPRING
70091	7A-D154E	(1)	FEED FINGER
77735	302-135	(1)	FRONT SPACER
76873	301-4	(1)	SHOULDER SCREW
70105	500-166-1	(1)	RIGHT GUIDE
73036	1000-52-2	(1)	LEFT GUIDE
70183	*8-061	(1)	DIE

**NOTE: ITEMS MARKED WITH AN *
 ARE HIGH WEAR ITEMS**



REFERENCelist:
D-166E-N
ECC APPLICATOR
BILL OF MATERIAL NUMBER
79887

WARNING !
 NEVER OPERATE
 THIS OR ANY APPLICATOR
 WITHOUT SAFETY GUARD
 IN POSITION.

PART CODE	PART NUMBER	QUANTITY	DESCRIPTION
70187	*8-068	(1)	DIE
73276	*9-298	(1)	INSULATION ANVIL
73200	*9-297	(1)	WIRE ANVIL
		N/A	DIE CUT-OFF RETAINER
		N/A	CUT-OFF PUNCH PAD
76845	3-026-75	(1)	SPRING
74150	250-192	(1)	DIE PLATE
73935	202	(1)	BASE PLATE
77512	GS-060	(2)	GUARD SPACER
73967	179-23	(1)	GUARD
		(1)	10-32 X 1 1/2" S.H.C.S.
		(1)	1/4-28 X 1/2" S.H.C.S.
		(2)	1/8 X 1" DOWEL
		(1)	5/16 X 3/4" SHOULDER SCREW
		(1)	1/4-28 X 5/8" S.S.S.
		(2)	1/4-20 X 1" S.H.C.S.
		(2)	1/4 X 1" DOWEL
		(1)	1/4-28 JAM NUT
		(2)	1/4-20 X 1/4" S.S.S.
		(11)	8-32 X 3/8" S.H.C.S.
		(6)	8-32 X 1/2" S.H.C.S.
		(2)	8-32 X 1" S.H.C.S.
		(1)	8-32 X 3/8" S.S.S.
		(1)	3/16 X 1/2" DOWEL

NOTE: ITEMS MARKED WITH AN *
ARE HIGH WEAR ITEMS

*ECC APPLICATOR
REAR FEED
D166E-N*

8-32 X 3/8 S.H.C.S. (4)

LEFT GUIDE
1000-52-2
73036

8-32 X 1/2 S.H.C.S. (4)

RIGHT GUIDE
500-166-1
70105

FEED PLATE
250-192
74150

BASE PLATE
202-17
73671

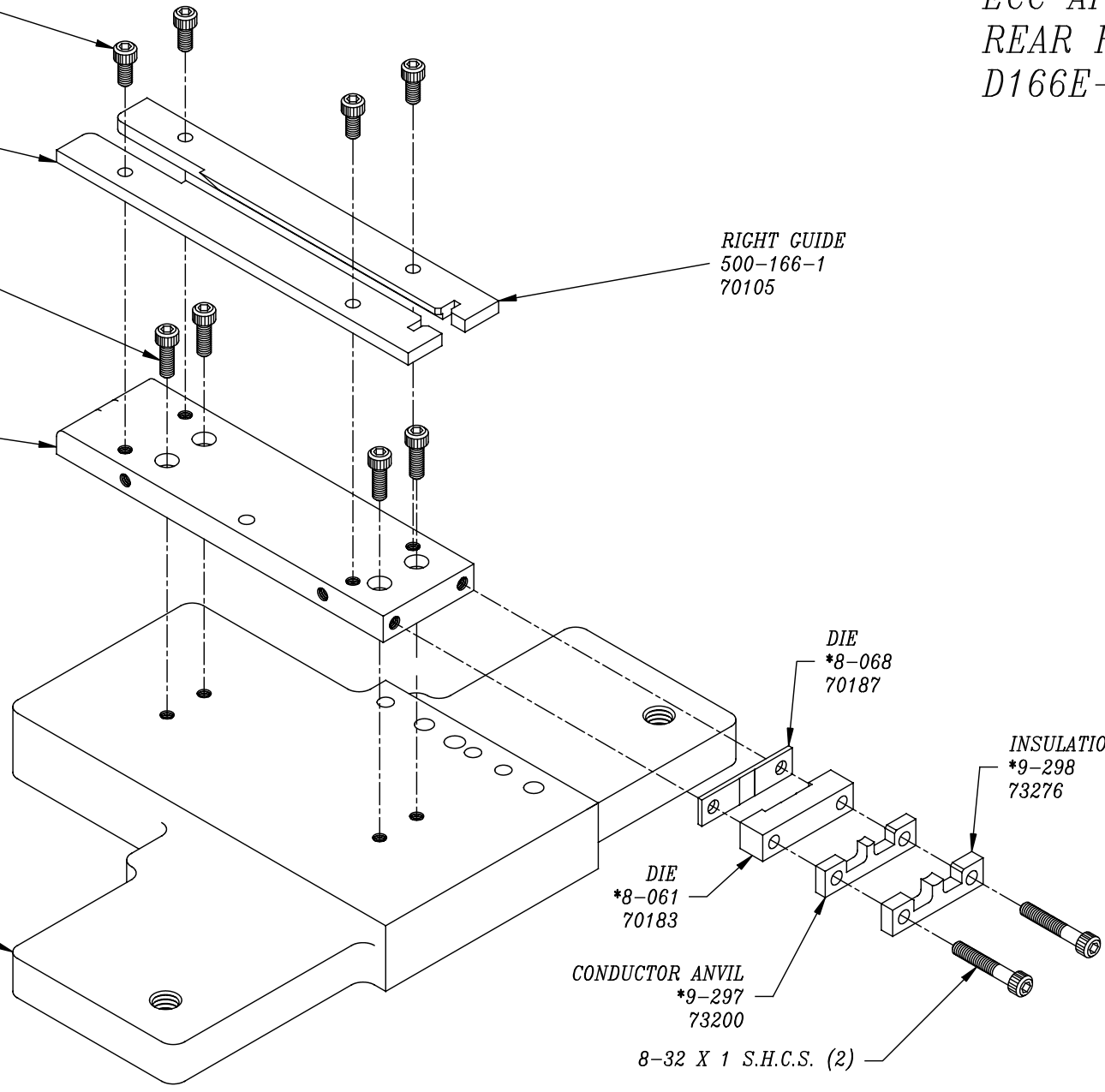
DIE
*8-068
70187

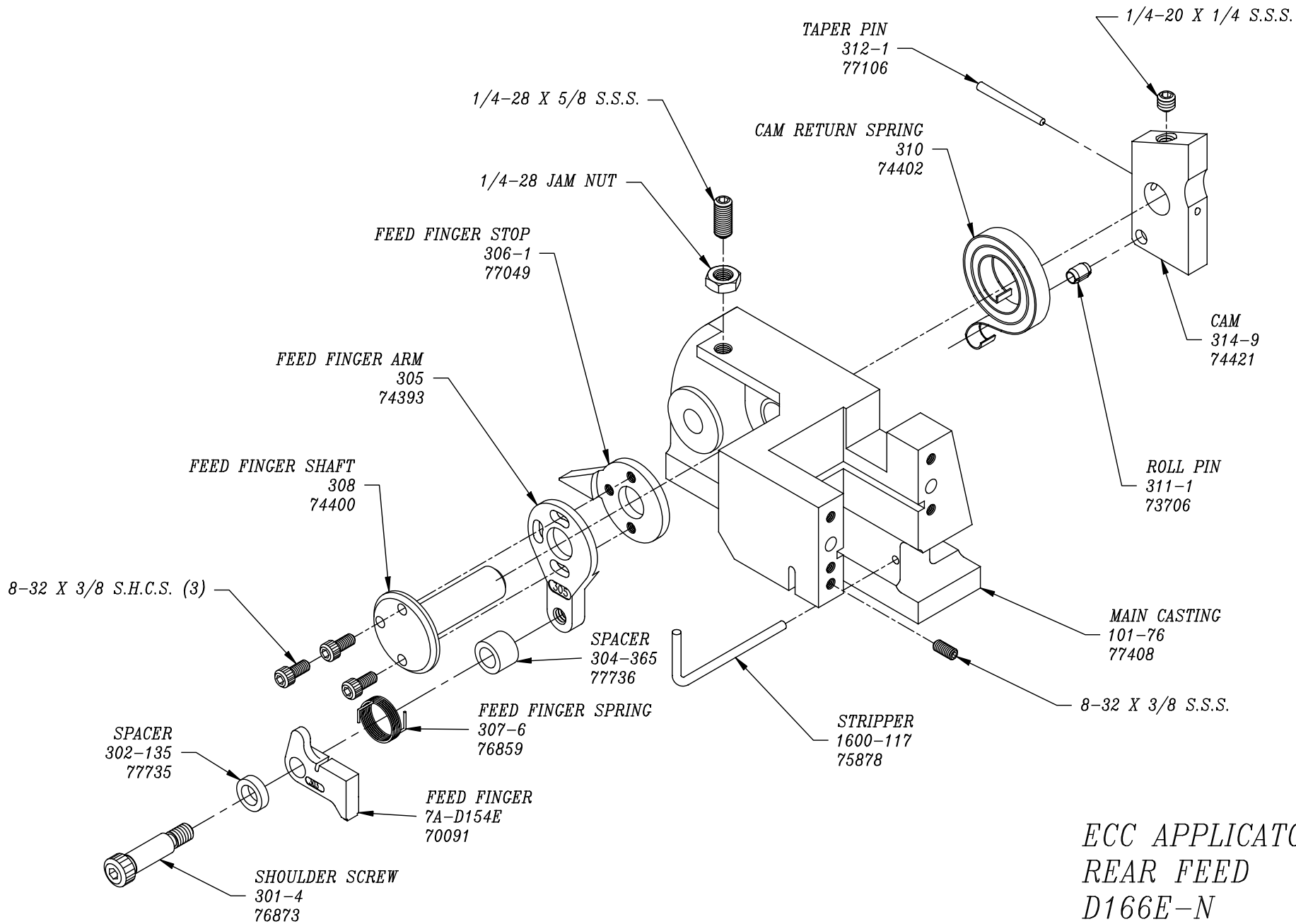
INSULATION ANVIL
*9-298
73276

DIE
*8-061
70183

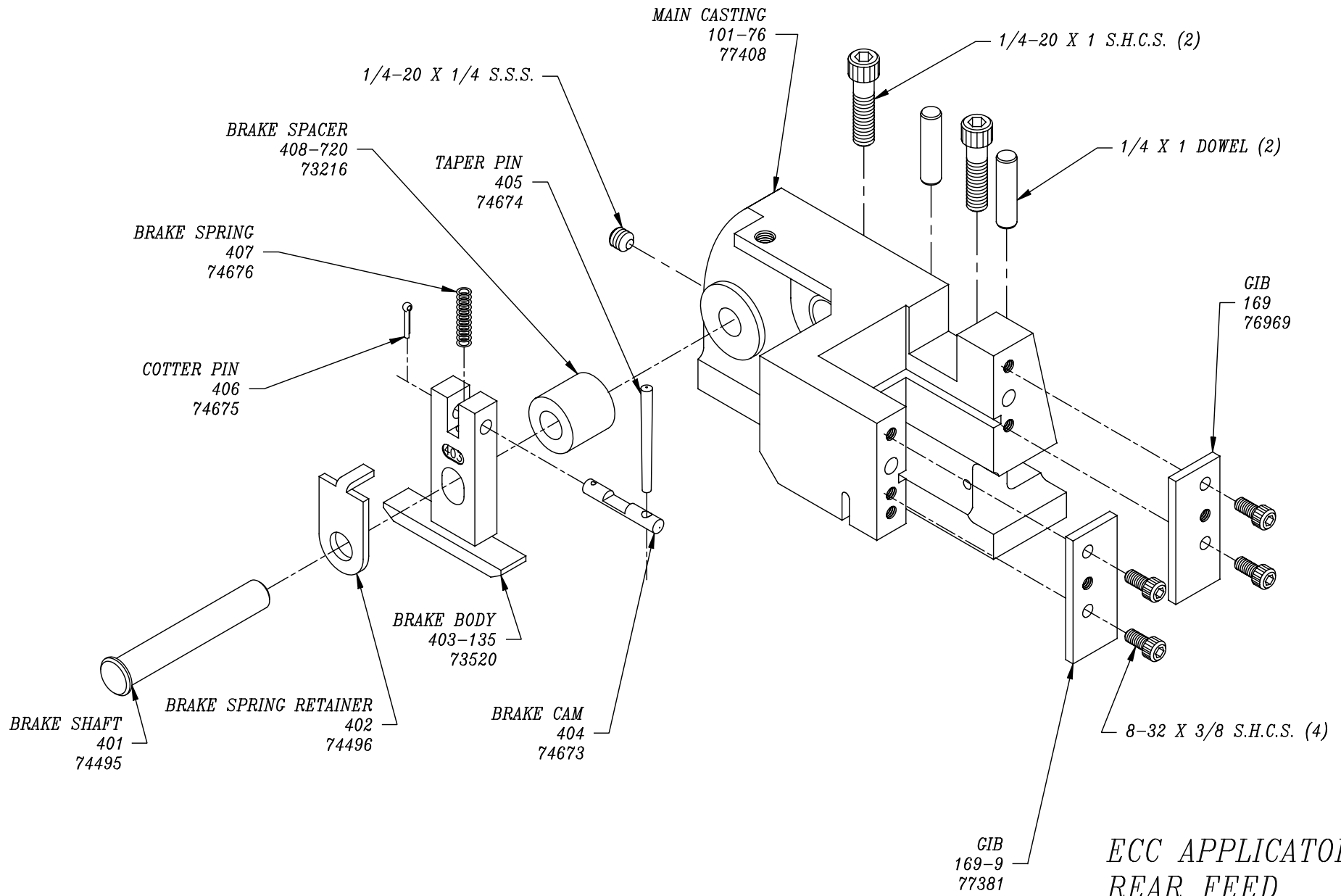
CONDUCTOR ANVIL
*9-297
73200

8-32 X 1 S.H.C.S. (2)

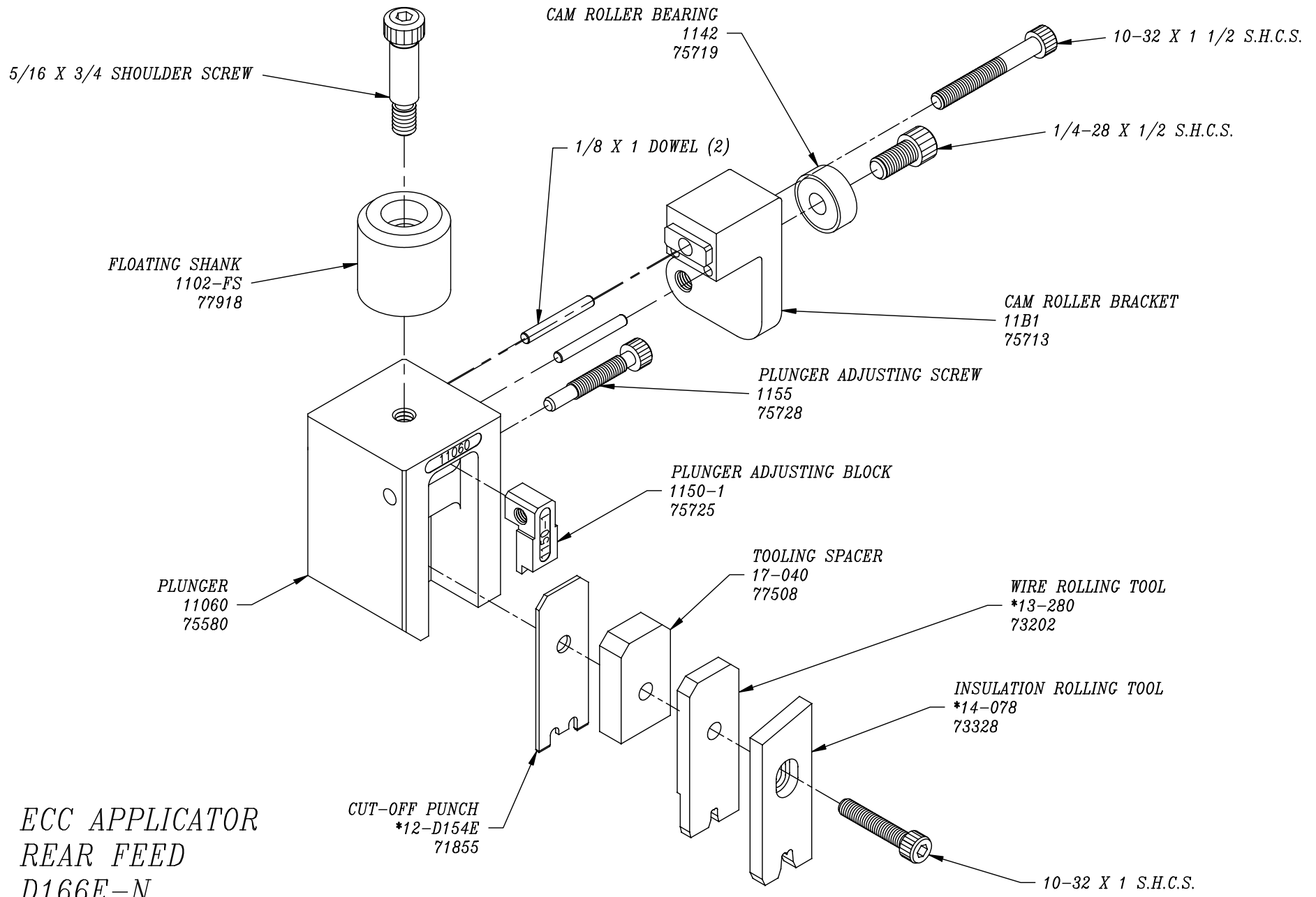




ECC APPLICATOR
 REAR FEED
 D166E-N

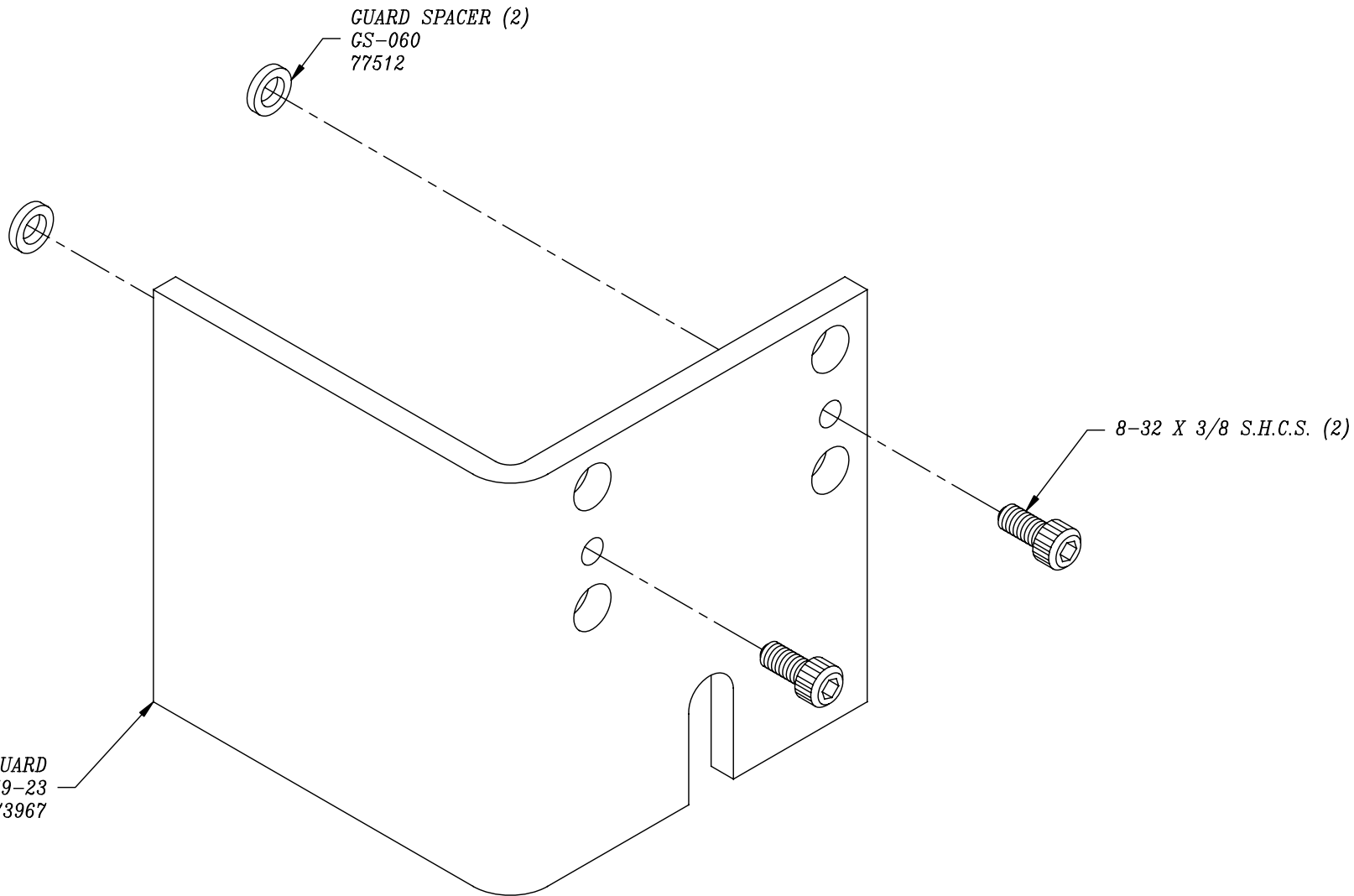


ECC APPLICATOR
 REAR FEED
 D166E-N



*ECC APPLICATOR
REAR FEED
D166E-N*

GUARD
179-23
73967



ECC APPLICATOR
REAR FEED
D166E-N