



**REFERENCE LIST:
UB2N
ECC APPLICATOR
BILL OF MATERIAL NUMBER
79888**

**WARNING !
NEVER OPERATE
THIS OR ANY
APPLICATOR
WITHOUT SAFETY
GUARD IN POSITION.**

PART CODE	PART NUMBER	QUANTITY	DESCRIPTION
75497	1102	(1)	PLUNGER
77918	1102-FS	(1)	FLOATING SHANK
		N/A	CUT-OFF SCREW
		N/A	ADJUST SCREW
		N/A	INSULATION BLOCK
75710	1125	(1)	CAM ROLLER BRACKET
75719	1142	(1)	CAM ROLLER BEARING
72134	*12A-UBS	(1)	CUT-OFF PUNCH
76925	*13-500	(1)	WIRE ROLLING TOOL
		N/A	INSULATION ROLLING TOOL
73281	17-024	(1)	SPACER
74410	314-2	(1)	CAM
74403	311	(1)	SPRING PIN
74404	312	(1)	CAM TAPER PIN
74402	310	(1)	CAM RETURN SPRING
73899	101	(1)	TOP CASTING
77632	188-4	(1)	GIBS
74675	406	(1)	COTTER PIN
74676	407	(1)	BRAKE SPRING
76934	408-.1165	(1)	BRAKE BUSHING
74674	405	(1)	TAPER PIN
74673	404	(1)	BRAKE CAM
74553	403-53	(1)	BRAKE BODY
74496	402	(1)	SPRING RETAINER
74495	401	(1)	BRAKE SHAFT
74396	306	(1)	FEED FINGER STOP
74393	305	(1)	FEED FINGER ARM
74400	308	(1)	FEED SHAFT
74392	304-.750	(1)	REAR SPACER
76743	307-16	(1)	SPRING
77704	7A-UB2N	(1)	FEED FINGER
		N/A	FRONT SPACER
76713	301-5	(1)	SHOULDER SCREW
74854	500-164	(1)	REAR GUIDE
75251	1000-50	(1)	FRONT GUIDE
74475	250-204	(1)	DIE PLATE

**NOTE: ITEMS MARKED WITH AN *
ARE HIGH WEAR ITEMS**



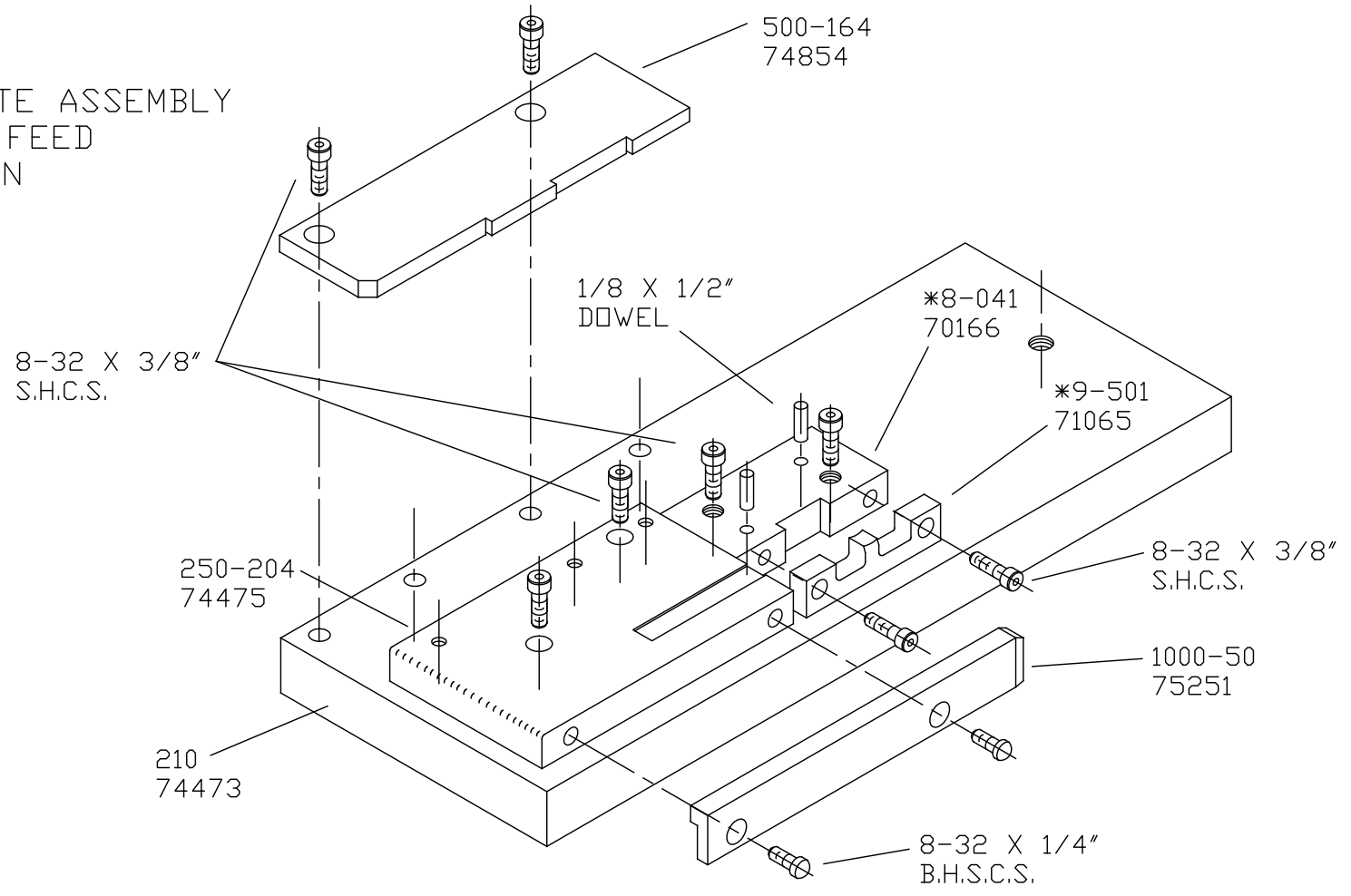
REFERENCE LIST:
UB2N
ECC APPLICATOR
BILL OF MATERIAL NUMBER
79888

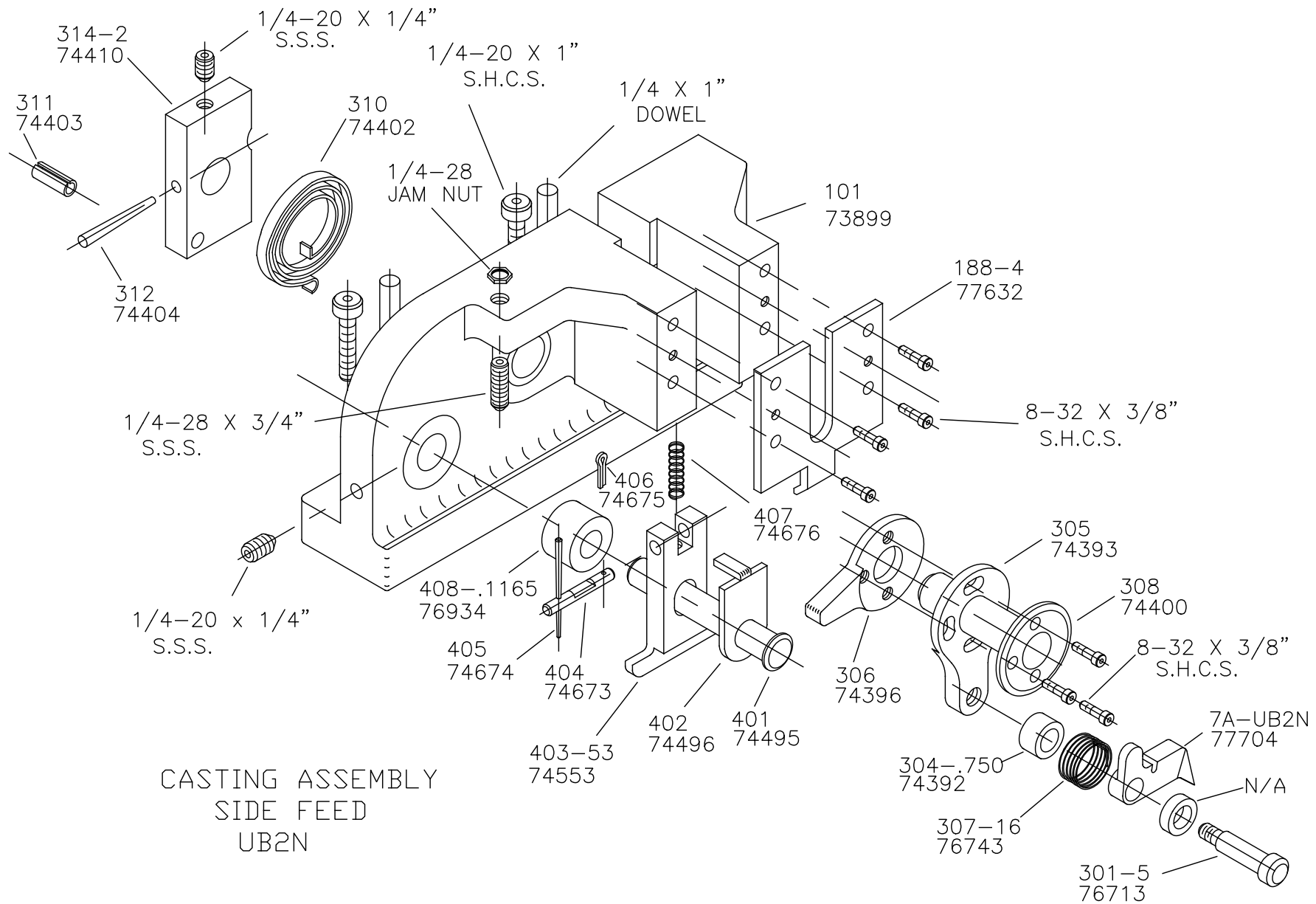
WARNING !
NEVER OPERATE
THIS OR ANY
APPLICATOR
WITHOUT SAFETY
GUARD IN POSITION.

PART CODE	PART NUMBER	QUANTITY	DESCRIPTION
-----------	-------------	----------	-------------

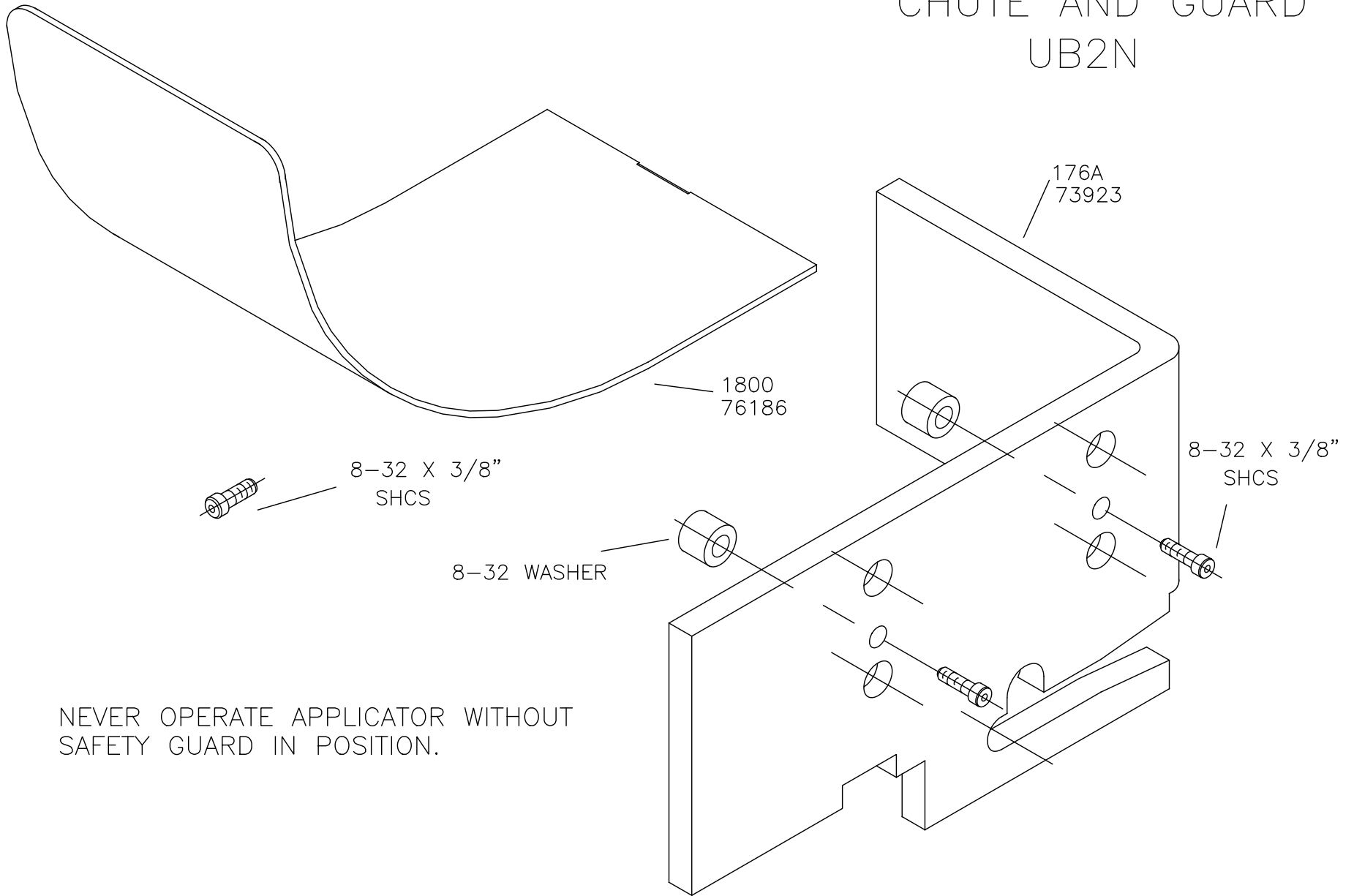
**NOTE: ITEMS MARKED WITH AN *
ARE HIGH WEAR ITEMS**

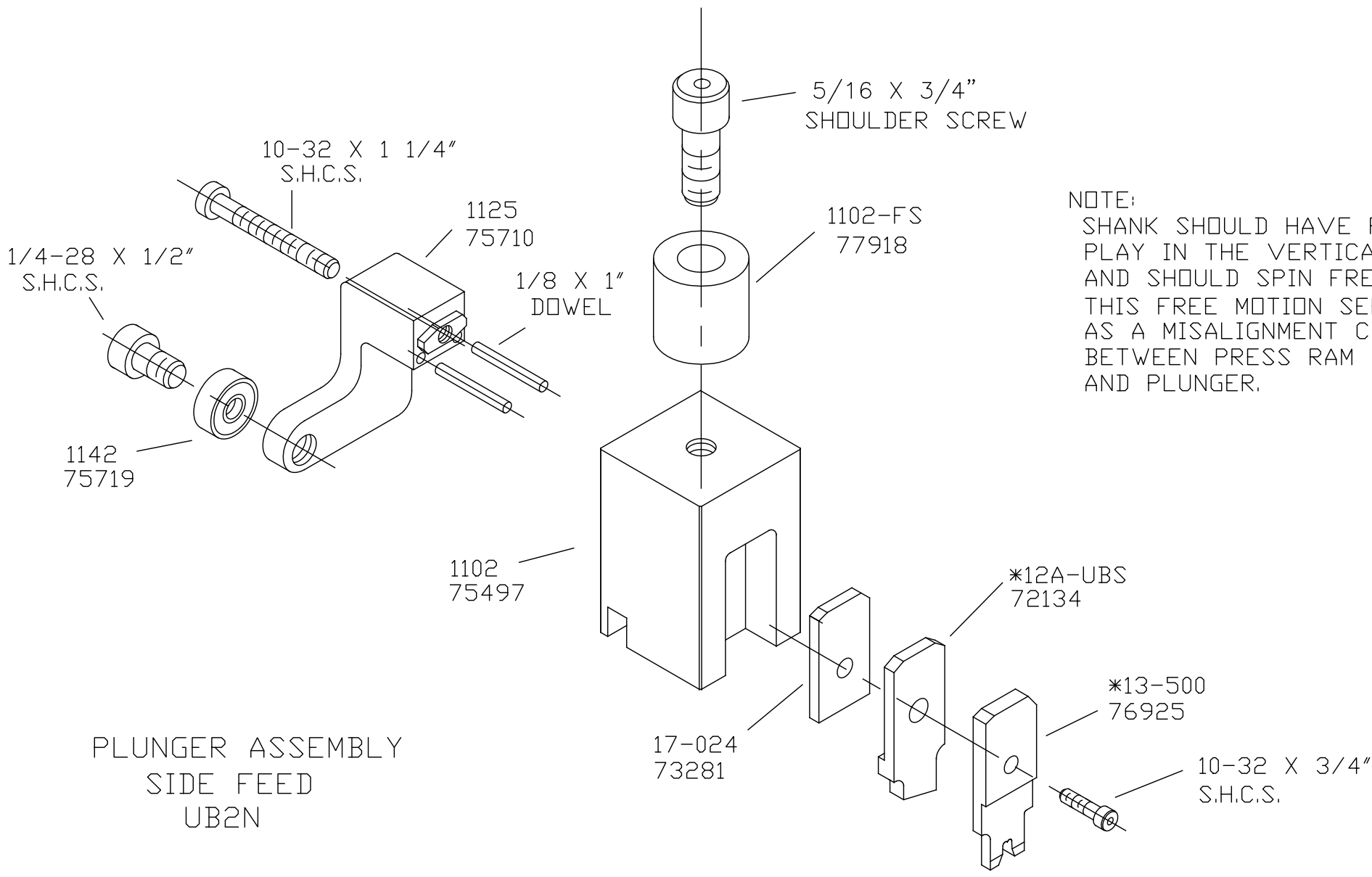
BASE PLATE ASSEMBLY
SIDE FEED
UB2N





CHUTE AND GUARD UB2N





NOTE:
 SHANK SHOULD HAVE FREE
 PLAY IN THE VERTICAL AXIS
 AND SHOULD SPIN FREELY.
 THIS FREE MOTION SERVES
 AS A MISALIGNMENT COUPLING
 BETWEEN PRESS RAM
 AND PLUNGER.

PLUNGER ASSEMBLY
 SIDE FEED
 UB2N

10-32 X 1 1/4"
 S.H.C.S.

1/4-28 X 1/2"
 S.H.C.S.

5/16 X 3/4"
 SHOULDER SCREW

1125
 75710

1/8 X 1"
 DOWEL

1102-FS
 77918

1142
 75719

1102
 75497

*12A-UBS
 72134

*13-500
 76925

17-024
 73281

10-32 X 3/4"
 S.H.C.S.