



**REFERENCE LIST:**  
**R361E**  
**ECC APPLICATOR**  
**BILL OF MATERIAL NUMBER**  
**79893**  
**REV A**

**WARNING !**  
**NEVER OPERATE**  
**THIS OR ANY**  
**APPLICATOR**  
**WITHOUT SAFETY**  
**GUARD IN POSITION.**

PART CODE	PART NUMBER	QUANTITY	DESCRIPTION
71912	11-288-FS	(1)	PLUNGER
77918	1102-FS	(1)	FLOATING SHANK
75728	1155	(1)	ADJUST SCREW
75724	1150		INSULATION BLOCK
71945	*12-RL361E-1	(1)	CUT-OFF PUNCH
78720	*13-S320-2	(1)	WIRE ROLLING TOOL
73166	*14-D462L	(1)	INSULATION ROLLING TOOL
75713	11B1	(1)	CAM ROLLER BRACKET
75719	1142	(1)	CAM ROLLER BEARING
74449	314-36	(1)	CAM BODY
77106	312-1	(1)	CAM TAPER PIN
74402	310	(1)	CLOCK SPRING
73706	311-1	(1)	ROLL PIN
73702	169-7	(2)	GIB
71914	1600-354	(1)	STRIPPER
71915	101-120	(1)	TOP CASTING
76802	408-710	(1)	BRAKE BUSHING
74676	407	(1)	SPRING
74675	406	(1)	COTTER PIN
74674	405	(1)	TAPER PIN
74673	404	(1)	BRAKE CAM
74577	403-77	(1)	BRAKE BODY
76862	402-1	(1)	BRAKE SPRING RETAINER
74495	401	(1)	BRAKE SHAFT
74396	306	(1)	FEED FINGER STOP
76801	305-3	(1)	FEED FINGER ARM
77419	304-325	(1)	REAR SPACER
74400	308	(1)	FEED SHAFT
76788	307-5	(1)	SPRING
77331	7A-R361	(1)	FEED FINGER
77603	302-050	(1)	FRONT SPACER
76858	301-3	(1)	SHOULDER SCREW
73673	10R-R361	(1)	RIGHT GUIDE
73672	10L-R361	(1)	LEFT GUIDE
74215	250-257	(1)	DIE PLATE
71069	*9-506	(1)	ANVIL
73935	202	(1)	BASE PLATE

**NOTE: ITEMS MARKED WITH AN \***  
**ARE HIGH WEAR ITEMS**



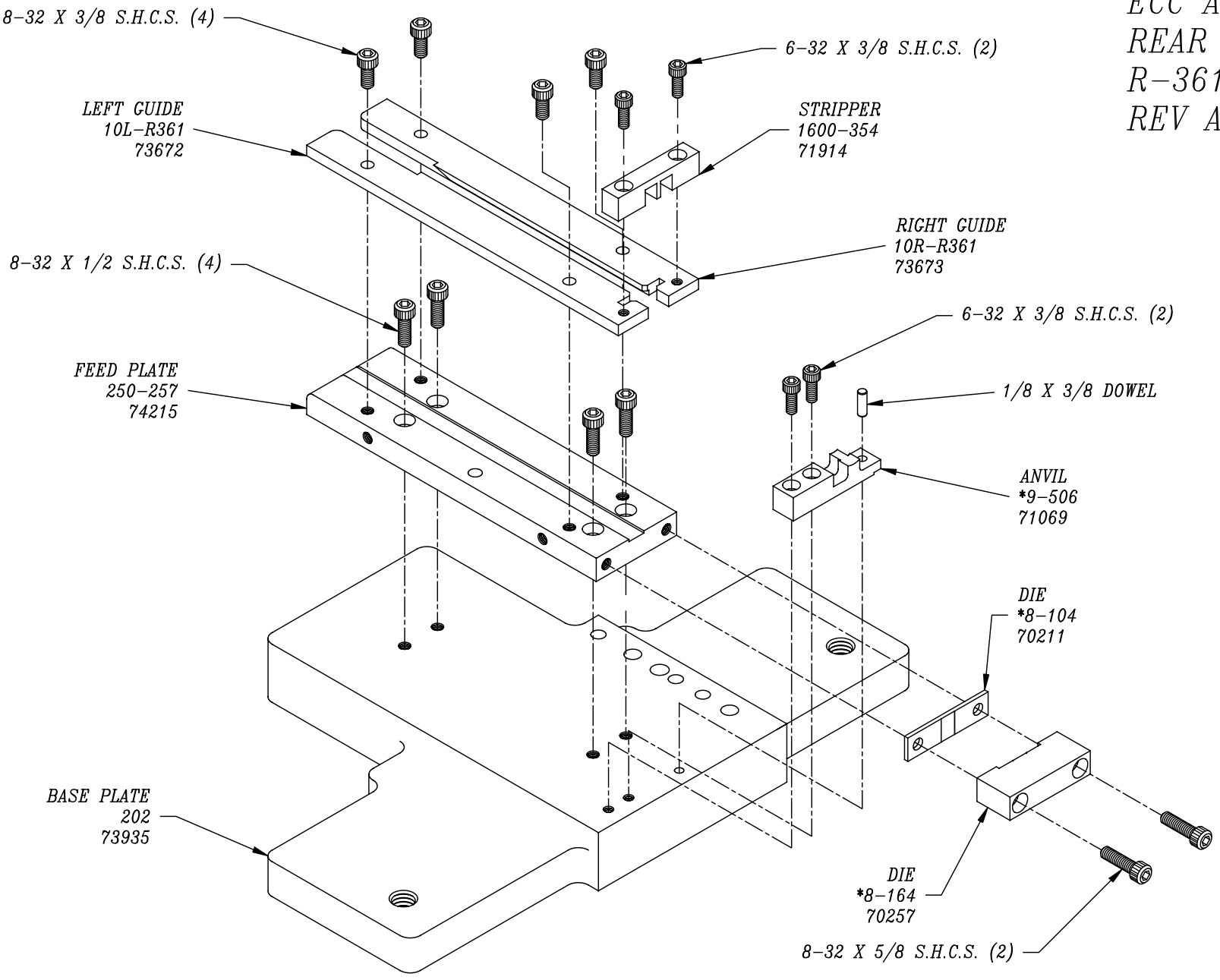
REFERENCE LIST:  
 R361E  
 ECC APPLICATOR  
 BILL OF MATERIAL NUMBER  
 79893  
 REV A

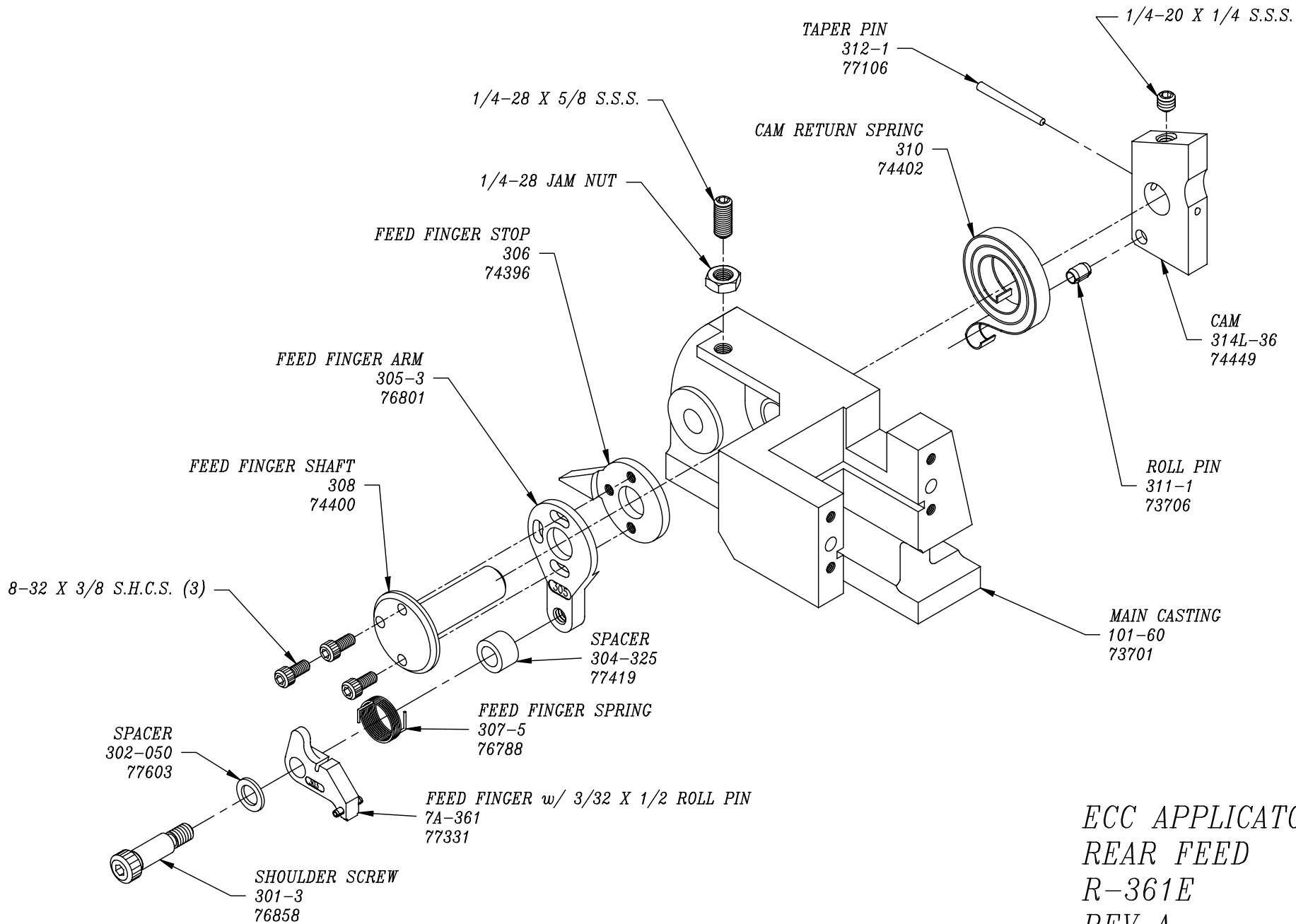
**WARNING !**  
**NEVER OPERATE**  
**THIS OR ANY**  
**APPLICATOR**  
**WITHOUT SAFETY**  
**GUARD IN POSITION.**

PART CODE	PART NUMBER	QUANTITY	DESCRIPTION
70211	*8-104	(1)	DIE
76800	116-250R	(1)	CASTING LIFTER
70257	*8-164	(1)	DIE
71913	12S-R361E	(1)	SPACER
76985	179-3	(1)	GUARD
		(4)	6-32 X 3/8" S.H.C.S.
		(13)	8-32 X 3/8" S.H.C.S.
		(4)	8-32 X 1/2" S.H.C.S.
		(2)	8-32 X 5/8" S.H.C.S.
		(1)	10-32 X 1" S.H.C.S.
		(1)	10-32 X 1 1/2" S.H.C.S.
		(2)	1/4-20 X 1/4" S.S.S.
		(2)	1/4-20 X 1" S.H.C.S.
		(2)	1/4-28 JAM NUT
		(1)	1/4-28 X 1/2" S.H.C.S.
		(1)	1/4-28 X 5/8" S.S.S.
		(1)	5/16 X 3/4" SHOULDER SCREW
		(1)	1/8 X 3/8" DOWEL
		(2)	1/8 X 1" DOWEL
		(2)	1/4 X 1" DOWEL
	McMaster Carr #98407A118	(2)	E-STYLE RETAINING RING

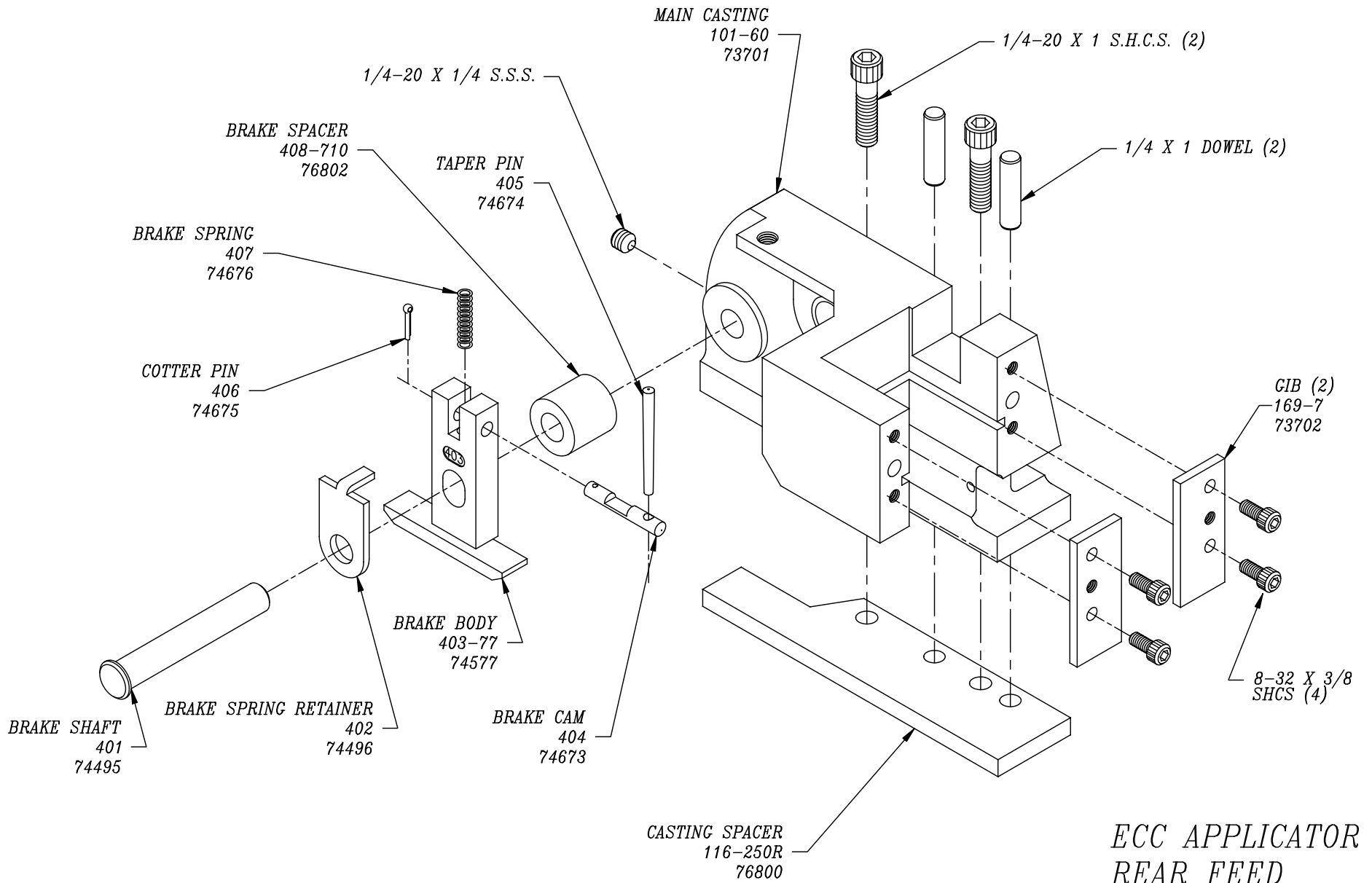
**NOTE: ITEMS MARKED WITH AN \*  
 ARE HIGH WEAR ITEMS**

*ECC APPLICATOR  
REAR FEED  
R-361E  
REV A*

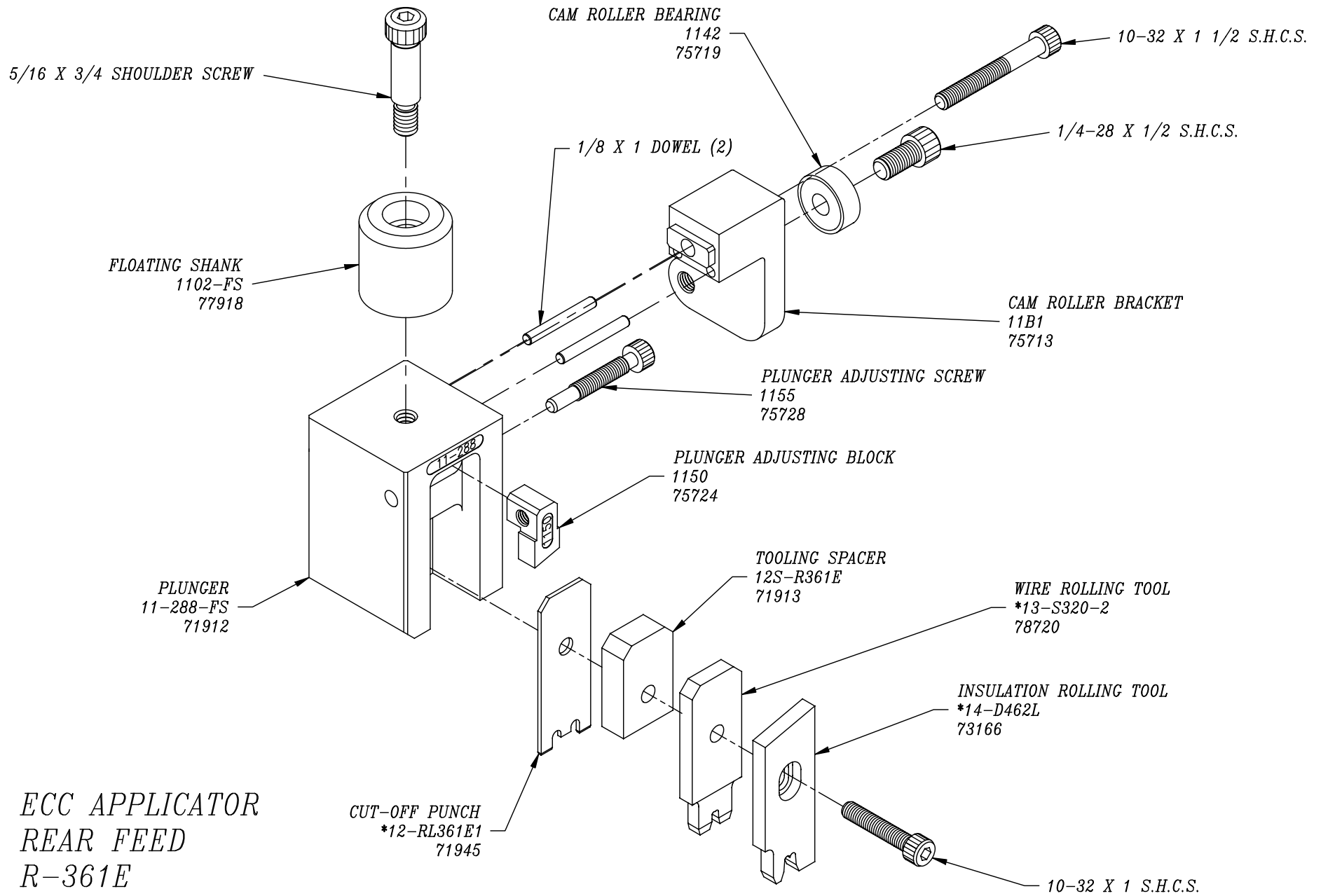




ECC APPLICATOR  
 REAR FEED  
 R-361E  
 REV A

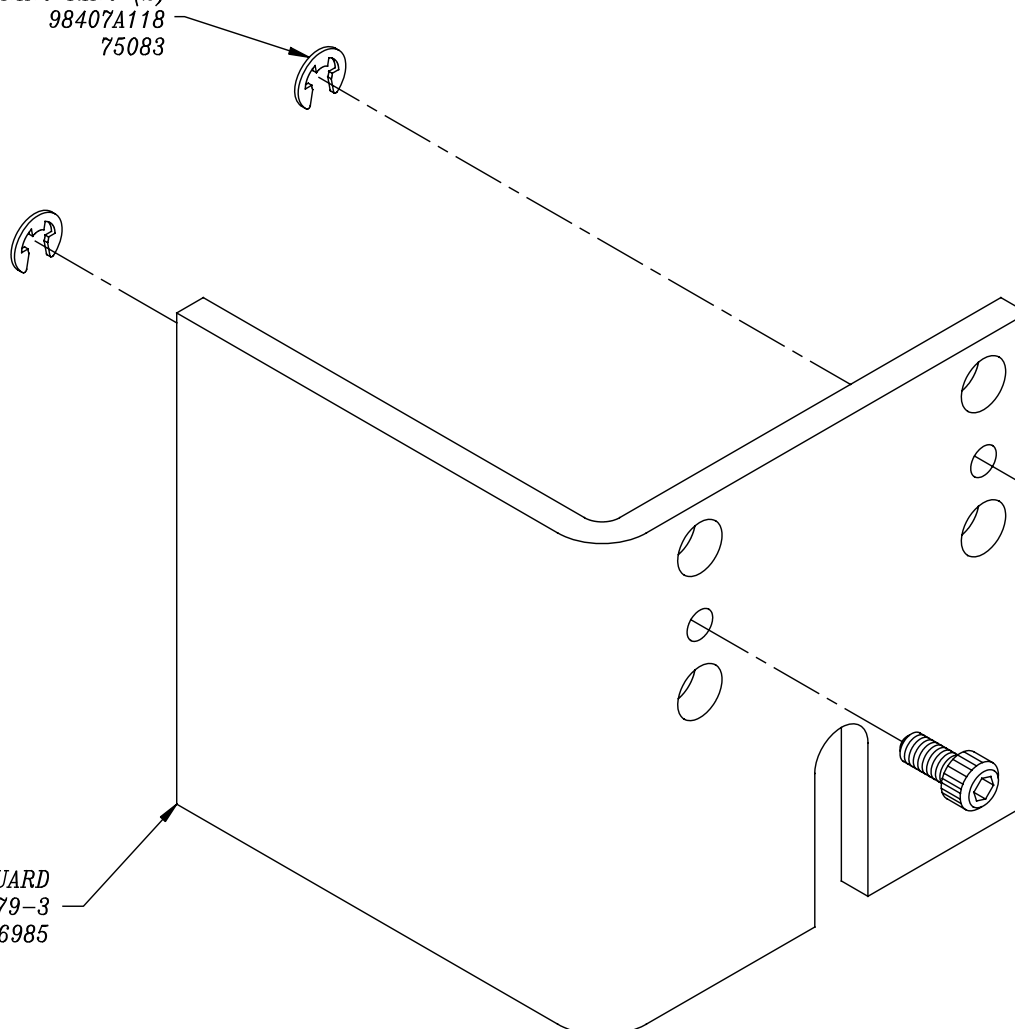


ECC APPLICATOR  
 REAR FEED  
 R-361E  
 REV A



ECC APPLICATOR  
REAR FEED  
R-361E  
REV A

*E-STYLE RETAINING RING (2)*  
98407A118  
75083



*GUARD*  
179-3  
76985

8-32 X 3/8 S.H.C.S. (2)

*ECC APPLICATOR  
REAR FEED  
R-361E  
REV A*