



**REFERENCE LIST:
R360E, R363E
ECC APPLICATOR
BILL OF MATERIAL NUMBER
79895**

**WARNING !
NEVER OPERATE
THIS OR ANY
APPLICATOR
WITHOUT SAFETY
GUARD IN POSITION.**

PART CODE	PART NUMBER	QUANTITY	DESCRIPTION
75659	11-134-FS	(1)	PLUNGER
77918	1102-FS	(1)	FLOATING SHANK
75728	1155	(1)	ADJUST SCREW
75724	1150	(1)	INSULATION BLOCK
		N/A	CUT-OFF PUNCH DRIVER
71945	*12-RL361E-1	(1)	CUT-OFF PUNCH
72662	*13-S126	(1)	WIRE ROLLING TOOL
		N/A	TOOL RETAINER
73075	*14-S120-1	(1)	INSULATION ROLLING TOOL
75713	11B1	(1)	CAM ROLLER BRACKET
75719	1142	(1)	CAM ROLLER BEARING
74449	314-36	(1)	CAM BODY
77106	312-1	(1)	CAM TAPER PIN
74402	310	(1)	CLOCK SPRING
73706	311-1	(1)	ROLL PIN
73704	169-14	(1)	LEFT GIB
73702	169-7	(1)	RIGHT GIB
75878	1600-117	(1)	STRIPPER
73701	101-60	(1)	TOP CASTING
76802	408-710	(1)	BRAKE BUSHING
74676	407	(1)	SPRING
74675	406	(1)	COTTER PIN
74674	405	(1)	TAPER PIN
74673	404	(1)	BRAKE CAM
74577	403-77	(1)	BRAKE BODY
76862	402-1	(1)	BRAKE SPRING RETAINER
74495	401	(1)	BRAKE SHAFT
74396	306	(1)	FEED FINGER STOP
76801	305-3	(1)	FEED FINGER ARM
77419	304-325	(1)	REAR SPACER
74400	308	(1)	FEED SHAFT
76788	307-5	(1)	SPRING
77331	7A-R361	(1)	FEED FINGER
77603	302-050	(1)	FRONT SPACER
76858	301-3	(1)	SHOULDER SCREW
73673	10R-R361	(1)	RIGHT GUIDE
73672	10L-R361	(1)	LEFT GUIDE

**NOTE: ITEMS MARKED WITH AN *
ARE HIGH WEAR ITEMS**

*ECC APPLICATOR
REAR FEED
R-360E, R-363E*

8-32 X 3/8 S.H.C.S. (4)

LEFT GUIDE
10L-R361
73672

8-32 X 1/2 S.H.C.S. (4)

FEED PLATE
250-257
74215

BASE PLATE
202
73935

RIGHT GUIDE
10R-R361
73673

6-32 X 3/8 S.H.C.S. (2)

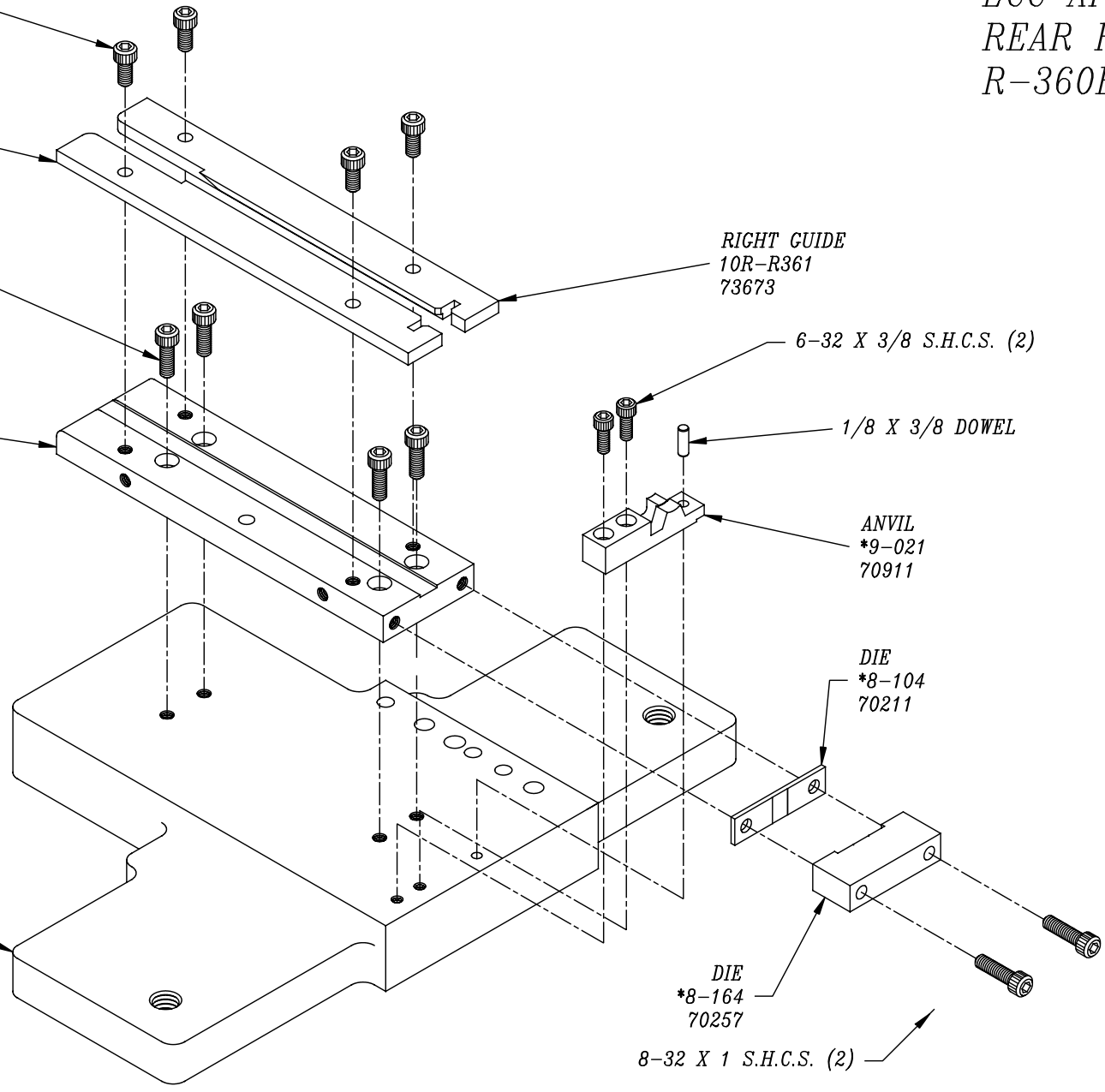
1/8 X 3/8 DOWEL

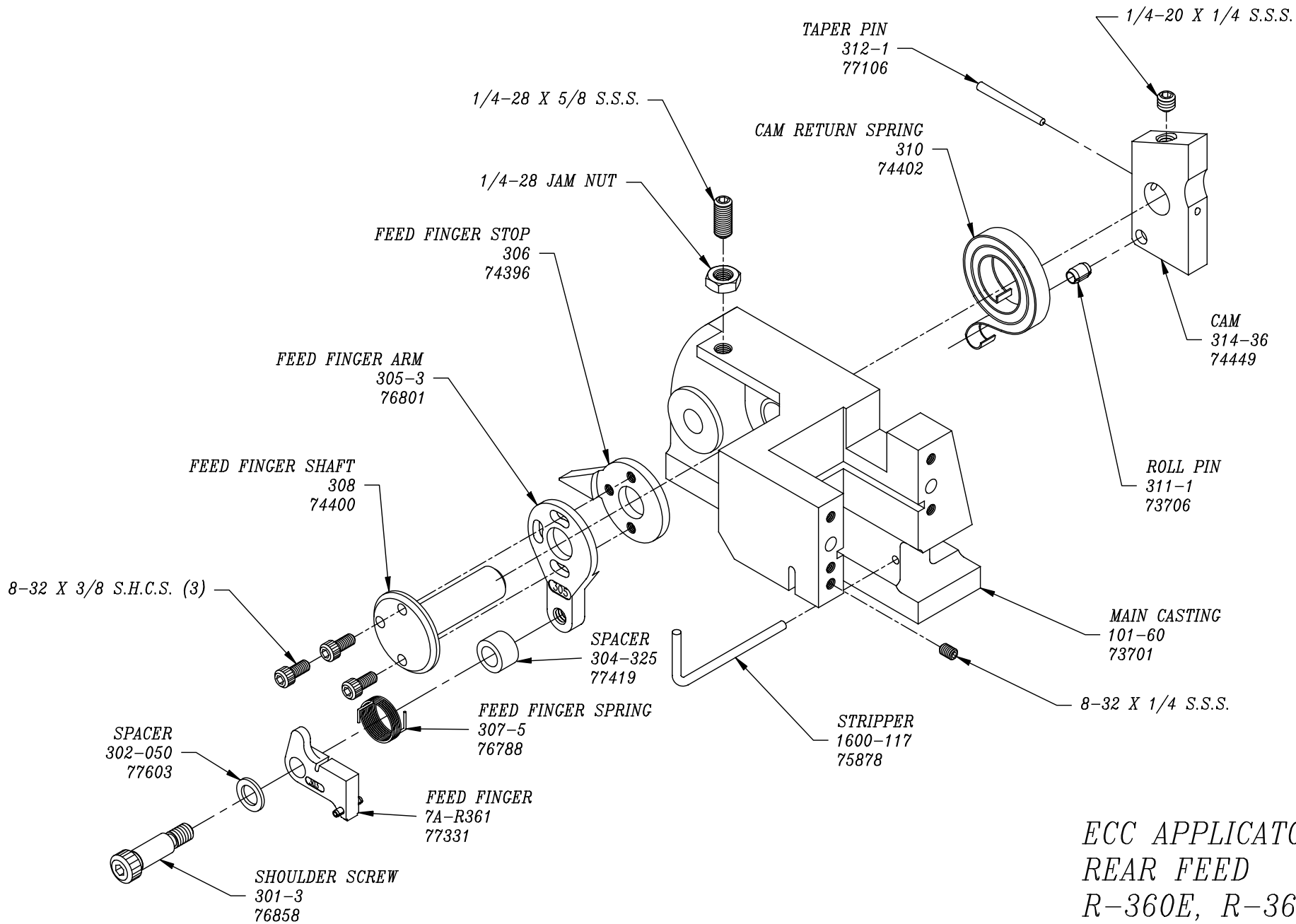
ANVIL
*9-021
70911

DIE
*8-104
70211

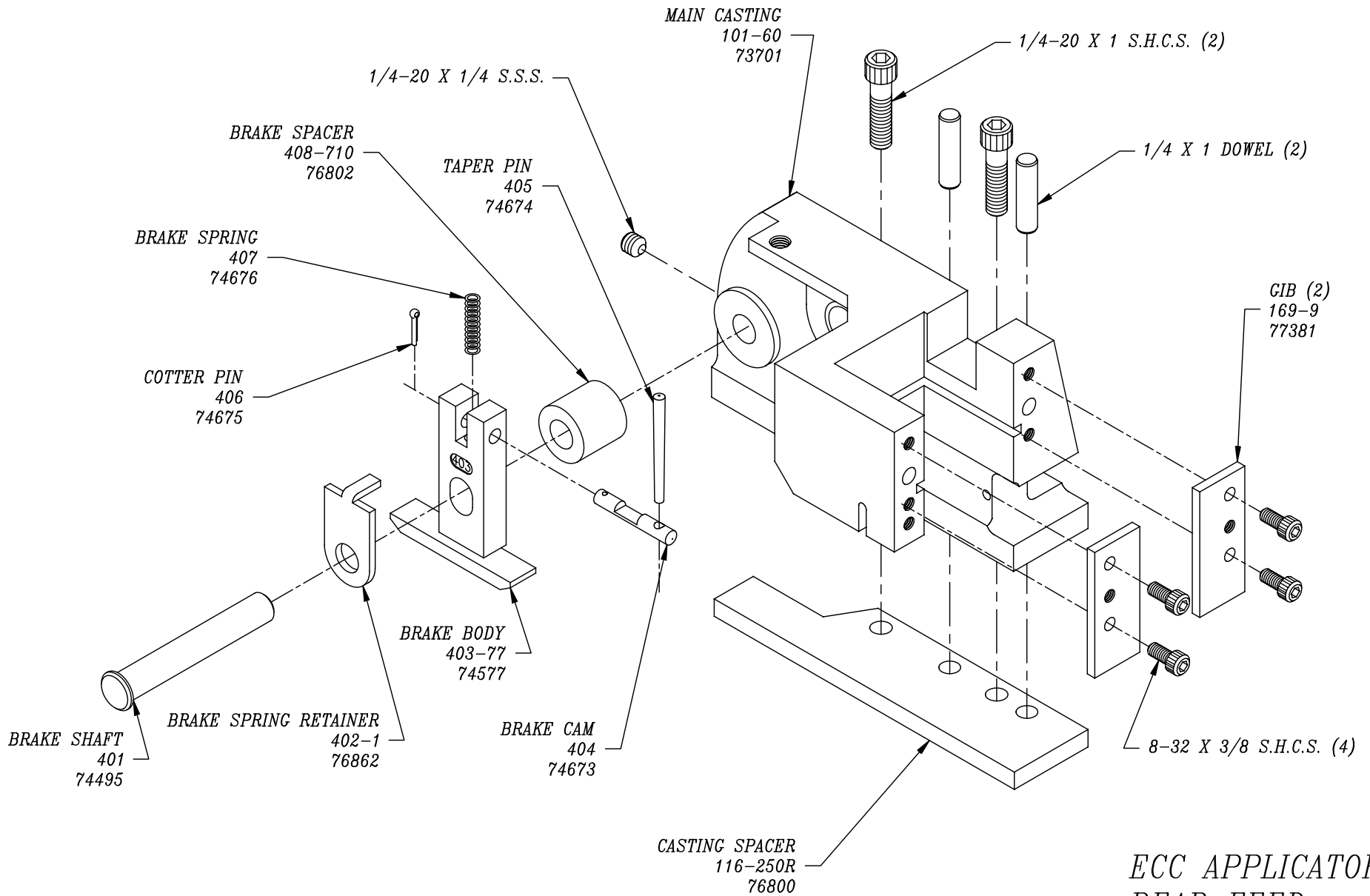
DIE
*8-164
70257

8-32 X 1 S.H.C.S. (2)

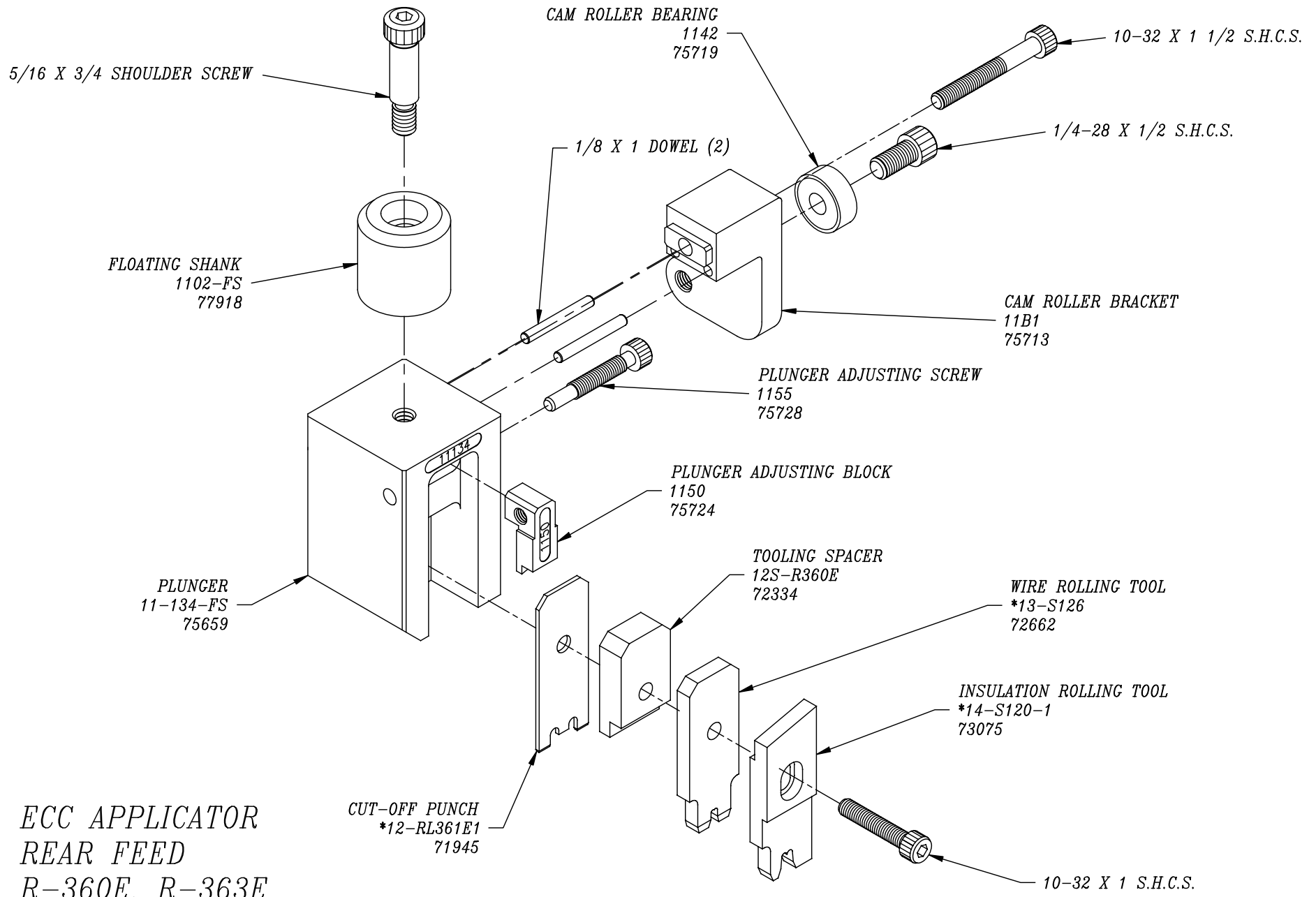




ECC APPLICATOR
 REAR FEED
 R-360E, R-363E

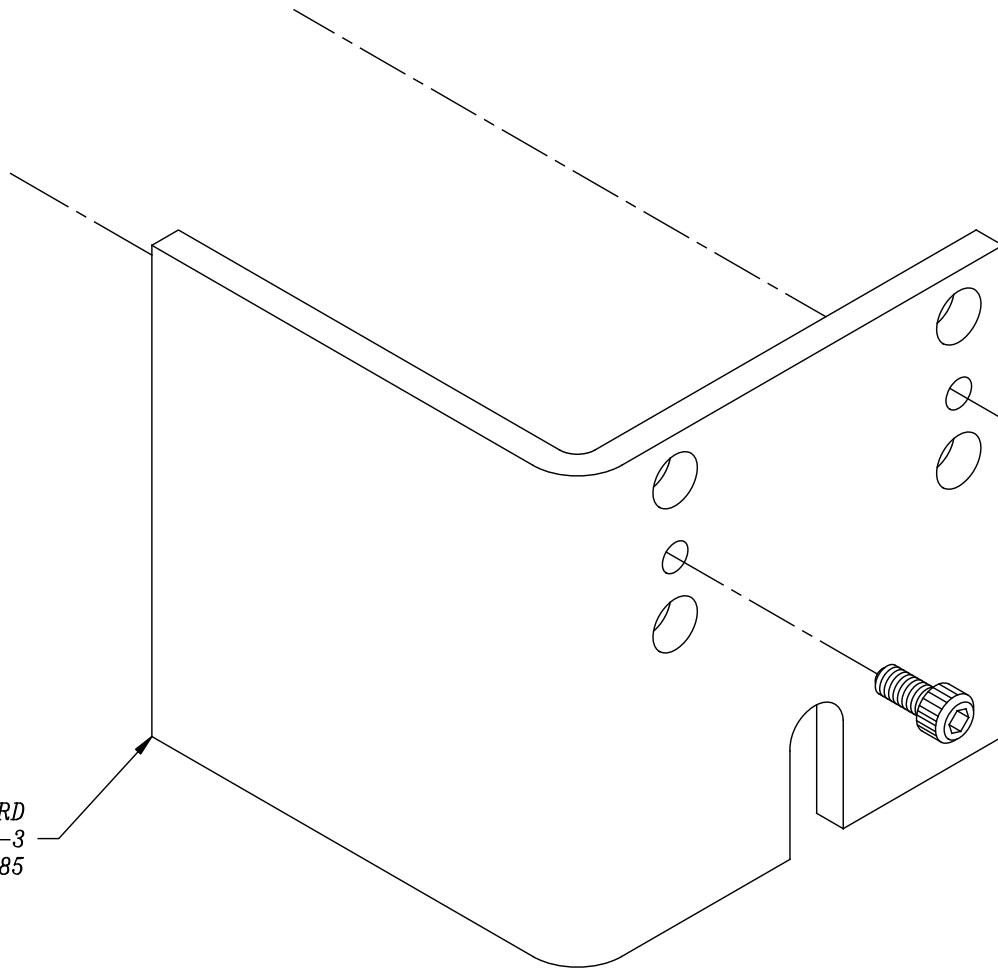


ECC APPLICATOR
 REAR FEED
 R-360E, R-363E

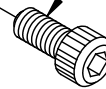


*ECC APPLICATOR
REAR FEED
R-360E, R-363E*

GUARD
179-3
76985



8-32 X 3/8 S.H.C.S. (2)



ECC APPLICATOR
REAR FEED
R-360E, R-363E