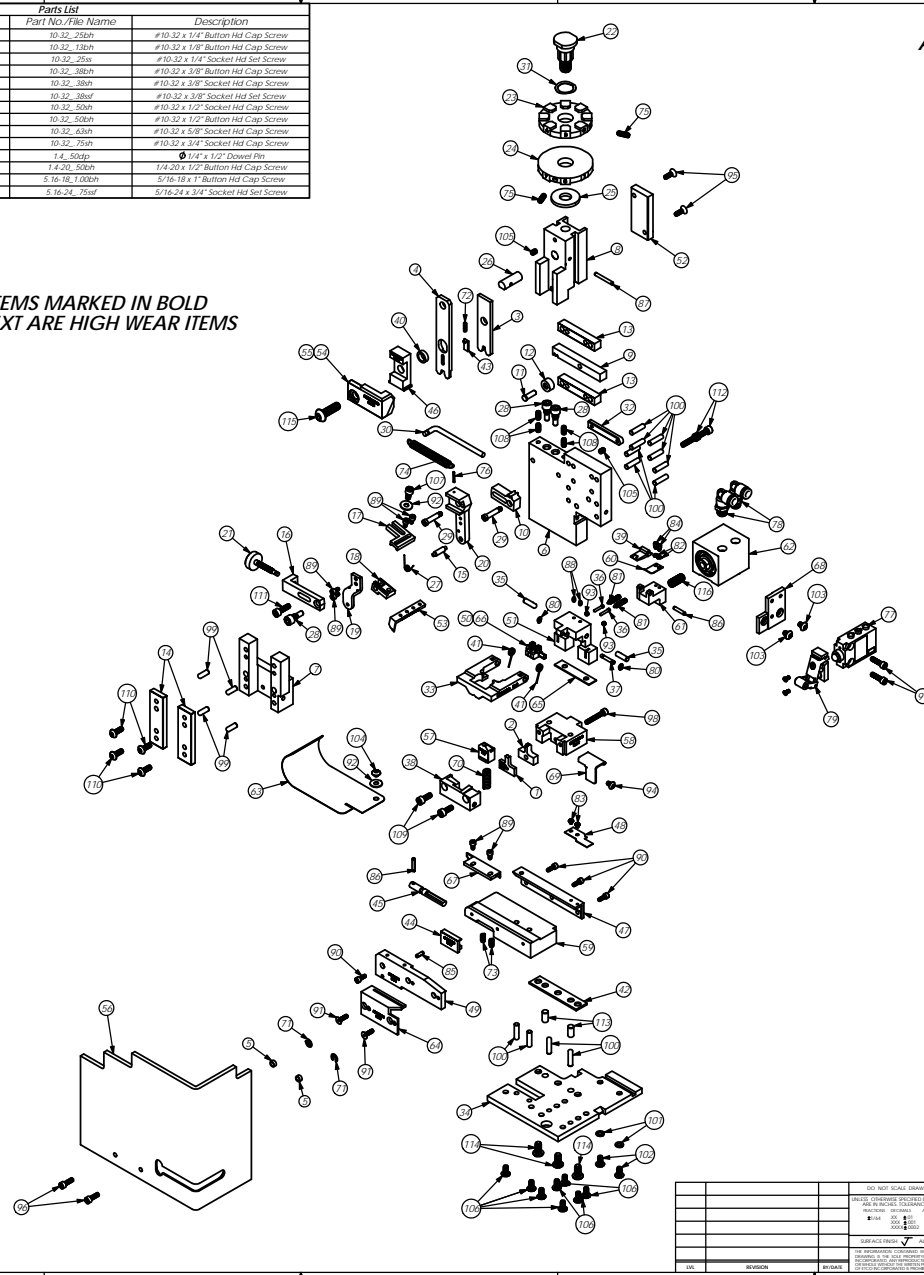


Parts List				Parts List					
Item	Part Code	QTY	Part No./File Name	Description	Item	Part Code	QTY	Part No./File Name	Description
1	70753	1	9A-4007	Insulation Anvil	103		2	10-32_25sh	#10-32 x 1/4" Button Hd Cap Screw
2	70750	1	9-4807	Wire Anvil	104		1	10-32_25sh	#10-32 x 1/8" Button Hd Cap Screw
3	70748	1	13-4007	Wire Rolling Tool	105	63054	2	10-32_25sh	#10-32 x 1/8" Socket Hd Set Screw
4	70749	1	14-4007	Insulation Rolling Tool	106	78993	8	10-32_38sh	#10-32 x 3/8" Button Hd Cap Screw
5	73888	2	GS 125	Guard Spacer	107	70110	1	10-32_38sh	#10-32 x 3/8" Socket Hd Cap Screw
6	71484	1	MX2A-5.1	Mounting Frame	108		4	10-32_38sh	#10-32 x 3/8" Socket Hd Set Screw
7	71030	1	MX2B-5	Ranger Frame	109	63056	2	10-32_50sh	#10-32 x 1/2" Socket Hd Cap Screw
8	74343	1	MX3	Beam	110		4	10-32_50sh	#10-32 x 1/2" Button Hd Cap Screw
9	74438	1	MX5-5	Cam Bracket	111	70293	1	10-32_63sh	#10-32 x 5/8" Button Hd Cap Screw
10	74346	1	MX6-1	Gear Arm	112	63542	2	10-32_38sh	#10-32 x 3/8" Socket Hd Cap Screw
11	74347	1	MX7	Cam Pin	113		2	1.4_50dtp	1/4" x 1/2" Dowel Pin
12	74350	1	MX8	Cam Baler	114		3	1.4_20_50sh	1/4-20 x 1/2" Button Hd Cap Screw
13	74351	2	MX10-S	Back Pad	115	63055	1	5-16-18_100sh	5/16-18 x 1" Button Hd Cap Screw
14	74352	2	MX11	Gift	116		1	5-16-24_75sh	5/16-24 x 3/4" Socket Hd Set Screw
15	74356	1	MX12	Feed Finger Pivot Pin					
16	74360	1	MX13	Adjusting Bar					
17	76988	1	MX14-1S	Feed Finger Arm					
18	76874	1	MX15-1S	Feed Finger Guide					
19	74364	1	MX16	Reliance					
20	71495	1	MX19-S.1	Swing Arm					
21	74376	1	MX25	Stroke Adjustment Screw					
22	74407	1	MX31	Mounting Post					
23	72103	1	MX34-E	Reliance					
24	74409	1	MX35	Insulation Dial					
25	74411	1	MX36	Dial Spacer					
26	74412	1	MX44	Locating Dowel					
27	74416	1	MX45-S	Feed Finger Spring					
28	74419	3	MX50	Safety Pivot Pin					
29	71493	2	MX52-S.1	Pivot Pin					
30	74614	1	MX90-S	Spring Bracket					
31	72310	1	MX104	Wire Disc Spring					
32	71678	1	MX105	Pivot Pin Plate					
33	72167	1	MX301-1/ID-S	Latching Gate					
34	72261	1	MX302-1/ID-S	Base Plate					
35	76563	2	MX305-1/ID-S	Hinge Pin					
36	76564	2	MX305-1/ID-S	Pin					
37	76567	1	MX308-1/ID-S	Latch Pivot Pin					
38	78936	1	MX309-4-1/ID-S	Cut-off Keeper					
39	76573	1	MX314-1/ID-S	Latch					
40	76574	1	MX315-1/ID-S	Insulation Tool Spacer					
41	76575	2	MX316-1/ID-S	Latch Spring					
42	76576	1	MX317-1/ID-S	Base Plate Spacer					
43	76578	1	MX318-1/ID-S	Knock-off					
44	76579	1	MX320-1/ID-S	Brake					
45	76580	1	MX321-1/ID-S	Brake Actuator					
46	76583	1	MX324-1/ID-S	Cut-off Pad Pusher					
47	72937	1	MX327-1/ID-S	Left Feed Rail					
48	76587	1	MX328-1/ID-S	Head Down Spring					
49	76588	1	MX329-1/ID-S	Right Feed Rail					
50	76590	1	MX331-1/ID-S	Latch (Automatic)					
51	76591	1	MX332-1/ID-S	Support					
52	76598	1	MX335-1/ID-S	Cam					
53	76661	1	MX337-1/ID-S	Feed Finger					
54	70720	1	MX338-1/ID-S	Arm Switch Cam (1.5/8" Stroke)					
55	72233	1	MX338-1-1/ID-S	Arm Switch Cam (1.1/8" Stroke)					
56	70745	1	MX339-1/ID-S	Guard					
57	78702	1	MX340-6-1/ID-S	Cut-off Pad					
58	70765	1	MX341-1/ID-S	Die Holder					
59	70766	1	MX342-1/ID-S	Feed Plate					
60	72340	1	MX344-2-1/ID-S	Lead Spring					
61	72340	1	MX345-1-1/ID-S	Insulation Pusher					
62	72099	1	MX348-1/ID-S	S50 Stroke Slide Cylinder					
63	72100	1	MX349-1/ID-S	Stock Chute					
64	72101	1	MX350-1/ID-S	Feed Finger Retainer					
65	72102	1	MX351-1/ID-S	Support Spacer					
66	72172	1	MX352-1/ID-S	Latch/Wire Stop					
67	72893	1	MX357-1/ID-S	Bracket					
68	78233	1	MX359-1-1/ID-S	Voice Measuring Probe					
69	78835	1	MX360-1/ID-S	Scrap Retainer					
70	72350	1	5-047x1.000	Compression Spring					
71	75683	2	Invg 3105-18	External Retaining Ring					
72	72316	1	LC-0224-4	Compression Spring					
73	78881	2	LC-0298-3-M	Compression Spring					
74	74611	1	LE-037CD-6	Extension Spring					
75	70739	2	McMaster-Carr #3126A53	Spring Plunger					
76	74447	1	McMaster-Carr #80298A109	Expansion Pin 1/16 x 1/2"					
77	78717	1	Parker #PKCM601A10	3-Way Valve					
78	72352	2	Pisco PL250NHU	Ø1/4" x 1/8" NPT Elbow Fitting, White					
79	78716	1	Telemecanique #KCM24	Roller Switch					
80	63200	2	Trane #SS5-12	Rotating Ring					
81	63201	2	Vier #PH-S1-P	Spring Plunger					
82	63202	2	4lw	#4 Lock Washer					
83	63203	2	4-40_13sh	#4-40 x 1/8" Button Hd Cap Screw					
84	63204	2	4-40_16sh	#4-40 x 5/32" Socket Hd Cap Screw					
85	63205	1	1.8_38sp	1/8" x 3/8" Roll Pin					
86	63203	2	1.8_43sp	1/8" x 5/8" Roll Pin					
87	62040	1	1.8_100sp	1/8" x 1" Roll Pin					
88	63206	1	5-40_19sh	#5-40 x 3/16" Socket Hd Set Screw					
89	63207	4	6-32_25sh	#6-32 x 1/4" Socket Hd Cap Screw					
90	63209	4	6-32_38sh	#6-32 x 3/8" Socket Hd Cap Screw					
91	63057	2	6-32_50sh	#6-32 x 1/2" Flat Hd Cap Screw					
92	63210	2	8-32_13sh	#8-32 x 1/4" Socket Hd Set Screw					
93	63211	2	8-32_25sh	#8-32 x 1/4" Button Hd Cap Screw					
94	63212	2	8-32_50sh	#8-32 x 1/2" Flat Hd Cap Screw					
95	63214	2	8-32_50sh	#8-32 x 1/2" Socket Hd Cap Screw					
96	63164	2	8-32_63sh	#8-32 x 1/2" Socket Hd Cap Screw					
97	63162	1	8-32_100sh	#8-32 x 1" Socket Hd Cap Screw					
98	63213	1	8-32_100sh	#8-32 x 1" Socket Hd Cap Screw					
99	63158	4	3-16_50dtp	3/16" x 1/2" Dowel Pin					
100	63470	12	10w	10 Lockwashers					
101	78917	2							
102	63531	2	10-24_38sh	#10-24 x 3/8" Button Hd Cap Screw					

NOTE: ITEMS MARKED IN BOLD TEXT ARE HIGH WEAR ITEMS



Assembly Drawing and Bill of Materials

Applicator Type: MX ITD Side
Terminal: PM227N (Ø.100-Ø.135 Insulation)
B.O.M. #: 79973
Serial #:

Section 5

NOTE:
(1) Items marked in bold text are high wear items.
(2) Use OEM replacement tooling only.
(3) Recommended machine speed for automatic equipment is a maximum of 3500 parts per hour.

REV	REVISION	ISSUED BY	DATE

<input type="checkbox"/> DO NOT SCALE DRAWING <input type="checkbox"/> ALL DIMENSIONS SHOWN <input type="checkbox"/> ALL DIMENSIONS UNLESS OTHERWISE SPECIFIED ARE IN INCHES <input type="checkbox"/> FINISH: UNLESS OTHERWISE SPECIFIED <input type="checkbox"/> TOLERANCES: UNLESS OTHERWISE SPECIFIED <input type="checkbox"/> DIMENSIONS TO CENTER UNLESS OTHERWISE SPECIFIED <input type="checkbox"/> DIMENSIONS TO SURFACE UNLESS OTHERWISE SPECIFIED <input type="checkbox"/> DIMENSIONS TO EDGE UNLESS OTHERWISE SPECIFIED	<input type="checkbox"/> ALL DIMENSIONS SHOWN <input type="checkbox"/> ALL DIMENSIONS UNLESS OTHERWISE SPECIFIED ARE IN MILLIMETERS <input type="checkbox"/> FINISH: UNLESS OTHERWISE SPECIFIED <input type="checkbox"/> TOLERANCES: UNLESS OTHERWISE SPECIFIED <input type="checkbox"/> DIMENSIONS TO CENTER UNLESS OTHERWISE SPECIFIED <input type="checkbox"/> DIMENSIONS TO SURFACE UNLESS OTHERWISE SPECIFIED <input type="checkbox"/> DIMENSIONS TO EDGE UNLESS OTHERWISE SPECIFIED	See Parts List MX ITD Side Feed Applicator PM227N (Ø.100-Ø.135 Insulation) 7.2.5
---	---	---