

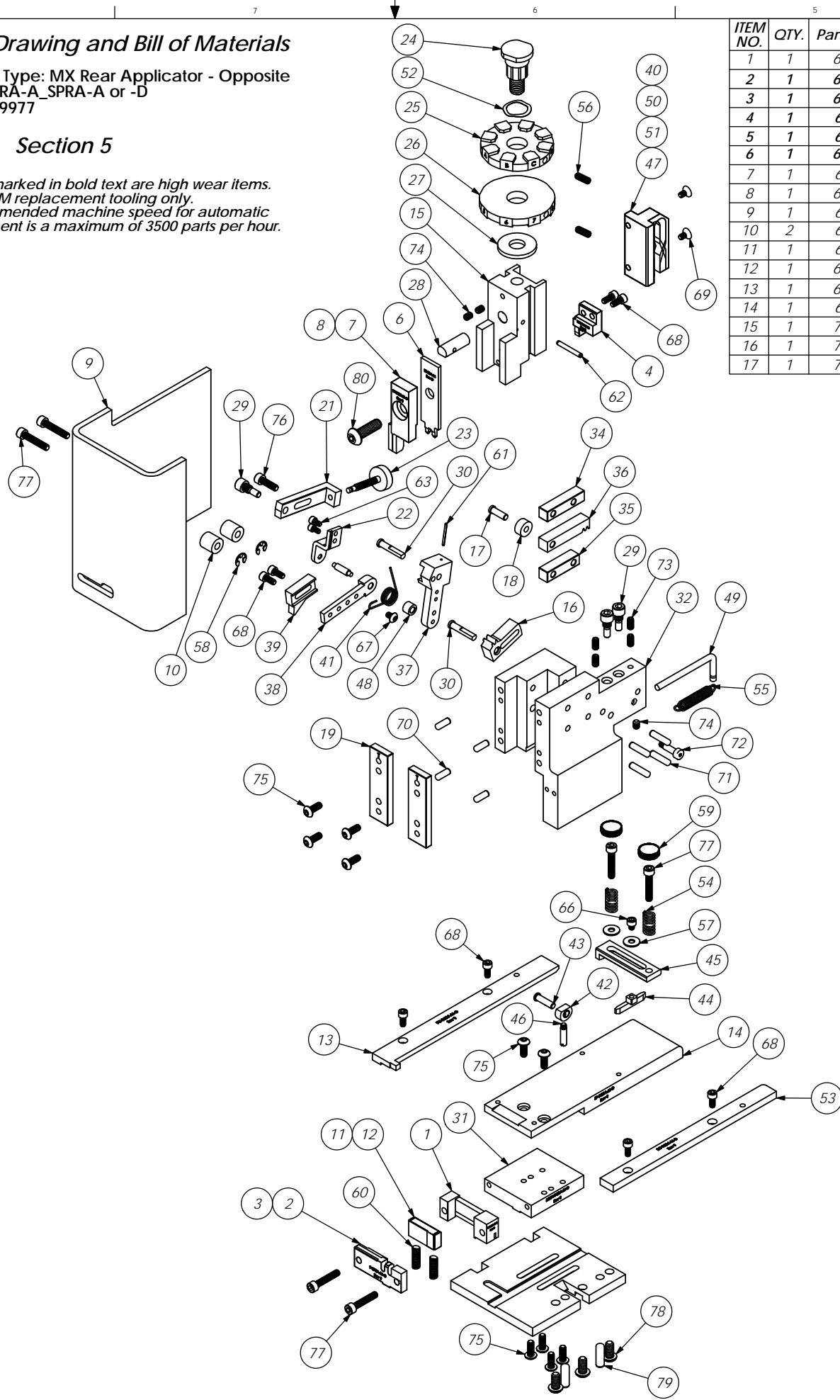
# Assembly Drawing and Bill of Materials

Applicator Type: MX Rear Applicator - Opposite  
Terminal: SRA-A\_SPRA-A or -D  
B.O.M. #: 79977

## Section 5

**NOTE:**

- (1) Items marked in bold text are high wear items.
- (2) Use OEM replacement tooling only.
- (3) Recommended machine speed for automatic equipment is a maximum of 3500 parts per hour.



ITEM NO.	QTY.	Part_Code	PART NUMBER	DESCRIPTION	ITEM NO.	QTY.	Part_Code	PART NUMBER	DESCRIPTION
1	1	60598	8-SQRA-M-O	Plunger Holder	18	1	74350	MX8	Cam Roller
2	1	<b>60851</b>	<b>9-SPRA-M-O</b>	<b>Anvil*</b>	19	2	74352	MX11	Gib
3	1	<b>60274</b>	<b>9-SRA-M</b>	<b>Anvil*</b>	20	1	74356	MX12	Feed Finger Pivot Pin
4	1	<b>60199</b>	<b>12-SPRA-M-O</b>	<b>Cut-off Punch*</b>	21	1	74360	MX13	Adjusting Bar
5	1	<b>60838</b>	<b>12-SRA-M-O</b>	<b>Cut-off Punch*</b>	22	1	74364	MX16	Retainer
6	1	<b>60272</b>	<b>13-SRA-M</b>	<b>Wire Rolling Tool*(SRA)</b>	23	1	74376	MX25	Stroke Adjustment Screw
7	1	60201	15-SPRA-M-O	Feed Set	24	1	74407	MX33	Mounting Post
8	1	62317	15-SQRA-M-O	Feed Set	25	1	60188	MX34-SRA-M	Wire Crimp Dial
9	1	60202	199-SRA-M-O	Guard	26	1	74409	MX35	Insulation Dial
10	2	60203	199S-SRA-M	Guard Spacer	27	1	74411	MX36	Dial Spacer
11	1	60200	346-SPRA-M-O	Plunger	28	1	74412	MX44	Locating Dowel
12	1	60307	346-SRA-M	Plunger	29	3	74419	MX50	Safety Pivot Pin
13	1	60193	FG-SQRA-M-O	Front Guide	30	2	74420	MX52	Pivot Pin
14	1	60191	FP-SQRA-M-O	Feed Plate	31	1	60190	MX54-SQRA-M-O	Slide Support
15	1	74343	MX3	Ram	32	1	60863	MX58-R-O	Frame
16	1	74346	MX6	Gear Arm	33	1	60636	MX59-R-SQRA-O	Base Plate
17	1	74347	MX7	Cam Pin	34	1	74912	MX69-R	Upper Rack Pad
					35	1	74913	MX70-R	Lower Rack Pad
					36	1	74914	MX71-R	Cam Rack
					37	1	60640	MX72-R-1-O	Swing Arm
					38	1	72287	MX73-R-1	Feed Arm
					39	1	60577	MX74-R-SQRA-O	Feed Finger(SPRA)
					40	1	60674	MX75-R-O	Cam (1 5/8" Downstroke)
					41	1	60679	MX80-1-R-O	Feed Spring
					42	1	74425	MX84-S	Brake Cam
					43	1	74426	MX85-S	Cam Pivot Pin
					44	1	60693	MX86-S-SRA-M	Brake Shoe
					45	1	75915	MX87-1-S	Lift Arm
					46	1	74430	MX88-S	Lever
					47	1	60206	MX89-R-O	Cam (1 1/8" Upstroke)
					48	1	72286	MX99-R-1	Spacer
					49	1	74917	MX100-R	Spring Bracket
					50	1	60570	MX101-R-O	Cam (1 5/8" Upstroke)
					51	1	60207	MX102-R-O	Cam (K Press Downstroke)
					52	1	72310	MX104	Wave Disc Spring
					53	1	60194	RG-SQRA-M-O	Rear Guide
					54	2	75342	LC-045E-6-M	Brake Spring
					55	1	74611	LE-037CD-6	Extension Spring
					56	2	70739	McMaster-Carr #3126A53	Spring Plunger
					57	1	72519	McMaster Carr #98029A043	#8 Hardened Washer
					58	2	72069	McMaster Carr #98407A122	#10 E-Style Retaining Ring
					59	2	73785	SPI 99-602-5	#10 Black Knurled Knob
					60	2	60204	.032x.25x.75	Spring
					61	1	62294	1.16_.75rp	1/16" x 3/4" Roll Pin
					62	1	62040	1.8_1.00rp	1/8" x 1" Roll Pin
					63	2	63207	6-32_.25sh	#6-32 x 1/4" Socket Hd Cap Screw
					64	1	63208	6-32_.25ssf	#6-32 x 1/4" Socket Hd Set Screw
					65	1	63210	8fw	#8 Flatwasher
					66	1	60265	8-32_.19sh	#8-32 x 3/16" Socket Hd Cap Screw
					67	1	63212	8-32_.25bh	#8-32 x 1/4" Button Hd Cap Screw
					68	8	63161	8-32_.38sh	#8-32 x 3/8" Socket Hd Cap Screw
					69	2		8-32_.31fh	#8-32 x 5/16" Flat Head Socket Screw
					70	4	63158	3.16_.50dp	Ø 3/16" x 1/2" Dowel Pin
					71	4	63470	3.16_.75dp	Ø 3/16" x 3/4" Dowel Pin
					72	1		3.16_.50shss	Ø3/16" x 1/2" Socket Hd Shoulder Screw
					73	4		10-32_.38ssf	#10-32 x 3/8" Socket Hd Set Screw
					74	3	63054	10-32_.25ss	#10-32 x 1/4" Socket Hd Set Screw
					75	10	76501	10-32_.50bh	#10-32 x 1/2" Button Hd Cap Screw
					76	1	70293	10-32_.63sh	#10-32 x 5/8" Socket Hd Cap Screw
					77	6	63155	10-32_1.00sh	#10-32 x 1" Socket Hd Cap Screw
					78	3	63632	1.4-20_.50bh	1/4-20 x 1/2" Button Hd Cap Screw
					79	2		1.4_.75dp	1/4" x 3/4" Dowel Pin
					80	1	63055	5.16-18_1.00bh	5/16-18 x 1" Button Hd Cap Screw

**NOTE: ITEMS MARKED IN BOLD TEXT ARE HIGH WEAR ITEMS**

DO NOT SCALE DRAWING UNLESS OTHERWISE SPECIFIED DIMENSIONS ARE IN INCHES. DECIMALS ARE FRACTIONS. DIMENSIONS ARE ANGLES.		SURFACE FINISH: <input checked="" type="checkbox"/> ALL OVER	
THE INFORMATION CONTAINED WITHIN THIS DRAWING IS THE SOLE PROPERTY OF ETICO ENGINEERED PRODUCTS. IT IS TO BE USED ONLY FOR THE SPECIFIC APPLICATION AND FOR WHICH IT WAS DESIGNED. NO PARTS OF THIS DRAWING ARE TO BE REPRODUCED OR TRANSMITTED IN ANY FORM OR BY ANY MEANS, ELECTRONIC OR MECHANICAL, INCLUDING PHOTOCOPYING, RECORDING, OR BY ANY INFORMATION STORAGE AND RETRIEVAL SYSTEM, WITHOUT THE WRITTEN PERMISSION OF ETICO ENGINEERED PRODUCTS.		MATERIAL: <b>See Parts List</b>	
PART NO: <b>ECCR#12356</b>		PARTS LIST:	
REVISION:		DATE:	
DRAWN BY:		CHECKED BY:	
DATE:		DATE:	
APPLICATION:		DRAWN BY:	
SCALE:		DATE:	
CHECKED BY:		DATE:	
DATE:		DATE:	