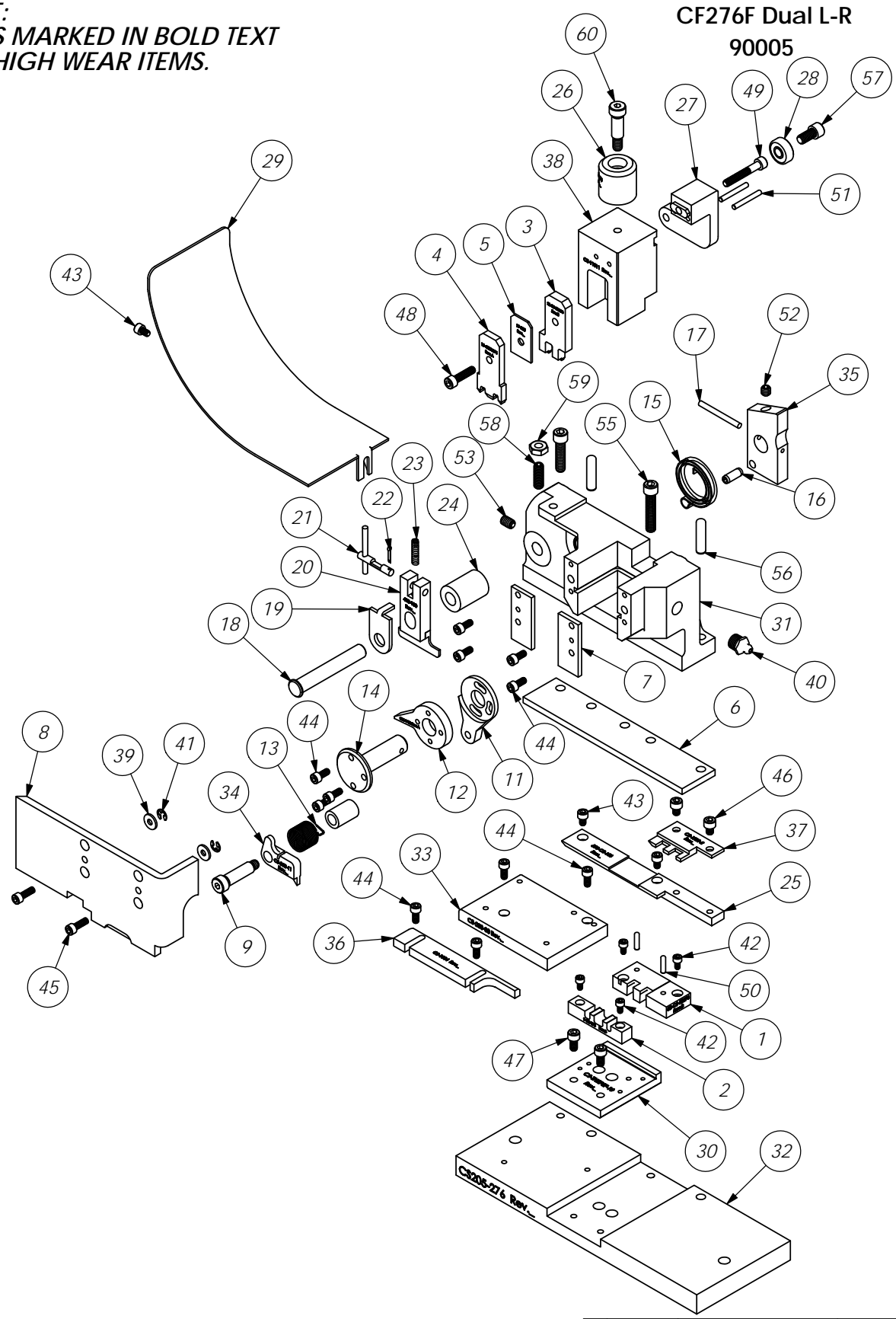


ITEM NO.	QTY.	Part_Code	PART NUMBER	DESCRIPTION
1	1	67532	8B-CS-50276	Die
2	1	67545	9-CS-178	Anvil
3	1	67565	12-CS-50276	Cut-off Punch
4	1	67582	13-CS50276	Wire Rolling Tool
5	1	76434	17-055	Spacer
6	1	73816	116-187	Casting Spacer
7	2	67281	169-3	Gib
8	1	69308	176-CS-11	Guard
9	1	76713	301-5	Shoulder Screw
10	1	69267	304-.750	Feed Finger Spacer
11	1	74393	305-6	Feed Finger Arm
12	1	69510	306-1-TH	Feed Stop Arm
13	1	76743	307-16	Feed Finger Spring
14	1	74400	308-Finished	Feed Shaft
15	1	74402	310	Cam Return Spring
16	1	74403	311	Roll Pin
17	1	74404	312	Cam Taper Pin
18	1	74495	401-Finished	Brake Shaft
19	1	74496	402	Spring Retainer
20	1	64601	403-100	Brake Body
21	1	74673	404_405as	Brake Cam Ass'y
22	1	74675	406	Cotter Pin
23	1	74676	407	Brake Spring
24	1	69958	408-1.050	Brake Spacer
25	1	69402	500-CS-156	Rear Guide
26	1	77918	1102-FS	Floating Shank
27	1	75710	1125-Finished	Cam Roller Bracket
28	1	75719	1142	Cam Roller Bearing
29	1	76186	1800	Stock Chute
30	1	60571	CS-TH276F-10	Tool Holder
31	1	100011	CS101-3	Casting
32	1	60794	CS-205-276	Base Plate
33	1	60827	CS-250-38	Die Plate
34	1	69713	CS-303-11	Feed Finger
35	1	63542	CS-314L-156	Cam
36	1	69509	CS-1004	Adjustable Front Guide
37	1	69708	CS-1721-2	Stripper
38	1	100012	CS-11011	Plunger
39	2	76945	GS-050	Guard Spacer
40	1	63506	McMaster-Carr #1095K11	1/8 NPT Grease Fitting
41	2	72069	McMaster Carr #98407A118	#8 E-Style Retaining Ring
42	4	63207	6-32_.25sh	#6-32 x 1/4" Socket Hd Cap Screw
43	3	63163	8-32_.25sh	#8-32 x 1/4" Socket Hd Cap Screw
44	11	63161	8-32_.38sh	#8-32 x 3/8" Socket Hd Cap Screw
45	2	63164	8-32_.50sh	#8-32 x 1/2" Socket Hd Cap Screw
46	2	63473	10-32_.25sh	#10-32 x 1/4" Socket Hd Cap Screw
47	2	70110	10-32_.38sh	#10-32 x 3/8" Socket Hd Cap Screw
48	1	63532	10-32_.75sh	#10-32 x 3/4" Socket Hd Cap Screw
49	1	77396	10-32_1.25sh	#10-32 x 1 1/4" Socket Hd Cap Screw
50	2	63507	1.8_.50dp	Ø 1/8" x 1/2" Dowel
51	2	62849	1.8_1.00dp	1/8" x 1" Dowel
52	1	63511	1.4-20_.25ssf	1/4-20 x 1/4" Socket Hd Set Screw
53	1	64189	1.4-20_.38ssf	1/4-20 x 3/8" Socket Hd Set Screw
54	1	63168	1.4-20_1.00sh	1/4-20 x 1" Socket Hd Cap Screw
55	1	71482	1.4-20_1.25sh	1/4-20 x 1 1/4" Socket Hd Cap Screw
56	2	63510	1.4_1.00dp	1/4 x 1" Dowel Pin
57	1	62184	1.4-28_.50sh	1/4-28 x 1/2" Socket Hd Cap Screw
58	1	63513	1.4-28_.75ss	1/4-28 x 3/4" Socket Set Screw
59	1	63512	1.4-28_jn	1/4-28 Jam Nut
60	1	78918	5-16_.75shss	5/16 x 3/4" Shoulder Screw

NOTE:
ITEMS MARKED IN BOLD TEXT
ARE HIGH WEAR ITEMS.



ITEM NO.	PART No.	DESCRIPTION	MATERIAL SPECIFICATION	QTY	RECD
PARTS LIST					
MATERIAL:		ETCO ENGINEERED PRODUCTS 25 BELLOWS STREET WARWICK RI 02888 (401)-467-2400			
See Parts List		TITLE: CF276F Dual Attach ECC Applicator - (Left to Right)			
HEAT TREAT:		DWG. NO: CF276F Dual L-R			
FINISH:		REV: -			
SCALE: 1:2.5		CAD FILE:		CHECKED BY: SCJ	DATE: 11/13/14
APPLICATION		DATE:		DATE:	DATE:
LVL	REVISION	BY/DATE	DATE	DATE	DATE