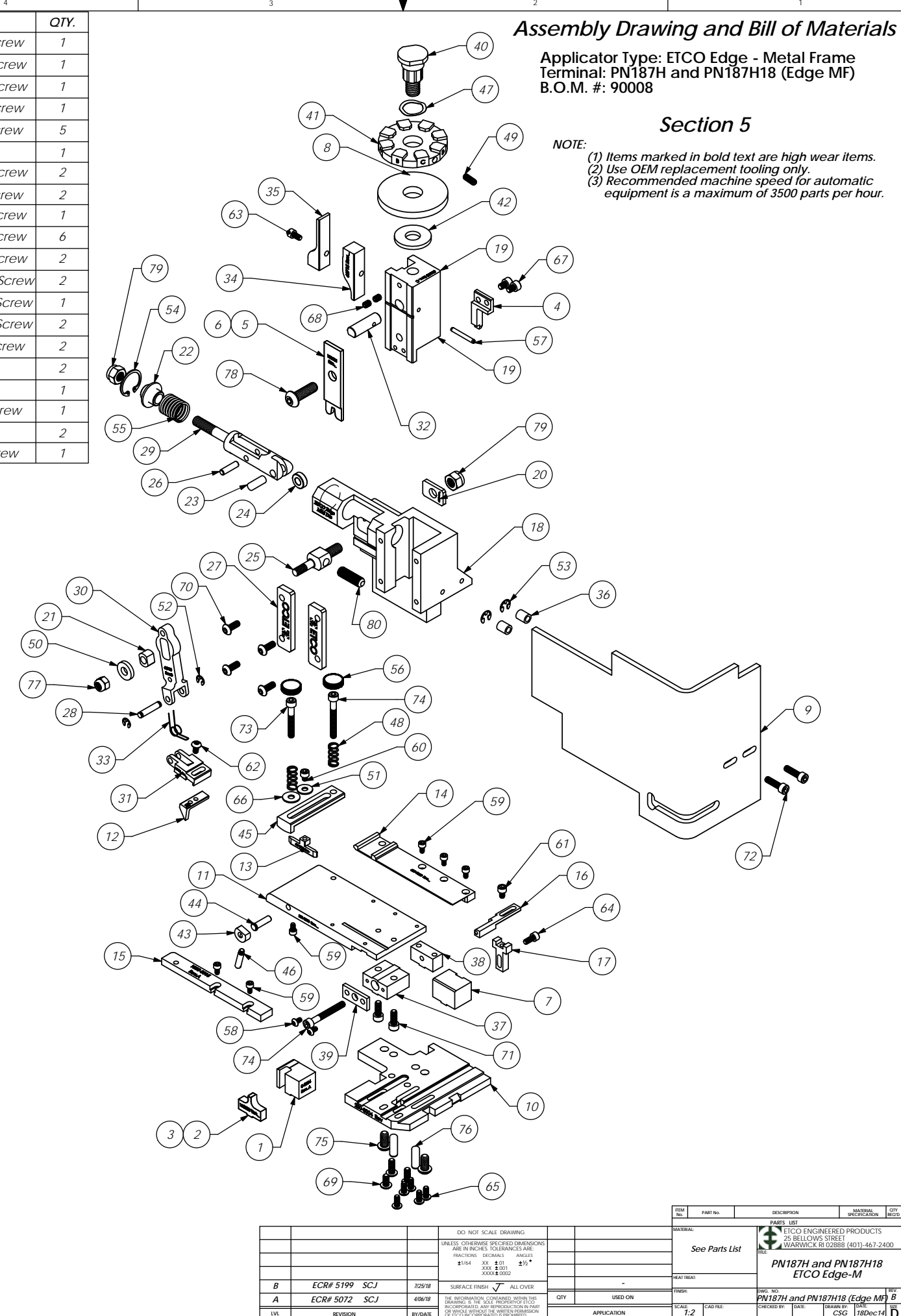


ITEM NO.	Part_code	PART NUMBER	DESCRIPTION	QTY.
1	100030	8-8004	Cut-off Die	1
2	100032	9-8004	Anvil - PN187H	1
3	100502	9-8004-1	Anvil - PN187H18	1
4	100031	12-8004	Cut-off Punch	1
5	100033	13-8004	Wire Rolling Tool - PN187H	1
6	100501	13-8004-1	Wire Rolling Tool - PN187H18	1
7	74802	26-3000	Backup Block	1
8	100554	35-8000	No Insulation Dial	1
9	76403	199-3005	Safety Guard	1
10	100035	200-8004	Baseplate	1
11	100005	250-8000	Feed Plate	1
12	100037	303-8004	Feed Finger	1
13	100038	403-8004	Brake Shoe	1
14	100006	500-8000	Rear Guide Rail	1
15	75929	1000-3015	Front Guide Rail	1
16	76681	1600A-3002	Adjustable Stripper Block	1
17	74803	1600B-3000	Adjustable Stripper Holder	1
18	63660	ED2-M	Frame	1
19	63658	ED3	Plunger	1
20	63709	ED4	Retainer	1
21	63731	ED5	Feed Adjustment Guide Block	1
22	63714	ED6	Spring Retainer	1
23	63733	ED7	Cam Roll Pin	1
24	63706	ED8	Cam Roller	1
25	63704	ED9	Feed Adjustment Block	1
26	64245	ED10	Feed Arm Pin	1
27	63717	ED11	Gib	2
28	63701	ED12	Feed Finger Shaft	1
29	63705	ED13	Adjustable Feed Piston	1
30	63700	ED14	Feed Arm	1
31	63702	ED16	Feed Finger Retainer	1
32	63659	ED44	Locating Dowel	1
33	63732	ED45	Feed Finger Spring	1
34	63715	ED51	Post-feed Cam	1
35	63716	ED52	Pre-Feed Cam	1
36	74491	GS-375	Guard Spacer	2
37	74384	MX29-S	Slide Support	1
38	74388	MX30-S	Support Anchor	1
39	74390	MX32-S	Support Cover	1
40	74407	MX33	Mounting Post	1
41	100036	MX34-8004	Wire Crimp Dial	1
42	74411	MX36	Dial Spacer	1
43	74425	MX84-S	Brake Cam	1
44	74426	MX85-S	Cam Pivot Pin	1
45	100016	MX87-8000	Lift Arm	1
46	74430	MX88-S	Lever	1
47	72310	MX104	Wave Disc Spring	1
48	77322	LC-045E-10-M	Spring	2
49	70739	McMaster-Carr #3126A53	Spring Plunger	1
50	64213	McMaster Carr #98370A28	1/4" Hardened Flatwasher	1
51	72519	McMaster Carr #98029A043	#8 Hardened Washer	1
52	72069	McMaster Carr #98407A118	#8 E-Style Retaining Ring	2
53	64214	McMaster Carr #98407A122	#10 E-Style Retaining Ring	2
54	63734	McMaster Carr #98455A_122	Retaining Ring	1
55	63735	MS24585-1453	Piston Spring	1
56	73785	SPI 99-602-5	#10 Black Knurled Knob	2
57	62040	1.8_1.00rp	1/8" x 1" Roll Pin	1
58	63792	6-32_.25bh	#6-32 x 1/4" Button Hd Cap Screw	2
59	63207	6-32_.25sh	#6-32 x 1/4" Socket Hd Cap Screw	6
60	60265	8-32_.19sh	#8-32 x 3/16" Socket Hd Cap Screw	1

ITEM NO.	Part_code	PART NUMBER	DESCRIPTION	QTY.
61	63163	8-32_.25sh	#8-32 x 1/4" Socket Hd Cap Screw	1
62	77097	8-32_.31bh	#8-32 x 5/16" Button Hd Cap Screw	1
63	100091	8-32_.31sh	#8-32 x 5/16" Socket Hd Cap Screw	1
64	63161	8-32_.38sh	#8-32 x 3/8" Socket Hd Cap Screw	1
65	61472	8-32_.38bh	#8-32 x 3/8" Button Hd Cap Screw	5
66	63753	10fw	#10 Flatwasher	1
67	63473	10-32_.25sh	#10-32 x 1/4" Socket Hd Cap Screw	2
68	63054	10-32_.25ss	#10-32 x 1/4" Socket Hd Set Screw	2
69	78993	10-32_.38bh	#10-32 x 3/8" Button Hd Cap Screw	1
70	76501	10-32_.50bh	#10-32 x 1/2" Button Hd Cap Screw	6
71	63056	10-32_.50sh	#10-32 x 1/2" Socket Hd Cap Screw	2
72	64215	10-32_.69sh	#10-32 x 11/16" Socket Hd Cap Screw	2
73	77396	10-32_1.25sh	#10-32 x 1 1/4" Socket Hd Cap Screw	1
74	63826	10-32_1.50sh	#10-32 x 1 1/2" Socket Hd Cap Screw	2
75	63632	1.4-20_.50bh	1/4-20 x 1/2" Button Hd Cap Screw	2
76	64215	1.4_.75dp	1/4" x 3/4" Dowel Pin	2
77	63707	1.4_20 LN	1/4-20 Lock Nut	1
78	63055	5.16-18_1.00bh	5/16-18 x 1" Button Hd Cap Screw	1
79	63708	5.16-18 LN	5/16-18 Lock Nut	2
80	64216	5.16-24_1.00ssf	5/16-24 x 1" Socket Hd Set Screw	1

Note:
 1) Items marked in "Bold Italic" = High wear tooling.
 2) Use OEM replacement tooling only.



Assembly Drawing and Bill of Materials

Applicator Type: ETCO Edge - Metal Frame
 Terminal: PN187H and PN187H18 (Edge MF)
 B.O.M. #: 90008

Section 5

NOTE:
 (1) Items marked in bold text are high wear items.
 (2) Use OEM replacement tooling only.
 (3) Recommended machine speed for automatic equipment is a maximum of 3500 parts per hour.

REV	DATE	DESCRIPTION	BY	CHKD	APP'D
B	ECR# 5199	SCJ	7/25/18		
A	ECR# 5072	SCJ	4/9/18		

REV	DATE	DESCRIPTION	BY	CHKD	APP'D
B	ECR# 5199	SCJ	7/25/18		
A	ECR# 5072	SCJ	4/9/18		

REV	DATE	DESCRIPTION	BY	CHKD	APP'D
B	ECR# 5199	SCJ	7/25/18		
A	ECR# 5072	SCJ	4/9/18		

REV	DATE	DESCRIPTION	BY	CHKD	APP'D
B	ECR# 5199	SCJ	7/25/18		
A	ECR# 5072	SCJ	4/9/18		

REV	DATE	DESCRIPTION	BY	CHKD	APP'D
B	ECR# 5199	SCJ	7/25/18		
A	ECR# 5072	SCJ	4/9/18		