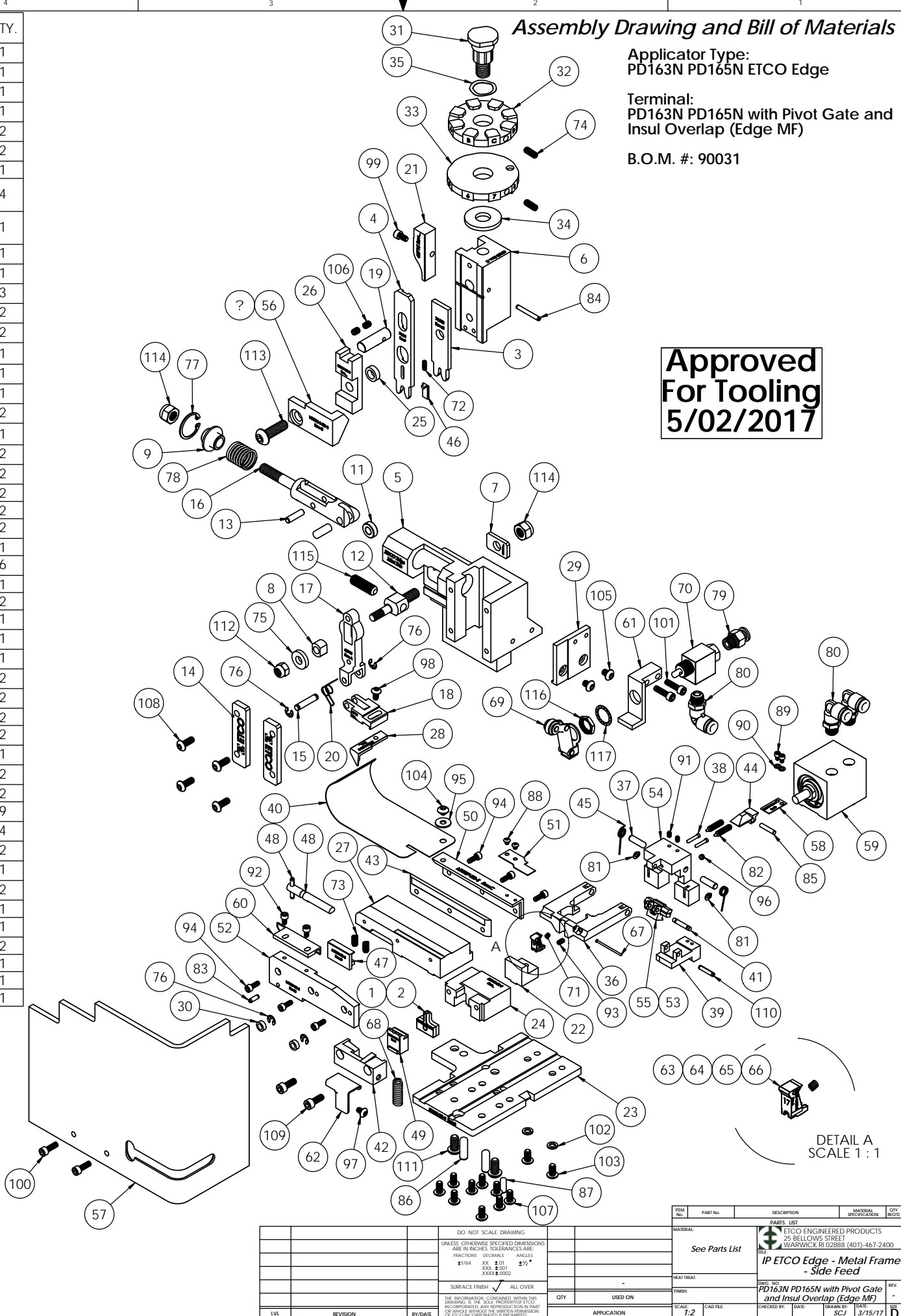


ITEM NO.	Part_Code	PART NUMBER	DESCRIPTION	QTY.	ITEM NO.	Part_Code	PART NUMBER	DESCRIPTION	QTY.
1	76652	9-4001	Wire Anvil	1	69	72317	Clippard #12296	Cam Follower	1
2	76651	9A-4001	Insulation Anvil	1	70	72318	Clippard MJV-3	3-Way Valve	1
3	76655	13-4001	Wire Rolling Tool	1	71	71013	LC-014A-1-M	Compression Spring	1
4	76654	14-4003	Insulation Rolling Tool (Overlap)	1	72	72315	LC-022A-4	Compression Spring	1
5	63660	ED2-M	Frame	1	73	78681	LC-029B-3-M	Compression Spring	2
6	63658	ED3	Plunger	1	74	70739	McMaster-Carr #3126A53	Spring Plunger	2
7	63709	ED4	Retainer	1	75	64213	McMaster Carr #98370A28	1/4" Hardened Flatwasher	1
8	63731	ED5	Feed Adjustment Guide Block	1	76	72069	McMaster Carr #98407A118	#8 E-Style Retaining Ring	4
9	63714	ED6	Spring Retainer	1	77	63734	McMaster Carr #98455A_122	Retaining Ring	1
10	63733	ED7	Cam Roll Pin	1	78	63735	MS24585-1453	Piston Spring	1
11	63706	ED8	Cam Roller	1	79	73222	Pisco PC250-N1U	1/4" x 1/8" NPT Straight	1
12	63704	ED9	Feed Adjustment Block	1	80	72352	Pisco PL250-N1U	Ø1/4" x 1/8"-NPT Elbow Fitting	3
13	64245	ED10	Feed Arm Pin	1	81	63200	Truarc #5555-12	Retaining Ring	2
14	63717	ED11	Gib	2	82	63201	Vlier #PH-51-P	Spring Plunger	2
15	63701	ED12	Feed Finger Shaft	1	83	63205	1.8_.38rp	Ø1/8" x 3/8" Roll Pin	1
16	63705	ED13	Adjustable Feed Piston	1	84	62040	1.8_1.00rp	1/8" x 1" Roll Pin	1
17	63700	ED14	Feed Arm	1	85	1.8_.63dp	1/8" x 5/8" Dowel	1	
18	63702	ED16	Feed Finger Retainer	1	86	64215	1.4_.75dp	1/4" x 3/4" Dowel Pin	2
19	63659	ED44	Locating Dowel	1	87	63158	3.16_.50dp	Ø3/16" x 1/2" Dowel Pin	1
20	63732	ED45	Feed Finger Spring	1	88	63203	4-40_13bh	#4-40 x 1/8" Button Hd Cap Screw	2
21	63715	ED51	Post-feed Cam	1	89	63204	4-40_16sh	#4-40 x 5/32" Socket Hd Cap Screw	2
22	100046	ED60-ITD-S	Insulation Pusher Stop	1	90	63202	4lw	#4 Lock Washer	2
23	100047	ED302-ITD-S	Base Plate	1	91	63206	5-40_19ssf	#5-40 x 3/16" Socket Set Screw	2
24	100048	ED310-ITD-S	Die Holder	1	92	63207	6-32_25sh	#6-32 x 1/4" Socket Hd Cap Screw	2
25	100049	ED315-ITD-S	Insulation Tool Spacer	1	93	63208	6-32_25ssf	#6-32 x 1/4" Socket Hd Set Screw	1
26	100050	ED324-ITD-S	Cut-off Pad Driver	1	94	63209	6-32_38sh	#6-32 x 3/8" Socket Hd Cap Screw	6
27	100051	ED330-ITD-S	Feed Plate	1	95	63210	8fw	#8 Flatwasher	1
28	100052	ED337-2-ITD-S	Feed Finger	1	96	63211	8-32_13ssf	#8-32 x 1/8" Socket Hd Set Screw	2
29	100053	ED358-1-ITD-S	Valve Mounting Plate	1	97	63212	8-32_25bh	#8-32 x 1/4" Button Hd Cap Screw	1
30	73888	GS-125	Guard Spacer	2	98	77097	8-32_31bh	#8-32 x 5/16" Button Hd Cap Screw	1
31	74407	MX33	Mounting Post	1	99	100091	8-32_31sh	#8-32 x 5/16" Socket Hd Cap Screw	1
32	72002	MX34-D	Wire Crimp Dial	1	100	63164	8-32_50sh	#8-32 x 1/2" Socket Hd Cap Screw	2
33	61844	MX35-2	Insulation Dial	1	101	63162	8-32_63sh	#8-32 x 5/8" Socket Hd Cap Screw	2
34	74411	MX36	Dial Spacer	1	102	78517	10lw	#10 Lockwasher	2
35	72310	MX104	Wave Disc Spring	1	103	63531	10-24_38bh	#10-24 x 3/8" Button Hd Cap Screw	2
36	70606	MX301-11-ITD-S	Latching Gate	1	104	78327	10-32_13bh	#10-32 x 1/8" Button Hd Cap Screw	1
37	76563	MX304-ITD-S	Hinge Pin	2	105	78687	10-32_25bh	#10-32 x 1/4" Button Hd Cap Screw	2
38	76564	MX305-ITD-S	Pin	2	106	63054	10-32_25ss	#10-32 x 1/4" Socket Hd Set Screw	2
39	78613	MX306-2-ITD-S	Insulation Pusher	1	107	78993	10-32_38bh	#10-32 x 3/8" Button Hd Cap Screw	9
40	76566	MX307-ITD-S	Stock Chute	1	108	76501	10-32_50bh	#10-32 x 1/2" Button Hd Cap Screw	4
41	76567	MX308-ITD-S	Latch Pivot Pin	1	109	63056	10-32_50sh	#10-32 x 1/2" Socket Hd Cap Screw	2
42	78936	MX309-4-ITD-S	Cut-off Keeper	1	110	63053	1.8_.63rp	1/8" x 5/8" Roll Pin	1
43	76571	MX312-ITD-S	Left Feed Shim (3/16" Terminal)	1	111	63632	1.4-20_50bh	1/4-20 x 1/2" Button Hd Cap Screw	2
44	76573	MX314-ITD-S	Catch	1	112	63707	1.4_20 LN	1/4-20 Lock Nut	1
45	76575	MX316-ITD-S	Latch Spring	2	113	63055	5.16-18_1.00bh	5/16-18 x 1" Button Hd Cap Screw	1
46	76578	MX319-ITD-S	Knock off	1	114	63708	5.16-18 LN	5/16-18 Lock Nut	2
47	76579	MX320-ITD-S	Brake	1	115	64216	5.16-24_1.00ssf	5/16-24 x 1" Socket Hd Set Screw	1
48	76580	MX321-ITD-S	Brake Actuator	1	116		15.32-32hn	15/32-32 Hex Nut	1
49	71014	MX326-8-ITD-S	Cut-off Pad	1	117		1.2isw	1/2" Internal Star Washer	1
50	76586	MX327-ITD-S	Left Feed Rail	1					
51	76587	MX328-ITD-S	Hold Down Spring	1					
52	76588	MX329-ITD-S	Right Feed Rail	1					
53	76590	MX331-ITD-S	Latch (Automatic)	1					
54	76591	MX332-ITD-S	Support	1					
55	76593	MX334-ITD-S	Latch/Wire Stop	1					
56	72233	MX338-1-ITD-S	Arm Switch Cam (1 1/8" Stroke)	1					
57	70745	MX339-ITD-S	Guard	1					
58	72260	MX344-1-ITD-S	Leaf Spring	1					
59	72099	MX348-ITD-S	Air Cylinder	1					
60	72893	MX357-ITD-S	Bracket	1					
61	61993	MX358-2-ITD-S	Valve Mounting Plate	1					
62	78835	MX360-ITD-S	Scrap Retainer	1					
63	61833	MX361-17-ITD-S	Pivot Gate (Ø.090-Ø.120 Insulation)	1					
64	61843	MX361-18-ITD-S	Non-Pivoting Gate(.110-.140 dia. Insulation)	1					
65	71087	MX361-14-ITD-S	Pivot Gate (Ø.055-Ø.075 Insulation)	1					
66	71043	MX361-2-ITD-S	Pivot Gate (Ø.070-Ø.100 Insulation)	1					
67	71008	MX362-ITD-S	Pivot Gate Pin	1					
68	72350	5-047x1.000	Compression Spring	1					

NOTE: ITEMS MARKED IN BOLD TEXT ARE HIGH WEAR ITEMS

NOTE:
 (1) Items marked in bold text are high wear items.
 (2) Use OEM replacement tooling only.
 (3) Recommended machine speed for automatic equipment is a maximum of 3500 parts per hour.



REV	DATE	DESCRIPTION	MATERIAL SPECIFICATION	OFF. RECD.
1	3/15/17	ISSUED FOR TOOLING		

DO NOT SCALE DRAWING	UNLESS OTHERWISE SPECIFIED DIMENSIONS ARE IN INCHES. TOLERANCES ARE FRACTIONS DECIMALS ANGLES			
1/16" 0.001 0.005 0.010 0.015 0.030 0.060 0.125 0.250 0.500 1.000	1/16" 0.001 0.005 0.010 0.015 0.030 0.060 0.125 0.250 0.500 1.000			
SURFACE FINISH	ALL OVER			
THE INFORMATION CONTAINED HEREIN IS UNCLASSIFIED EXCEPT WHERE SHOWN OTHERWISE AND IS TO BE RELEASED TO THE PUBLIC UPON REQUEST.				
REV	DATE	DESCRIPTION	BY/DATE	APP. DATE
1	3/15/17	ISSUED FOR TOOLING		

See Parts List	ETCO ENGINEERED PRODUCTS 25 BELLOWS STREET WARWICK, RI 02888 (401)-467-2400
Part No.	PD163N PD165N with Pivot Gate and Insul Overlap (Edge MF)
Scale	1:2
Drawn By	SCJ
Checked By	
Date	3/15/17