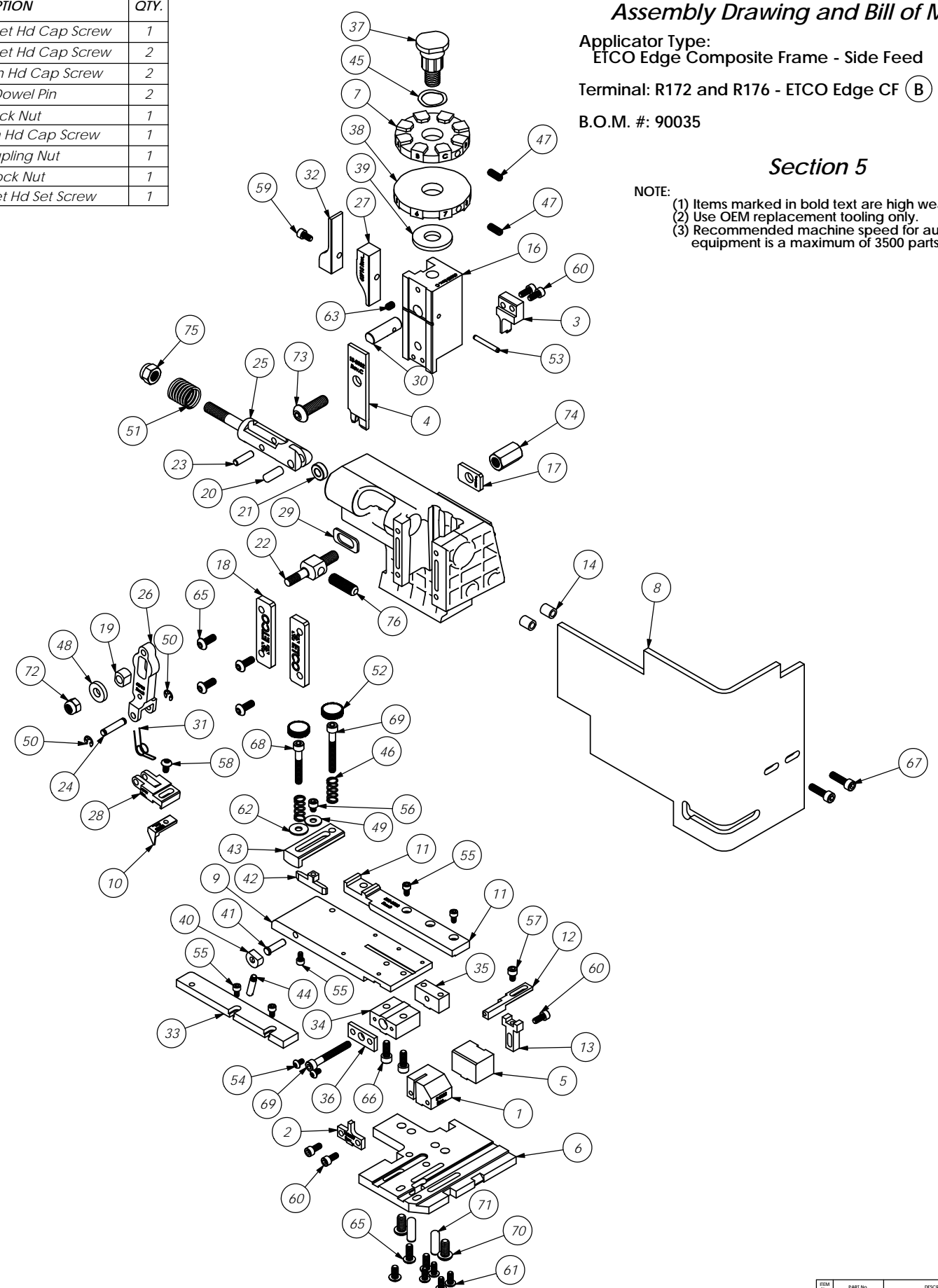


ITEM NO.	Part_Code	PART NUMBER	DESCRIPTION	QTY.	ITEM NO.	Part_Code	PART NUMBER	DESCRIPTION	QTY.
1	73997	8-3002	Cut-off Die	1	68	77396	10-32_1.25sh	#10-32 x 1 1/4" Socket Hd Cap Screw	1
2	100329	9-3002-1	Anvil	1	69	63826	10-32_1.50sh	#10-32 x 1 1/2" Socket Hd Cap Screw	2
3	73993	12-3002	Cut-off Punch	1	70	63632	1.4-20_50bh	1/4-20 x 1/2" Button Hd Cap Screw	2
4	73994	13-3002	Wire Rolling Tool	1	71	64215	1.4_75dp	1/4" x 3/4" Dowel Pin	2
5	74802	26-3000	Backup Block	1	72	63707	1.4_20 LN	1/4-20 Lock Nut	1
6	100133	200-8009	Baseplate	1	73	63055	5.16-18_1.00bh	5/16-18 x 1" Button Hd Cap Screw	1
7	78321	34-3002	Wire Crimp Dial	1	74	100063	5.16-18cn	5/16-18 Coupling Nut	1
8	76403	199-3005	Safety Guard	1	75	63708	5.16-18 LN	5/16-18 Lock Nut	1
9	74060	250-3002	Feed Plate	1	76	64216	5.16-24_1.00ssf	5/16-24 x 1" Socket Hd Set Screw	1
10	100135	303-8002	Feed Finger	1					
11	74059	500-3002	Rear Guide Rail	1					
12	76681	1600A-3002	Adjustable Stripper Block	1					
13	74803	1600B-3000	Adjustable Stripper Holder	1					
14	74491	GS-375	Guard Spacer	2					
15	100001	ED2-C-1	ETCO Edge Composite Frame - Machined	1					
16	63658	ED3	Plunger	1					
17	63709	ED4	Retainer	1					
18	63717	ED11	Gib	2					
19	63731	ED5	Feed Adjustment Guide Block	1					
20	63733	ED7	Cam Roll Pin	1					
21	63706	ED8	Cam Roller	1					
22	63704	ED9	Feed Adjustment Block	1					
23	64245	ED10	Feed Arm Pin	1					
24	63701	ED12	Feed Finger Shaft	1					
25	63705	ED13	Adjustable Feed Piston	1					
26	63700	ED14	Feed Arm	1					
27	63715	ED51	Post-feed Cam	1					
28	63702	ED16	Feed Finger Retainer	1					
29	64121	ED19-C	Shim for Nylon Frame	1					
30	63659	ED44	Locating Dowel	1					
31	63732	ED45	Feed Finger Spring	1					
32	63716	ED52	Pre-Feed Cam	1					
33	72643	MX28-2-S	Front Guide Rail	1					
34	74384	MX29-S	Slide Support	1					
35	74388	MX30-S	Support Anchor	1					
36	74390	MX32-S	Support Cover	1					
37	74407	MX33	Mounting Post	1					
38	74409	MX35	Insulation Dial	1					
39	74411	MX36	Dial Spacer	1					
40	74425	MX84-S	Brake Cam	1					
41	74426	MX85-S	Cam Pivot Pin	1					
42	74428	MX86-S	Brake Shoe	1					
43	75178	MX87-S	Lift Arm	1					
44	74430	MX88-S	Lever	1					
45	72310	MX104	Wave Disc Spring	1					
46	77322	LC-045E-10-M	Spring	2					
47	70739	McMaster-Carr #3126A53	Spring Plunger	2					
48	64213	McMaster Carr #98370A28	1/4" Hardened Flatwasher	1					
49	72519	McMaster Carr #98029A043	#8 Hardened Washer	1					
50	72069	McMaster Carr #98407A118	#8 E-Style Retaining Ring	2					
51	63735	MS24585-1453	Piston Spring	1					
52	73785	SPI 99-602-5	#10 Black Knurled Knob	2					
53	62040	1.8_1.00p	1/8" x 1" Roll Pin	1					
54	63792	6-32_25bh	#6-32 x 1/4" Button Hd Cap Screw	2					
55	63207	6-32_25sh	#6-32 x 1/4" Socket Hd Cap Screw	6					
56	60265	8-32_19sh	#8-32 x 3/16" Socket Hd Cap Screw	1					
57	63163	8-32_25sh	#8-32 x 1/4" Socket Hd Cap Screw	1					
58	77097	8-32_31bh	#8-32 x 5/16" Button Hd Cap Screw	1					
59	100091	8-32_31sh	#8-32 x 5/16" Socket Hd Cap Screw	1					
60	63161	8-32_38sh	#8-32 x 3/8" Socket Hd Cap Screw	5					
61	61472	8-32_38bh	#8-32 x 3/8" Button Hd Cap Screw	4					
62	63753	10fw	#10 Flatwasher	1					
63	63054	10-32_25ss	#10-32 x 1/4" Socket Hd Set Screw	1					
64	78993	10-32_38bh	#10-32 x 3/8" Button Hd Cap Screw	1					
65	76501	10-32_50bh	#10-32 x 1/2" Button Hd Cap Screw	6					
66	63056	10-32_50sh	#10-32 x 1/2" Socket Hd Cap Screw	2					
67	64215	10-32_69sh	#10-32 x 11/16" Socket Hd Cap Screw	2					

NOTE: ITEMS MARKED IN BOLD TEXT ARE HIGH WEAR ITEMS



Assembly Drawing and Bill of Materials

Applicator Type:
ETCO Edge Composite Frame - Side Feed

Terminal: R172 and R176 - ETCO Edge CF (B) (C)

B.O.M. #: 90035

Section 5

- NOTE:
- (1) Items marked in bold text are high wear items.
 - (2) Use OEM replacement tooling only.
 - (3) Recommended machine speed for automatic equipment is a maximum of 3500 parts per hour.

REV	DESCRIPTION	DATE	BY/DAE	APP	SCALE	APP	DATE	BY/DAE	APP
C	ECR# 4805 SCJ	10/01/11							
B	ECR# 4762 SCJ	8/28/11							
A	ECR# 4748 SCJ	8/15/11							

DO NOT SCALE DRAWING		UNLESS OTHERWISE SPECIFIED DIMENSIONS ARE IN INCHES TOLERANCES ARE:	
FRACTIONS	DECIMALS	ANGLES	
±.004	±.01	±.01°	
	±.001	±.01°	
	±.0005	±.01°	

MATERIAL: See Parts List		ETCO ENGINEERED PRODUCTS 25 BELLOWS STREET WARWICK, RI 02888 (401)-467-2400	
PART NAME: R172 and R176 - ETCO Edge CF		REV: C	
SCALE: 1:2		DATE: 3/09/16	
APP: SCJ		REV: D	