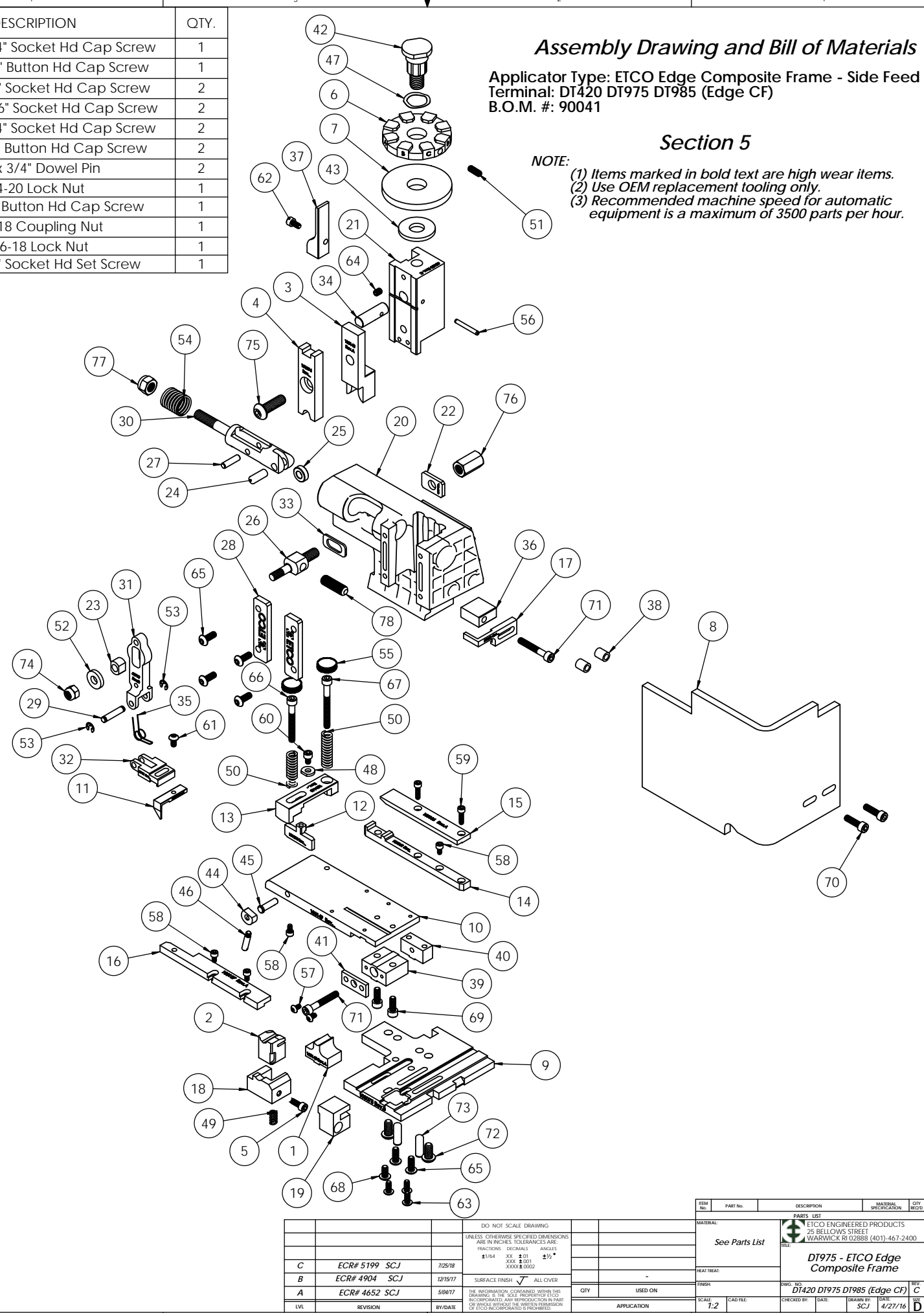


ITEM NO.	Part_Code	PART NUMBER	DESCRIPTION	QTY.	ITEM NO.	Part_Code	PART NUMBER	DESCRIPTION	QTY.
1	100145	9-8010	Anvil	1	67	63166	10-32_1.75sh	#10-32 x 1 3/4" Socket Hd Cap Screw	1
2	100144	12-8010	Cut-Off Pad	1	68	78993	10-32_.38bh	#10-32 x 3/8" Button Hd Cap Screw	1
3	100143	13-8010	Wire Rolling Tool	1	69	63056	10-32_.50sh	#10-32 x 1/2" Socket Hd Cap Screw	2
4	100074	15-8007	Cut-off Pad Driver	1	70	64215	10-32_.69sh	#10-32 x 11/16" Socket Hd Cap Screw	2
5	78292	26C-3087	Locking Screw	1	71	77396	10-32_1.25sh	#10-32 x 1 1/4" Socket Hd Cap Screw	2
6	100101	34-8007	Wire Crimp Dial	1	72	63632	1.4-20_.50bh	1/4-20 x 1/2" Button Hd Cap Screw	2
7	100554	35-8000	No Insulation Dial	1	73	64215	1.4_.75dp	1/4" x 3/4" Dowel Pin	2
8	63583	199-6045	Safety Guard	1	74	63707	1.4_20 LN	1/4-20 Lock Nut	1
9	100075	200-8007	Baseplate	1	75	63055	5.16-18_1.00bh	5/16-18 x 1" Button Hd Cap Screw	1
10	100149	250-8010	Feed Plate	1	76	100063	5.16-18cn	5/16-18 Coupling Nut	1
11	100076	303-8007	Feed Finger	1	77	63708	5.16-18 LN	5/16-18 Lock Nut	1
12	100078	403-8007	Brake Shoe	1	78	64216	5.16-24_1.00ssf	5/16-24 x 1" Socket Hd Set Screw	1
13	100443	403A-8010	Brake Lift Arm	1					
14	100151	500-8010	Rear Guide Rail	1					
15	100156	500A-8010	Rear Guide Top Plate	1					
16	100137	1000-8010	Front Guide Rail	1					
17	100152	1600-8010	Stripper	1					
18	62977	62977	Front Cut-off Pad Retainer	1					
19	62979	62979	Scrap Deflector	1					
20	100001	ED2-C-1	ETCO Edge Composite Frame - Machined	1					
21	63658	ED3	Plunger	1					
22	63709	ED4	Retainer	1					
23	63731	ED5	Feed Adjustment Guide Block	1					
24	63733	ED7	Cam Roll Pin	1					
25	63706	ED8	Cam Roller	1					
26	63704	ED9	Feed Adjustment Block	1					
27	64245	ED10	Feed Arm Pin	1					
28	63717	ED11	Gib	2					
29	63701	ED12	Feed Finger Shaft	1					
30	63705	ED13	Adjustable Feed Piston	1					
31	63700	ED14	Feed Arm	1					
32	63702	ED16	Feed Finger Retainer	1					
33	64121	ED19-C	Shim for Nylon Frame	1					
34	63659	ED44	Locating Dowel	1					
35	63732	ED45	Feed Finger Spring	1					
36	63712	ED50-S	Stripper Spacer	1					
37	63716	ED52	Pre-Feed Cam	1					
38	74491	GS-375	Guard Spacer	2					
39	74384	MX29-S	Slide Support	1					
40	74388	MX30-S	Support Anchor	1					
41	74390	MX32-S	Support Cover	1					
42	74407	MX33	Mounting Post	1					
43	74411	MX36	Dial Spacer	1					
44	74425	MX84-S	Brake Cam	1					
45	74426	MX85-S	Cam Pivot Pin	1					
46	74430	MX88-S	Lever	1					
47	72310	MX104	Wave Disc Spring	1					
48	78984	MX424-ITD-R	#8 Hardened Washer	1					
49	74578	4-034-875	Spring	1					
50	62481	Producto #MP-02	3/8" x 1" Blue Die Spring	2					
51	70739	McMaster-Carr #3126A53	Spring Plunger	1					
52	64213	McMaster Carr #98370A28	1/4" Hardened Flatwasher	1					
53	72069	McMaster Carr #98407A118	#8 E-Style Retaining Ring	2					
54	63735	MS24585-1453	Piston Spring	1					
55	73785	SPI 99-602-5	#10 Black Knurled Knob	2					
56	62040	1.8_1.00rp	1/8" x 1" Roll Pin	1					
57	63792	6-32_.25bh	#6-32 x 1/4" Button Hd Cap Screw	2					
58	63207	6-32_.25sh	#6-32 x 1/4" Socket Hd Cap Screw	4					
59	63544	6-32_.50sh	#6-32 x 1/2" Socket Hd Cap Screw	2					
60	63163	8-32_.25sh	#8-32 x 1/4" Socket Hd Cap Screw	1					
61	77097	8-32_.31bh	#8-32 x 5/16" Button Hd Cap Screw	1					
62	100091	8-32_.31sh	#8-32 x 5/16" Socket Hd Cap Screw	1					
63	61472	8-32_.38bh	#8-32 x 3/8" Button Hd Cap Screw	3					
64	63054	10-32_.25ss	#10-32 x 1/4" Socket Hd Set Screw	1					
65	76501	10-32_.50bh	#10-32 x 1/2" Button Hd Cap Screw	6					
66	63826	10-32_1.50sh	#10-32 x 1 1/2" Socket Hd Cap Screw	1					

NOTE: ITEMS MARKED IN BOLD TEXT ARE HIGH WEAR ITEMS



Assembly Drawing and Bill of Materials

Applicator Type: ETCO Edge Composite Frame - Side Feed
Terminal: DT420 DT975 DT985 (Edge CF)
B.O.M. #: 90041

Section 5

- NOTE:**
- (1) Items marked in bold text are high wear items.
 - (2) Use OEM replacement tooling only.
 - (3) Recommended machine speed for automatic equipment is a maximum of 3500 parts per hour.

REV	DATE	DESCRIPTION	BY	CHKD	APP'D
C	12/25/18	ECR# 5199 SCJ	SCJ		
B	12/15/17	ECR# 4904 SCJ	SCJ		
A	5/8/17	ECR# 4652 SCJ	SCJ		

REV	DATE	DESCRIPTION	BY	CHKD	APP'D
C	4/27/16	DT975 - ETCO Edge Composite Frame	SCJ		

REV	DATE	DESCRIPTION	BY	CHKD	APP'D
C	4/27/16	DT975 - ETCO Edge Composite Frame	SCJ		