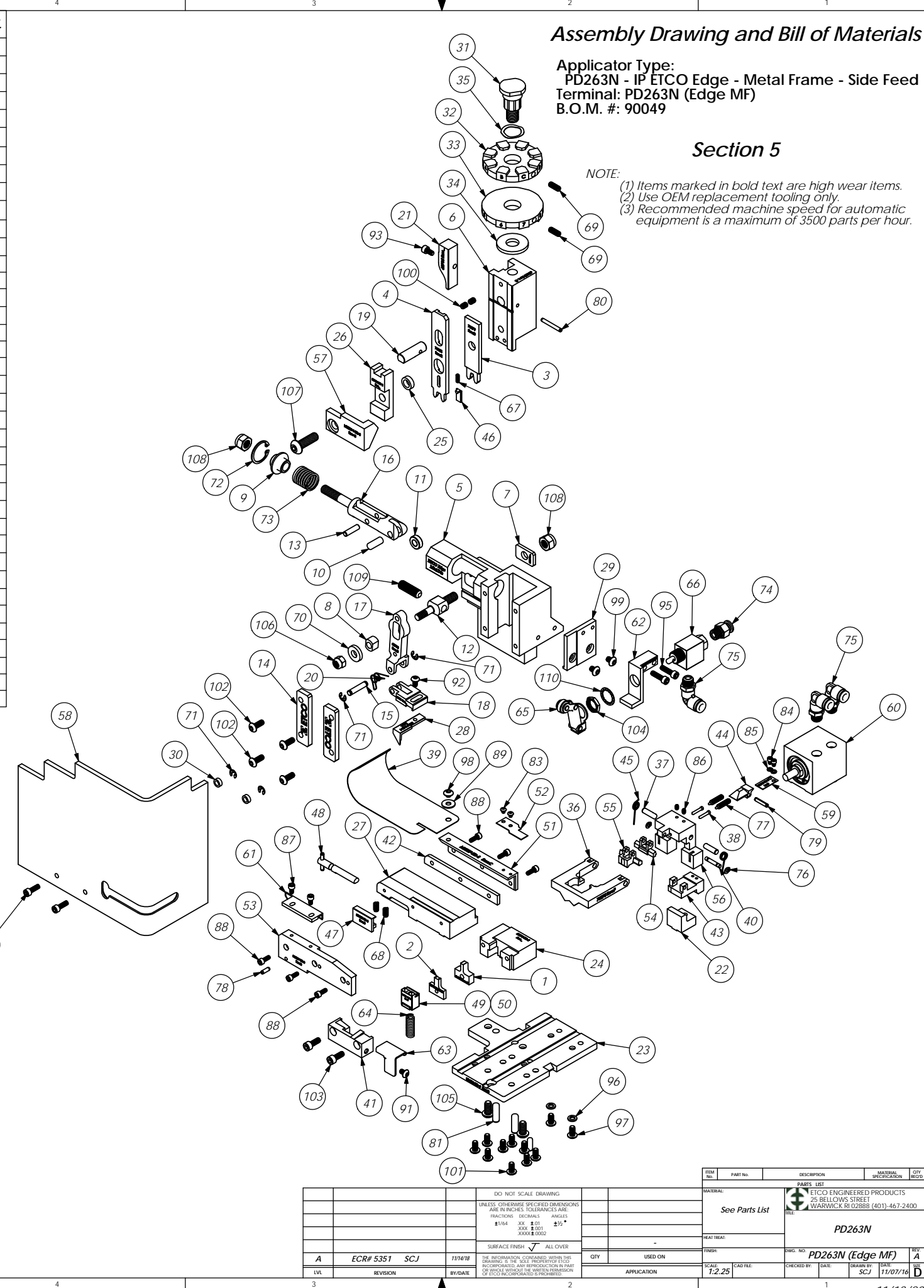


ITEM NO.	Part Code	PART NUMBER	DESCRIPTION	QTY.
1	76880	9-4005	Wire Anvil	1
2	76660	9A-4002	Insulation Anvil	1
3	76879	13-4005	Wire Rolling Tool	1
4	76881	14-4005	Insulation Rolling Tool	1
5	63660	ED2-M	Frame	1
6	63658	ED3	Plunger	1
7	63709	ED4	Retainer	1
8	63731	ED5	Feed Adjustment Guide Block	1
9	63714	ED6	Spring Retainer	1
10	63733	ED7	Cam Roll Pin	1
11	63706	ED8	Cam Roller	1
12	63704	ED9	Feed Adjustment Block	1
13	64245	ED10	Feed Arm Pin	1
14	63717	ED11	Gib	2
15	63701	ED12	Feed Finger Shaft	1
16	63705	ED13	Adjustable Feed Piston	1
17	63700	ED14	Feed Arm	1
18	63702	ED16	Feed Finger Retainer	1
19	63659	ED44	Locating Dowel	1
20	63732	ED45	Feed Finger Spring	1
21	63715	ED51	Post-feed Cam	1
22	100046	ED60-ITD-S	Insulation Pusher Stop	1
23	100047	ED302-ITD-S	Base Plate	1
24	100048	ED310-ITD-S	Die Holder	1
25	100049	ED315-ITD-S	Insulation Tool Spacer	1
26	100050	ED324-ITD-S	Cut-off Pad Driver	1
27	100051	ED330-ITD-S	Feed Plate	1
28	100052	ED337-2-ITD-S	Feed Finger	1
29	100053	ED358-1-ITD-S	Valve Mounting Plate	1
30	73888	GS-125	Guard Spacer	2
31	74407	MX33	Mounting Post	1
32	70690	MX34-A	Wire Crimp Dial	1
33	74409	MX35	Insulation Dial	1
34	74411	MX36	Dial Spacer	1
35	72310	MX104	Wave Disc Spring	1
36	76875	MX301-2-ITD-S	Latching Gate	1
37	76563	MX304-ITD-S	Hinge Pin	2
38	76564	MX305-ITD-S	Pin	2
39	76566	MX307-ITD-S	Stock Chute	1
40	76567	MX308-ITD-S	Latch Pivot Pin	1
41	78936	MX309-4-ITD-S	Cut-off Keeper	1
42	76570	MX311-ITD-S	Left Feed Shim (1/4")	1
43	72259	MX313-1-ITD-S	Insulation Pusher for 1/4" Terminal	1
44	76573	MX314-ITD-S	Catch	1
45	76575	MX316-ITD-S	Latch Spring	2
46	76578	MX319-ITD-S	Knock off	1
47	76579	MX320-ITD-S	Brake	1
48	76580	MX321-ITD-S	Brake Actuator	1
49	78854	MX326-6-ITD-S	Cut-off Pad	1
50	71917	MX326-9-ITD-S	Dual Wire Cut-off pad	1
51	76586	MX327-ITD-S	Left Feed Rail	1
52	76587	MX328-ITD-S	Hold Down Spring	1
53	76588	MX329-ITD-S	Right Feed Rail	1
54	76590	MX331-ITD-S	Latch (Automatic)	1
55	76592	MX333-ITD-S	Latch (1/4" Wire Stop)	1
56	76591	MX332-ITD-S	Support	1
57	72233	MX338-1-ITD-S	Arm Switch Cam (1 1/8" Stroke)	1
58	70745	MX339-ITD-S	Guard	1
59	72260	MX344-1-ITD-S	Leaf Spring	1
60	72099	MX348-ITD-S	Air Cylinder	1
61	72893	MX357-ITD-S	Bracket	1
62	61993	MX358-2-ITD-S	Valve Mounting Plate	1
63	78835	MX360-ITD-S	Scrap Retainer	1
64	72350	5-047x1.000	Compression Spring	1
65	72317	Clippard #12296	Cam Follower	1
66	72318	Clippard MJV-3	3-Way Valve	1
67	72315	LC-022A-4	Compression Spring	1
68	78681	LC-029B-3-M	Compression Spring	2
69	70739	McMaster-Carr #3126A53	Spring Plunger	2
70	64213	McMaster Carr #98370A28	1/4" Hardened Flatwasher	1
71	72069	McMaster Carr #98407A118	#8 E-Style Retaining Ring	4
72	63734	McMaster Carr #98455A_122	Retaining Ring	1

ITEM NO.	Part Code	PART NUMBER	DESCRIPTION	QTY.
73	63735	MS24585-1453	Piston Spring	1
74	73222	Pisco PC250-N1U	1/4" x 1/8" NPT Straight	1
75	72352	Pisco PL250-N1U	Ø1/4" x 1/8-NPT Elbow Fitting	3
76	63200	Truarc #5555-12	Retaining Ring	2
77	63201	Vlier #PH-51-P	Spring Plunger	2
78	63205	1.8_.38rp	Ø 1/8" x 3/8" Roll Pin	1
79	63053	1.8_.63rp	1/8" x 5/8" Roll Pin	1
80	62040	1.8_1.00rp	1/8" x 1" Roll Pin	1
81	64215	1.4_.75dp	1/4" x 3/4" Dowel Pin	1
82	63158	3.16_.50dp	Ø 3/16" x 1/2" Dowel Pin	2
83	63203	4-40_.13bh	#4-40 x 1/8" Button Hd Cap Screw	2
84	63204	4-40_.16sh	#4-40 x 5/32" Socket Hd Cap Screw	2
85	63202	4lw	#4 Lock Washer	2
86	63206	5-40_.19ssf	#5-40 x 3/16" Socket Set Screw	2
87	63207	6-32_.25sh	#6-32 x 1/4" Socket Hd Cap Screw	2
88	63209	6-32_.38sh	#6-32 x 3/8" Socket Hd Cap Screw	6
89	63210	8fw	#8 Flatwasher	1
90	63211	8-32_.13ssf	#8-32 x 1/8" Socket Hd Set Screw	2
91	63212	8-32_.25bh	#8-32 x 1/4" Button Hd Cap Screw	1
92	77097	8-32_.31bh	#8-32 x 5/16" Button Hd Cap Screw	1
93	100091	8-32_.31sh	#8-32 x 5/16" Socket Hd Cap Screw	1
94	63164	8-32_.50sh	#8-32 x 1/2" Socket Hd Cap Screw	2
95	63162	8-32_.63sh	#8-32 x 5/8" Socket Hd Cap Screw	2
96	78517	10lw	#10 Lockwasher	2
97	63531	10-24_.38bh	#10-24 x 3/8" Button Hd Cap Screw	2
98	78327	10-32_.13bh	#10-32 x 1/8" Button Hd Cap Screw	1
99	78687	10-32_.25bh	#10-32 x 1/4" Button Hd Cap Screw	2
100	63054	10-32_.25ss	#10-32 x 1/4" Socket Hd Set Screw	2
101	78993	10-32_.38bh	#10-32 x 3/8" Button Hd Cap Screw	9
102	76501	10-32_.50bh	#10-32 x 1/2" Button Hd Cap Screw	4
103	63056	10-32_.50sh	#10-32 x 1/2" Socket Hd Cap Screw	2
104		15.32-32hn	15/32-32 Hex Nut	1
105	63632	1.4-20_.50bh	1/4-20 x 1/2" Button Hd Cap Screw	2
106	63707	1.4_20 LN	1/4-20 Lock Nut	1
107	63055	5.16-18_1.00bh	5/16-18 x 1" Button Hd Cap Screw	1
108	63708	5.16-18 LN	5/16-18 Lock Nut	2
109	64216	5.16-24_1.00ssf	5/16-24 x 1" Socket Hd Set Screw	1
110		1.2isw	1/2" Internal Star Washer	1

NOTE: ITEMS MARKED IN BOLD TEXT ARE HIGH WEAR ITEMS



Assembly Drawing and Bill of Materials

Applicator Type:
 PD263N - IP ETICO Edge - Metal Frame - Side Feed
 Terminal: PD263N (Edge MF)
 B.O.M. #: 90049

Section 5

NOTE:
 (1) Items marked in bold text are high wear items.
 (2) Use OEM replacement tooling only.
 (3) Recommended machine speed for automatic equipment is a maximum of 3500 parts per hour.

REV	DATE	BY/DATE	APP	DESCRIPTION	SCALE	DATE	BY/DATE	APP	DESCRIPTION
A		ECR# 5351 SCJ		1/14/18	1:2.25				

PART LIST		MATERIAL SPECIFICATION		OFF REC'D
QTY	DESCRIPTION	MATERIAL	QTY	REC'D

DO NOT SCALE DRAWING		UNLESS OTHERWISE SPECIFIED DIMENSIONS ARE IN INCHES TOLERANCES ARE FRACTIONS DECIMALS ANGLES	
1/16" 3/32" 1/8" 1/4" 3/8" 1/2" 5/8" 3/4" 1" 1 1/8" 1 1/4" 1 1/2" 1 3/4" 2" 2 1/4" 2 1/2" 3" 3 1/4" 3 1/2" 4" 4 1/4" 4 1/2" 5" 5 1/4" 5 1/2" 6" 6 1/4" 6 1/2" 7" 7 1/4" 7 1/2" 8" 8 1/4" 8 1/2" 9" 9 1/4" 9 1/2" 10" 10 1/4" 10 1/2" 11" 11 1/4" 11 1/2" 12" 12 1/4" 12 1/2" 13" 13 1/4" 13 1/2" 14" 14 1/4" 14 1/2" 15" 15 1/4" 15 1/2" 16" 16 1/4" 16 1/2" 17" 17 1/4" 17 1/2" 18" 18 1/4" 18 1/2" 19" 19 1/4" 19 1/2" 20" 20 1/4" 20 1/2" 21" 21 1/4" 21 1/2" 22" 22 1/4" 22 1/2" 23" 23 1/4" 23 1/2" 24" 24 1/4" 24 1/2" 25" 25 1/4" 25 1/2" 26" 26 1/4" 26 1/2" 27" 27 1/4" 27 1/2" 28" 28 1/4" 28 1/2" 29" 29 1/4" 29 1/2" 30" 30 1/4" 30 1/2" 31" 31 1/4" 31 1/2" 32" 32 1/4" 32 1/2" 33" 33 1/4" 33 1/2" 34" 34 1/4" 34 1/2" 35" 35 1/4" 35 1/2" 36" 36 1/4" 36 1/2" 37" 37 1/4" 37 1/2" 38" 38 1/4" 38 1/2" 39" 39 1/4" 39 1/2" 40" 40 1/4" 40 1/2" 41" 41 1/4" 41 1/2" 42" 42 1/4" 42 1/2" 43" 43 1/4" 43 1/2" 44" 44 1/4" 44 1/2" 45" 45 1/4" 45 1/2" 46" 46 1/4" 46 1/2" 47" 47 1/4" 47 1/2" 48" 48 1/4" 48 1/2" 49" 49 1/4" 49 1/2" 50" 50 1/4" 50 1/2" 51" 51 1/4" 51 1/2" 52" 52 1/4" 52 1/2" 53" 53 1/4" 53 1/2" 54" 54 1/4" 54 1/2" 55" 55 1/4" 55 1/2" 56" 56 1/4" 56 1/2" 57" 57 1/4" 57 1/2" 58" 58 1/4" 58 1/2" 59" 59 1/4" 59 1/2" 60" 60 1/4" 60 1/2" 61" 61 1/4" 61 1/2" 62" 62 1/4" 62 1/2" 63" 63 1/4" 63 1/2" 64" 64 1/4" 64 1/2" 65" 65 1/4" 65 1/2" 66" 66 1/4" 66 1/2" 67" 67 1/4" 67 1/2" 68" 68 1/4" 68 1/2" 69" 69 1/4" 69 1/2" 70" 70 1/4" 70 1/2" 71" 71 1/4" 71 1/2" 72" 72 1/4" 72 1/2" 73" 73 1/4" 73 1/2" 74" 74 1/4" 74 1/2" 75" 75 1/4" 75 1/2" 76" 76 1/4" 76 1/2" 77" 77 1/4" 77 1/2" 78" 78 1/4" 78 1/2" 79" 79 1/4" 79 1/2" 80" 80 1/4" 80 1/2" 81" 81 1/4" 81 1/2" 82" 82 1/4" 82 1/2" 83" 83 1/4" 83 1/2" 84" 84 1/4" 84 1/2" 85" 85 1/4" 85 1/2" 86" 86 1/4" 86 1/2" 87" 87 1/4" 87 1/2" 88" 88 1/4" 88 1/2" 89" 89 1/4" 89 1/2" 90" 90 1/4" 90 1/2" 91" 91 1/4" 91 1/2" 92" 92 1/4" 92 1/2" 93" 93 1/4" 93 1/2" 94" 94 1/4" 94 1/2" 95" 95 1/4" 95 1/2" 96" 96 1/4" 96 1/2" 97" 97 1/4" 97 1/2" 98" 98 1/4" 98 1/2" 99" 99 1/4" 99 1/2" 100" 100 1/4" 100 1/2" 101" 101 1/4" 101 1/2" 102" 102 1/4" 102 1/2" 103" 103 1/4" 103 1/2" 104" 104 1/4" 104 1/2" 105" 105 1/4" 105 1/2" 106" 106 1/4" 106 1/2" 107" 107 1/4" 107 1/2" 108" 108 1/4" 108 1/2" 109" 109 1/4" 109 1/2" 110" 110 1/4" 110 1/2" 111" 111 1/4" 111 1/2" 112" 112 1/4" 112 1/2" 113" 113 1/4" 113 1/2" 114" 114 1/4" 114 1/2" 115" 115 1/4" 115 1/2" 116" 116 1/4" 116 1/2" 117" 117 1/4" 117 1/2" 118" 118 1/4" 118 1/2" 119" 119 1/4" 119 1/2" 120" 120 1/4" 120 1/2" 121" 121 1/4" 121 1/2" 122" 122 1/4" 122 1/2" 123" 123 1/4" 123 1/2" 124" 124 1/4" 124 1/2" 125" 125 1/4" 125 1/2" 126" 126 1/4" 126 1/2" 127" 127 1/4" 127 1/2" 128" 128 1/4" 128 1/2" 129" 129 1/4" 129 1/2" 130" 130 1/4" 130 1/2" 131" 131 1/4" 131 1/2" 132" 132 1/4" 132 1/2" 133" 133 1/4" 133 1/2" 134" 134 1/4" 134 1/2" 135" 135 1/4" 135 1/2" 136" 136 1/4" 136 1/2" 137" 137 1/4" 137 1/2" 138" 138 1/4" 138 1/2" 139" 139 1/4" 139 1/2" 140" 140 1/4" 140 1/2" 141" 141 1/4" 141 1/2" 142" 142 1/4" 142 1/2" 143" 143 1/4" 143 1/2" 144" 144 1/4" 144 1/2" 145" 145 1/4" 145 1/2" 146" 146 1/4" 146 1/2" 147" 147 1/4" 147 1/2" 148" 148 1/4" 148 1/2" 149" 149 1/4" 149 1/2" 150" 150 1/4" 150 1/2" 151" 151 1/4" 151 1/2" 152" 152 1/4" 152 1/2" 153" 153 1/4" 153 1/2" 154" 154 1/4" 154 1/2" 155" 155 1/4" 155 1/2" 156" 156 1/4" 156 1/2" 157" 157 1/4" 157 1/2" 158" 158 1/4" 158 1/2" 159" 159 1/4" 159 1/2" 160" 160 1/4" 160 1/2" 161" 161 1/4" 161 1/2" 162" 162 1/4" 162 1/2" 163" 163 1/4" 163 1/2" 164" 164 1/4" 164 1/2" 165" 165 1/4" 165 1/2" 166" 166 1/4" 166 1/2" 167" 167 1/4" 167 1/2" 168" 168 1/4" 168 1/2" 169" 169 1/4" 169 1/2" 170" 170 1/4" 170 1/2" 171" 171 1/4" 171 1/2" 172" 172 1/4" 172 1/2" 173" 173 1/4" 173 1/2" 174" 174 1/4" 174 1/2" 175" 175 1/4" 175 1/2" 176" 176 1/4" 176 1/2" 177" 177 1/4" 177 1/2" 178" 178 1/4" 178 1/2" 179" 179 1/4" 179 1/2" 180" 180 1/4" 180 1/2" 181" 181 1/4" 181 1/2" 182" 182 1/4" 182 1/2" 183" 183 1/4" 183 1/2" 184" 184 1/4" 184 1/2" 185" 185 1/4" 185 1/2" 186" 186 1/4" 186 1/2" 187" 187 1/4" 187 1/2" 188" 188 1/4" 188 1/2" 189" 189 1/4" 189 1/2" 190" 190 1/4" 190 1/2" 191" 191 1/4" 191 1/2" 192" 192 1/4" 192 1/2" 193" 193 1/4" 193 1/2" 194" 194 1/4" 194 1/2" 195" 195 1/4" 195 1/2" 196" 196 1/4" 196 1/2" 197" 197 1/4" 197 1/2" 198" 198 1/4" 198 1/2" 199" 199 1/4" 199 1/2" 200" 200 1/4" 200 1/2" 201" 201 1/4" 201 1/2" 202" 202 1/4" 202 1/2" 203" 203 1/4" 203 1/2" 204" 204 1/4" 204 1/2" 205" 205 1/4" 205 1/2" 206" 206 1/4" 206 1/2" 207" 207 1/4" 207 1/2" 208" 208 1/4" 208 1/2" 209" 209 1/4" 209 1/2" 210" 210 1/4" 210 1/2" 211" 211 1/4" 211 1/2" 212" 212 1/4" 212 1/2" 213" 213 1/4" 213 1/2" 214" 214 1/4" 214 1/2" 215" 215 1/4" 215 1/2" 216" 216 1/4" 216 1/2" 217" 217 1/4" 217 1/2" 218" 218 1/4" 218 1/2" 219" 219 1/4" 219 1/2" 220" 220 1/4" 220 1/2" 221" 221 1/4" 221 1/2" 222" 222 1/4" 222 1/2" 223" 223 1/4" 223 1/2" 224" 224 1/4" 224 1/2" 225" 225 1/4" 225 1/2" 226" 226 1/4" 226 1/2" 227" 227 1/4" 227 1/2" 228" 228 1/4" 228 1/2" 229" 229 1/4" 229 1/2" 230" 230 1/4" 230 1/2" 231" 231 1/4" 231 1/2" 232" 232 1/4" 232 1/2" 233" 233 1/4" 233 1/2" 234" 234 1/4" 234 1/2" 235" 235 1/4" 235 1/2" 236" 236 1/4" 236 1/2" 237" 237 1/4" 237 1/2" 238" 238 1/4" 238 1/2" 239" 239 1/4" 239 1/2" 240" 240 1/4" 240 1/2" 241" 241 1/4" 241 1/2" 242" 242 1/4" 242 1/2" 243" 243 1/4" 243 1/2" 244" 244 1/4" 244 1/2" 245" 245 1/4" 245 1/2" 246" 246 1/4" 246 1/2" 247" 247 1/4" 247 1/2" 248" 248 1/4" 248 1/2" 249" 249 1/4" 249 1/2" 250" 250 1/4" 250 1/2" 251" 251 1/4" 251 1/2" 252" 252 1/4" 252 1/2" 253" 253 1/4" 253 1/2" 254"			