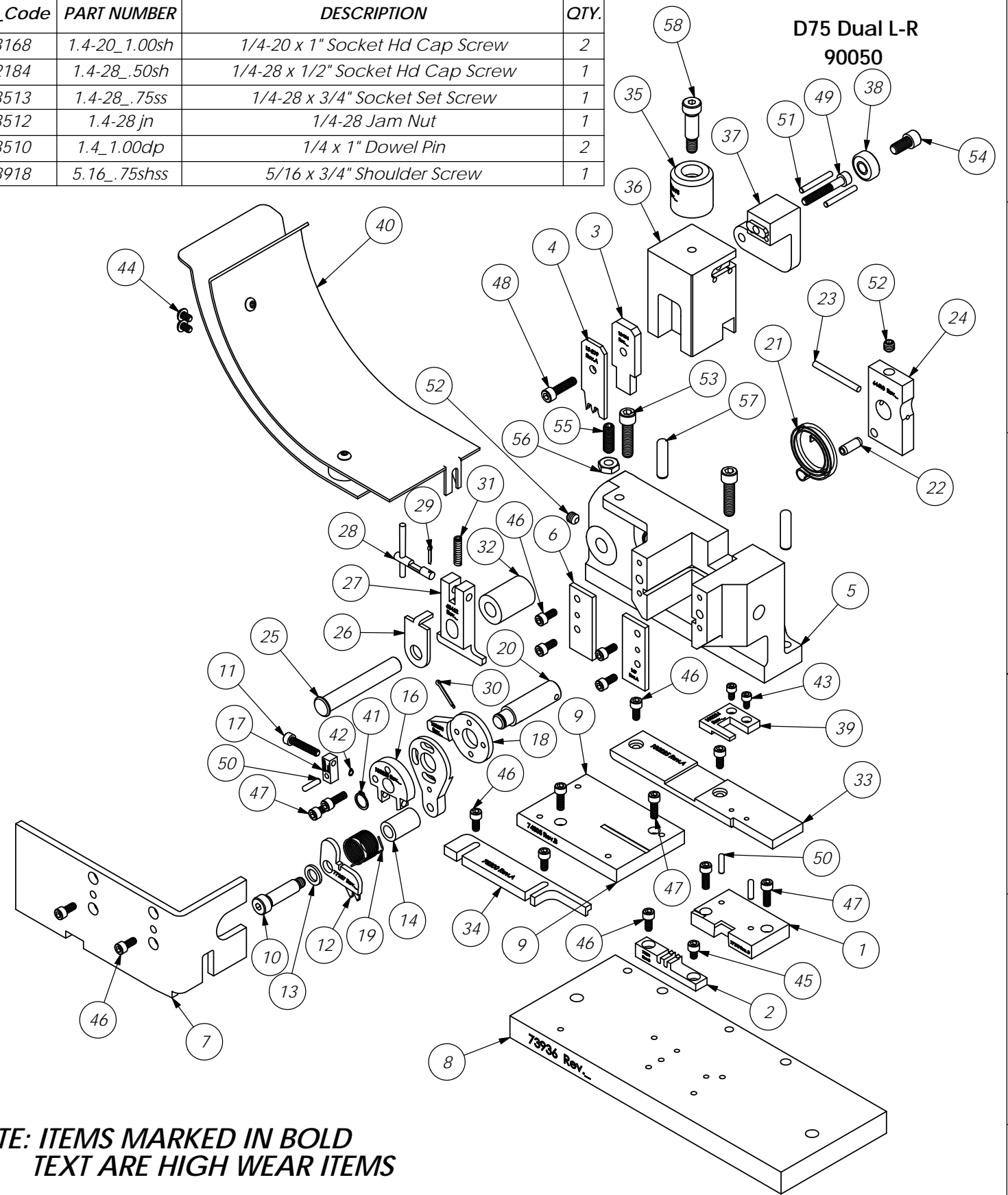


ITEM NO.	Part_Code	PART NUMBER	DESCRIPTION	QTY.
1	77170	8-227	Cut-off Die	1
2	77254	9-251	Anvil	1
3	77255	12-194	Cut-off Punch	1
4	77256	13-219	Wire Rolling Tool	1
5	63899	101	Casting	1
6	69859	169	Gib	2
7	75101	176-18	Guard	1
8	73936	203	Base Plate	1
9	74305	250-339	Die Plate	1
10	76713	301-5	Shoulder Screw	1
11	100231	301-25	#8-32 x 7/8" Socket Hd Cap Screw - Modified	1
12	77257	303-82	Dual Feed Finger	1
13	74697	304-.062	Feed Finger Spacer	1
14	100223	304-.812	Feed Finger Spacer	1
15	100227	305-25	Feed Finger Arm	1
16	100228	305A-25	Feed Finger Adjuster Body	1
17	100229	305B-25	Feed Finger Adjuster	1
18	100230	306-25	Feed Stop Arm	1
19	76743	307-16	Feed Finger Spring	1
20	100232	308-25	Feed Shaft	1
21	74402	310	Cam Return Spring	1
22	74403	311	Roll Pin	1
23	74404	312	Cam Taper Pin	1
24	64410	314-2	Cam	1
25	74495	401-Finished	Brake Shaft	1
26	74496	402	Spring Retainer	1
27	60462	403-125	Brake Body	1
28	74673	404_405as	Brake Cam Ass'y	1
29	74675	406	Cotter Pin	1
30	78981	406-1	Cotter Pin	1
31	74676	407	Brake Spring	1
32	73464	408-1.110	Brake Bushing	1
33	100225	500-341	Rear Guide Rail	1
34	75200	1000-4	Adjustable Front Guide	1
35	77918	1102-FS	Floating Shank	1
36	77919	1102-FS-1	Plunger	1
37	75710	1125-Finished	Cam Roller Bracket	1
38	75719	1142	Cam Roller Bearing	1
39	100224	1600-69	Stripper	1
40	100226	1800-10	Double Chute	1
41	-	97633A170	External Retaining Ring	1
42	-	98410A107	Steel External Retaining Ring	1
43	63207	6-32_.25sh	#6-32 x 1/4" Socket Hd Cap Screw	2
44	63212	8-32_.25bh	#8-32 x 1/4" Button Hd Cap Screw	2
45	63163	8-32_.25sh	#8-32 x 1/4" Socket Hd Cap Screw	1
46	63161	8-32_.38sh	#8-32 x 3/8" Socket Hd Cap Screw	11
47	63164	8-32_.50sh	#8-32 x 1/2" Socket Hd Cap Screw	6
48	63532	10-32_.75sh	#10-32 x 3/4" Socket Hd Cap Screw	1
49	77396	10-32_1.25sh	#10-32 x 1 1/4" Socket Hd Cap Screw	1
50	63507	1.8_.50dp	Ø 1/8" x 1/2" Dowel	3
51	62849	1.8_1.00dp	1/8" x 1" Dowel	2
52	63511	1.4-20_.25ssf	1/4-20 x 1/4" Socket Hd Set Screw	2

ITEM NO.	Part_Code	PART NUMBER	DESCRIPTION	QTY.
53	63168	1.4-20_1.00sh	1/4-20 x 1" Socket Hd Cap Screw	2
54	62184	1.4-28_.50sh	1/4-28 x 1/2" Socket Hd Cap Screw	1
55	63513	1.4-28_.75ss	1/4-28 x 3/4" Socket Set Screw	1
56	63512	1.4-28_jn	1/4-28 Jam Nut	1
57	63510	1.4_1.00dp	1/4 x 1" Dowel Pin	2
58	78918	5.16_.75shss	5/16 x 3/4" Shoulder Screw	1



NOTE: ITEMS MARKED IN BOLD TEXT ARE HIGH WEAR ITEMS

ITEM NO.	PART No.	DESCRIPTION	MATERIAL SPECIFICATION	QTY	RECD
PARTS LIST					
See Parts List		ETCO ENGINEERED PRODUCTS 25 BELLOWS STREET WARWICK RI 02888 (401)-467-2400			
D75 Dual Feed - L to R					
D75 Dual L-R					
SCALE: 1:2					
DATE: 12/05/16					
DRAWN BY: SCJ					
DATE: 12/05/16					
SIZE: C					