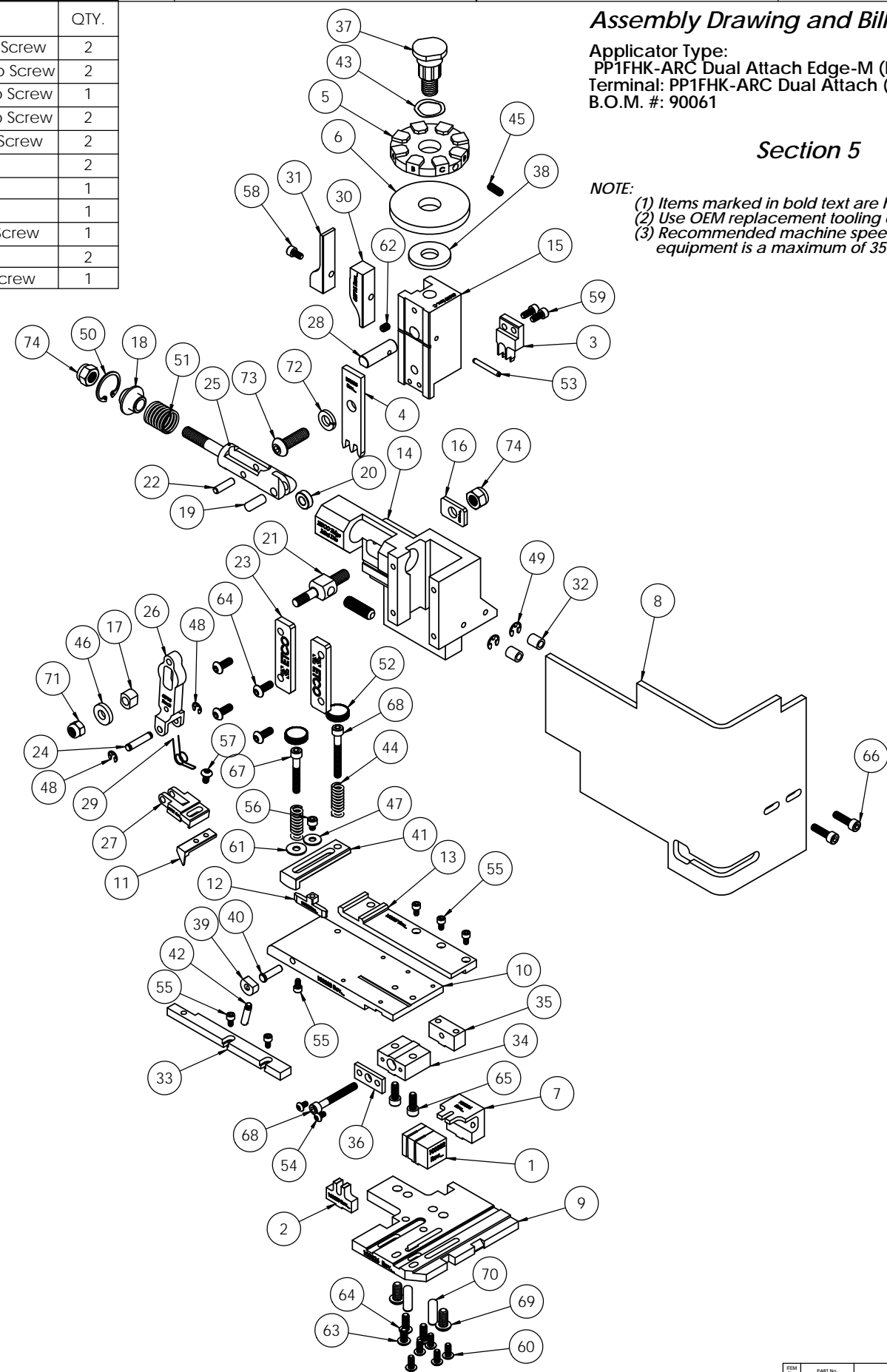


Assembly Drawing and Bill of Materials

Applicator Type:
 PP1FHK-ARC Dual Attach Edge-M (Metal Frame)
 Terminal: PP1FHK-ARC Dual Attach (Edge MF)
 B.O.M. #: 90061

Section 5

NOTE:
 (1) Items marked in bold text are high wear items.
 (2) Use OEM replacement tooling only.
 (3) Recommended machine speed for automatic equipment is a maximum of 3500 parts per hour.



NOTE: ITEMS MARKED IN BOLD TEXT ARE HIGH WEAR ITEMS

ITEM NO.	Part_Code	PART NUMBER	DESCRIPTION	QTY.	ITEM NO.	Part_Code	PART NUMBER	DESCRIPTION	QTY.
1	100322	8-8021	Cut-off Die	1	65	63056	10-32_50sh	#10-32 x 1/2" Socket Hd Cap Screw	2
2	100323	9-8021	Anvil	1	66	64215	10-32_69sh	#10-32 x 11/16" Socket Hd Cap Screw	2
3	100324	12-8021	Cut-off Punch	1	67	77396	10-32_1.25sh	#10-32 x 1 1/4" Socket Hd Cap Screw	1
4	100325	13-8021	Wire Rolling Tool	1	68	63826	10-32_1.50sh	#10-32 x 1 1/2" Socket Hd Cap Screw	2
5	74353	34-3086	Wire Crimp Dial	1	69	63632	1.4-20_50bh	1/4-20 x 1/2" Button Hd Cap Screw	2
6	100554	35-8000	No Insulation Dial	1	70	64215	1.4_75dp	1/4" x 3/4" Dowel Pin	2
7	100384	1600-8021	Stripper	1	71	63707	1.4_20 LN	1/4-20 Lock Nut	1
8	100387	199-8021	Safety Guard	1	72		5.16lw	5/16" Lockwasher	1
9	100326	200-8021	Baseplate	1	73	63055	5.16-18_1.00bh	5/16-18 x 1" Button Hd Cap Screw	1
10	100328	250-8021	Feed Plate	1	74	63708	5.16-18 LN	5/16-18 Lock Nut	2
11	64261	303-8001	Feed Finger	1	75	64216	5.16-24_1.00ssf	5/16-24 x 1" Socket Hd Set Screw	1
12	100385	403-8021	Brake Shoe	1					
13	100327	500-8021	Rear Guide Rail	1					
14	63660	ED2-M	Frame	1					
15	63658	ED3	Plunger	1					
16	63709	ED4	Retainer	1					
17	63731	ED5	Feed Adjustment Guide Block	1					
18	63714	ED6	Spring Retainer	1					
19	63733	ED7	Cam Roll Pin	1					
20	63706	ED8	Cam Roller	1					
21	63704	ED9	Feed Adjustment Block	1					
22	64245	ED10	Feed Arm Pin	1					
23	63717	ED11	Gib	2					
24	63701	ED12	Feed Finger Shaft	1					
25	63705	ED13	Adjustable Feed Piston	1					
26	63700	ED14	Feed Arm	1					
27	63702	ED16	Feed Finger Retainer	1					
28	63659	ED44	Locating Dowel	1					
29	63732	ED45	Feed Finger Spring	1					
30	63715	ED51	Post-feed Cam	1					
31	63716	ED52	Pre-feed Cam	1					
32	74491	GS-375	Guard Spacer	2					
33	74840	MX28-1-S	Front Guide Rail	1					
34	74384	MX29-S	Slide Support	1					
35	74388	MX30-S	Support Anchor	1					
36	74390	MX32-S	Support Cover	1					
37	74407	MX33	Mounting Post	1					
38	74411	MX36	Dial Spacer	1					
39	74425	MX84-S	Brake Cam	1					
40	74426	MX85-S	Cam Pivot Pin	1					
41	75915	MX87-1-S	Lift Arm	1					
42	74430	MX88-S	Lever	1					
43	72310	MX104	Wave Disc Spring	1					
44	62477	Dieco M110	Die Spring	2					
45	70739	McMaster-Carr #3126A53	Spring Plunger	1					
46	64213	McMaster Carr #98370A28	1/4" Hardened Flatwasher	1					
47	72519	McMaster Carr #98029A043	#8 Hardened Washer	1					
48	72069	McMaster Carr #98407A118	#8 E-Style Retaining Ring	2					
49	64214	McMaster Carr #98407A122	#10 E-Style Retaining Ring	2					
50	63734	McMaster Carr #98455A_122	Retaining Ring	1					
51	63735	MS24585-1453	Piston Spring	1					
52	73785	SPI 99-602-5	#10 Black Knurled Knob	2					
53	62040	1.8_1.00rp	1/8" x 1" Roll Pin	1					
54	63792	6-32_25bh	#6-32 x 1/4" Button Hd Cap Screw	2					
55	63207	6-32_25sh	#6-32 x 1/4" Socket Hd Cap Screw	6					
56	60265	8-32_19sh	#8-32 x 3/16" Socket Hd Cap Screw	1					
57	77097	8-32_31bh	#8-32 x 5/16" Button Hd Cap Screw	1					
58	100091	8-32_31sh	#8-32 x 5/16" Socket Hd Cap Screw	1					
59	63161	8-32_38sh	#8-32 x 3/8" Socket Hd Cap Screw	2					
60	61472	8-32_38bh	#8-32 x 3/8" Button Hd Cap Screw	5					
61	63753	10fw	#10 Flatwasher	1					
62	63054	10-32_25ss	#10-32 x 1/4" Socket Hd Set Screw	1					
63	78993	10-32_38bh	#10-32 x 3/8" Button Hd Cap Screw	1					
64	76501	10-32_50bh	#10-32 x 1/2" Button Hd Cap Screw	6					

DO NOT SCALE DRAWING		UNLESS OTHERWISE SPECIFIED DIMENSIONS ARE IN INCHES. TOLERANCES ARE:		FRACTIONS DECIMALS ANGLES		1/16" 0.015" 1/2°		1/32" 0.005" 1/4°		1/64" 0.001" 1/8°	
SURFACE FINISH		ALL OVER		FINISH		USED ON		SCALE		DATE	
A		ECR# 5199 SCJ		7/25/08		1:2		6/07/17		6/07/17	
LVL		REVISION		BY/DATE		APPLICATION		SCALE		DATE	

See Parts List

ETECO ENGINEERED PRODUCTS
 25 BELLOWS STREET
 WARWICK, RI 02888 (401) 467-2400

PP1FHK-ARC Dual Attach Edge-M (Metal Frame)

PP1FHK-ARC Dual Attach (Edge MF)

7/25/2018