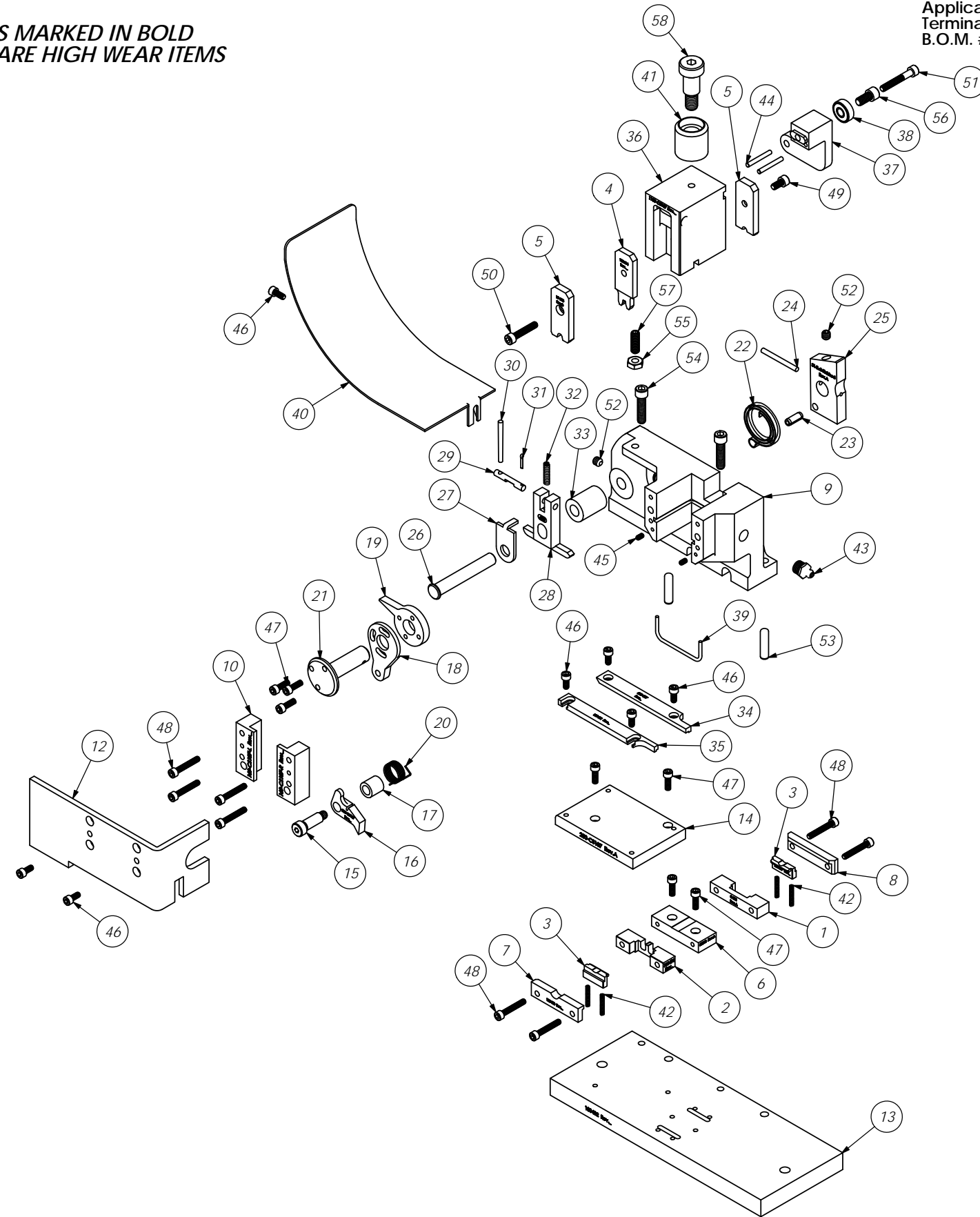


PARTS LIST				
Item	QTY.	Part Code	Part No./File Name	Description
1	1	67129	8-221	Die
2	1	100406	9-RED187F	Anvil
3	2	100405	12-RED187F	Cut-off Punch
4	1	100404	13-RED187F	Wire Rolling Tool
5	2	69682	15-055	Cut-off Punch Driver
6	1	60868	17-051	Die Spacer
7	1	100403	21-RED187F	Retainer
8	1	60280	21-032-2	Retainer
9	1	60706	101-101	Casting
10	1	60866	169-CS187-L	Left Gib
11	1	60867	169-CS187-R	Right Gib
12	1	60874	176-27	Guard
13	1	100402	205-RED187F	Base Plate
14	1	60870	250-CS187	Die Plate
15	1	76873	301-4	Shoulder Screw
16	1	60873	303-CS187	Feed Finger
17	1	66894	304-.500	Feed Finger Spacer
18	1	74393	305-Finished	Feed Finger Arm
19	1	69206	306-TH-1	Feed Stop Arm
20	1	67608	307-8	Spring
21	1	74400	308-Finished	Feed Shaft
22	1	74402	310	Cam Return Spring
23	1	74403	311	Roll Pin
24	1	74404	312	Cam Taper Pin
25	1	74410	314L-2-Finished	Cam
26	1	74495	401-Finished	Brake Shaft
27	1	74496	402	Spring Retainer
28	1	60599	403-RED187F1	Brake Body
29	1	74673	404	Brake Cam
30	1	74674	405	Taper Pin
31	1	74675	406	Cotter Pin
32	1	74676	407	Brake Spring
33	1	74565	408-1.000	Brake Spacer
34	1	60872	500-337	Rear Guide
35	1	100401	1000-RED187F	Front Guide
36	1	60664	1100-CS187	Plunger
37	1	75710	1125-Finished	Cam Roller Bracket
38	1	75719	1142	Cam Roller Bearing
39	1	75883	1600-122	Stripper
40	1	76186	1800	Stock Chute
41	1	77634	CS-110	Plunger Shank
42	4	72315	LC-022A-9	Compression Spring
43	1	63506	McMaster-Carr #1095K11	1/8 NPT Grease Fitting
44	2	62849	1.8_1.00dp	1/8" x 1" Dowel
45	2	63208	6-32_.25ssf	#6-32 x 1/4" Socket Hd Set Screw
46	7	63161	8-32_.38sh	#8-32 x 3/8" Socket Hd Cap Screw
47	7	63164	8-32_.50sh	#8-32 x 1/2" Socket Hd Cap Screw
48	8	63213	8-32_1.00sh	#8-32 x 1" Socket Hd Cap Screw
49	1	70110	10-32_.38sh	#10-32 x 3/8" Socket Hd Cap Screw
50	1	63155	10-32_1.00sh	#10-32 x 1" Socket Hd Cap Screw
51	1	77396	10-32_1.25sh	#10-32 x 1 1/4" Socket Hd Cap Screw
52	2	63511	1.4-20_.25ssf	1/4-20 x 1/4" Socket Hd Set Screw
53	2	63510	1.4_1.00dp	1/4 x 1" Dowel Pin
54	2	63168	1.4-20_1.00sh	1/4-20 x 1" Socket Hd Cap Screw
55	1	63512	1.4-28 jn	1/4-28 Jam Nut
56	1	62184	1.4-28_.50sh	1/4-28 x 1/2" Socket Hd Cap Screw
57	1	63513	1.4-28_.75ss	1/4-28 x 3/4" Socket Set Screw
58	1	62622	1.2_.75shss	1/2" x 3/4" Socket Hd Shoulder Screw

**NOTE: ITEMS MARKED IN BOLD TEXT ARE HIGH WEAR ITEMS**

**Assembly Drawing and Bill of Materials**

Applicator Type: RED187F-B - ECC Side  
Terminal: RED187F-B  
B.O.M. #: 90070



Approved  
For Tooling  
10/06/17

DO NOT SCALE DRAWING		UNLESS OTHERWISE SPECIFIED DIMENSIONS ARE IN INCHES TOLERANCES ARE FRACTIONS DECIMALS ANGLES	
1/16" .001 1/32" .002 1/8" .003 3/16" .004 1/4" .005 5/16" .006 3/8" .007 1/2" .008 5/8" .009 3/4" .010 7/8" .012 1" .015		SURFACE FINISH: ALL OVER	
THE INFORMATION CONTAINED HEREIN IS THE PROPERTY OF ETICO ENGINEERED PRODUCTS AND IS NOT TO BE REPRODUCED OR TRANSMITTED IN ANY FORM OR BY ANY MEANS, ELECTRONIC OR MECHANICAL, INCLUDING PHOTOCOPYING, RECORDING, OR BY ANY INFORMATION STORAGE AND RETRIEVAL SYSTEM, WITHOUT THE WRITTEN PERMISSION OF ETICO ENGINEERED PRODUCTS.		REVISION	
REV	DESCRIPTION	DATE	BY
1	RED187F-B	10/06/17	CSG