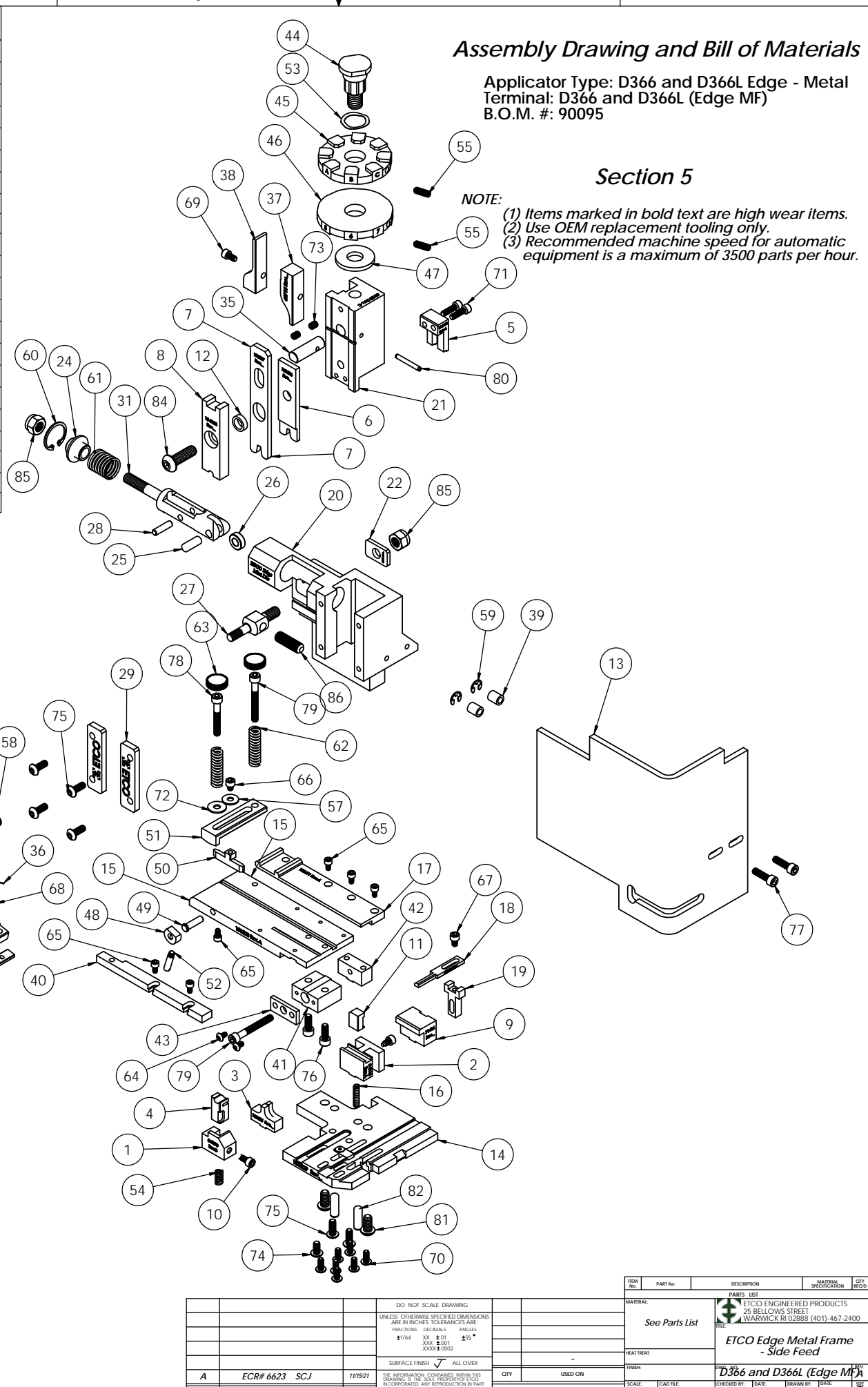


ITEM NO.	Part_Code	PART NUMBER	DESCRIPTION	QTY.
1	74440	8-3003	Front Cut-off Pad Retainer	1
2	71431	8-3110	Cut-Off Die	1
3	100525	9-8035	Anvil	1
4	76547	12-3033	Cut-off Pad	1
5	71433	12-3110	Cut-off Punch	1
6	100526	13-8035	Wire Rolling Tool	1
7	100527	14-8035	Insulation Rolling Tool	1
8	100022	15-8003	Cut-off Pad Driver	1
9	71436	26-3000-2	Backup Block	1
10	77265	26-3088	Locking Screw	1
11	71438	26-3110	Lifter	1
12	75505	152S-3001	IRT Spacer	1
13	76403	199-3005	Safety Guard	1
14	100529	200-8035	Baseplate	1
15	100528	250-8035	Feed Plate	1
16	74676	407	Brake Spring	1
17	100611	500-8035	Rear Guide Rail	1
18	71444	1600A-3110	Adjustable Stripper Block	1
19	74803	1600B-3000	Adjustable Stripper Holder	1
20	63660	ED2-M	Frame	1
21	63658	ED3	Plunger	1
22	63709	ED4	Retainer	1
23	63731	ED5	Feed Adjustment Guide Block	1
24	63714	ED6	Spring Retainer	1
25	63733	ED7	Cam Roll Pin	1
26	63706	ED8	Cam Roller	1
27	63704	ED9	Feed Adjustment Block	1
28	64245	ED10	Feed Arm Pin	1
29	63717	ED11	Gib	2
30	63701	ED12	Feed Finger Shaft	1
31	63705	ED13	Adjustable Feed Piston	1
32	63700	ED14	Feed Arm	1
33	63702	ED16	Feed Finger Retainer	1
34	63703	ED17-S	Feed Finger	1
35	63659	ED44	Locating Dowel	1
36	63732	ED45	Feed Finger Spring	1
37	63715	ED51	Post-feed Cam	1
38	63716	ED52	Pre-Feed Cam	1
39	74491	GS-375	Guard Spacer	2
40	74840	MX28-1-S	Front Guide Rail	1
41	74384	MX29-S	Slide Support	1
42	74388	MX30-S	Support Anchor	1
43	74390	MX32-S	Support Cover	1
44	74407	MX33	Mounting Post	1
45	72042	MX34-E	Wire Crimp Dial	1
46	74409	MX35	Insulation Dial	1
47	74411	MX36	Dial Spacer	1
48	74425	MX84-S	Brake Cam	1
49	74426	MX85-S	Cam Pivot Pin	1
50	74428	MX86-S	Brake Shoe	1
51	75915	MX87-1-S	Lift Arm	1
52	74430	MX88-S	Lever	1
53	72310	MX104	Wave Disc Spring	1
54	74578	4-034-875	Spring	1
55	70739	McMaster-Carr #3126A53	Spring Plunger	2
56	64213	McMaster Carr #98370A28	1/4" Hardened Flatwasher	1
57	72519	McMaster Carr #98029A043	#8 Hardened Washer	1
58	72069	McMaster Carr #98407A118	#8 E-Style Retaining Ring	2
59	64214	McMaster Carr #98407A122	#10 E-Style Retaining Ring	2
60	63734	McMaster Carr #98455A_122	Retaining Ring	1
61	63735	MS24585-1453	Piston Spring	1
62	62481	Producto #MP-02	3/8" x 1" Blue Die Spring	2
63	73785	SPI 99-602-5	#10 Black Knurled Knob	2
64	63792	6-32_.25bh	#6-32 x 1/4" Button Hd Cap Screw	2

ITEM NO.	Part_Code	PART NUMBER	DESCRIPTION	QTY.
65	63207	6-32_.25sh	#6-32 x 1/4" Socket Hd Cap Screw	6
66	60265	8-32_.19sh	#8-32 x 3/16" Socket Hd Cap Screw	1
67	63163	8-32_.25sh	#8-32 x 1/4" Socket Hd Cap Screw	1
68	77097	8-32_.31bh	#8-32 x 5/16" Button Hd Cap Screw	1
69	100091	8-32_.31sh	#8-32 x 5/16" Socket Hd Cap Screw	1
70	61472	8-32_.38bh	#8-32 x 3/8" Button Hd Cap Screw	7
71	100069	8-32_.56sh	#8-32 x 9/16" Socket Hd Cap Screw	2
72	63753	10fw	#10 Flatwasher	1
73	63054	10-32_.25ss	#10-32 x 1/4" Socket Hd Set Screw	2
74	78993	10-32_.38bh	#10-32 x 3/8" Button Hd Cap Screw	1
75	76501	10-32_.50bh	#10-32 x 1/2" Button Hd Cap Screw	6
76	63056	10-32_.50sh	#10-32 x 1/2" Socket Hd Cap Screw	2
77	64215	10-32_.69sh	#10-32 x 11/16" Socket Hd Cap Screw	2
78	77396	10-32_1.25sh	#10-32 x 1 1/4" Socket Hd Cap Screw	1
79	63826	10-32_1.50sh	#10-32 x 1 1/2" Socket Hd Cap Screw	2
80	62040	1.8_1.00rp	1/8" x 1" Roll Pin	1
81	63632	1.4-20_50bh	1/4-20 x 1/2" Button Hd Cap Screw	2
82	64215	1.4_.75dp	1/4" x 3/4" Dowel Pin	2
83	63707	1.4_20 LN	1/4-20 Lock Nut	1
84	63055	5.16-18_1.00bh	5/16-18 x 1" Button Hd Cap Screw	1
85	63708	5.16-18 LN	5/16-18 Lock Nut	2
86	64216	5.16-24_1.00ssf	5/16-24 x 1" Socket Hd Set Screw	1

NOTE: ITEMS MARKED IN BOLD TEXT ARE HIGH WEAR ITEMS



Assembly Drawing and Bill of Materials

Applicator Type: D366 and D366L Edge - Metal
Terminal: D366 and D366L (Edge MF)
B.O.M. #: 90095

Section 5

NOTE:
(1) Items marked in bold text are high wear items.
(2) Use OEM replacement tooling only.
(3) Recommended machine speed for automatic equipment is a maximum of 3500 parts per hour.

REV	DATE	DESCRIPTION	BY	CHKD	APP'D
1	7/15/21	SCJ			

DO NOT SCALE DRAWING	UNLESS OTHERWISE SPECIFIED DIMENSIONS ARE IN INCHES. TOLERANCES ARE:
FRACTIONS: DECIMALS: ANGLES:	±.004 ±.01 ±.015 ±.03
SURFACE FINISH: ALL OVER	
THE INFORMATION CONTAINED HEREIN IS THE PROPERTY OF ETCO ENGINEERED PRODUCTS AND IS NOT TO BE REPRODUCED OR TRANSMITTED IN ANY FORM OR BY ANY MEANS, ELECTRONIC OR MECHANICAL, INCLUDING PHOTOCOPYING, RECORDING, OR BY ANY INFORMATION STORAGE AND RETRIEVAL SYSTEM.	

See Parts List	ETCO ENGINEERED PRODUCTS 25 BELLOWS STREET WARWICK, RI 02888 (401)-467-2400
ETCO Edge Metal Frame - Side Feed	
D366 and D366L (Edge MF)	
SCALE: 1:2	DATE: 7/02/18