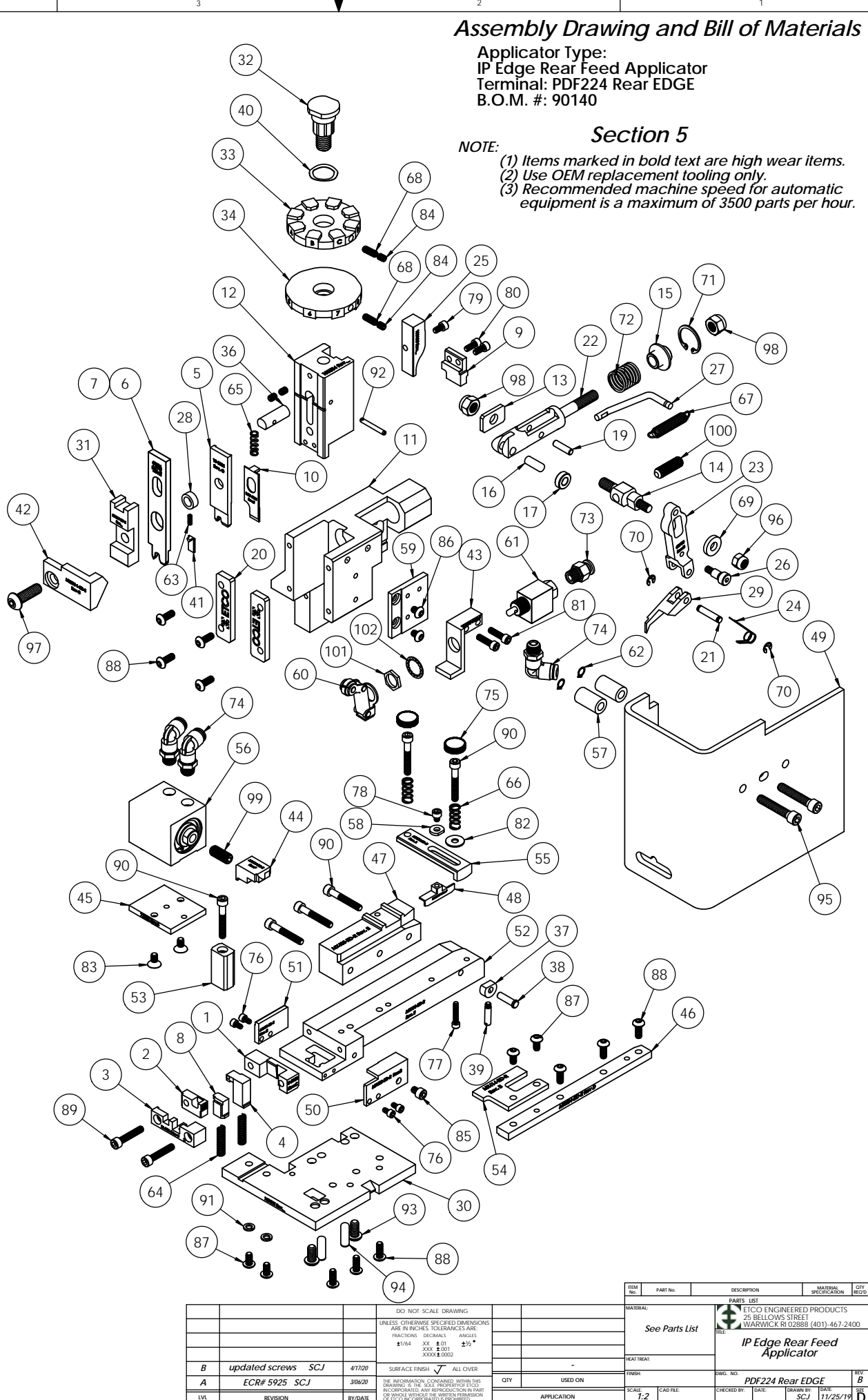


ITEM NO.	Part_Code	PART NUMBER	DESCRIPTION	QTY.
1	72884	8-5002	Cut-off Die	1
2	72206	9-5001	Wire Anvil	1
3	63225	9A-5001-2	Insulation Anvil	1
4	72885	12-5002	Cut-off Pad	1
5	72209	13-5001	Wire Rolling Tool	1
6	72208	14-5001	*Insulation Rolling Tool	1
7	63224	14-5001-2	Overlap Ins. Rolling Tool	1
8	72211	15-5001	Backing Dog	1
9	72886	15-5003	Cut-Off Driver	1
10	72224	1600-5001	Ejector Punch	1
11	100583	ED2-ITD-R	Frame (ITD Rear)	1
12	100584	ED3-ITD-R	Plunger	1
13	63709	ED4	Retainer	1
14	63731	ED5	Feed Adjustment Guide Block	1
15	63714	ED6	Spring Retainer	1
16	63733	ED7	Cam Roll Pin	1
17	63706	ED8	Cam Roller	1
18	63704	ED9	Feed Adjustment Block	1
19	64245	ED10	Feed Arm Pin	1
20	63717	ED11	Gib	2
21	63701	ED12	Feed Finger Shaft	1
22	63705	ED13	Adjustable Feed Piston	1
23	63700	ED14	Feed Arm	1
24	63732	ED45	Feed Finger Spring	1
25	100105	ED51-R	Post Feed Cam	1
26	100287	ED53-R	Pivot Pin	1
27	100288	ED100-R	Spring Bracket	1
28	100799	ED315-ITD-R	IRT Spacer	1
29	100786	ED419-ITD-R	Feed Finger	1
30	100585	ED403-ITD-R	Base Plate	1
31	100050	ED324-ITD-S	Cut-off Pad Driver	1
32	74407	MX33	Mounting Post	1
33	72234	MX34-G	Wire Crimp Dial	1
34	74409	MX35	Insulation Dial	1
35	74411	MX36	Dial Spacer	1
36	74412	MX44	Locating Dowel	1
37	74425	MX84-S	Brake Cam	1
38	74426	MX85-S	Cam Pivot Pin	1
39	74430	MX88-S	Lever	1
40	72310	MX104	Wave Disc Spring	1
41	76578	MX319-ITD-S	Knock off	1
42	72233	MX338-1-ITD-S	Arm Switch Cam	1
43	61993	MX358-2-ITD-S	Valve Mounting Plate	1
44	72203	MX401-ITD-R	Insulation Pusher	1
45	72202	MX402-ITD-R	CYLINDER MOUNTING BLOCK	1
46	72213	MX404-ITD-R	Right Guide Rail	1
47	72214	MX405-ITD-R	Left Guide Rail	1
48	72215	MX406-ITD-R	Brake Shoe	1
49	72216	MX407-ITD-R	Safety Guard	1
50	72217	MX408-ITD-R	Anvil Guide (Right)	1
51	72218	MX409-ITD-R	Anvil Guide Left	1
52	72219	MX410-ITD-R	Die Plate	1
53	72220	MX411-ITD-R	TERMINAL GUIDE BLOCK	1
54	72223	MX414-ITD-R	Slide Cover	1
55	72225	MX416-ITD-R	Lift Arm	1
56	72227	MX417-ITD-R	Slide Cylinder	1
57	72232	MX420-ITD-R	Guard Spacer	2
58	78984	MX424-ITD-R	#8 Hardened Washer	1
59	70021	MX425-ITD-R	Valve Mounting Plate	1
60	72317	Clippard #12296	Cam Follower	1
61	72318	Clippard MJV-3	3-Way Valve	1
62	74882	Irving 3100-25	Ø1/4" External Retaining Ring	2
63	72315	LC-022A-4	Compression Spring	2
64	72355	LC-032C-12-M	Compression Spring	2
65	72353	LC-038C-8-M	Ejector Punch Spring	1
66	77322	LC-045E-10-M	Spring	2
67	74611	LE-037CD-6	Extension Spring	1
68	70739	McMaster-Carr #3126A53	Spring Plunger	2

ITEM NO.	Part_Code	PART NUMBER	DESCRIPTION	QTY.
69	64213	McMaster Carr #98370A28	1/4" Hardened Flatwasher	1
70	72069	McMaster Carr #98407A118	#8 E-Style Retaining Ring	2
71	63734	McMaster Carr #98455A_122	Retaining Ring	1
72	63735	MS24585-1453	Piston Spring	1
73	73222	Pisco PC250-N1U	1/4" x 1/8" NPT Straight	1
74	72352	Pisco PL250-N1U	Ø1/4" x 1/8-NPT Elbow Fitting	3
75	73785	SPI 99-602-5	#10 Black Knurled Knob	2
76	63207	6-32_25sh	#6-32 x 1/4" Socket Hd Cap Screw	4
77	69493	6-32_75sh	#6-32 x 3/4" Socket Hd Cap Screw	1
78	60265	8-32_19sh	#8-32 x 3/16" Socket Hd Cap Screw	1
79	100091	8-32_31sh	#8-32 x 5/16" Socket Hd Cap Screw	1
80	63161	8-32_38sh	#8-32 x 3/8" Socket Hd Cap Screw	2
81	63162	8-32_63sh	#8-32 x 5/8" Socket Hd Cap Screw	2
82	63753	10fw	#10 Flatwasher	1
83		10-24_38fh	#10-24 x 3/8" Flat Hd Socket Screw	2
84	63054	10-32_25ss	#10-32 x 1/4" Socket Hd Set Screw	7
85	63473	10-32_25sh	#10-32 x 1/4" Socket Hd Cap Screw	1
86	78687	10-32_25bh	#10-32 x 1/4" Button Hd Cap Screw	2
87	78993	10-32_38bh	#10-32 x 3/8" Button Hd Cap Screw	4
88	76501	10-32_50bh	#10-32 x 1/2" Button Hd Cap Screw	10
89	63155	10-32_1.00sh	#10-32 x 1" Socket Hd Cap Screw	2
90	77396	10-32_1.25sh	#10-32 x 1 1/4" Socket Hd Cap Screw	6
91	78517	10lw	#10 Lockwasher	2
92	62040	1.8_1.00rp	1/8" x 1" Roll Pin	1
93	63632	1.4-20_50bh	1/4-20 x 1/2" Button Hd Cap Screw	2
94	64215	1.4_75dp	1/4" x 3/4" Dowel Pin	2
95		1.4-20_1.37sh	1/4-20 x 1-3/8" Socket Hd Cap Screw	2
96	63707	1.4_20 LN	1/4-20 Lock Nut	1
97	63055	5.16-18_1.00bh	5/16-18 x 1" Button Hd Cap Screw	1
98	63708	5.16-18 LN	5/16-18 Lock Nut	2
99	71086	5.16-24_75ssf	5/16-24 x 3/4" Socket Hd Set Screw	1
100	64216	5.16-24_1.00ssf	5/16-24 x 1" Socket Hd Set Screw	1
101		15.32_32 hex nut	Hex Nut	1
102		1.2isw	1/2" Internal Star Washer	1

NOTE: ITEMS MARKED IN BOLD TEXT ARE HIGH WEAR ITEMS



REV	DESCRIPTION	DATE	BY	CHKD	APP'D
B	updated screws	SCJ	4/17/20		
A	ECR# 5925	SCJ	3/26/20		

REV	PART No.	DESCRIPTION	MATERIAL SPECIFICATION	QTY	RECD
		See Parts List			

REV	DATE	BY	CHKD	APP'D
B	11/25/19	SCJ		

REV	DATE	BY	CHKD	APP'D
B	11/25/19	SCJ		