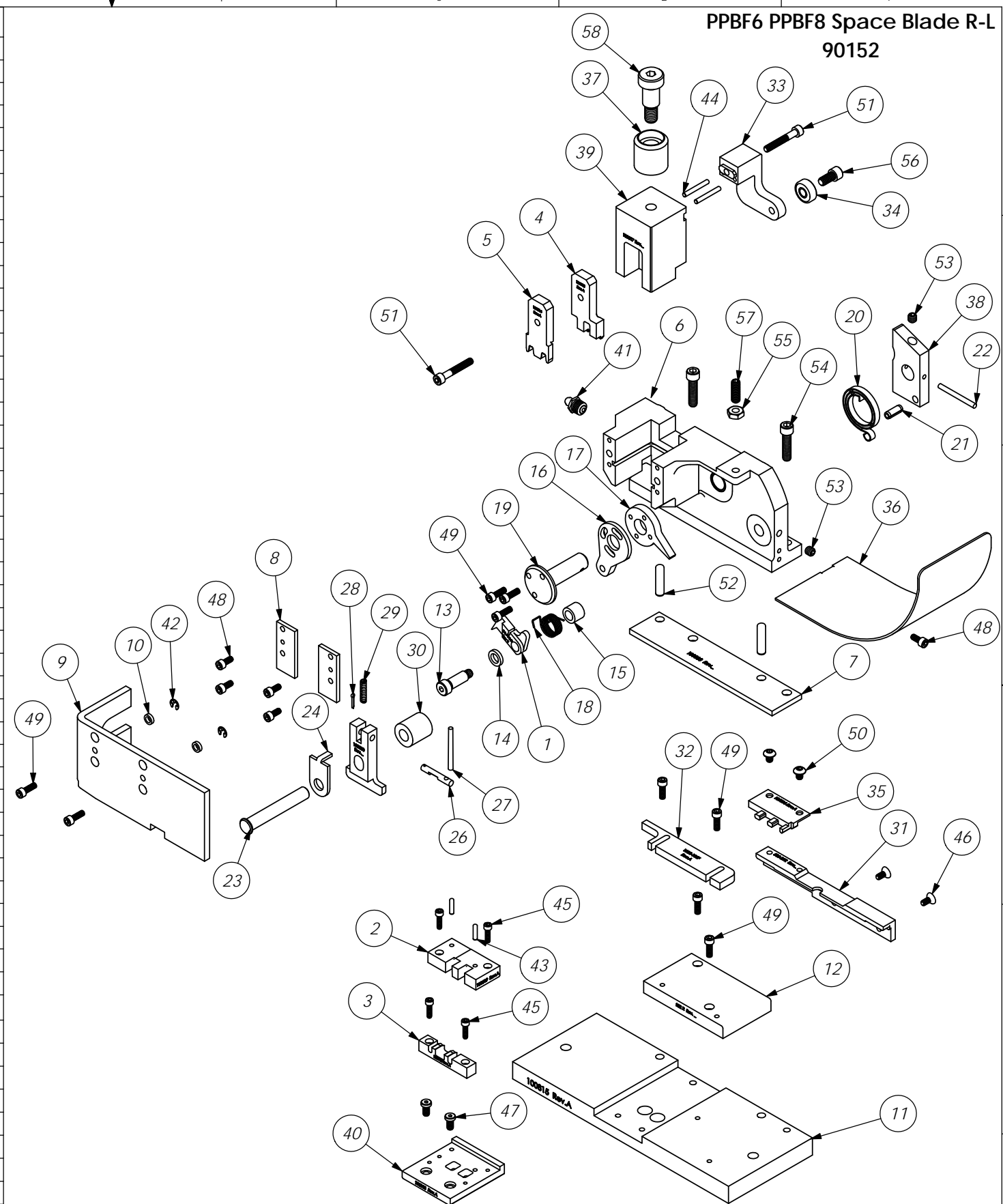


ITEM NO.	Part_Code	PART NUMBER	DESCRIPTION	QTY.
1	60626	7A-PPS-R	Feed Finger	1
2	100819	8B-PPBF-8R	Die	1
3	100812	9-PPBF-6_8R	Anvil	1
4	100813	12-PPBF-6_8R	Cut-Off Punch	1
5	100814	13-PPBF_6_8	Wire Rolling Tool	1
6	100832	101R-PPBF6-8	Top Casting	1
7	100833	116-PPBF6-8	Casting Spacer	1
8	67281	169-3	Gib	2
9	100831	176R-PPBF6-8	Guard	1
10	60226	176S-090	Guard Spacer	2
11	100815	205R-PPBF	Base Plate	1
12	63537	282R	Die Plate	1
13	76873	301-4	Shoulder Screw	1
14	69597	302-.100	Feed Finger Spacer	1
15	69497	304-.400	Feed Finger Spacer	1
16	74393	305-Finished	Feed Finger Arm	1
17	69206	306-TH-1	Feed Stop Arm	1
18	78092	307R-8	Feed Finger Spring	1
19	74400	308-Finished	Feed Shaft	1
20	74402	310	Cam Return Spring	1
21	74403	311	Roll Pin	1
22	74404	312	Cam Taper Pin	1
23	74495	401-Finished	Brake Shaft	1
24	74496	402	Spring Retainer	1
25	100830	403-PPBF6-8	Brake	1
26	74673	404	Brake Cam	1
27	74674	405	Taper Pin	1
28	74675	406	Cotter Pin	1
29	74676	407	Brake Spring	1
30	77154	408-.812	Brake Spacer	1
31	63539	500-21R	Rear Guide	1
32	69816	1000-156F	Front Guide	1
33	75716	1125R	Cam Roller Bracket	1
34	75719	1142	Cam Roller Bearing	1
35	100816	1600-PPBF-6_-8R	Stripper	1
36	76191	1805	Stock Chute	1
37	77634	CS-110	Plunger Shank	1
38	63542	CS-314L-156	Cam	1
39	100817	CS-PPBFR	Plunger	1
40	100818	CS-TH-PPBF-8R	Slide Tool Holder	1
41	63506	McMaster-Carr #1095K11	1/8 NPT Grease Fitting	1
42	72069	McMaster Carr #98407A118	#8 E-Style Retaining Ring	2
43	63507	1.8_.50dp	Ø 1/8" x 1/2" Dowel	2
44	62849	1.8_1.00dp	1/8" x 1" Dowel	2
45	63544	6-32_.50sh	#6-32 x 1/2" Socket Hd Cap Screw	4
46	63508	8-32_.38fh	#8-32 x 3/8" Flat Hd Cap Screw	2
47	63157	10-32_.38lh	#10-32 x 3/8" Low Hd Cap Screw	2
48	63161	8-32_.38sh	#8-32 x 3/8" Socket Hd Cap Screw	5
49	63164	8-32_.50sh	#8-32 x 1/2" Socket Hd Cap Screw	9
50	78687	10-32_.25bh	#10-32 x 1/4" Button Hd Cap Screw	2
51	77396	10-32_1.25sh	#10-32 x 1 1/4" Socket Hd Cap Screw	2
52	63510	1.4_1.00dp	1/4 x 1" Dowel Pin	2
53	63511	1.4-20_.25ssf	1/4-20 x 1/4" Socket Hd Set Screw	2
54	63168	1.4-20_1.00sh	1/4-20 x 1" Socket Hd Cap Screw	2
55	63512	1.4-28_jn	1/4-28 Jam Nut	1
56	62184	1.4-28_.50sh	1/4-28 x 1/2" Socket Hd Cap Screw	1
57	63513	1.4-28_.75ss	1/4-28 x 3/4" Socket Set Screw	1
58	62622	1.2_.75shss	1/2" x 3/4" Socket Hd Shoulder Screw	1



**PPBF6 PPBF8 Space Blade R-L  
90152**

ITEM NO.	PART No.	DESCRIPTION	MATERIAL SPECIFICATION	QTY	RECD
PARTS LIST					
MATERIAL: See Parts List					
HEAT TREAT:					
FINISH:					
DWG. NO: PPBF6 PPBF8 Space Blade R-L					
SCALE: 2:5					
CHECKED BY: SCJ DATE: 5/07/20					
DRAWN BY: SCJ DATE: 5/07/20					
SIZE: C					

DO NOT SCALE DRAWING			
UNLESS OTHERWISE SPECIFIED DIMENSIONS ARE IN INCHES. TOLERANCES ARE:			
FRACTIONS	DECIMALS	ANGLES	
±1/64	.XX ±.01	±1/2°	
	.XXX ±.001		
	.XXXX ±.0002		
SURFACE FINISH: ALL OVER			
THE INFORMATION CONTAINED WITHIN THIS DRAWING IS THE SOLE PROPERTY OF ETCO. INCORPORATED. ANY REPRODUCTION IN PART OR WHOLE WITHOUT THE WRITTEN PERMISSION OF ETCO INCORPORATED IS PROHIBITED.			
A	ECR# 6034	SCJ	6/30/20
LVL	REVISION	BY/DATE	APPLICATION