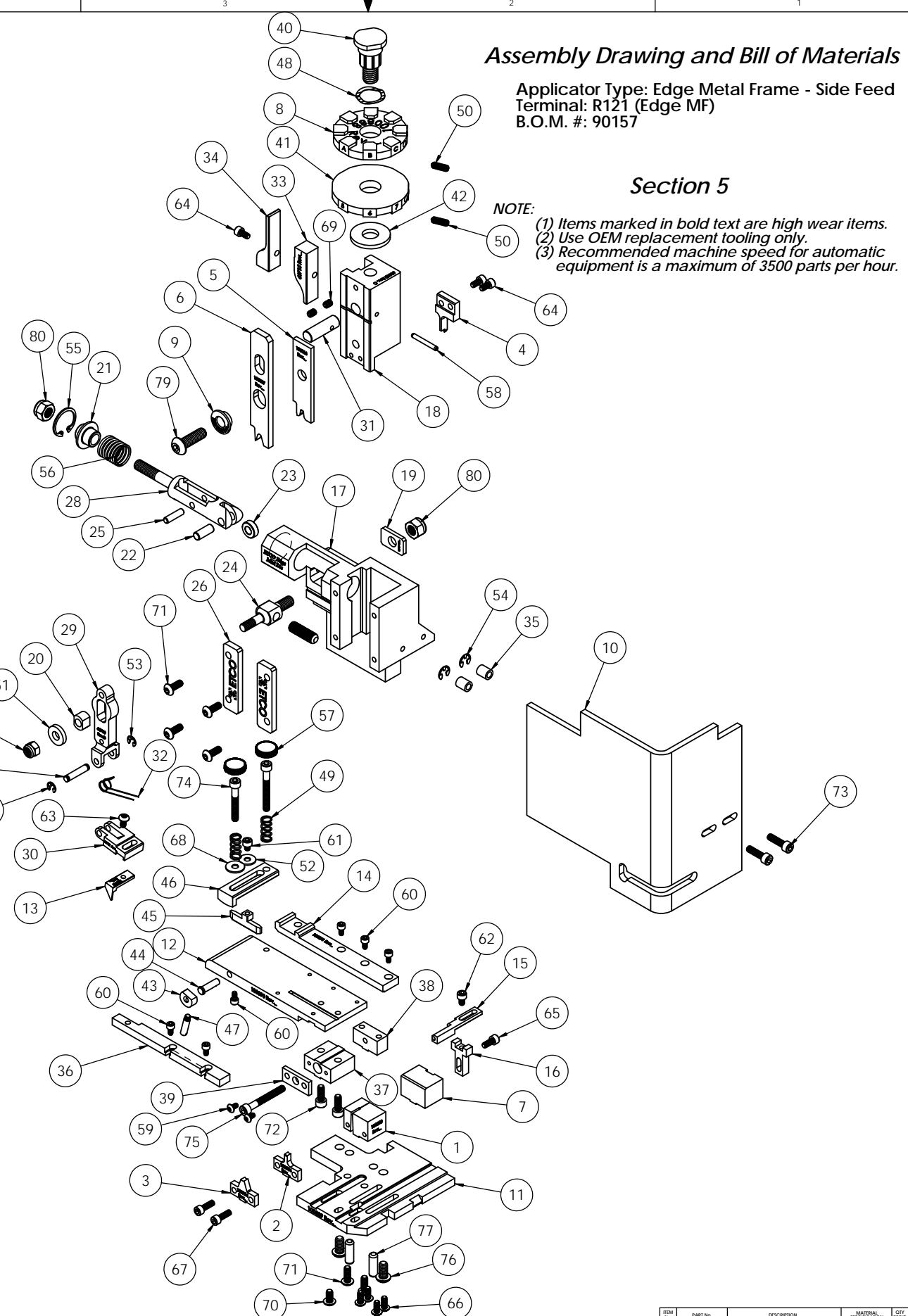


ITEM NO.	Part_Code	PART NUMBER	DESCRIPTION	QTY.	ITEM NO.	Part_Code	PART NUMBER	DESCRIPTION	QTY.
1	100883	8-8062	Cut-off Die	1	66	61472	8-32_.38bh	#8-32 x 3/8" Button Hd Cap Screw	4
2	100884	9-8062	Anvil	1	67	63164	8-32_.50sh	#8-32 x 1/2" Socket Hd Cap Screw	2
3	100924	9A-8062	Insulation Anvil	1	68	63753	10fw	#10 Flatwasher	1
4	100885	12-8062	Cut-off Punch	1	69	63054	10-32_.25ss	#10-32 x 1/4" Socket Hd Set Screw	2
5	100886	13-8062	Wire Rolling Tool	1	70	78993	10-32_.38bh	#10-32 x 3/8" Button Hd Cap Screw	1
6	100887	14-8062	Insulation Rolling Tool	1	71	76501	10-32_.50bh	#10-32 x 1/2" Button Hd Cap Screw	6
7	74802	26-3000	Backup Block	1	72	63056	10-32_.50sh	#10-32 x 1/2" Socket Hd Cap Screw	2
8	100888	34-8062	Wire Crimp Dial	1	73	64215	10-32_.69sh	#10-32 x 11/16" Socket Hd Cap Screw	2
9	63728	188S-3002	Insulation Tool Spacer	1	74	77396	10-32_1.25sh	#10-32 x 1 1/4" Socket Hd Cap Screw	1
10	76403	199-3005	Safety Guard	1	75	63826	10-32_1.50sh	#10-32 x 1 1/2" Socket Hd Cap Screw	2
11	100889	200-8062	Baseplate	1	76	63632	1.4-20_.50bh	1/4-20 x 1/2" Button Hd Cap Screw	2
12	100890	250-8062	Feed Plate	1	77	64215	1.4_.75dp	1/4" x 3/4" Dowel Pin	2
13	100135	303-8002	Feed Finger	1	78	63707	1.4_20 LN	1/4-20 Lock Nut	1
14	100891	500-8062	Rear Guide Rail	1	79	63055	5.16-18_1.00bh	5/16-18 x 1" Button Hd Cap Screw	1
15	76681	1600A-3002	Adjustable Stripper Block	1	80	63708	5.16-18 LN	5/16-18 Lock Nut	2
16	74803	1600B-3000	Adjustable Stripper Holder	1	81	64216	5.16-24_1.00ssf	5/16-24 x 1" Socket Hd Set Screw	1
17	63660	ED2-M	Frame	1					
18	63658	ED3	Plunger	1					
19	63709	ED4	Retainer	1					
20	63731	ED5	Feed Adjustment Guide Block	1					
21	63714	ED6	Spring Retainer	1					
22	63733	ED7	Cam Roll Pin	1					
23	63706	ED8	Cam Roller	1					
24	63704	ED9	Feed Adjustment Block	1					
25	64245	ED10	Feed Arm Pin	1					
26	63717	ED11	Gib	2					
27	63701	ED12	Feed Finger Shaft	1					
28	63705	ED13	Adjustable Feed Piston	1					
29	63700	ED14	Feed Arm	1					
30	63702	ED16	Feed Finger Retainer	1					
31	63659	ED44	Locating Dowel	1					
32	63732	ED45	Feed Finger Spring	1					
33	63715	ED51	Post-feed Cam	1					
34	63716	ED52	Pre-feed Cam	1					
35	74491	GS-375	Guard Spacer	2					
36	74840	MX28-1-S	Front Guide Rail	1					
37	74384	MX29-S	Slide Support	1					
38	74388	MX30-S	Support Anchor	1					
39	74390	MX32-S	Support Cover	1					
40	74407	MX33	Mounting Post	1					
41	74409	MX35	Insulation Dial	1					
42	74411	MX36	Dial Spacer	1					
43	74425	MX84-S	Brake Cam	1					
44	74426	MX85-S	Cam Pivot Pin	1					
45	74428	MX86-S	Brake Shoe	1					
46	75178	MX87-S	Lift Arm	1					
47	74430	MX88-S	Lever	1					
48	72310	MX104	Wave Disc Spring	1					
49	77322	LC-045E-10-M	Spring	2					
50	70739	McMaster-Carr #3126A53	Spring Plunger	2					
51	64213	McMaster Carr #98370A28	1/4" Hardened Flatwasher	1					
52	72519	McMaster Carr #98029A043	#8 Hardened Washer	1					
53	72069	McMaster Carr #98407A118	#8 E-Style Retaining Ring	2					
54	64214	McMaster Carr #98407A122	#10 E-Style Retaining Ring	2					
55	63734	McMaster Carr #98455A_122	Retaining Ring	1					
56	63735	MS24585-1453	Piston Spring	1					
57	73785	SPI 99-602-5	#10 Black Knurled Knob	2					
58	62040	1.8_1.00rp	1/8" x 1" Roll Pin	1					
59	63792	6-32_.25bh	#6-32 x 1/4" Button Hd Cap Screw	2					
60	63207	6-32_.25sh	#6-32 x 1/4" Socket Hd Cap Screw	6					
61	60265	8-32_.19sh	#8-32 x 3/16" Socket Hd Cap Screw	1					
62	63163	8-32_.25sh	#8-32 x 1/4" Socket Hd Cap Screw	1					
63	77097	8-32_.31bh	#8-32 x 5/16" Button Hd Cap Screw	1					
64	100091	8-32_.31sh	#8-32 x 5/16" Socket Hd Cap Screw	3					
65	63161	8-32_.38sh	#8-32 x 3/8" Socket Hd Cap Screw	1					

**NOTE: ITEMS MARKED IN BOLD TEXT ARE HIGH WEAR ITEMS**



**Assembly Drawing and Bill of Materials**

Applicator Type: Edge Metal Frame - Side Feed  
Terminal: R121 (Edge MF)  
B.O.M. #: 90157

**Section 5**

**NOTE:**  
(1) Items marked in bold text are high wear items.  
(2) Use OEM replacement tooling only.  
(3) Recommended machine speed for automatic equipment is a maximum of 3500 parts per hour.

REV	DESCRIPTION	DATE	BY/DATE	APP	SCALE	APP	DATE	BY/DATE	APP
1					1:2				

REV	DESCRIPTION	DATE	BY/DATE	APP
1				

REV	DESCRIPTION	DATE	BY/DATE	APP
1				

REV	DESCRIPTION	DATE	BY/DATE	APP
1				

REV	DESCRIPTION	DATE	BY/DATE	APP
1				

REV	DESCRIPTION	DATE	BY/DATE	APP
1				

REV	DESCRIPTION	DATE	BY/DATE	APP
1				