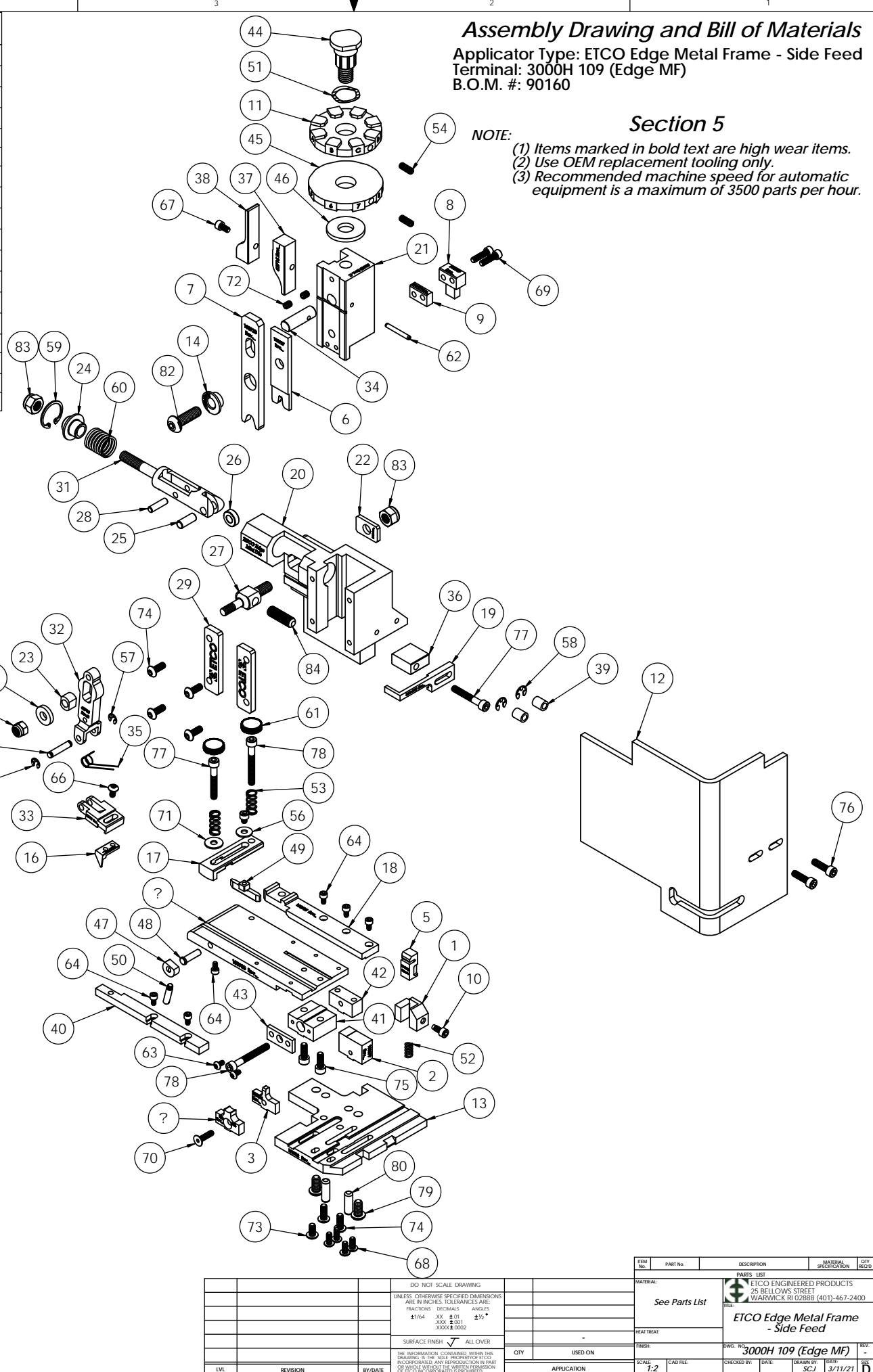


ITEM NO.	Part_Code	PART NUMBER	DESCRIPTION	QTY.
1	74287	8-3000	Cut-off Pad Retainer	1
2	<b>100879</b>	<b>8-8065</b>	<b>Cut-off Die</b>	<b>1</b>
3	<b>100881</b>	<b>9-8065</b>	<b>Anvil</b>	<b>1</b>
4	<b>100986</b>	<b>9A-8065</b>	<b>Insulation Anvil</b>	<b>1</b>
5	<b>74286</b>	<b>12-3000</b>	<b>Rear cut-off pad</b>	<b>1</b>
6	<b>100927</b>	<b>13-8065</b>	<b>Wire Rolling Tool</b>	<b>1</b>
7	<b>100928</b>	<b>14-8065</b>	<b>Insulation Rolling Tool</b>	<b>1</b>
8	100929	15-8065	Cut-off Pad Driver	1
9	100930	15S-8065	Cut-off Driver Spacer	1
10	77265	26-3088	Locking Screw	1
11	100931	34-8065	Wire Crimp Dial	1
12	76403	199-3005	Safety Guard	1
13	100932	200-8065	Baseplate	1
14	100969	233S-3002	Insulation Tool Spacer	1
15	100933	250-8065	Feed Plate	1
16	100246	303-8016	Feed Finger	1
17	100934	403A-8065	Lift Arm	1
18	100935	500-8065	Rear Guide Rail	1
19	63711	1600-8000	Stripper	1
20	63660	ED2-M	Frame	1
21	63658	ED3	Plunger	1
22	63709	ED4	Retainer	1
23	63731	ED5	Feed Adjustment Guide Block	1
24	63714	ED6	Spring Retainer	1
25	63733	ED7	Cam Roll Pin	1
26	63706	ED8	Cam Roller	1
27	63704	ED9	Feed Adjustment Block	1
28	64245	ED10	Feed Arm Pin	1
29	63717	ED11	Gib	2
30	63701	ED12	Feed Finger Shaft	1
31	63705	ED13	Adjustable Feed Piston	1
32	63700	ED14	Feed Arm	1
33	63702	ED16	Feed Finger Retainer	1
34	63659	ED44	Locating Dowel	1
35	63732	ED45	Feed Finger Spring	1
36	63712	ED50-S	Stripper Spacer	1
37	63715	ED51	Post-feed Cam	1
38	63716	ED52	Pre-Feed Cam	1
39	74491	GS-375	Guard Spacer	2
40	74840	MX28-1-S	Front Guide Rail	1
41	74384	MX29-S	Slide Support	1
42	74388	MX30-S	Support Anchor	1
43	74390	MX32-S	Support Cover	1
44	74407	MX33	Mounting Post	1
45	74409	MX35	Insulation Dial	1
46	74411	MX36	Dial Spacer	1
47	74425	MX84-S	Brake Cam	1
48	74426	MX85-S	Cam Pivot Pin	1
49	74428	MX86-S	Brake Shoe	1
50	74430	MX88-S	Lever	1
51	72310	MX104	Wave Disc Spring	1
52	74578	4-034-875	Spring	1
53	77322	LC-045E-10-M	Spring	2
54	70739	McMaster-Carr #3126A53	Spring Plunger	2
55	64213	McMaster Carr #98370A28	1/4" Hardened Flatwasher	1
56	72519	McMaster Carr #98029A043	#8 Hardened Washer	1
57	72069	McMaster Carr #98407A118	#8 E-Style Retaining Ring	2
58	64214	McMaster Carr #98407A122	#10 E-Style Retaining Ring	2
59	63734	McMaster Carr #98455A_122	Retaining Ring	1
60	63735	MS24585-1453	Piston Spring	1
61	73785	SPI 99-602-5	#10 Black Knurled Knob	2
62	62040	1.8_1.00rp	1/8" x 1" Roll Pin	1
63	63792	6-32_25bh	#6-32 x 1/4" Button Hd Cap Screw	2
64	63207	6-32_25sh	#6-32 x 1/4" Socket Hd Cap Screw	6
65	60265	8-32_19sh	#8-32 x 3/16" Socket Hd Cap Screw	1
66	77097	8-32_31bh	#8-32 x 5/16" Button Hd Cap Screw	1

ITEM NO.	Part_Code	PART NUMBER	DESCRIPTION	QTY.
67	100091	8-32_31sh	#8-32 x 5/16" Socket Hd Cap Screw	1
68	61472	8-32_38bh	#8-32 x 3/8" Button Hd Cap Screw	4
69	63162	8-32_63sh	#8-32 x 5/8" Socket Hd Cap Screw	2
70	76799	8-32_63fh	#8-32 x 5/8 Flat Hd Cap Screw	1
71	63753	10fw	#10 Flatwasher	1
72	63054	10-32_25ss	#10-32 x 1/4" Socket Hd Set Screw	2
73	78993	10-32_38bh	#10-32 x 3/8" Button Hd Cap Screw	1
74	76501	10-32_50bh	#10-32 x 1/2" Button Hd Cap Screw	6
75	63056	10-32_50sh	#10-32 x 1/2" Socket Hd Cap Screw	2
76	64215	10-32_69sh	#10-32 x 11/16" Socket Hd Cap Screw	2
77	77396	10-32_1.25sh	#10-32 x 1 1/4" Socket Hd Cap Screw	2
78	63826	10-32_1.50sh	#10-32 x 1 1/2" Socket Hd Cap Screw	2
79	63632	1.4-20_50bh	1/4-20 x 1/2" Button Hd Cap Screw	2
80	64215	1.4_75dp	1/4" x 3/4" Dowel Pin	2
81	63707	1.4_20 LN	1/4-20 Lock Nut	1
82	63055	5.16-18_1.00bh	5/16-18 x 1" Button Hd Cap Screw	1
83	63708	5.16-18 LN	5/16-18 Lock Nut	2
84	64216	5.16-24_1.00ssf	5/16-24 x 1" Socket Hd Set Screw	1

**NOTE: ITEMS MARKED IN BOLD TEXT ARE HIGH WEAR ITEMS**



**Assembly Drawing and Bill of Materials**  
 Applicator Type: ETCO Edge Metal Frame - Side Feed  
 Terminal: 3000H 109 (Edge MF)  
 B.O.M. #: 90160

**Section 5**

- NOTE:**
- (1) Items marked in bold text are high wear items.
  - (2) Use OEM replacement tooling only.
  - (3) Recommended machine speed for automatic equipment is a maximum of 3500 parts per hour.

REV	DESCRIPTION	DATE	BY/DATE	APP	SCALE	APP	DATE	BY/DATE	APP

REV	DESCRIPTION	DATE	BY/DATE	APP

REV	DESCRIPTION	DATE	BY/DATE	APP

REV	DESCRIPTION	DATE	BY/DATE	APP

REV	DESCRIPTION	DATE	BY/DATE	APP

REV	DESCRIPTION	DATE	BY/DATE	APP