

ITEM NO.	Part_Code	PART NUMBER	DESCRIPTION	QTY.
1	61263	8-3137	Rear Cut-off Die	1
2	61264	8A-3137	Front Cut-off Die	1
3	61267	9-3137	Wire Anvil	1
4	61268	12-3137	Cut-off Punch	1
5	61269	12A-3137	Cut-off Punch Spacer	1
6	61272	13-3137	Wire Rolling Tool	1
7	100952	26-3137-1	Hold-down	1
8	61270	34-3137	Wire Crimp Dial	1
9	100554	35-8000	No Insulation Dial	1
10	100936	200-8066	Baseplate	1
11	61233	250-3137	Feed Plate	1
12	100953	303-3137-1	Feed Finger	1
13	61273	403-3137	Brake Shoe	1
14	100099	ED2-R	Frame	1
15	100104	ED3-R	Plunger	1
16	63709	ED4	Retainer	1
17	63731	ED5	Feed Adjustment Guide Block	1
18	63714	ED6	Spring Retainer	1
19	63733	ED7	Cam Roll Pin	1
20	63706	ED8	Cam Roller	1
21	63704	ED9	Feed Adjustment Block	1
22	64245	ED10	Feed Arm Pin	1
23	63717	ED11	Gib	2
24	63701	ED12	Feed Finger Shaft	1
25	63705	ED13	Adjustable Feed Piston	1
26	63700	ED14	Feed Arm	1
27	63659	ED44	Locating Dowel	1
28	63732	ED45	Feed Finger Spring	1
29	100105	ED51-R	Post Feed Cam	1
30	100106	ED52-R	Pre-Feed Cam	1
31	100287	ED53-R	Pivot Pin	1
32	100288	ED100-R	Spring Bracket	1
33	100097	ED199-R	Safety Guard	1
34	100098	ED1600-R	Standard Stripper	1
35	74491	GS-375	Guard Spacer	2
36	72310	MX104	Wave Disc Spring	1
37	74407	MX33	Mounting Post	1
38	74411	MX36	Dial Spacer	1
39	74908	MX54-R	Slide Support	1
40	74817	MX56-R	Left Guide Rail	1
41	74818	MX57-R	Right Guide Rail	1
42	74820	MX91-R	Lifter Plate	1
43	74821	MX92-R	Brake Support	2
44	74822	MX93-R	Lifter	2
45	74823	MX94-R	Brake Shaft	1
46	74825	MX96-R	Brake Handle	1
47	74827	MX97-R	Retaining Ring	2
48	75342	LC-045E-6-M	Brake Spring	2
49	74611	LE-037CD-6	Extension Spring	1
50	70739	McMaster-Carr #3126A53	Spring Plunger	1
51	63735	MS24585-1453	Piston Spring	1
52	64213	McMaster Carr #98370A28	1/4" Hardened Flatwasher	1
53	72069	McMaster Carr #98407A118	#8 E-Style Retaining Ring	2
54	64214	McMaster Carr #98407A122	#10 E-Style Retaining Ring	2
55	63734	McMaster Carr #98455A_122	Retaining Ring	1
56	73785	SPI 99-602-5	#10 Black Knurled Knob	2
57	63164	8-32_.50sh	#8-32 x 1/2" Socket Hd Cap Screw	3
58	61472	8-32_.38bh	#8-32 x 3/8" Button Hd Cap Screw	4
59	63949	8-32_.88sh	#8-32 x 7/8" Socket Hd Cap Screw	4
60	63213	8-32_1.00sh	#8-32 x 1" Socket Hd Cap Screw	2
61	64215	10-32_.69sh	#10-32 x 11/16" Socket Hd Cap Screw	2
62	63054	10-32_.25ss	#10-32 x 1/4" Socket Hd Set Screw	4
63	63473	10-32_.25sh	#10-32 x 1/4" Socket Hd Cap Screw	1
64	78993	10-32_.38bh	#10-32 x 3/8" Button Hd Cap Screw	2
65	76501	10-32_.50bh	#10-32 x 1/2" Button Hd Cap Screw	8

ITEM NO.	Part_Code	PART NUMBER	DESCRIPTION	QTY.
66	63155	10-32_1.00sh	#10-32 x 1" Socket Hd Cap Screw	2
67	77396	10-32_1.25sh	#10-32 x 1 1/4" Socket Hd Cap Screw	2
68	62040	1.8_1.00rp	1/8" x 1" Roll Pin	1
69	63707	1.4_20 LN	1/4-20 Lock Nut	1
70	64215	1.4_.75dp	1/4" x 3/4" Dowel Pin	2
71	63632	1.4-20_.50bh	1/4-20 x 1/2" Button Hd Cap Screw	2
72	63708	5.16-18 LN	5/16-18 Lock Nut	2
73	63055	5.16-18_1.00bh	5/16-18 x 1" Button Hd Cap Screw	1
74	64216	5.16-24_1.00ssf	5/16-24 x 1" Socket Hd Set Screw	1

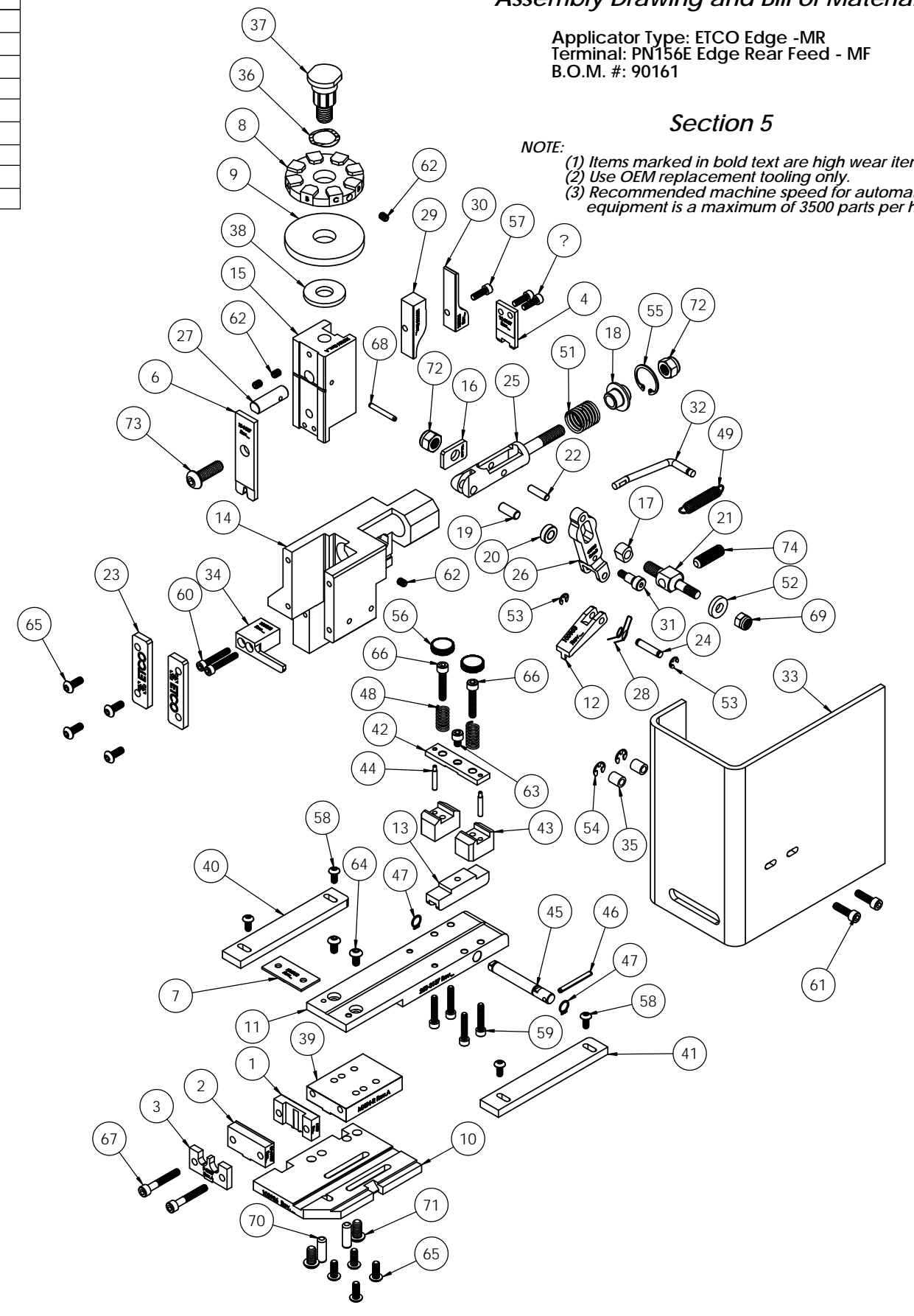
**NOTE: ITEMS MARKED IN BOLD TEXT ARE HIGH WEAR ITEMS**

**Assembly Drawing and Bill of Materials**

Applicator Type: ETCO Edge -MR  
Terminal: PN156E Edge Rear Feed - MF  
B.O.M. #: 90161

**Section 5**

**NOTE:**  
(1) Items marked in bold text are high wear items.  
(2) Use OEM replacement tooling only.  
(3) Recommended machine speed for automatic equipment is a maximum of 3500 parts per hour.



REV	DESCRIPTION	DATE	BY/DAE	APP	QTY	USED ON	SCALE	CAD REL	DATE	REV
1	PN156E						1:2		3/11/21	D

REV	PART NO.	DESCRIPTION	MATERIAL SPECIFICATION	OFF RECD.
		DO NOT SCALE DRAWING		
		UNLESS OTHERWISE SPECIFIED DIMENSIONS ARE IN INCHES TOLERANCES ARE FRACTIONS DECIMALS ANGLES		
		1/16 1/32 1/64 .015 .030 .060 .125 .250 .500 1.000		
		SURFACE FINISH: ALL OVER		
		THE INFORMATION CONTAINED HEREIN IS THE PROPERTY OF ETCO ENGINEERED PRODUCTS AND IS NOT TO BE REPRODUCED OR TRANSMITTED IN ANY FORM OR BY ANY MEANS, ELECTRONIC OR MECHANICAL, INCLUDING PHOTOCOPYING, RECORDING, OR BY ANY INFORMATION STORAGE AND RETRIEVAL SYSTEM, WITHOUT THE WRITTEN PERMISSION OF ETCO ENGINEERED PRODUCTS.		

PARTS LIST		ETCO ENGINEERED PRODUCTS 25 BELLOWS STREET WARWICK, RI 02888 (401)-467-2400	
See Parts List		<b>Edge Rear Feed (Metal Frame)</b>	
		DATE: 3/11/21	REV: -
		DRAWN BY: SCJ	DESIGNED BY: SCJ