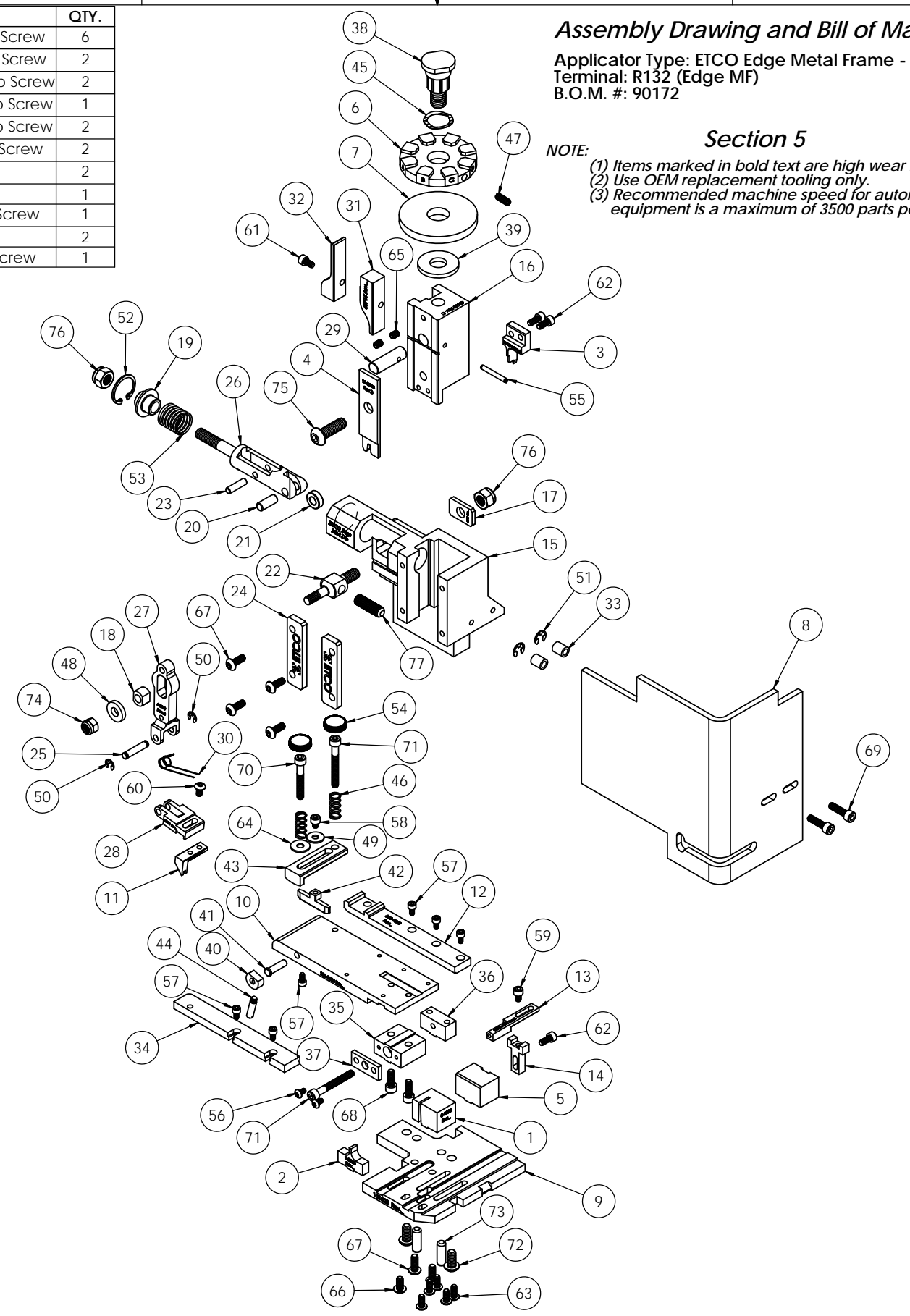


ITEM NO.	Part Code	PART NUMBER	DESCRIPTION	QTY.
1	<b>78675</b>	<b>8-3098</b>	<b>Cut-off Die</b>	<b>1</b>
2	<b>78677</b>	<b>9-3098</b>	<b>Anvil</b>	<b>1</b>
3	<b>78674</b>	<b>12-3098</b>	<b>Cut-off Punch</b>	<b>1</b>
4	<b>78678</b>	<b>13-3098</b>	<b>Wire Rolling Tool</b>	<b>1</b>
5	74802	26-3000	Backup Block	1
6	78669	34-3098	Wire Crimp Dial	1
7	100554	35-8000	No Insulation Dial	1
8	76403	199-3005	Safety Guard	1
9	101023	200-8080	Baseplate	1
10	78672	250-3098	Feed Plate	1
11	101024	303-8080	Feed Finger	1
12	78673	500-3098	Rear Guide Rail	1
13	76464	1600A-3001	Adjustable Stripper	1
14	74803	1600B-3000	Adjustable Stripper Holder	1
15	63660	ED2-M	Frame	1
16	63658	ED3	Plunger	1
17	63709	ED4	Retainer	1
18	63731	ED5	Feed Adjustment Guide Block	1
19	63714	ED6	Spring Retainer	1
20	63733	ED7	Cam Roll Pin	1
21	63706	ED8	Cam Roller	1
22	63704	ED9	Feed Adjustment Block	1
23	64245	ED10	Feed Arm Pin	1
24	63717	ED11	Gib	2
25	63701	ED12	Feed Finger Shaft	1
26	63705	ED13	Adjustable Feed Piston	1
27	63700	ED14	Feed Arm	1
28	63702	ED16	Feed Finger Retainer	1
29	63659	ED44	Locating Dowel	1
30	63732	ED45	Feed Finger Spring	1
31	63715	ED51	Post-feed Cam	1
32	63716	ED52	Pre-feed Cam	1
33	74491	GS-375	Guard Spacer	2
34	72643	MX28-2-S	Front Guide Rail	1
35	74384	MX29-S	Slide Support	1
36	74388	MX30-S	Support Anchor	1
37	74390	MX32-S	Support Cover	1
38	74407	MX33	Mounting Post	1
39	74411	MX36	Dial Spacer	1
40	74425	MX84-S	Brake Cam	1
41	74426	MX85-S	Cam Pivot Pin	1
42	74428	MX86-S	Brake Shoe	1
43	75178	MX87-S	Lift Arm	1
44	74430	MX88-S	Lever	1
45	72310	MX104	Wave Disc Spring	1
46	77322	LC-045E-10-M	Spring	2
47	70739	McMaster-Carr #3126A53	Spring Plunger	1
48	64213	McMaster Carr #98370A28	1/4" Hardened Flatwasher	1
49	72519	McMaster Carr #98029A043	#8 Hardened Washer	1
50	72069	McMaster Carr #98407A118	#8 E-Style Retaining Ring	2
51	64214	McMaster Carr #98407A122	#10 E-Style Retaining Ring	2
52	63734	McMaster Carr #98455A_122	Retaining Ring	1
53	63735	MS24585-1453	Piston Spring	1
54	73785	SPI 99-602-5	#10 Black Knurled Knob	2
55	62040	1.8_1.00rp	1/8" x 1" Roll Pin	1
56	63792	6-32_25bh	#6-32 x 1/4" Button Hd Cap Screw	2
57	63207	6-32_25sh	#6-32 x 1/4" Socket Hd Cap Screw	6
58	60265	8-32_19sh	#8-32 x 3/16" Socket Hd Cap Screw	1
59	63163	8-32_25sh	#8-32 x 1/4" Socket Hd Cap Screw	1
60	77097	8-32_31bh	#8-32 x 5/16" Button Hd Cap Screw	1
61	100091	8-32_31sh	#8-32 x 5/16" Socket Hd Cap Screw	1
62	63161	8-32_38sh	#8-32 x 3/8" Socket Hd Cap Screw	3
63	61472	8-32_38bh	#8-32 x 3/8" Button Hd Cap Screw	5
64	63753	10fw	#10 Flatwasher	1
65	63054	10-32_25ss	#10-32 x 1/4" Socket Hd Set Screw	2
66	78993	10-32_38bh	#10-32 x 3/8" Button Hd Cap Screw	1

**NOTE: ITEMS MARKED IN BOLD TEXT ARE HIGH WEAR ITEMS**

ITEM NO.	Part Code	PART NUMBER	DESCRIPTION	QTY.
67	76501	10-32_50bh	#10-32 x 1/2" Button Hd Cap Screw	6
68	63056	10-32_50sh	#10-32 x 1/2" Socket Hd Cap Screw	2
69	64215	10-32_69sh	#10-32 x 11/16" Socket Hd Cap Screw	2
70	77396	10-32_1.25sh	#10-32 x 1 1/4" Socket Hd Cap Screw	1
71	63826	10-32_1.50sh	#10-32 x 1 1/2" Socket Hd Cap Screw	2
72	63632	1.4-20_50bh	1/4-20 x 1/2" Button Hd Cap Screw	2
73	64215	1.4_75dp	1/4" x 3/4" Dowel Pin	2
74	63707	1.4_20 LN	1/4-20 Lock Nut	1
75	63055	5.16-18_1.00bh	5/16-18 x 1" Button Hd Cap Screw	1
76	63708	5.16-18 LN	5/16-18 Lock Nut	2
77	64216	5.16-24_1.00sf	5/16-24 x 1" Socket Hd Set Screw	1



### Assembly Drawing and Bill of Materials

Applicator Type: ETCO Edge Metal Frame - Side Feed  
Terminal: R132 (Edge MF)  
B.O.M. #: 90172

**Section 5**

**NOTE:**

- (1) Items marked in bold text are high wear items.
- (2) Use OEM replacement tooling only.
- (3) Recommended machine speed for automatic equipment is a maximum of 3500 parts per hour.

REV	DESCRIPTION	DATE	BY/DATE	APP	SCALE	APP	DATE	BY/DATE	APP

DO NOT SCALE DRAWING	UNLESS OTHERWISE SPECIFIED DIMENSIONS ARE IN INCHES TOLERANCES ARE FRACTIONS DECIMALS ANGLES	1/16" .005" .015" .030" .015" .015"
SURFACE FINISH	ALL OVER	