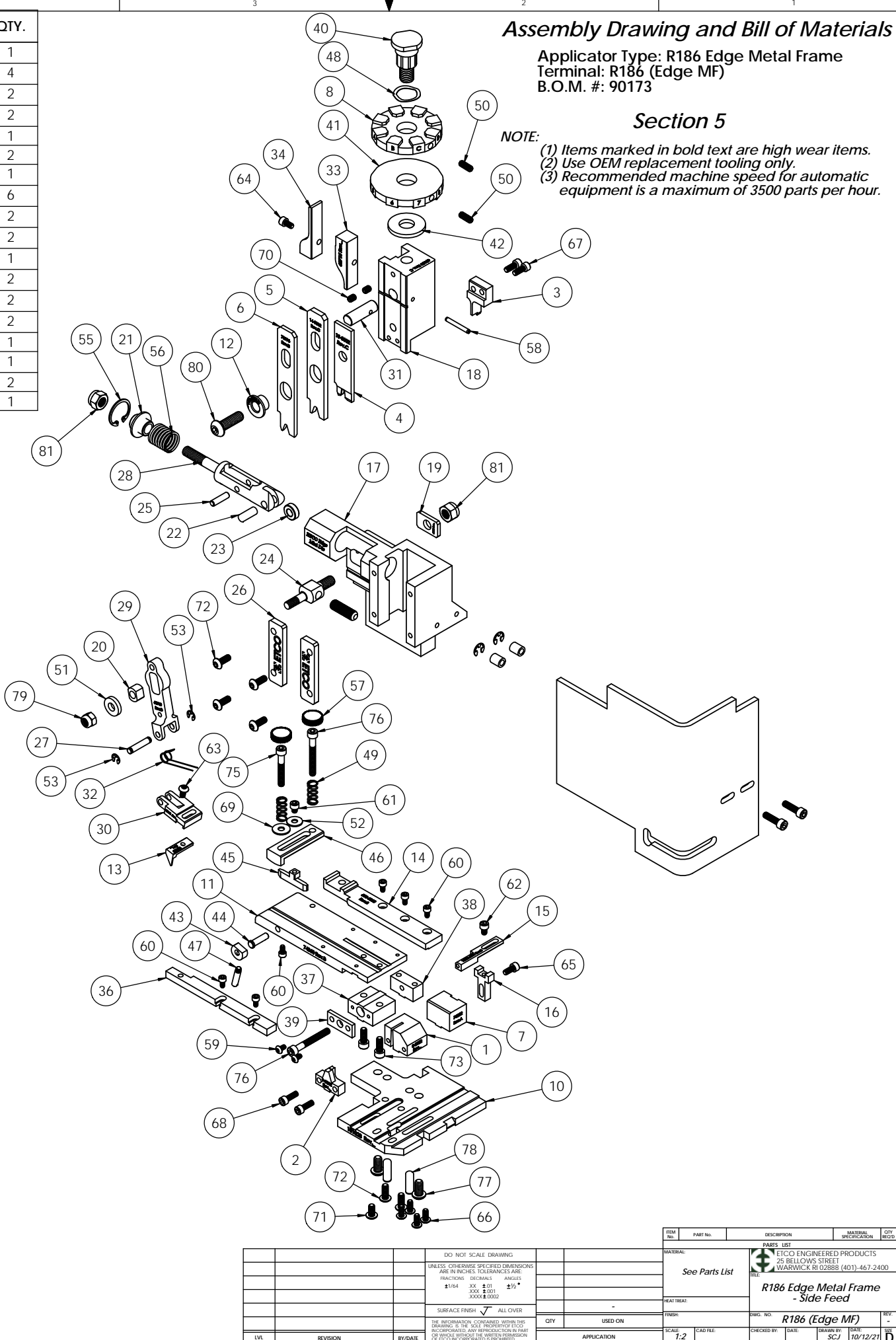


ITEM NO.	Part_Code	PART NUMBER	DESCRIPTION	QTY.	ITEM NO.	Part_Code	PART NUMBER	DESCRIPTION	QTY.
1	73997	8-3002	Cut-off Die	1	65	63161	8-32_.38sh	#8-32 x 3/8" Socket Hd Cap Screw	1
2	73992	9-3002	Anvil	1	66	61472	8-32_.38bh	#8-32 x 3/8" Button Hd Cap Screw	4
3	73993	12-3002	Cut-off Punch	1	67		8-32_.44sh	#8-32 x 7/16" Socket Hd Cap Screw	2
4	73994	13-3002	Wire Rolling Tool	1	68	63164	8-32_.50sh	#8-32 x 1/2" Socket Hd Cap Screw	2
5	73995	14-3002	Insulation Rolling Tool	1	69	63753	10fw	#10 Flatwasher	1
6	73996	14A-3002	Insulation Container Tool	1	70	63054	10-32_.25ss	#10-32 x 1/4" Socket Hd Set Screw	2
7	74802	26-3000	Backup Block	1	71	78993	10-32_.38bh	#10-32 x 3/8" Button Hd Cap Screw	1
8	72280	34-3062	Wire Crimp Dial	1	72	76501	10-32_.50bh	#10-32 x 1/2" Button Hd Cap Screw	6
9	76403	199-3005	Safety Guard	1	73	63056	10-32_.50sh	#10-32 x 1/2" Socket Hd Cap Screw	2
10	101028	200-8081	Baseplate	1	74	64215	10-32_.69sh	#10-32 x 11/16" Socket Hd Cap Screw	2
11	74060	250-3002	Feed Plate	1	75	77396	10-32_1.25sh	#10-32 x 1 1/4" Socket Hd Cap Screw	1
12	101029	297S-3002	Insulation Tool Spacer	1	76	63826	10-32_1.50sh	#10-32 x 1 1/2" Socket Hd Cap Screw	2
13	100135	303-8002	Feed Finger	1	77	63632	1.4-20_.50bh	1/4-20 x 1/2" Button Hd Cap Screw	2
14	74059	500-3002	Rear Guide Rail	1	78	64215	1.4_.75dp	1/4" x 3/4" Dowel Pin	2
15	76464	1600A-3001	Adjustable Stripper	1	79	63707	1.4_20 LN	1/4-20 Lock Nut	1
16	74803	1600B-3000	Adjustable Stripper Holder	1	80	63055	5.16-18_1.00bh	5/16-18 x 1" Button Hd Cap Screw	1
17	63660	ED2-M	Frame	1	81	63708	5.16-18 LN	5/16-18 Lock Nut	2
18	63658	ED3	Plunger	1	82	64216	5.16-24_1.00ssf	5/16-24 x 1" Socket Hd Set Screw	1
19	63709	ED4	Retainer	1					
20	63731	ED5	Feed Adjustment Guide Block	1					
21	63714	ED6	Spring Retainer	1					
22	63733	ED7	Cam Roll Pin	1					
23	63706	ED8	Cam Roller	1					
24	63704	ED9	Feed Adjustment Block	1					
25	64245	ED10	Feed Arm Pin	1					
26	63717	ED11	Gib	2					
27	63701	ED12	Feed Finger Shaft	1					
28	63705	ED13	Adjustable Feed Piston	1					
29	63700	ED14	Feed Arm	1					
30	63702	ED16	Feed Finger Retainer	1					
31	63659	ED44	Locating Dowel	1					
32	63732	ED45	Feed Finger Spring	1					
33	63715	ED51	Post-feed Cam	1					
34	63716	ED52	Pre-Feed Cam	1					
35	74491	GS-375	Guard Spacer	2					
36	74840	MX28-1-S	Front Guide Rail	1					
37	74384	MX29-S	Slide Support	1					
38	74388	MX30-S	Support Anchor	1					
39	74390	MX32-S	Support Cover	1					
40	74407	MX33	Mounting Post	1					
41	74409	MX35	Insulation Dial	1					
42	74411	MX36	Dial Spacer	1					
43	74425	MX84-S	Brake Cam	1					
44	74426	MX85-S	Cam Pivot Pin	1					
45	74428	MX86-S	Brake Shoe	1					
46	75178	MX87-S	Lift Arm	1					
47	74430	MX88-S	Lever	1					
48	72310	MX104	Wave Disc Spring	1					
49	77322	LC-045E-10-M	Spring	2					
50	70739	McMaster-Carr #3126A53	Spring Plunger	2					
51	64213	McMaster Carr #98370A28	1/4" Hardened Flatwasher	1					
52	72519	McMaster Carr #98029A043	#8 Hardened Washer	1					
53	72069	McMaster Carr #98407A118	#8 E-Style Retaining Ring	2					
54	64214	McMaster Carr #98407A122	#10 E-Style Retaining Ring	2					
55	63734	McMaster Carr #98455A_122	Retaining Ring	1					
56	63735	MS24585-1453	Piston Spring	1					
57	73785	SPI 99-602-5	#10 Black Knurled Knob	2					
58	62040	1.8_1.00rp	1/8" x 1" Roll Pin	1					
59	63792	6-32_.25bh	#6-32 x 1/4" Button Hd Cap Screw	2					
60	63207	6-32_.25sh	#6-32 x 1/4" Socket Hd Cap Screw	6					
61	60265	8-32_.19sh	#8-32 x 3/16" Socket Hd Cap Screw	1					
62	63163	8-32_.25sh	#8-32 x 1/4" Socket Hd Cap Screw	1					
63	77097	8-32_.31bh	#8-32 x 5/16" Button Hd Cap Screw	1					
64	100091	8-32_.31sh	#8-32 x 5/16" Socket Hd Cap Screw	1					

**NOTE: ITEMS MARKED IN BOLD TEXT ARE HIGH WEAR ITEMS**



REV	DESCRIPTION	DATE	BY/DATE	APP	QTY	USED ON	SCALE	CAD REL	CHECKED BY	DATE	DESIGNED BY	DATE	REV
1							1:2		SCJ	10/12/21	SCJ		1

DO NOT SCALE DRAWING  
UNLESS OTHERWISE SPECIFIED DIMENSIONS ARE IN INCHES. TOLERANCES ARE:  
FRACTIONS DECIMALS ANGLES  
±.004 ±.015 ±.01°  
±.0001 ±.001 ±.005

SURFACE FINISH: ALL OVER

THE INFORMATION CONTAINED HEREIN IS THE PROPERTY OF ETICO ENGINEERED PRODUCTS. IT IS TO BE USED ONLY FOR THE PURPOSES SPECIFIED HEREIN. NO OTHER USE IS PERMITTED WITHOUT THE WRITTEN PERMISSION OF ETICO ENGINEERED PRODUCTS.

ETICO ENGINEERED PRODUCTS  
25 BELLOWS STREET  
WARWICK, RI 02888 (401) 467-2400

See Parts List

R186 Edge Metal Frame - Side Feed

DATE: 10/12/21

REV: 1

SCALE: 1:2

CAD REL:

CHECKED BY: SCJ

DESIGNED BY: SCJ

DATE: 10/12/21

REV: 1