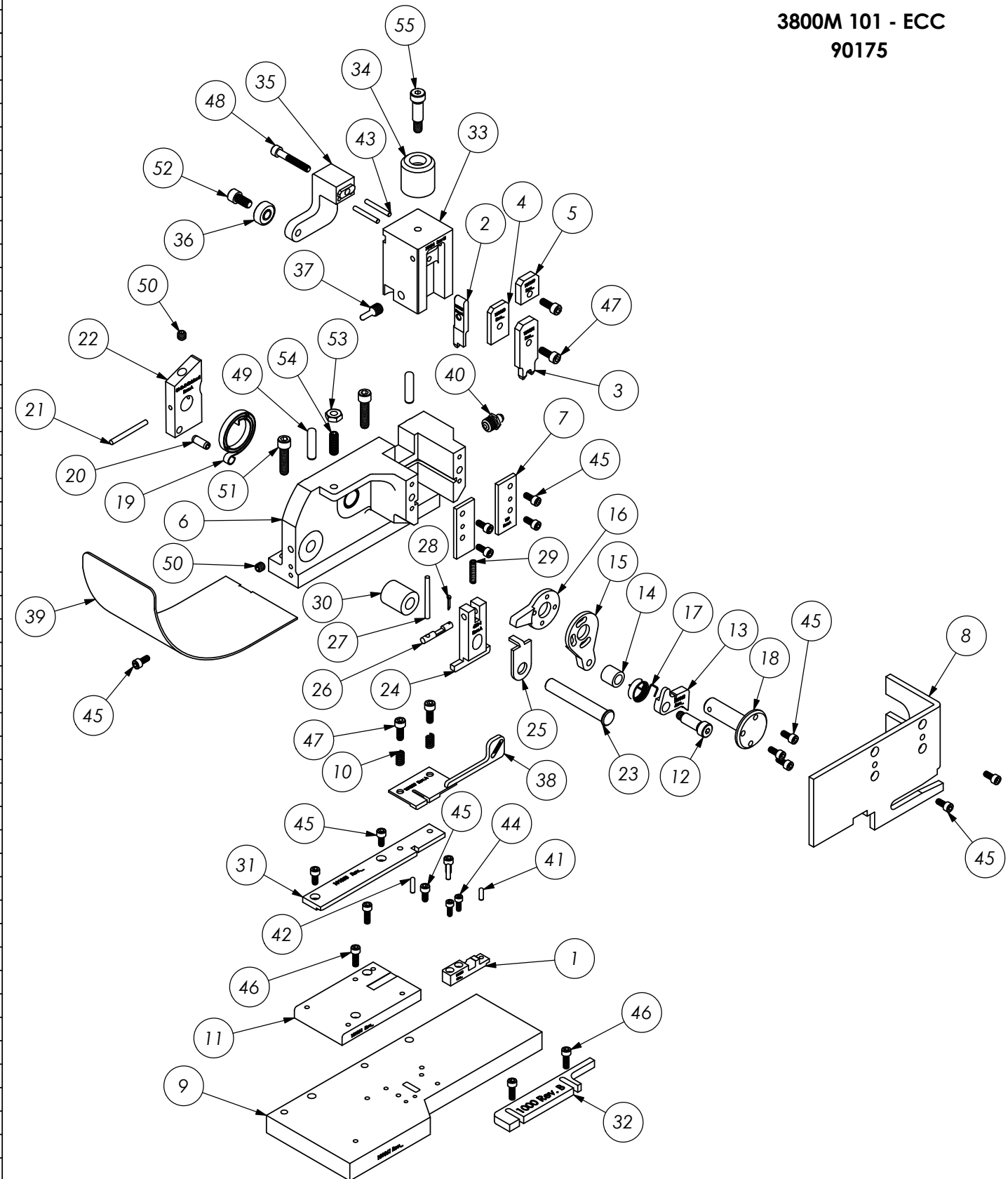


PARTS LIST				
Item	Part Code	QTY.	Part No./File Name	Description
1	101055	1	9-900	Anvil
2	101057	1	12-900	Cut-off Punch
3	101054	1	13-900	Wire Rolling Tool
4	101060	1	17-152	Roll Tool Spacer
5	101109	1	17-900	Roll Tool Back-up Bolck
6	63899	1	101	Casting
7	69859	2	169	Gib
8	73922	1	176	Guard
9	101061	1	201-900	Base Plate
10	73952	2	231	Stripper Spring
11	101064	1	250-900	Die Plate
12	76873	1	301-4	Shoulder Screw
13	101063	1	303-900	Feed Finger
14	77342	1	304-.475	Feed Finger Spacer
15	74393	1	305-Finished	Feed Finger Arm
16	74396	1	306	Feed Stop Arm
17	76721	1	307-7	Feed Finger Spring
18	74400	1	308-Finished	Feed Shaft
19	74402	1	310	Cam Return Spring
20	74403	1	311	Roll Pin
21	74404	1	312	Cam Taper Pin
22	74410	1	314L-2-Finished	Cam
23	74495	1	401-Finished	Brake Shaft
24	74498	1	403-1	Brake Body
25	74496	1	402	Spring Retainer
26	74673	1	404	Brake Cam
27	74674	1	405	Taper Pin
28	74675	1	406	Cotter Pin
29	74676	1	407	Brake Spring
30	60366	1	408-.850	Brake Spacer
31	101058	1	500-900	Rear Guide
32	75392	1	1000	Adjustable Front Guide
33	75496	1	1101-FS	Plunger
34	77918	1	1102-FS	Floating Shank
35	75710	1	1125-Finished	Cam Roller Bracket
36	75719	1	1142	Cam Roller Bearing
37	75729	1	1156	Plunger Screw
38	101059	1	1600-900	Stripper/Wire Stop
39	76186	1	1800	Stock Chute
40	63506	1	McMaster-Carr #1095K11	1/8 NPT Grease Fitting
41	70555	1	1.8_.38dp	1/8" x 3/8" Dowel Pin
42	63507	2	1.8_.50dp	Ø 1/8" x 1/2" Dowel
43	62849	2	1.8_1.00dp	1/8" x 1" Dowel
44	63209	2	6-32_.38sh	#6-32 x 3/8" Socket Hd Cap Screw
45	63161	14	8-32_.38sh	#8-32 x 3/8" Socket Hd Cap Screw
46	63164	4	8-32_.50sh	#8-32 x 1/2" Socket Hd Cap Screw
47	63056	4	10-32_.50sh	#10-32 x 1/2" Socket Hd Cap Screw
48	77396	1	10-32_1.25sh	#10-32 x 1 1/4" Socket Hd Cap Screw
49	63510	2	1.4_1.00dp	1/4 x 1" Dowel Pin
50	63511	2	1.4-20_.25ssf	1/4-20 x 1/4" Socket Hd Set Screw
51	63168	2	1.4-20_1.00sh	1/4-20 x 1" Socket Hd Cap Screw
52	62184	1	1.4-28_.50sh	1/4-28 x 1/2" Socket Hd Cap Screw
53	63512	1	1.4-28_jn	1/4-28 Jam Nut
54	63513	1	1.4-28_.75ss	1/4-28 x 3/4" Socket Set Screw
55	78918	1	5.16_.75shss	5/16 x 3/4" Shoulder Screw



**3800M 101 - ECC
90175**

DO NOT SCALE DRAWING			
UNLESS OTHERWISE SPECIFIED DIMENSIONS ARE IN INCHES. TOLERANCES ARE:			
FRACTIONS DECIMALS ANGLES			
±1/64 .001 ±.01 ±1/2°			
.0005 .001 .0002			
SURFACE FINISH: √ ALL OVER			
A		ECR# 6838	SCJ
LVL		REVISION	BY/DATE
A		5/24/22	

QTY	USED ON
	APPLICATION
	3800M 101 - ECC

ITEM No.	PART No.	DESCRIPTION	MATERIAL SPECIFICATION	QTY REQ'D
PARTS LIST				
MATERIAL: See Parts List				
ECC ENGINEERED PRODUCTS 25 BELLOWS STREET WARWICK RI 02888 (401)-467-2400				
ECC Side Feed Applicator				
HEAT TREAT:				
FINISH:				
DWG. NO. 3800M 101 - ECC				
SCALE: 2:5	CAD FILE:	CHECKED BY: SCJ	DATE: 11/04/21	REV. A