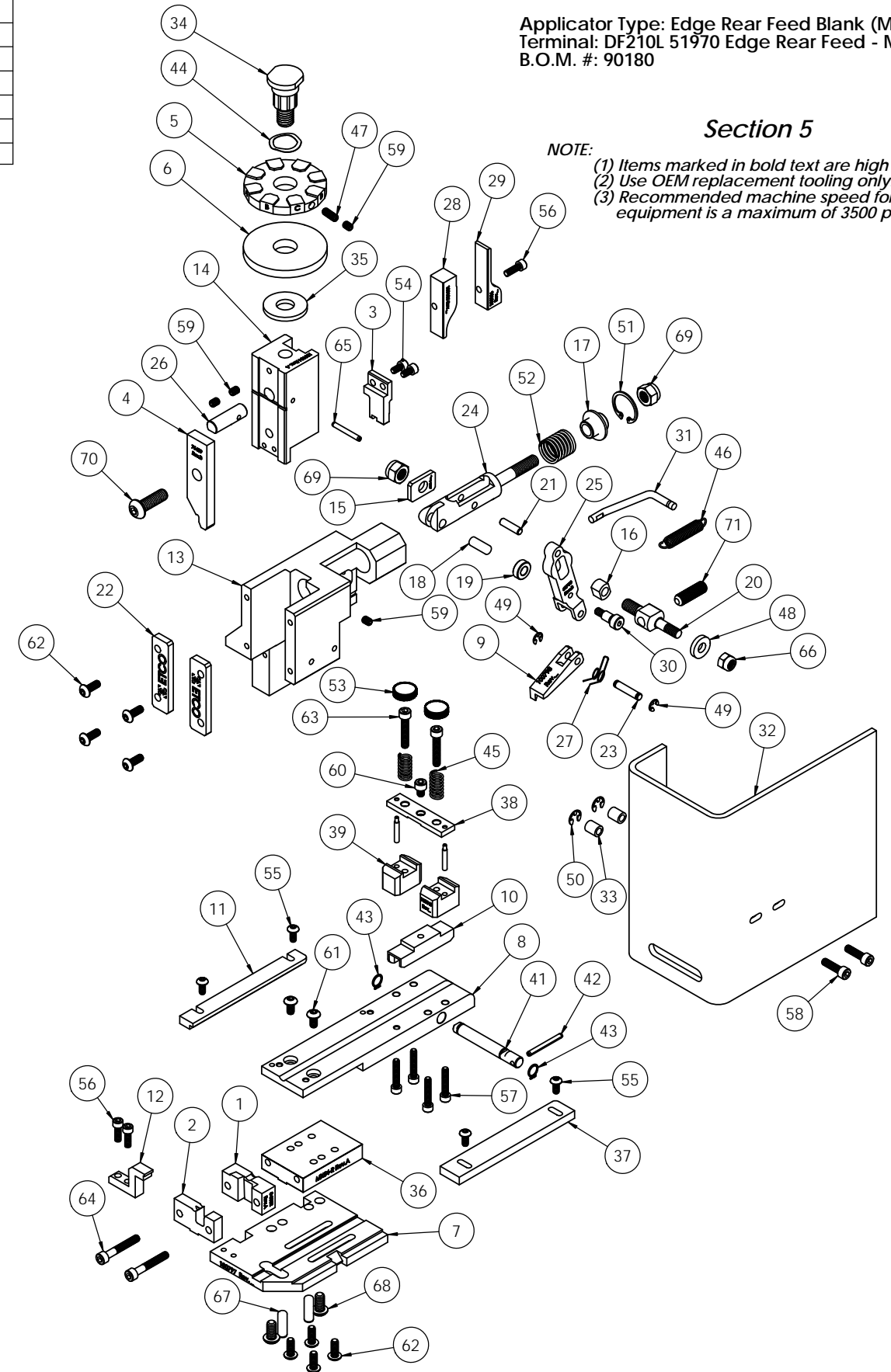


Assembly Drawing and Bill of Materials

Applicator Type: Edge Rear Feed Blank (Metal Frame)
Terminal: DF210L 51970 Edge Rear Feed - MF
B.O.M. #: 90180

Section 5

- NOTE:**
(1) Items marked in bold text are high wear items.
(2) Use OEM replacement tooling only.
(3) Recommended machine speed for automatic equipment is a maximum of 3500 parts per hour.



NOTE: ITEMS MARKED IN BOLD TEXT ARE HIGH WEAR ITEMS

ITEM NO.	Part_Code	PART NUMBER	DESCRIPTION	QTY.	ITEM NO.	Part_Code	PART NUMBER	DESCRIPTION	QTY.
1	77235	8-3052(DF210/51970)	Cut-off Die	1	65	62040	1.8_1.00rp	1/8" x 1" Roll Pin	1
2	78597	9-3035-1 (DF210/51970)	Wire Anvil	1	66	63707	1.4_20 LN	1/4-20 Lock Nut	1
3	77234	12-3052 (DF210/51970)	Cut-Off Punch	1	67	64215	1.4_.75dp	1/4" x 3/4" Dowel Pin	2
4	76439	13-3035	Wire Rolling Tool	1	68	63632	1.4-20_.50bh	1/4-20 x 1/2" Button Hd Cap Screw	2
5	72367	34-3064	Wire Crimp Dial	1	69	63708	5.16-18 LN	5/16-18 Lock Nut	2
6	100554	35-8000	No Insulation Dial	1	70	63055	5.16-18_1.00bh	5/16-18 x 1" Button Hd Cap Screw	1
7	100797	200-8056	Baseplate	1	71	64216	5.16-24_1.00ssf	5/16-24 x 1" Socket Hd Set Screw	1
8	76487	250-3035	Feed Plate	1					
9	100798	303-8056	Feed Finger	1					
10	76490	403-3035	Brake Shoe	1					
11	76489	1000-3035	Left Guide Rail	1					
12	76486	1600-3035	Stripper	1					
13	100099	ED2-R	Frame	1					
14	100104	ED3-R	Plunger	1					
15	63709	ED4	Retainer	1					
16	63731	ED5	Feed Adjustment Guide Block	1					
17	63714	ED6	Spring Retainer	1					
18	63733	ED7	Cam Roll Pin	1					
19	63706	ED8	Cam Roller	1					
20	63704	ED9	Feed Adjustment Block	1					
21	64245	ED10	Feed Arm Pin	1					
22	63717	ED11	Gib	2					
23	63701	ED12	Feed Finger Shaft	1					
24	63705	ED13	Adjustable Feed Piston	1					
25	63700	ED14	Feed Arm	1					
26	63659	ED44	Locating Dowel	1					
27	63732	ED45	Feed Finger Spring	1					
28	100105	ED51-R	Post Feed Cam	1					
29	100106	ED52-R	Pre-Feed Cam	1					
30	100287	ED53-R	Pivot Pin	1					
31	100288	ED100-R	Spring Bracket	1					
32	100097	ED199-R	Safety Guard	1					
33	74491	GS-375	Guard Spacer	2					
34	74407	MX33	Mounting Post	1					
35	74411	MX36	Dial Spacer	1					
36	74908	MX54-R	Slide Support	1					
37	74818	MX57-R	Right Guide Rail	1					
38	74820	MX91-R	Lifter Plate	1					
39	100549	MX92-R-8038	Brake Support	2					
40	74822	MX93-R	Lifter	2					
41	74823	MX94-R	Brake Shaft	1					
42	74825	MX96-R	Brake Handle	1					
43	74827	MX97-R	Retaining Ring	2					
44	72310	MX104	Wave Disc Spring	1					
45	75342	LC-045E-6-M	Brake Spring	2					
46	74611	LE-037CD-6	Extension Spring	1					
47	70739	McMaster-Carr #3126A53	Spring Plunger	1					
48	64213	McMaster Carr #98370A28	1/4" Hardened Flatwasher	1					
49	72069	McMaster Carr #98407A118	#8 E-Style Retaining Ring	2					
50	64214	McMaster Carr #98407A122	#10 E-Style Retaining Ring	2					
51	63734	McMaster Carr #98455A_122	Retaining Ring	1					
52	63735	MS24585-1453	Piston Spring	1					
53	73785	SPI 99-602-5	#10 Black Knurled Knob	2					
54	100091	8-32_.31sh	#8-32 x 5/16" Socket Hd Cap Screw	2					
55	61472	8-32_.38bh	#8-32 x 3/8" Button Hd Cap Screw	4					
56	63164	8-32_.50sh	#8-32 x 1/2" Socket Hd Cap Screw	3					
57	63949	8-32_.88sh	#8-32 x 7/8" Socket Hd Cap Screw	4					
58	64215	10-32_.69sh	#10-32 x 11/16" Socket Hd Cap Screw	2					
59	63054	10-32_.25ss	#10-32 x 1/4" Socket Hd Set Screw	4					
60	63473	10-32_.25sh	#10-32 x 1/4" Socket Hd Cap Screw	1					
61	78993	10-32_.38bh	#10-32 x 3/8" Button Hd Cap Screw	2					
62	76501	10-32_.50bh	#10-32 x 1/2" Button Hd Cap Screw	8					
63	63155	10-32_1.00sh	#10-32 x 1" Socket Hd Cap Screw	2					
64	77396	10-32_1.25sh	#10-32 x 1 1/4" Socket Hd Cap Screw	2					

DO NOT SCALE DRAWING		UNLESS OTHERWISE SPECIFIED DIMENSIONS ARE IN INCHES TOLERANCES ARE:	
FRACTIONS	DECIMALS	ANGLES	
±1/64	±.015	±1/2°	
±.0005	±.001	±.0001	
SURFACE FINISH: ALL OVER		FINISH: SEE PARTS LIST	
QTY	USED ON	SCALE	DATE
	APPLICATION	1:2	2/27/20

REV	DESCRIPTION	DATE	BY/DATE	APP
1	ISSUED FOR PRODUCTION	2/27/20	SCJ	

See Parts List
DF210L 51970 Edge Rear Feed - MF
 METCO ENGINEERED PRODUCTS
 25 BELLOWS STREET
 WARWICK, RI 02888 (401)-467-2400
 DRAWN BY: SCJ
 CHECKED BY: SCJ
 DATE: 2/27/20