

ITEM NO.	Part_Code	PART NUMBER	DESCRIPTION	QTY.	ITEM NO.	Part_Code	PART NUMBER	DESCRIPTION	QTY.
1	76643	8-3041	Rear Cut-off Die	1	66	64215	10-32_.69sh	#10-32 x 11/16" Socket Hd Cap Screw	2
2	76642	8A-3041	Front Cut-off Die	1	67	63054	10-32_.25ss	#10-32 x 1/4" Socket Hd Set Screw	5
3	76644	9-3041	Wire Anvil	1	68	63473	10-32_.25sh	#10-32 x 1/4" Socket Hd Cap Screw	1
4	76645	9A-3041	Insulation Anvil	1	69	78993	10-32_.38bh	#10-32 x 3/8" Button Hd Cap Screw	2
5	76602	12-3039	Cut-off Punch	1	70	76501	10-32_.50bh	#10-32 x 1/2" Button Hd Cap Screw	8
6	76641	12A-3041	Cut-off Punch Spacer	1	71	63155	10-32_1.00sh	#10-32 x 1" Socket Hd Cap Screw	2
7	76646	13-3041	Wire Roll Tool	1	72	77396	10-32_1.25sh	#10-32 x 1 1/4" Socket Hd Cap Screw	2
8	76647	14-3041	Insulation Rolling Tool	1	73	62040	1.8_1.00rp	1/8" x 1" Roll Pin	1
9	76765	26-3041	Hold Down	1	74	63707	1.4_20 LN	1/4-20 Lock Nut	1
10	78295	34-3087	Wire Crimp Dial	1	75	64215	1.4_.75dp	1/4" x 3/4" Dowel Pin	2
11	101022	143S-3002	Insulation Tool Spacer	1	76	63632	1.4-20_.50bh	1/4-20 x 1/2" Button Hd Cap Screw	2
12	101121	200-8085	Baseplate	1	77	63708	5.16-18 LN	5/16-18 Lock Nut	2
13	101083	303-8085	Feed Finger	1	78	63055	5.16-18_1.00bh	5/16-18 x 1" Button Hd Cap Screw	1
14	75508	403-3013	Brake Shoe	1	79	64216	5.16-24_1.00ssf	5/16-24 x 1" Socket Hd Set Screw	1
15	100099	ED2-R	Frame	1					
16	100104	ED3-R	Plunger	1					
17	63709	ED4	Retainer	1					
18	63731	ED5	Feed Adjustment Guide Block	1					
19	63714	ED6	Spring Retainer	1					
20	63733	ED7	Cam Roll Pin	1					
21	63706	ED8	Cam Roller	1					
22	63704	ED9	Feed Adjustment Block	1					
23	64245	ED10	Feed Arm Pin	1					
24	63717	ED11	Gib	2					
25	63701	ED12	Feed Finger Shaft	1					
26	63705	ED13	Adjustable Feed Piston	1					
27	63700	ED14	Feed Arm	1					
28	63659	ED44	Locating Dowel	1					
29	63732	ED45	Feed Finger Spring	1					
30	100105	ED51-R	Post Feed Cam	1					
31	100106	ED52-R	Pre-Feed Cam	1					
32	100287	ED53-R	Pivot Pin	1					
33	100288	ED100-R	Spring Bracket	1					
34	100097	ED199-R	Safety Guard	1					
35	100098	ED1600-R	Standard Stripper	1					
36	74491	GS-375	Guard Spacer	2					
37	72310	MX104	Wave Disc Spring	1					
38	74407	MX33	Mounting Post	1					
39	74409	MX35	Insulation Dial	1					
40	74411	MX36	Dial Spacer	1					
41	74908	MX54-R	Slide Support	1					
42	74816	MX55-R	Feed Plate	1					
43	74817	MX56-R	Left Guide Rail	1					
44	74818	MX57-R	Right Guide Rail	1					
45	74820	MX91-R	Lifter Plate	1					
46	74821	MX92-R	Brake Support	2					
47	74822	MX93-R	Lifter	2					
48	74823	MX94-R	Brake Shaft	1					
49	74825	MX96-R	Brake Handle	1					
50	74827	MX97-R	Retaining Ring	2					
51	75342	LC-045E-6-M	Brake Spring	2					
52	74611	LE-037CD-6	Extension Spring	1					
53	70739	McMaster-Carr #3126A53	Spring Plunger	2					
54	63735	MS24585-1453	Piston Spring	1					
55	64213	McMaster Carr #98370A28	1/4" Hardened Flatwasher	1					
56	72069	McMaster Carr #98407A118	#8 E-Style Retaining Ring	2					
57	64214	McMaster Carr #98407A122	#10 E-Style Retaining Ring	2					
58	63734	McMaster Carr #98455A_122	Retaining Ring	1					
59	73785	SPI 99-602-5	#10 Black Knurled Knob	2					
60	63161	8-32_.38sh	#8-32 x 3/8" Socket Hd Cap Screw	2					
61	61472	8-32_.38bh	#8-32 x 3/8" Button Hd Cap Screw	2					
62	63164	8-32_.50bh	#8-32 x 1/2" Button Hd Cap Screw	2					
63	63164	8-32_.50sh	#8-32 x 1/2" Socket Hd Cap Screw	1					
64	63949	8-32_.88sh	#8-32 x 7/8" Socket Hd Cap Screw	4					
65	63213	8-32_1.00sh	#8-32 x 1" Socket Hd Cap Screw	2					

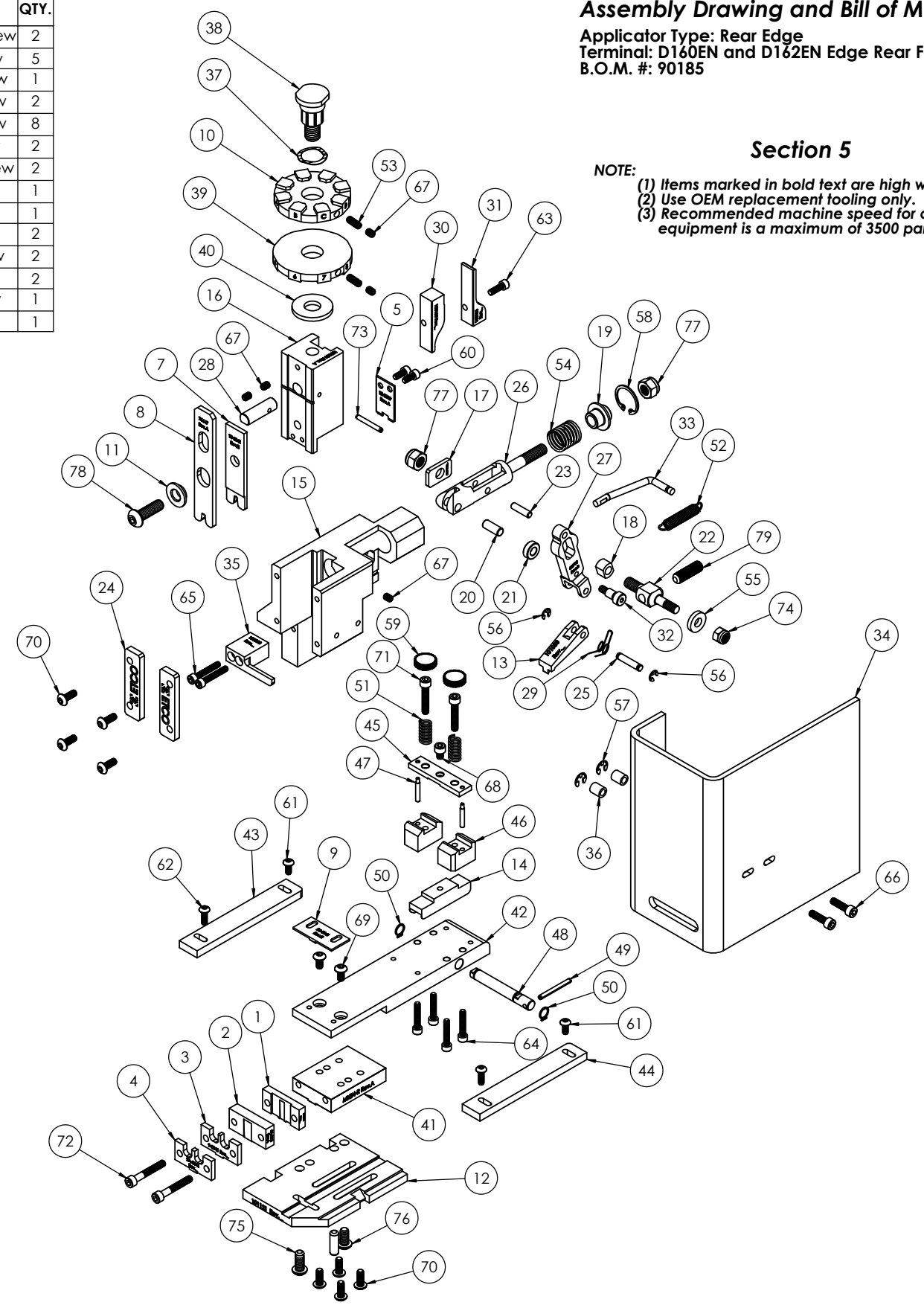
**NOTE: ITEMS MARKED IN BOLD TEXT ARE HIGH WEAR ITEMS**

### Assembly Drawing and Bill of Materials

Applicator Type: Rear Edge  
Terminal: D160EN and D162EN Edge Rear Feed - MF  
B.O.M. #: 90185

### Section 5

- NOTE:**
- (1) Items marked in bold text are high wear items.
  - (2) Use OEM replacement tooling only.
  - (3) Recommended machine speed for automatic equipment is a maximum of 3500 parts per hour.



ITEM NO.	PART NO.	DESCRIPTION	MATERIAL SPECIFICATION	QTY.
1	76643	8-3041	Rear Cut-off Die	1
2	76642	8A-3041	Front Cut-off Die	1
3	76644	9-3041	Wire Anvil	1
4	76645	9A-3041	Insulation Anvil	1
5	76602	12-3039	Cut-off Punch	1
6	76641	12A-3041	Cut-off Punch Spacer	1
7	76646	13-3041	Wire Roll Tool	1
8	76647	14-3041	Insulation Rolling Tool	1
9	76765	26-3041	Hold Down	1
10	78295	34-3087	Wire Crimp Dial	1
11	101022	143S-3002	Insulation Tool Spacer	1
12	101121	200-8085	Baseplate	1
13	101083	303-8085	Feed Finger	1
14	75508	403-3013	Brake Shoe	1
15	100099	ED2-R	Frame	1
16	100104	ED3-R	Plunger	1
17	63709	ED4	Retainer	1
18	63731	ED5	Feed Adjustment Guide Block	1
19	63714	ED6	Spring Retainer	1
20	63733	ED7	Cam Roll Pin	1
21	63706	ED8	Cam Roller	1
22	63704	ED9	Feed Adjustment Block	1
23	64245	ED10	Feed Arm Pin	1
24	63717	ED11	Gib	2
25	63701	ED12	Feed Finger Shaft	1
26	63705	ED13	Adjustable Feed Piston	1
27	63700	ED14	Feed Arm	1
28	63659	ED44	Locating Dowel	1
29	63732	ED45	Feed Finger Spring	1
30	100105	ED51-R	Post Feed Cam	1
31	100106	ED52-R	Pre-Feed Cam	1
32	100287	ED53-R	Pivot Pin	1
33	100288	ED100-R	Spring Bracket	1
34	100097	ED199-R	Safety Guard	1
35	100098	ED1600-R	Standard Stripper	1
36	74491	GS-375	Guard Spacer	2
37	72310	MX104	Wave Disc Spring	1
38	74407	MX33	Mounting Post	1
39	74409	MX35	Insulation Dial	1
40	74411	MX36	Dial Spacer	1
41	74908	MX54-R	Slide Support	1
42	74816	MX55-R	Feed Plate	1
43	74817	MX56-R	Left Guide Rail	1
44	74818	MX57-R	Right Guide Rail	1
45	74820	MX91-R	Lifter Plate	1
46	74821	MX92-R	Brake Support	2
47	74822	MX93-R	Lifter	2
48	74823	MX94-R	Brake Shaft	1
49	74825	MX96-R	Brake Handle	1
50	74827	MX97-R	Retaining Ring	2
51	75342	LC-045E-6-M	Brake Spring	2
52	74611	LE-037CD-6	Extension Spring	1
53	70739	McMaster-Carr #3126A53	Spring Plunger	2
54	63735	MS24585-1453	Piston Spring	1
55	64213	McMaster Carr #98370A28	1/4" Hardened Flatwasher	1
56	72069	McMaster Carr #98407A118	#8 E-Style Retaining Ring	2
57	64214	McMaster Carr #98407A122	#10 E-Style Retaining Ring	2
58	63734	McMaster Carr #98455A_122	Retaining Ring	1
59	73785	SPI 99-602-5	#10 Black Knurled Knob	2
60	63161	8-32_.38sh	#8-32 x 3/8" Socket Hd Cap Screw	2
61	61472	8-32_.38bh	#8-32 x 3/8" Button Hd Cap Screw	2
62	63164	8-32_.50bh	#8-32 x 1/2" Button Hd Cap Screw	2
63	63164	8-32_.50sh	#8-32 x 1/2" Socket Hd Cap Screw	1
64	63949	8-32_.88sh	#8-32 x 7/8" Socket Hd Cap Screw	4
65	63213	8-32_1.00sh	#8-32 x 1" Socket Hd Cap Screw	2