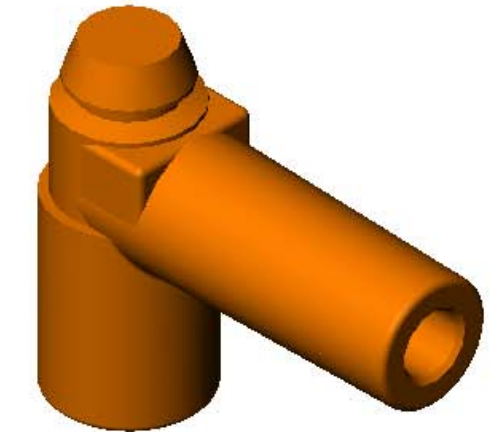
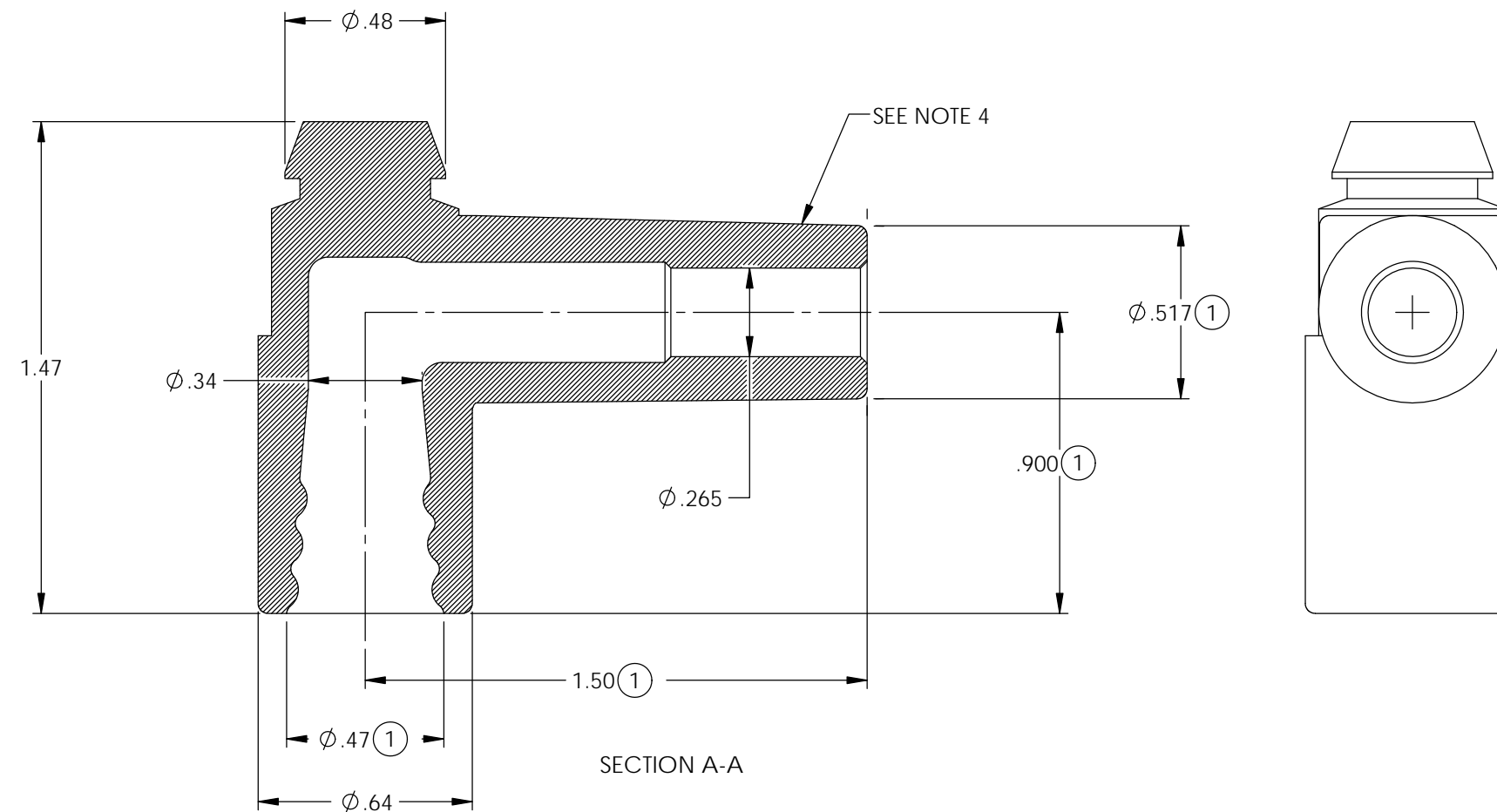
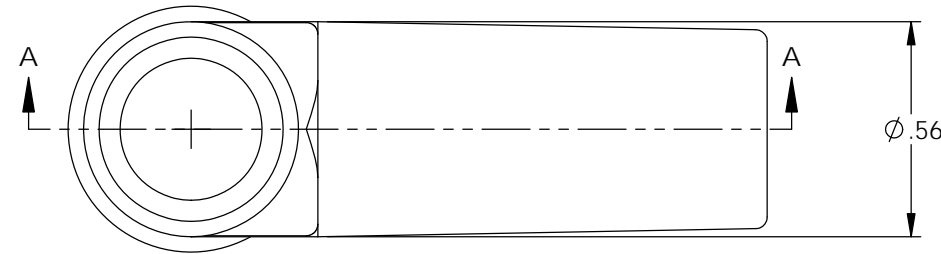


NOTES:

1. MATERIAL: SILICONE (TEMPERATURE: 400 °).
2. MATERIAL: SILICONE (TEMPERATURE: 500 °).
3. MATERIAL: SILICONE (TEMPERATURE: 600 °).
4. DUROMETER TO BE TAKEN IN THIS AREA USING A-2 DUROMETER. SEE FINISHED PARTS: MAT'L/DUROMETER SPEC.
5. FOR MAXIMUM PERFORMANCE AND RELIABILITY, ALWAYS USE ETCO ENGINEERED IGNITOR TERMINALS WITH ETCO AUTOMOTIVE INSULATORS.

P/C	DESCRIPTION	MAT'L	COLOR
16105	AB1-VS/LB-3752	NOTE 1	LIGHT BLUE
16107	AB1-BS	NOTE 1	BLACK
16125	AB1-VS/RB-3752	NOTE 1	ROYAL BLUE
16137	AB1-GS/HT	NOTE 2	GRAY
16148	AB1-GS-600	NOTE 3	GRAY
18101	AB1-OS	NOTE 1	ORANGE

Rev.	Description of Change/ SCN#	Date
1	ECR# 5458 SCJ Redrawn in SW from ACAD Org.Eng.Dwg.Date: 12/7/89	2/20/19



## UNCONTROLLED COPY

<p>THIRD ANGLE PROJECTION TOLERANCES UNLESS OTHERWISE SPECIFIED INCHES: .XX - ±.030 .XXX - ±.015 ANGLES: ±5°</p>	<p>MOLD NO.</p> <p><b>2198</b></p>	<p>Title: GM Hammer Head Boot: 8mm</p>	
		<p>DO NOT SCALE DWG.</p> <p>ETCO Incorporated Engineered Products 25 Bellows Street Warwick, RI 02888 Phone: (401) 467-2400 Fax: (401) 467-9230 www.ETCO.com</p>	<p>Drawn By: S.Johnson</p> <p>Design Control By: ETCO</p> <p>Dwg. No.:</p>

AB1 cust