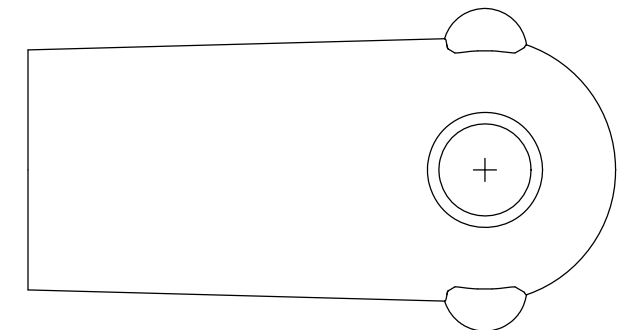
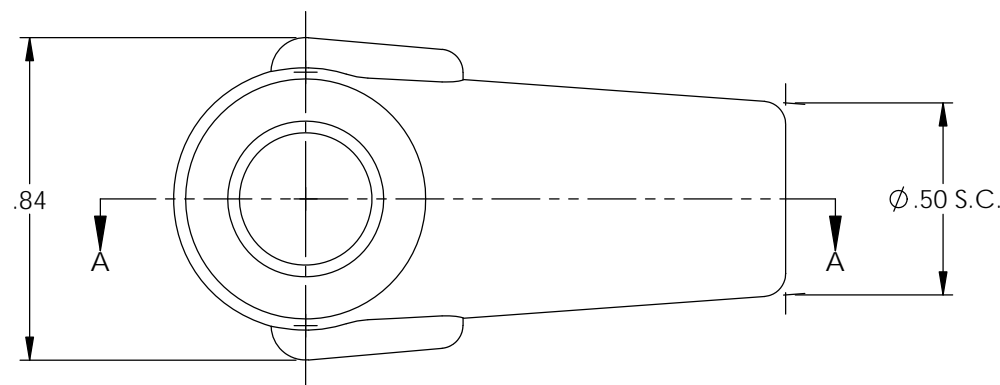
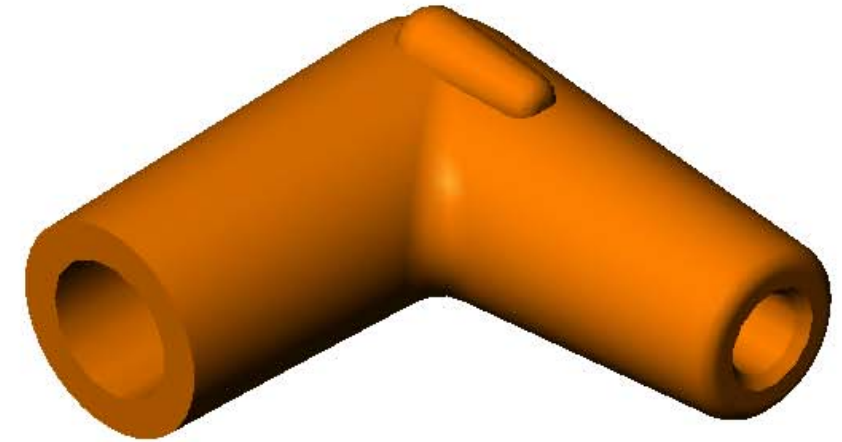
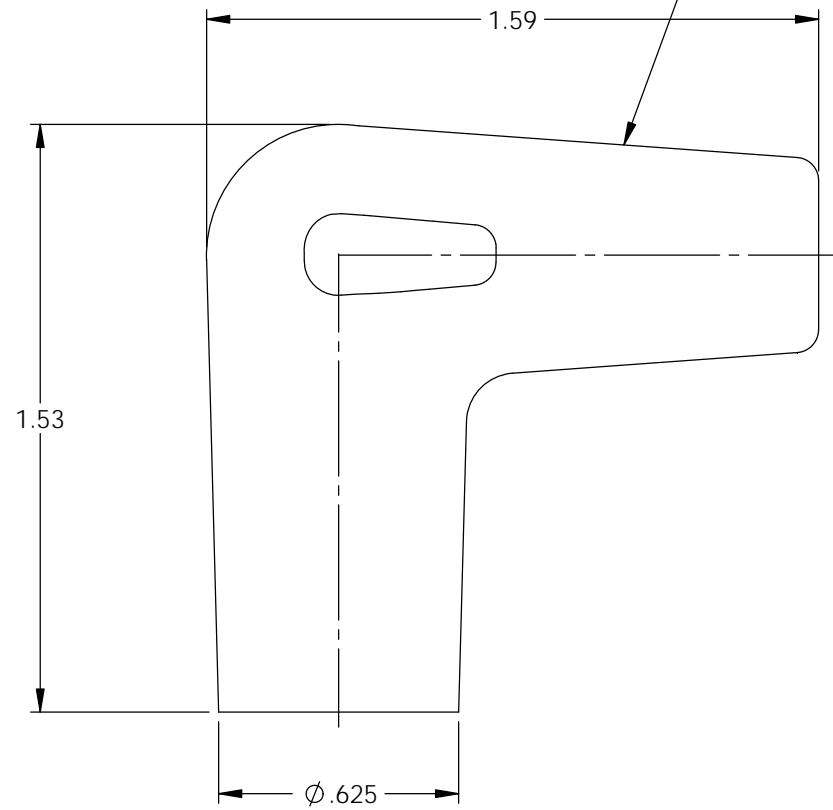
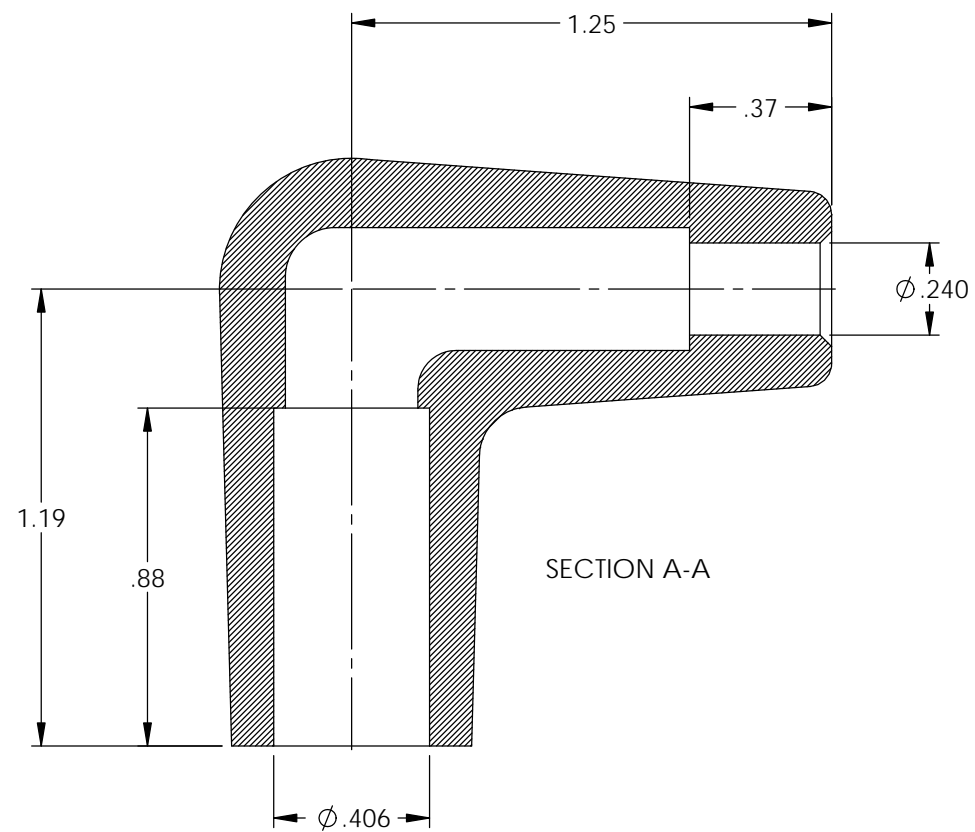


| P/C | DESCRIPTION | COLOR | MATERIAL | TEMPERATURE |
|-------|-------------|--------|----------|-------------|
| 16073 | AB10-OS | ORANGE | SILICONE | 400° |
| 16075 | AB10-BS | BLACK | SILICONE | 400° |

| Rev. | Description of Change/ SCN# | Date |
|------|--|---------|
| 1 | Redrawn in SW from ACAD Org.Eng.Dwg.Date: 2/21/91 | 7/02/19 |

NOTE:
FOR MAXIMUM PERFORMANCE AND RELIABILITY,
ALWAYS USE ETCO ENGINEERED IGNITION TERMINALS
WITH ETCO AUTOMOTIVE INSULATORS.

NOTE: DUROMETER TO BE TAKEN IN THIS AREA
USING SHORE A-2 DUROMETER.
(SEE FINISHED PARTS: MATERIAL/DUROMETER SPEC.)



UNCONTROLLED COPY

| | | | | |
|---|------------------------------------|---------------------------------------|-----------------------------------|-----------------------------|
| <p>THIRD ANGLE PROJECTION TOLERANCES UNLESS OTHERWISE SPECIFIED</p> <p>INCHES: .XX - ±.030 .XXX - ±.015</p> <p>ANGLES: ±2°</p> | <p>MOLD NO.</p> <p>2185</p> | <p>Title: Angle Boot</p> | | |
| | <p>ETCO</p> | <p>DO NOT SCALE DWG.</p> | <p>Drawn By: S.Johnson</p> | <p>Date: 7/02/19</p> |
| <p>ETCO Incorporated Engineered Products 25 Bellows Street Warwick, RI 02888 Phone: (401) 467-2400 Fax: (401) 467-9230 www.ETCO.com</p> | | <p>Design Control By: ETCO</p> | <p>Scale: 2X</p> | <p>Size B</p> |
| | | <p>Dwg. No.: AB10 cust</p> | | |