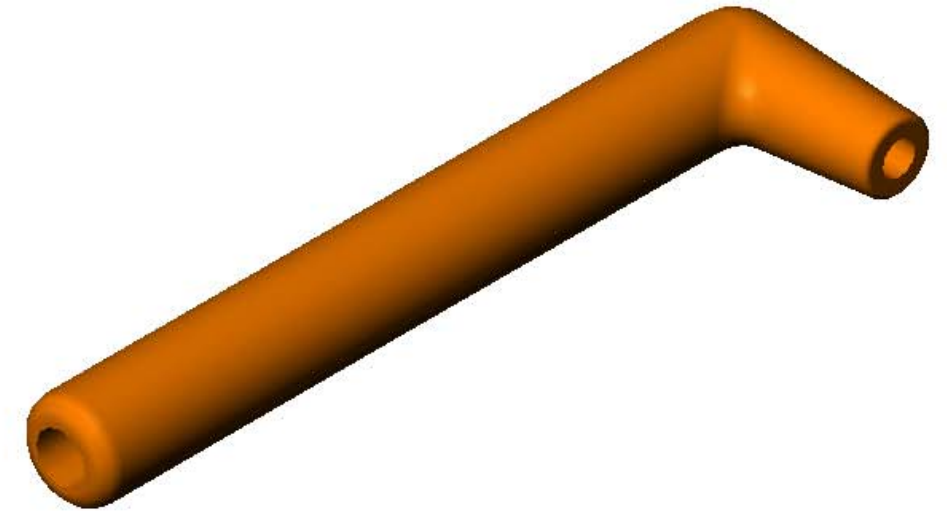
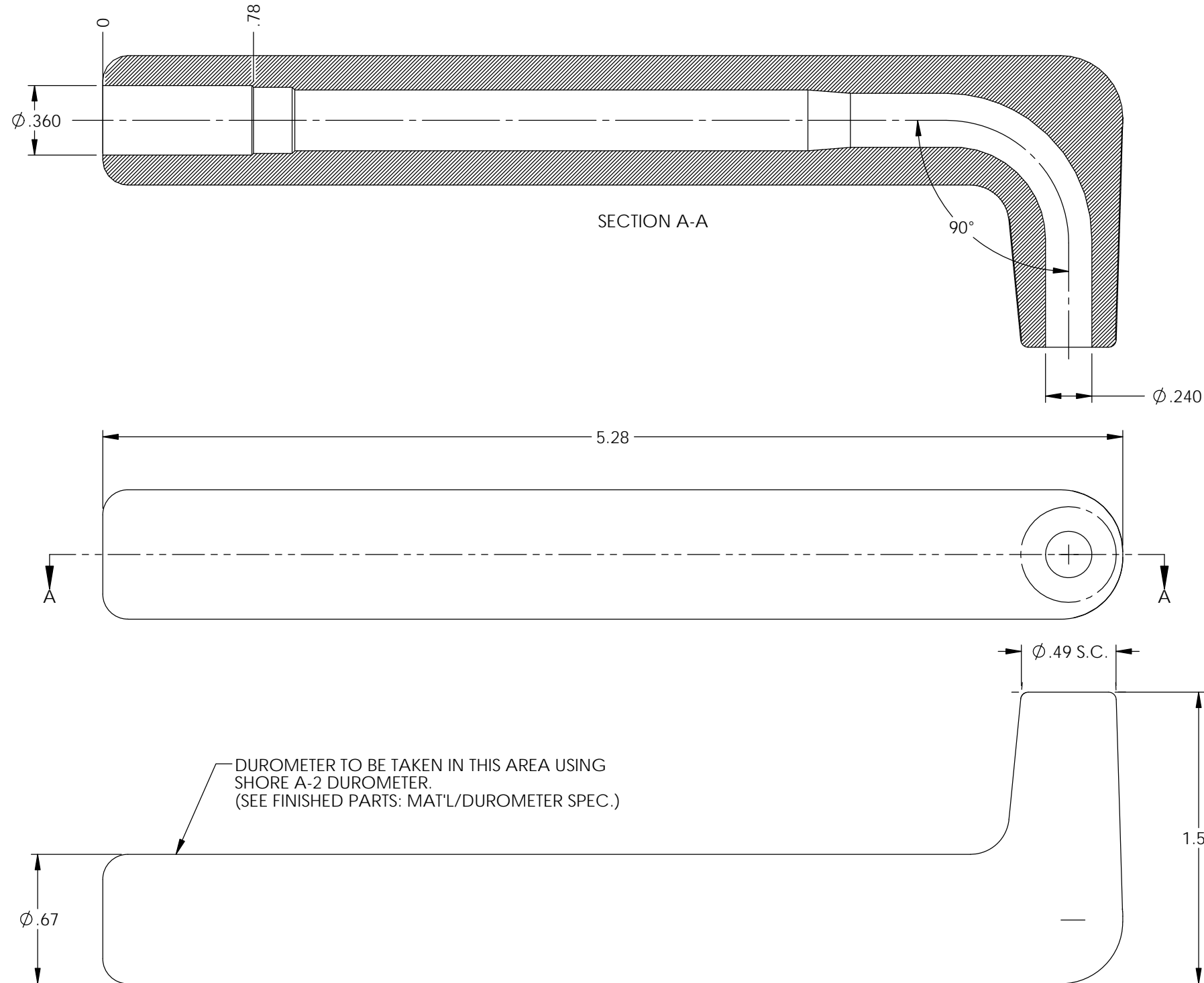


P/C	DESCRIPTION	MAT'L	COLOR	TEMPERATURE
16032	AB14-OS	SILICONE	ORANGE	400°
18013	AB14-BS	SILICONE	BLACK	400°

NOTE: FOR MAXIMUM PERFORMANCE AND RELIABILITY,
ALWAYS USE ETCO ENGINEERED IGNITION TERMINALS
WITH ETCO AUTOMOTIVE INSULATORS.

Rev.	Description of Change/ SCN#	Date
1	Redrawn in SW from ACAD Org.Eng.Dwg.Date: 12/13/89	12/05/19



UNCONTROLLED COPY

<p>THIRD ANGLE PROJECTION TOLERANCES UNLESS OTHERWISE SPECIFIED</p> <p>INCHES: .XX - ±.030 .XXX - ±.015</p> <p>ANGLES: ±2°</p>	<p>MOLD NO.</p> <p>2074</p>	<p>Title: 7mm Spark Plug Angle Boot</p>	
	<p>ETCO</p>	<p>DO NOT SCALE DWG.</p> <p>ETCO Incorporated Engineered Products 25 Bellows Street Warwick, RI 02888 Phone: (401) 467-2400 Fax: (401) 467-9230 www.ETCO.com</p>	<p>Drawn By: S.Johnson</p> <p>Design Control By: ETCO</p> <p>Dwg. No.: AB14 cust</p>