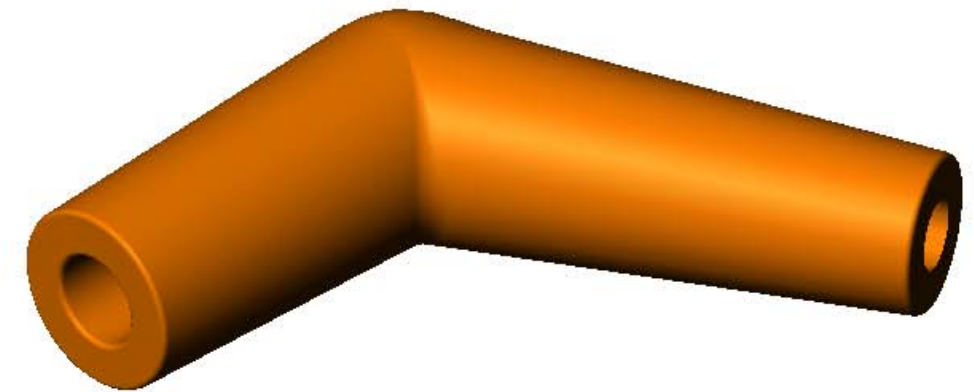
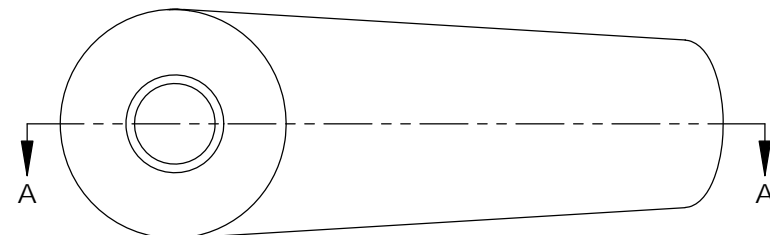
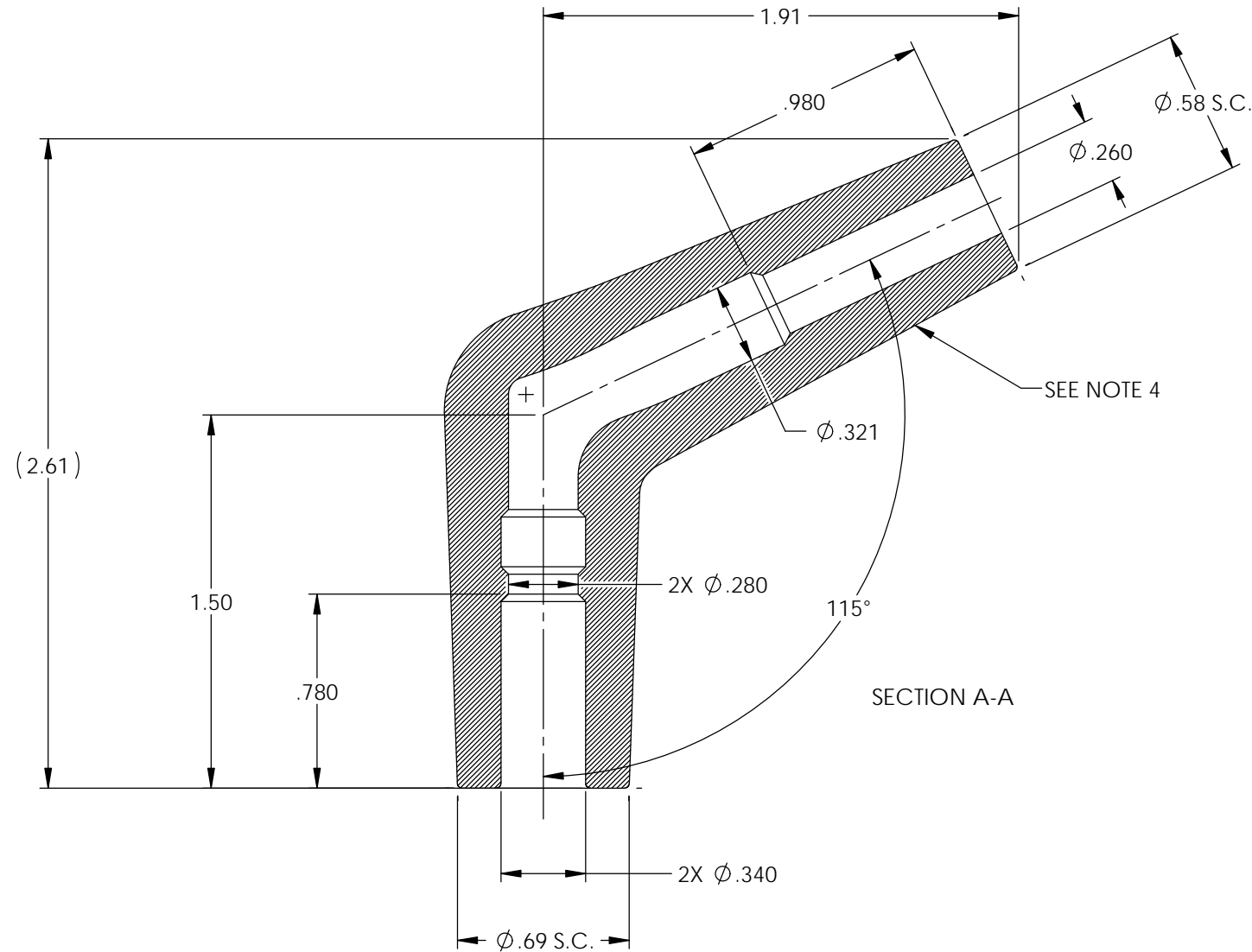


NOTES:

1. MATERIAL: SILICONE (TEMPERATURE: 400°).
2. MATERIAL: SILICONE (TEMPERATURE: 500°).
3. MATERIAL: SILICONE (TEMPERATURE: 600°).
4. DUROMETER TO BE TAKEN IN THIS AREA USING A-2 DUROMETER. SEE FINISHED PARTS: MAT'L/DUROMETER SPEC.
5. FOR MAXIMUM PERFORMANCE AND RELIABILITY, ALWAYS USE ETCO ENGINEERED IGNITOR TERMINALS WITH ETCO AUTOMOTIVE INSULATORS.

| P/C | DESCRIPTION | MAT'L | COLOR |
|-------|-----------------|--------|------------|
| 16036 | AB15-OS | NOTE 1 | ORANGE |
| 16037 | AB15-BS | NOTE 1 | BLACK |
| 16067 | AB15-GS | NOTE 1 | GRAY |
| 16102 | AB15-GS/HT | NOTE 2 | GRAY |
| 16110 | AB15-VS/RB-2752 | NOTE 1 | ROYAL BLUE |
| 16150 | AB15-GS-600 | NOTE 3 | GRAY |

| Rev. | Description of Change/ SCN# | Date |
|------|---|---------|
| 1 | Redrawn in SW from ACAD Org.Eng.Dwg.Date: 12/13/89 | 2/15/19 |



UNCONTROLLED COPY

| | | | | |
|---|--|--------------------------------|----------------------------|----------------------|
| THIRD ANGLE PROJECTION TOLERANCES UNLESS OTHERWISE SPECIFIED INCHES: .XX - ±.030 .XXX - ±.015 ANGLES: ±5° | MOLD NO. 2121 2182 | Title: Angle Boot | | |
| | | DO NOT SCALE DWG. | Drawn By: S.Johnson | Date: 2/15/19 |
| ETCO | ETCO Incorporated Engineered Products 25 Bellows Street Warwick, RI 02888 Phone: (401) 467-2400 Fax: (401) 467-9230 www.ETCO.com | Design Control By: ETCO | Scale: 3:2 | Size B |
| | | Dwg. No.: AB15 cust | | |