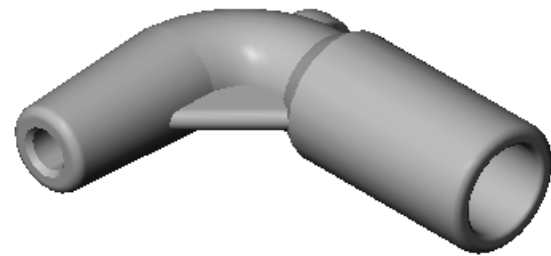
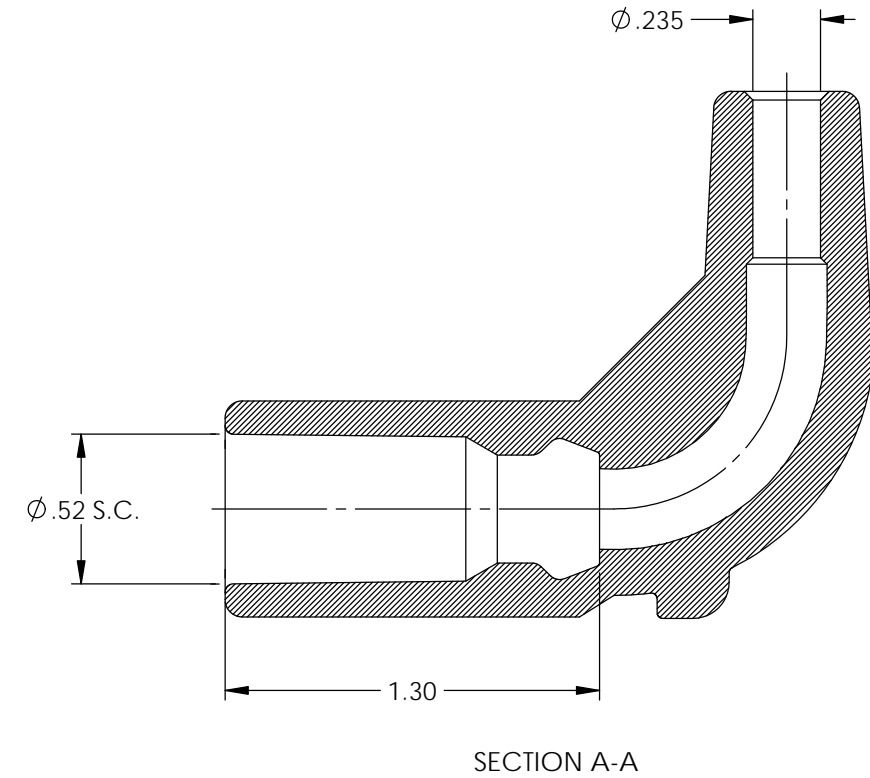
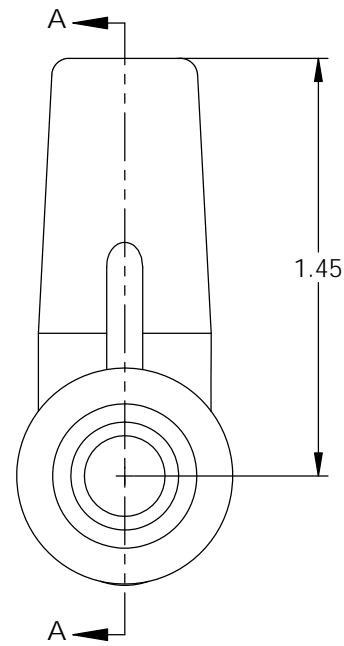
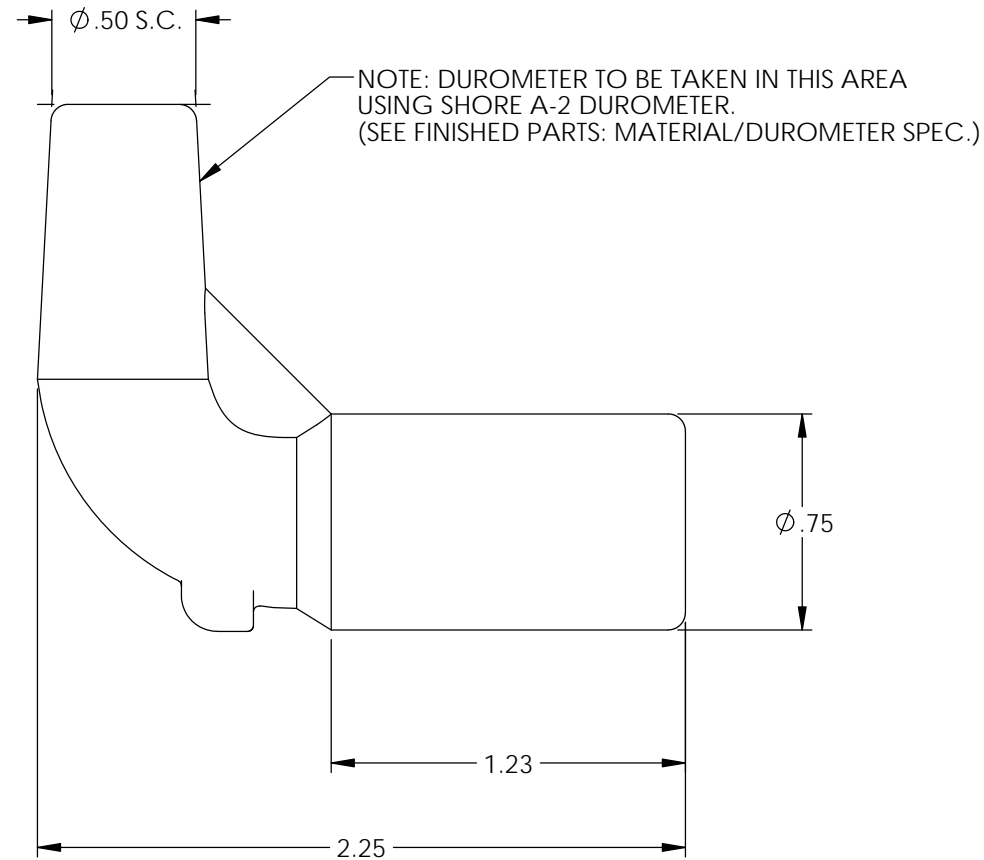


P/C	DESCRIPTION	COLOR	MATERIAL	TEMPERATURE
18099	AB155-BS	BLACK	SILICONE	400°
18100	AB155-GS	GREY	SILICONE	400°

Rev.	Description of Change/ SCN#	Date
1	Redrawn in SW from ACAD Org.Eng.Dwg.Date: 5/15/02	9/12/19

NOTE:
FOR MAXIMUM PERFORMANCE AND RELIABILITY,
ALWAYS USE ETCO ENGINEERED IGNITION TERMINALS
WITH ETCO AUTOMOTIVE INSULATORS.



UNCONTROLLED COPY

<p>THIRD ANGLE PROJECTION TOLERANCES UNLESS OTHERWISE SPECIFIED INCHES: .XX - $\pm .030$.XXX - $\pm .015$ ANGLES: $\pm 2^\circ$</p>	<p>TOOL NO. 2227</p>	<p>Title: 90° ANGLE BOOT</p>		
		<p>DO NOT SCALE DWG.</p>	<p>Drawn By: S.Johnson</p>	<p>Date: 9/12/19</p>
<p>ETCO Incorporated Engineered Products 25 Bellows Street Warwick, RI 02888 Phone: (401) 467-2400 Fax: (401) 467-9230 www.ETCO.com</p>		<p>Design Control By: ETCO</p>	<p>Scale: 3:2</p>	<p>Size B</p>
		<p>Dwg. No.: AB155 cust</p>		