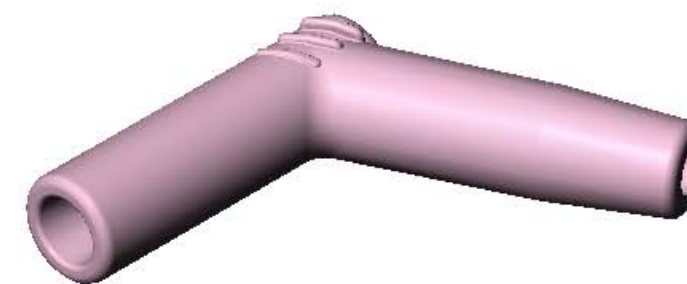
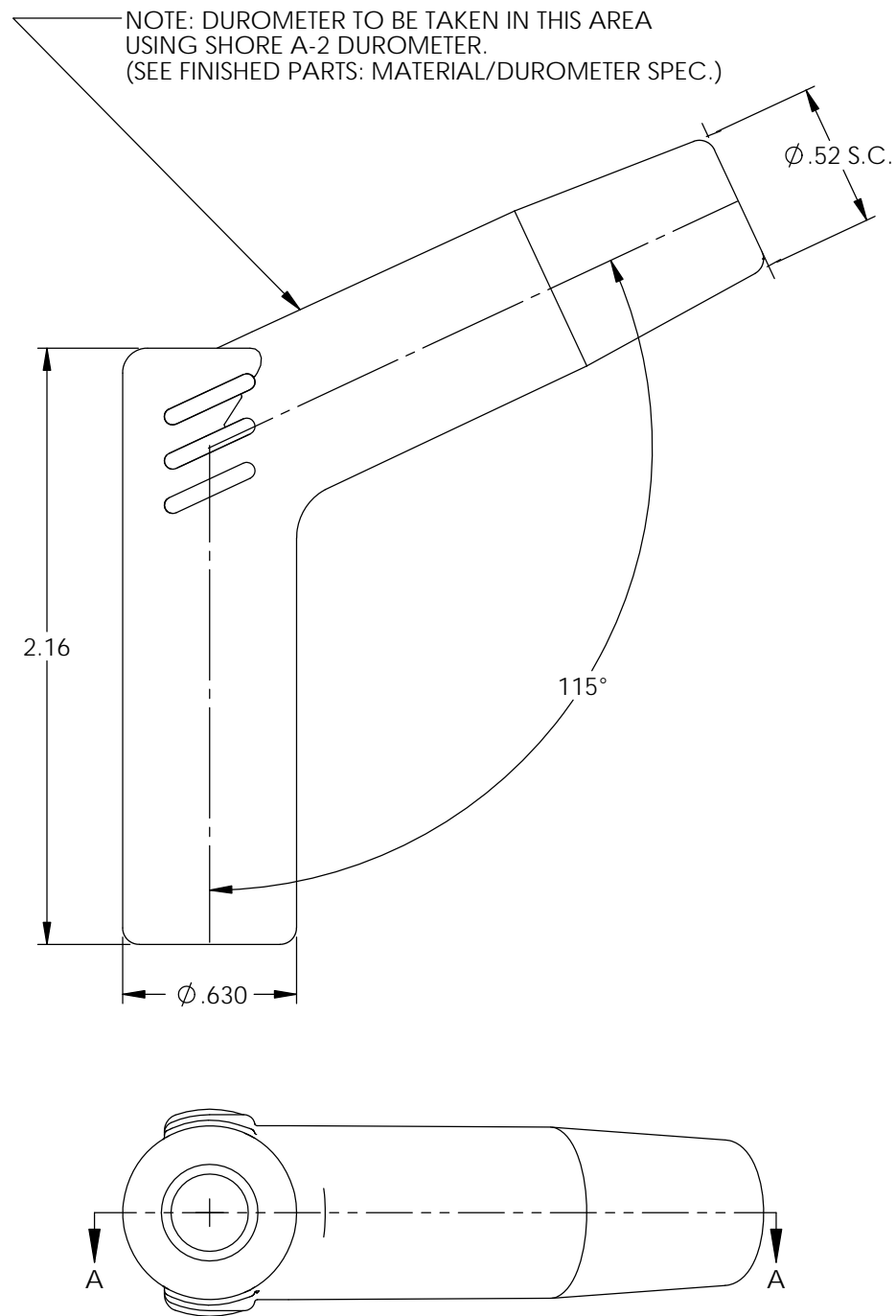
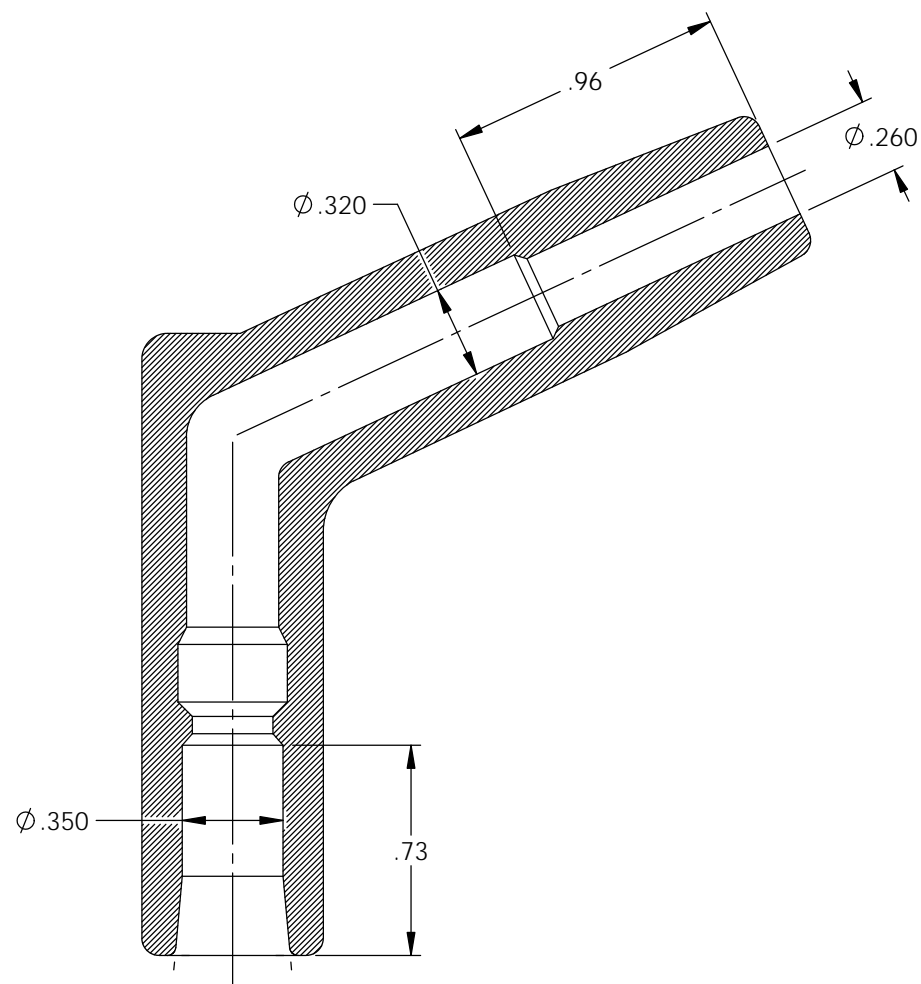


P/C	DESCRIPTION	COLOR	MATERIAL	TEMPERATURE
16163	AB19-PS	PINK	SILICONE	400°
16162	AB19-GS	GREY	SILICONE	400°
16161	AB19-BS	BLACK	SILICONE	400°

NOTE:  
FOR MAXIMUM PERFORMANCE AND RELIABILITY,  
ALWAYS USE ETCO ENGINEERED IGNITION TERMINALS  
WITH ETCO AUTOMOTIVE INSULATORS.

Rev.	Description of Change/ SCN#	Date
1	Redrawn in SW from ACAD Org.Eng.Dwg.Date: 5/04/15	7/16/19



SECTION A-A

# UNCONTROLLED COPY

<p>THIRD ANGLE PROJECTION TOLERANCES UNLESS OTHERWISE SPECIFIED</p> <p>INCHES: .XX - ±.030 .XXX - ±.015</p> <p>ANGLES: ±2°</p>	<p>MOLD NO.</p> <p><b>2250</b></p>	<p>Title: <b>Angle Boot</b></p>		
	<p><b>ETCO</b></p>	<p>DO NOT SCALE DWG.</p> <p>ETCO Incorporated Engineered Products 25 Bellows Street Warwick, RI 02888 Phone: (401) 467-2400 Fax: (401) 467-9230 www.ETCO.com</p>	<p>Design Control By:</p> <p><b>ETCO</b></p>	<p>Scale:</p> <p><b>3:2</b></p>
		<p>Dwg. No.: <b>AB19 cust</b></p>		